

IMPERIAL PRINCESS BEATRICE — PRINCESS YACHTS



Builder: PRINCESS YACHTS

Year Built: 2012

Model: Motor Yacht

Price: €9,800,000 EUR

Location: France

LOA: 131' 3" (40mm)

Beam: 26.9

Cruise Speed: 20 Knots Kts. (23 MPH)

Our experienced yacht broker, Andrey Shestakov, will help you choose and buy a yacht that best suits your needs **IMPERIAL PRINCESS BEATRICE — PRINCESS YACHTS** from **our catalogue**. Presently, at **Shestakov Yacht Sales Inc.**, we have a wide variety of yachts available on **our sale's list**. We also work in close contact with all the big **yacht manufacturers** from all over the world.

If you would like to buy a yacht **IMPERIAL PRINCESS BEATRICE — PRINCESS YACHTS** or would like help answering any questions concerning purchasing, selling or chartering a yacht, please call **+1(954)274-4435**

TABLE OF CONTENTS

TABLE OF CONTENTS	2
SPECIFICATIONS	4
Overview	4
Basic Information	4
Dimensions	4
Speed, Capacities and Weight	4
Accommodations	5
Hull and Deck Information	5
Engine Information	5
PHOTOS	6
3	6
2	6
4	6
5	6
6	6
7	6
8	7
9	7
10	7
11	7
12	7
13	7
14	8
15	8
17	8
16	8
19	8
20	8

21	9
22	9
24	9
23	9
25	9
27	9
28	10
29	10
30	10
CONTACTS	11
Contact details	11
Telephones	11
Office hours	11
Address	11

SPECIFICATIONS

Overview

PRINCESS 40M-2012-CHARTER MACHINE-5 CABINS

Introducing the majestic IMPERIAL PRINCESS BEATRICE, a breathtaking 40.16m (132') Superyacht crafted for unparalleled luxury by Princess Yachts and unveiled in 2012. This exceptional vessel, boasts unparalleled naval architecture and exterior design by Olesinski Ltd., complemented by the interior expertise of Bannenberg & Rowell design.

With a remarkable volume of 395GT, she captivates with her spaciousness both inside and out. Hosting up to 12 guests, she offers 5 opulent staterooms, including a magnificent beam-wide main deck his&hers Master cabin, 2 VIP cabins, and 2 convertible twin cabins, each adorned with foldable Pullman beds for added comfort. Every cabin exudes elegance and is equipped with its own lavish en-suite facilities. Additionally, she provides accommodation for 7 crew members, ensuring impeccable service.

Presenting herself in immaculate condition, IMPERIAL PRINCESS BEATRICE shines with continuous refits and updates, enhancing both her aesthetics and machinery to guarantee an unparalleled experience on the water.

Basic Information

Category: Motor Yacht

Model Year: 2012

Year Built: 2012

Country: France

Dimensions

LOA: 131' 3" (40mm)

Beam: 26.9

Speed, Capacities and Weight

Cruise Speed: 20 Knots Kts. (23 MPH)

Accommodations

Total Cabins: 5

Hull and Deck Information

Hull Material: Fiberglass

Engine Information

Engines: 1

Manufacturer: MTU

Engine Type: Inboard

Fuel Type: Diesel

PHOTOS

2



3



4



5



6



7



8



9



10



11



12



13



14



15



16



17



19



20



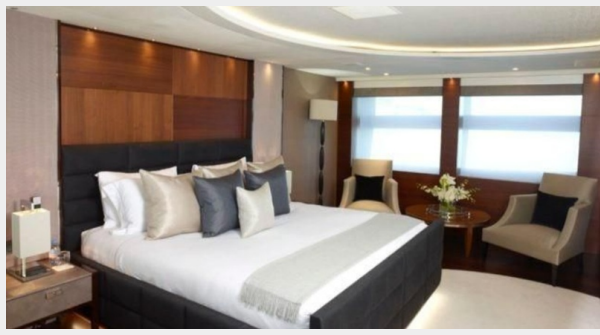
21



22



23



24



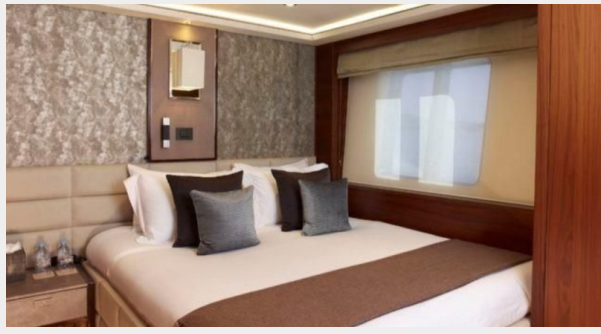
25



27



28



29



30



CONTACTS

Andrey Shestakov, leading yacht broker of the sales department of Shestakov Yacht Sales Inc. Shestakov Yacht Sales Inc., the official representative of the Miami/Fort Lauderdale FL headquarters.

Contact details

Email: **andrey@shestakovyachtsales.com**

Web: shestakovyachtsales.com/en/

Telephones

USA: **+1(954)274-4435**

Office hours

Monday – Saturday: **9:00 - 21:00** EDT

Sunday: **closed**

Address



Harbour Towne Marina, 850 NE 3rd St, STE 213, Dania, FL 33004