

## NO NAME — GRADY-WHITE



**Builder:** GRADY-WHITE

**LOA:** 33' (10.06mm)

**Year Built:** 2003

**Beam:** 11.58

**Model:** runabout

**Price:** \$128,000 USD

**Location:** United States

Our experienced yacht broker, Andrey Shestakov, will help you choose and buy a yacht that best suits your needs **No Name — GRADY-WHITE** from our catalogue. Presently, at **Shestakov Yacht Sales Inc.**, we have a wide variety of yachts available on our sale's list. We also work in close contact with all the big **yacht manufacturers** from all over the world.

If you would like to buy a yacht **No Name — GRADY-WHITE** or would like help answering any questions concerning purchasing, selling or chartering a yacht, please call **+1(954)274-4435**

# TABLE OF CONTENTS

TABLE OF CONTENTS	2
SPECIFICATIONS	5
Overview	5
Basic Information	5
Dimensions	5
Speed, Capacities and Weight	6
Accommodations	6
Hull and Deck Information	6
Engine Information	6
PHOTOS	7
330 EXPRESS GRADY-WHITE 2003 BOW PROFILE	7
330 EXPRESS GRADY-WHITE 2003 HELM SWITCH PANEL	7
330 EXPRESS GRADY-WHITE 2003 GALLEY COUNTERTOP	7
330 EXPRESS GRADY-WHITE 2003 HELM AREA	7
330 EXPRESS GRADY-WHITE 2003 OVERHEAD PROFILE	8
330 EXPRESS GRADY-WHITE 2003 BOW AREA	8
330 EXPRESS GRADY-WHITE 2003 BOW AREA 2	8
330 EXPRESS GRADY-WHITE 2003 RADAR	8
330 EXPRESS GRADY-WHITE 2003 STERN PROFILE	9
330 EXPRESS GRADY-WHITE 2003 STERN	9
330 EXPRESS GRADY-WHITE 2003 ENGINES	9
330 EXPRESS GRADY-WHITE 2003 COCKPIT	9
330 EXPRESS GRADY-WHITE 2003 AFT COCKPIT SEAT	9
330 EXPRESS GRADY-WHITE 2003 COCKPIT 2	9
330 EXPRESS GRADY-WHITE 2003 COCKPIT AREA 3	10
330 EXPRESS GRADY-WHITE 2003 COCKPIT AREA 2	10
330 EXPRESS GRADY-WHITE 2003 COCKPIT AREA	10
330 EXPRESS GRADY-WHITE 2003 COCKPIT FORWARD SEATING	10

---

330 EXPRESS GRADY-WHITE 2003 ENGINE GAUGES	10
330 EXPRESS GRADY-WHITE 2003 HELM CONTROLS	10
330 EXPRESS GRADY-WHITE 2003 HELM DETAIL	11
330 EXPRESS GRADY-WHITE 2003 HELM SEAT 2	11
330 EXPRESS GRADY-WHITE 2003 HELM SEAT DETAIL	11
330 EXPRESS GRADY-WHITE 2003 HELM SEAT	11
330 EXPRESS GRADY-WHITE 2003 HELM	11
330 EXPRESS GRADY-WHITE 2003 NAVIGATION SCREENS	11
330 EXPRESS GRADY-WHITE 2003 PORT HELM SEATING	12
330 EXPRESS GRADY-WHITE 2003 STARBOARD HELM SEATING	12
330 EXPRESS GRADY-WHITE 2003 SEATING	12
330 EXPRESS GRADY-WHITE 2003 VHF	12
330 EXPRESS GRADY-WHITE 2003 SALON	12
330 EXPRESS GRADY-WHITE 2003 ELECTRICAL PANEL	12
330 EXPRESS GRADY-WHITE 2003 GALLEY 3	13
330 EXPRESS GRADY-WHITE 2003 GALLEY	13
330 EXPRESS GRADY-WHITE 2003 GALLEY 2	13
330 EXPRESS GRADY-WHITE 2003 SALON DINING	13
330 EXPRESS GRADY-WHITE 2003 SALON TABLE	13
330 EXPRESS GRADY-WHITE 2003 AFT CABIN	13
330 EXPRESS GRADY-WHITE 2003 AFT CABIN 2	14
330 EXPRESS GRADY-WHITE 2003 AFT CABIN 3	14
330 EXPRESS GRADY-WHITE 2003 BOW BED	14
330 EXPRESS GRADY-WHITE 2003 FORWARD CABIN	14
330 EXPRESS GRADY-WHITE 2003 HEAD	14
CONTACTS	15
Contact details	15
Telephones	15
Office hours	15

---

Address

15

---

---

# SPECIFICATIONS

---

## Overview

---

SELLER DOWNGRADING AND MOTIVATED TO SELL

This 2003 Grady-White 330 Express is a popular offshore fishing boat! It has a deep-V hull design that provides a smooth and stable ride, even in rough conditions. The boat is 33 feet long and has a beam (width) of 11 feet, 7 inches. It can accommodate sleeping overnight as has a cabin with a head (bathroom) and galley (kitchen) for extended trips.

The twin Yamaha 225 horsepower outboard engines provide plenty of power and speed for offshore fishing and cruising. Yamaha is a reputable brand known for their reliable and durable outboard engines. The 225 horsepower engines are also relatively fuel-efficient compared to larger engines, which can help reduce operating costs.

Some other notable features of the Grady-White 330 Express include a large cockpit with ample fishing space, a bait prep station, fish boxes, and a livewell. The boat also has a hardtop with a full enclosure for protection from the elements, and a comfortable helm area with plenty of seating and electronics.

Overall, the Grady-White 330 Express with twin 225 Yamaha engines is a solid choice for those looking for a reliable, high-performance offshore fishing boat with a comfortable cabin for overnight trips.

---

## Basic Information

---

**Category:** runabout

**Sub Category:** Runabout

**Model Year:** 2003

**Year Built:** 2003

**Country:** United States

---

## Dimensions

---

**LOA:** 33' (10.06mm)

**Beam:** 11.58

---

## Speed, Capacities and Weight

---

**Water Capacity:** 50 Gallons

**Fuel Capacity:** 350 Gal Gallons

---

## Accommodations

---

**Total Cabins:** 2

**Total Heads:** 1

---

## Hull and Deck Information

---

**Hull Material:** Fiberglass

**Deck Material:** Fiberglass

**Hull Configuration:** Planing

**Hull Color:** White

---

## Engine Information

---

**Engines:** 2

**Manufacturer:** Yamaha

**Engine Type:** Outboard

# PHOTOS

**330 EXPRESS GRADY-WHITE 2003  
BOW PROFILE**



**330 EXPRESS GRADY-WHITE 2003  
HELM SWITCH PANEL**



**330 EXPRESS GRADY-WHITE 2003  
GALLEY COUNTERTOP**



**330 EXPRESS GRADY-WHITE 2003  
HELM AREA**





### 330 EXPRESS GRADY-WHITE 2003 OVERHEAD PROFILE



### 330 EXPRESS GRADY-WHITE 2003 BOW AREA



### 330 EXPRESS GRADY-WHITE 2003 BOW AREA 2



### 330 EXPRESS GRADY-WHITE 2003 RADAR





**330 EXPRESS GRADY-WHITE 2003  
STERN PROFILE**



**330 EXPRESS GRADY-WHITE 2003  
STERN**



**330 EXPRESS GRADY-WHITE 2003  
ENGINES**



**330 EXPRESS GRADY-WHITE 2003  
COCKPIT**



**330 EXPRESS GRADY-WHITE 2003  
AFT COCKPIT SEAT**



**330 EXPRESS GRADY-WHITE 2003  
COCKPIT 2**



**330 EXPRESS GRADY-WHITE 2003  
COCKPIT AREA 3**



**330 EXPRESS GRADY-WHITE 2003  
COCKPIT AREA 2**



**330 EXPRESS GRADY-WHITE 2003  
COCKPIT AREA**



**330 EXPRESS GRADY-WHITE 2003  
COCKPIT FORWARD SEATING**



**330 EXPRESS GRADY-WHITE 2003  
ENGINE GAUGES**



**330 EXPRESS GRADY-WHITE 2003  
HELM CONTROLS**





**330 EXPRESS GRADY-WHITE 2003  
HELM DETAIL**



**330 EXPRESS GRADY-WHITE 2003  
HELM SEAT 2**



**330 EXPRESS GRADY-WHITE 2003  
HELM SEAT DETAIL**



**330 EXPRESS GRADY-WHITE 2003  
HELM SEAT**



**330 EXPRESS GRADY-WHITE 2003  
HELM**



**330 EXPRESS GRADY-WHITE 2003  
NAVIGATION SCREENS**



**330 EXPRESS GRADY-WHITE 2003  
PORT HELM SEATING**



**330 EXPRESS GRADY-WHITE 2003  
STARBOARD HELM SEATING**



**330 EXPRESS GRADY-WHITE 2003  
SEATING**



**330 EXPRESS GRADY-WHITE 2003  
VHF**



**330 EXPRESS GRADY-WHITE 2003  
SALON**



**330 EXPRESS GRADY-WHITE 2003  
ELECTRICAL PANEL**





**330 EXPRESS GRADY-WHITE 2003  
GALLEY 3**



**330 EXPRESS GRADY-WHITE 2003  
GALLEY**



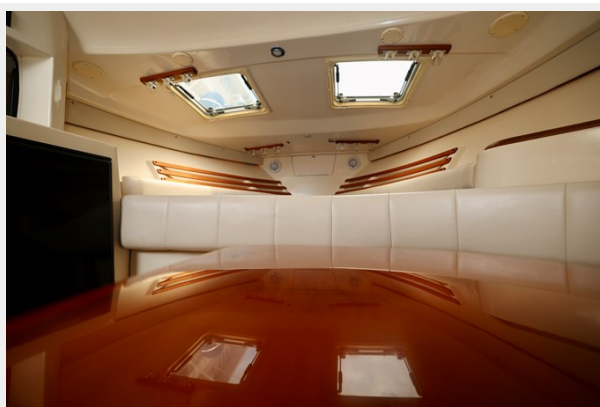
**330 EXPRESS GRADY-WHITE 2003  
GALLEY 2**



**330 EXPRESS GRADY-WHITE 2003  
SALON DINING**



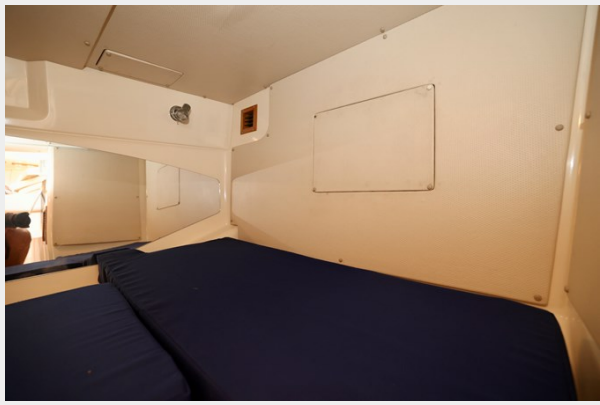
**330 EXPRESS GRADY-WHITE 2003  
SALON TABLE**



**330 EXPRESS GRADY-WHITE 2003  
AFT CABIN**



**330 EXPRESS GRADY-WHITE 2003  
AFT CABIN 2**



**330 EXPRESS GRADY-WHITE 2003  
AFT CABIN 3**



**330 EXPRESS GRADY-WHITE 2003  
BOW BED**



**330 EXPRESS GRADY-WHITE 2003  
FORWARD CABIN**



**330 EXPRESS GRADY-WHITE 2003 HEAD**





# CONTACTS

---

Andrey Shestakov, leading yacht broker of the sales department of Shestakov Yacht Sales Inc. Shestakov Yacht Sales Inc., the official representative of the Miami/Fort Lauderdale FL headquarters.

## Contact details

---

Email: **andrey@shestakovyachtsales.com**

Web: [shestakovyachtsales.com/en/](https://shestakovyachtsales.com/en/)

## Telephones

---

USA: **+1(954)274-4435**

## Office hours

---

Monday – Saturday: **9:00 - 21:00** EDT

Sunday: **closed**

## Address

---



Harbour Towne Marina, 850 NE 3rd St, STE 213, Dania, FL 33004