

# MOSAIQUE — PROTEKSAN-TURQUOISE



**Builder:** PROTEKSAN-TURQUOISE

**Year Built:** 2002

**Model:** Displacement

**Price:** \$13,900,000 USD

**Location:** Italy

**LOA:** 163' 9" (49.91mm)

**Beam:** 30.58

**Max Draft:** 9' 9" (2.95mm)

**Cruise Speed:** 12 Knots Kts. (14 MPH)

**Max Speed:** 15 Knots Kts. (17 MPH)

Our experienced yacht broker, Andrey Shestakov, will help you choose and buy a yacht that best suits your needs **MOSAIQUE — PROTEKSAN-TURQUOISE** from **our catalogue**. Presently, at **Shestakov Yacht Sales Inc.**, we have a wide variety of yachts available on **our sale's list**. We also work in close contact with all the big **yacht manufacturers** from all over the world.

If you would like to buy a yacht **MOSAIQUE — PROTEKSAN-TURQUOISE** or would like help answering any questions concerning purchasing, selling or chartering a yacht, please call **+1(954)274-4435**

---

# TABLE OF CONTENTS

---

TABLE OF CONTENTS	2
SPECIFICATIONS	3
Overview	3
Basic Information	3
Dimensions	3
Speed, Capacities and Weight	4
Accommodations	4
Hull and Deck Information	4
Engine Information	4
PHOTOS	5
CONTACTS	11
Contact details	11
Telephones	11
Office hours	11
Address	11

# SPECIFICATIONS

---

## Overview

---

Designed by Ed Dubois, MOSAIQUE is one of the extremely successful 50m (164') series from this respected shipyard. She has an exceptional six-stateroom layout with great interior spaces and excellent outside deck spaces. She has been constantly upgraded and completed her 20 year class surveys in 2022, when she also had all her Caterpillar machinery rebuilt. Her interior has been completely redecorated and is now in a delightful modern light and airy "Hamptons Beach" house style. She has proven herself in long range cruising and has a 4,500 nm range at 14 knots.

### KEY FEATURES:

- "Blue Marlin" exterior paint
- Full beam master stateroom
- Spacious VIP on main deck
- Proven Charter Reputation
- Light, bright, airy, Hamptons Style Interior
- Oversized windows
- A major refit in 2022/2023 including a major overhaul of the main engines and generators, covered by Caterpillar Platinum Extended Service
- 4,500 nm range
- 20-year class survey completed 2022

## Basic Information

---

**Category:** Displacement

**Sub Category:** Displacement

**Model Year:** 2002

**Year Built:** 2002

**Country:** Italy

## Dimensions

---

**LOA:** 163' 9" (49.91mm)

**Beam:** 30.58

**Max Draft:** 9' 9" (2.95mm)

---

## Speed, Capacities and Weight

---

**Cruise Speed:** 12 Knots Kts. (14 MPH) **Cruise Speed Range:** 4500

**Max Speed:** 15 Knots Kts. (17 MPH) **Gross Tonnage:** 589 Pounds

**Water Capacity:** 6119 Gallons **Holding Tank:** 598 Gal Gallons

**Fuel Capacity:** 22375 Gal Gallons

---

## Accommodations

---

**Total Cabins:** 6

**Sleeps:** 12

**Crew Cabin:** 12

---

## Hull and Deck Information

---

**Hull Material:** Steel

**Deck Material:** Teak

**Hull Configuration:** Full Displacement

**Hull Designer:** Dubois (UK)

**Exterior Designer:** Dubois (UK)

**Interior Designer:** Donald Starkey  
Designs (UK) / Kristina Ferrand (US)

---

## Engine Information

---

**Engines:** 2

**Manufacturer:** Caterpillar

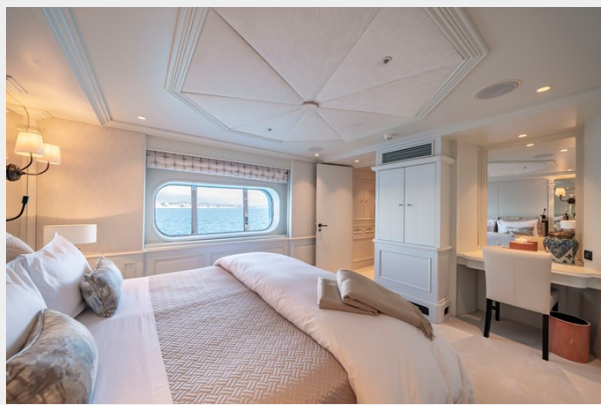
**Engine Type:** Inboard

**Fuel Type:** Diesel

# PHOTOS





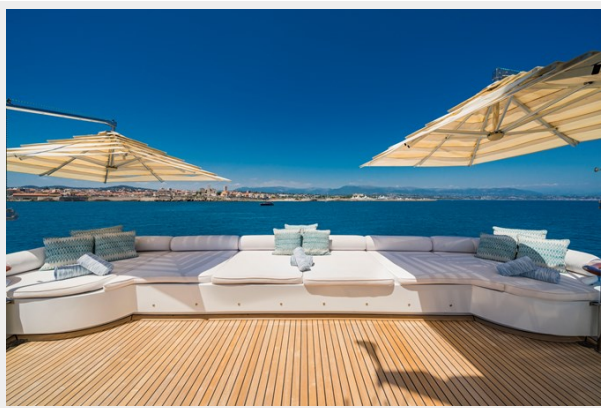


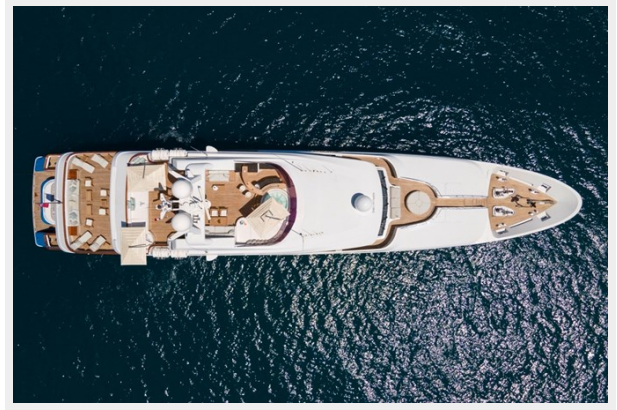












# CONTACTS

---

Andrey Shestakov, leading yacht broker of the sales department of Shestakov Yacht Sales Inc. Shestakov Yacht Sales Inc., the official representative of the Miami/Fort Lauderdale FL headquarters.

## Contact details

---

Email: **andrey@shestakovyachtsales.com**

Web: [shestakovyachtsales.com/en/](https://shestakovyachtsales.com/en/)

## Telephones

---

USA: **+1(954)274-4435**

## Office hours

---

Monday – Saturday: **9:00 - 21:00** EDT

Sunday: **closed**

## Address

---



Harbour Towne Marina, 850 NE 3rd St, STE 213, Dania, FL 33004