

JOYME — PHILIP ZEPTER YACHTS



Builder: [PHILIP ZEPTER YACHTS](#)

Year Built: 2011

Model: Motor Yacht

Price: €11,700,000 EUR

Location: Monaco

LOA: 163' 9" (49.9mm)

Beam: 29.88

Min Draft: 8' 5" (2.55mm)

Cruise Speed: 12 Knots Kts. (14 MPH)

Max Speed: 15 Knots Kts. (17 MPH)

Our experienced yacht broker, Andrey Shestakov, will help you choose and buy a yacht that best suits your needs **Joyme — PHILIP ZEPTER YACHTS** from **our catalogue**. Presently, at **Shestakov Yacht Sales Inc.**, we have a wide variety of yachts available on **our sale's list**. We also work in close contact with all the big **yacht manufacturers** from all over the world.

If you would like to buy a yacht **Joyme — PHILIP ZEPTER YACHTS** or would like help answering any questions concerning purchasing, selling or chartering a yacht, please call **+1(954)274-4435**

TABLE OF CONTENTS

TABLE OF CONTENTS	2
SPECIFICATIONS	3
Overview	3
Basic Information	3
Dimensions	3
Speed, Capacities and Weight	4
Accommodations	4
Hull and Deck Information	4
Engine Information	4
PHOTOS	5
CONTACTS	10
Contact details	10
Telephones	10
Office hours	10
Address	10

SPECIFICATIONS

Overview

Built in steel and aluminum JoyMe was delivered in 2011 and most recently refitted in 2024. Designed by Philip Zepter, JoyMe boasts extraordinary exterior livery and dramatic pop art interiors by Marjana Radovic.

Accommodating 12 guests in a master suite, VIP suite, and four double cabins, all with entertainment systems, WiFi, and en suite bathrooms, she offers luxury and comfort. The master and VIP suites on the upper deck feature a private terrace and saloon with open sea views.

The lower deck features a spa area with sea views, a gymnasium, Finnish sauna, and hammam, while the massive aft deck offers 47 square meters for al fresco dining and entertainment. The sun deck includes a large Jacuzzi and a sky lounge with full entertainment systems.

Twin Cummins KTA-38-MI 1,100hp engines provide a cruising speed of 12.5 knots and a range of 3,000 nautical miles at 12 knots.

Basic Information

Category: Motor Yacht

Model Year: 2011

Year Built: 2011

Country: Monaco

Dimensions

LOA: 163' 9" (49.9mm)

Beam: 29.88

Min Draft: 8' 5" (2.55mm)

Speed, Capacities and Weight

Cruise Speed: 12 Knots Kts. (14 MPH) **Cruise Speed Range:** 3000

Max Speed: 15 Knots Kts. (17 MPH) **Gross Tonnage:** 620 Pounds

Water Capacity: 48000 Gallons **Fuel Capacity:** 15850.32 Gal Gallons

Accommodations

Total Cabins: 6

Sleeps: 12

Hull and Deck Information

Hull Material: Steel

Exterior Designer: Philip Zepter

Interior Designer: Philip Zepter

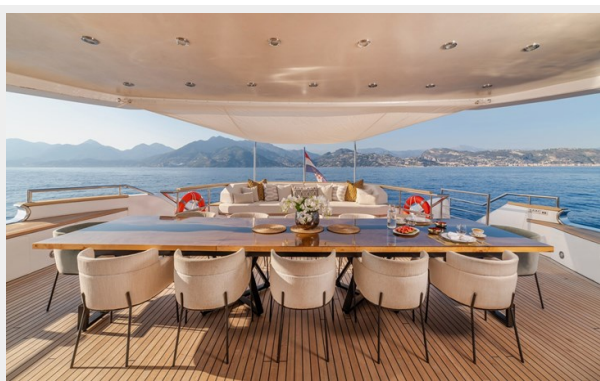
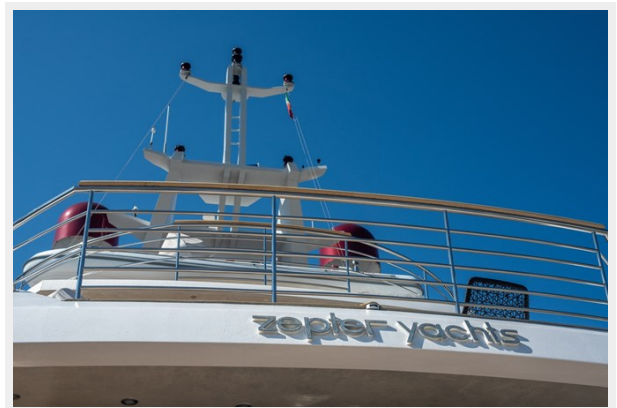
Engine Information

Engines: 2

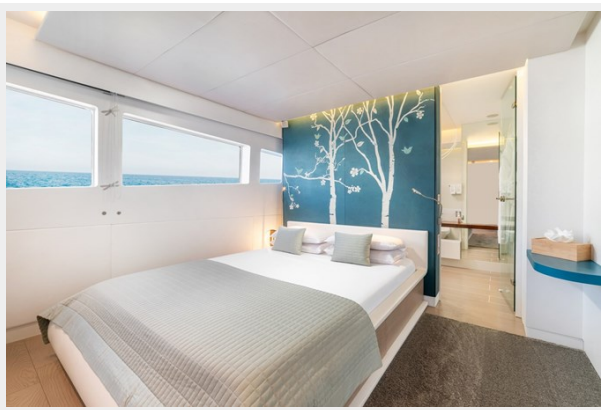
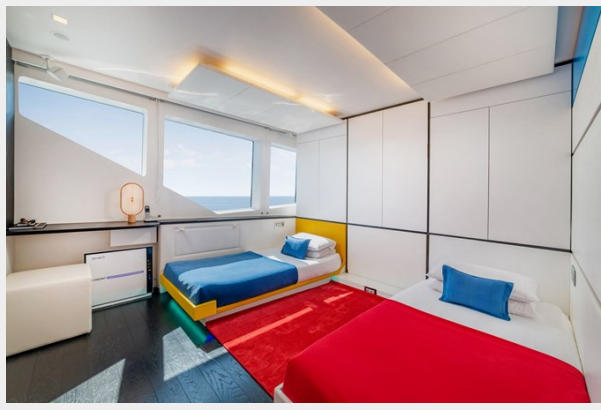
Manufacturer: Cummins

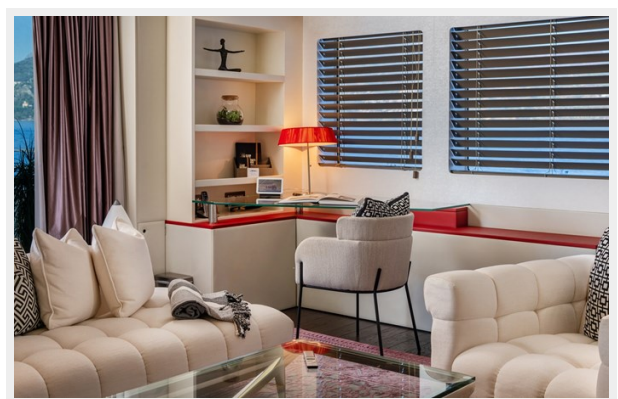
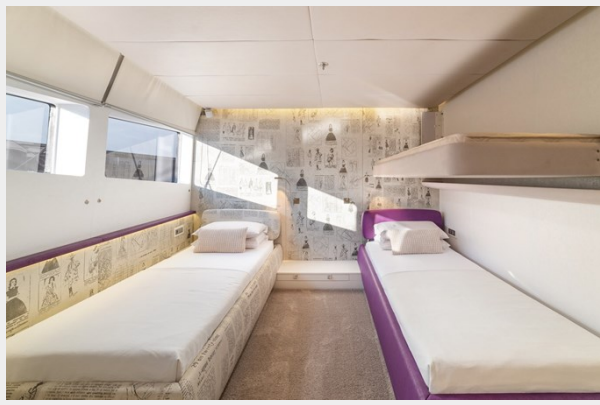
Fuel Type: Diesel

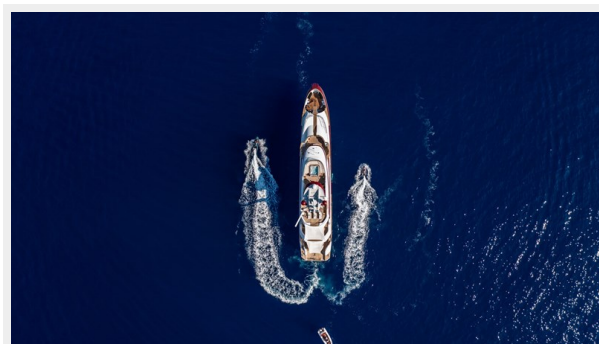
PHOTOS











CONTACTS

Andrey Shestakov, leading yacht broker of the sales department of Shestakov Yacht Sales Inc. Shestakov Yacht Sales Inc., the official representative of the Miami/Fort Lauderdale FL headquarters.

Contact details

Email: **andrey@shestakovyachtsales.com**

Web: shestakovyachtsales.com/en/

Telephones

USA: **+1(954)274-4435**

Office hours

Monday – Saturday: **9:00 - 21:00** EDT

Sunday: **closed**

Address



Harbour Towne Marina, 850 NE 3rd St, STE 213, Dania, FL 33004