

MINE — RIVA



Builder: RIVA

Year Built: 2015

Model: Motor Yacht

Price: €3,990,000 EUR

Location: Spain

LOA: 88' (26.82mm)

Beam: 20.66

Max Draft: 6' 10" (2.08mm)

Cruise Speed: 35 Knots Kts. (40 MPH)

Max Speed: 40 Knots Kts. (46 MPH)

Our experienced yacht broker, Andrey Shestakov, will help you choose and buy a yacht that best suits your needs **MINE — RIVA** from **our catalogue**. Presently, at **Shestakov Yacht Sales Inc.**, we have a wide variety of yachts available on **our sale's list**. We also work in close contact with all the big **yacht manufacturers** from all over the world.

If you would like to buy a yacht **MINE — RIVA** or would like help answering any questions concerning purchasing, selling or chartering a yacht, please call **+1(954)274-4435**

TABLE OF CONTENTS

TABLE OF CONTENTS	2
SPECIFICATIONS	3
Overview	3
Basic Information	3
Dimensions	3
Speed, Capacities and Weight	3
Accommodations	4
Hull and Deck Information	4
Engine Information	4
PHOTOS	5
CONTACTS	16
Contact details	16
Telephones	16
Office hours	16
Address	16

SPECIFICATIONS

Overview

Riva is commonly referred to as the most prestigious name in production yachting. With a history of luxury almost 200 years old, there are few companies that can rival its iconic allure. The 88' FLORIDA model stands out even amongst other Rivas, as their largest and most innovative open model. A revolutionary convertible hardtop provides flexible use of the vast al fresco spaces, while the immense volume down below allows for luxurious cabin accommodations for up to 8 guests.

"MINE" is the best condition, most beautifully maintained Riva Florida in the world. EU VAT paid, and expertly managed by Arrow Monaco from delivery, this yacht is being offered for sale for the first time, in pristine condition and featuring a very long list of over 1.2M euros of factory options, and highly desirable after-market upgrades including a full repaint in 2023.

Basic Information

Category: Motor Yacht

Sub Category: Motor Yacht

Model Year: 2015

Year Built: 2015

Country: Spain

Dimensions

LOA: 88' (26.82mm)

Beam: 20.66

Max Draft: 6' 10" (2.08mm)

Speed, Capacities and Weight

Cruise Speed: 35 Knots Kts. (40 MPH) **Max Speed:** 40 Knots Kts. (46 MPH)

Water Capacity: 261 Gallons

Fuel Capacity: 1980 Gal Gallons

Accommodations

Total Cabins: 4

Sleeps: 8

Total Heads: 4

Crew Cabin: 3

Crew Berths: 2

Crew Heads: 1

Hull and Deck Information

Hull Material: Fiberglass

Engine Information

Engines: 2

Manufacturer: MTU

Engine Type: Inboard

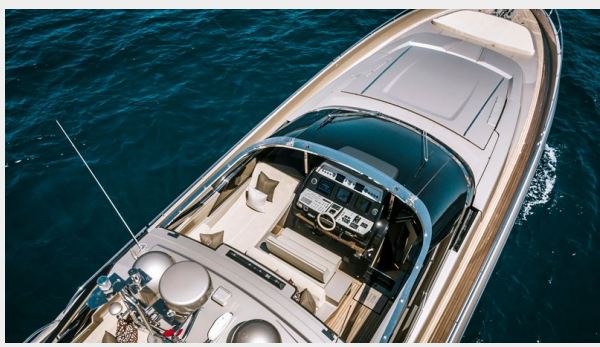
Fuel Type: Diesel

PHOTOS

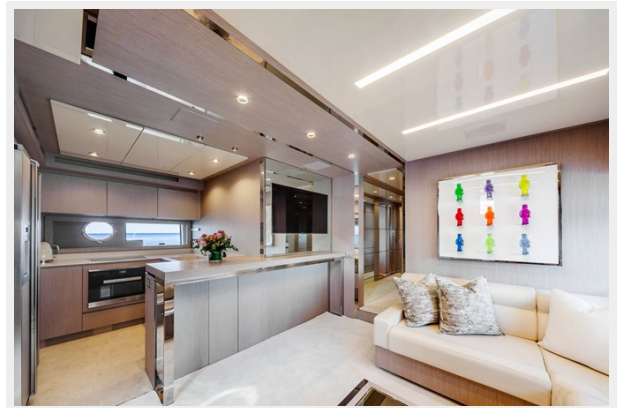


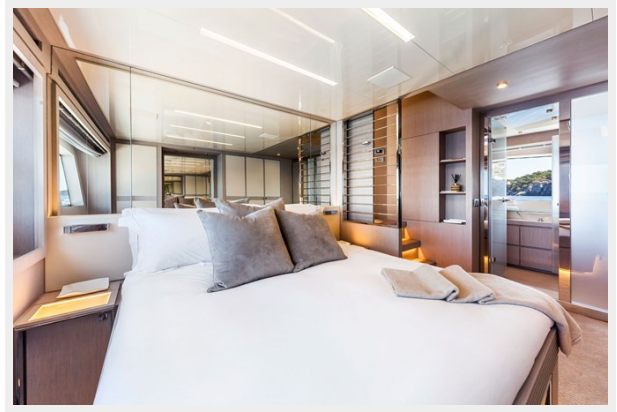




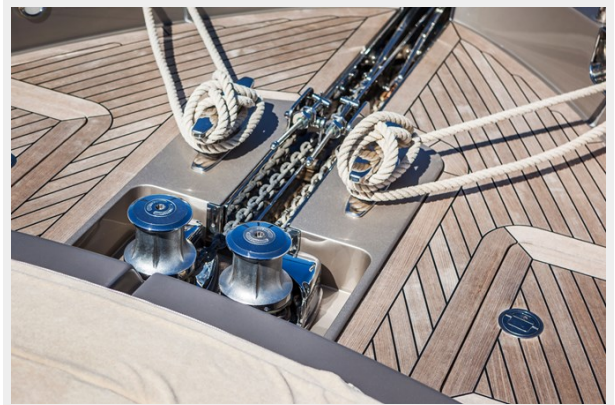




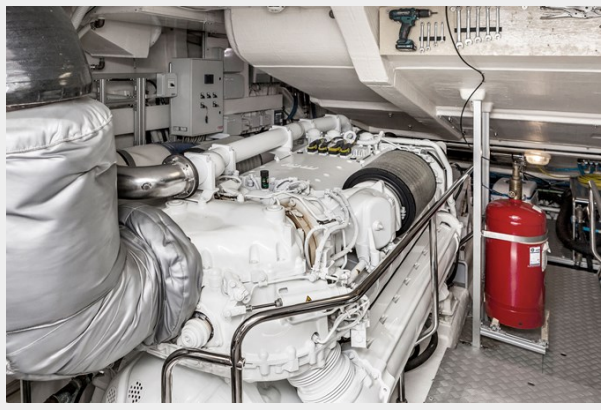












CONTACTS

Andrey Shestakov, leading yacht broker of the sales department of Shestakov Yacht Sales Inc. Shestakov Yacht Sales Inc., the official representative of the Miami/Fort Lauderdale FL headquarters.

Contact details

Email: **andrey@shestakovyachtsales.com**

Web: shestakovyachtsales.com/en/

Telephones

USA: **+1(954)274-4435**

Office hours

Monday – Saturday: **9:00 - 21:00** EDT

Sunday: **closed**

Address



Harbour Towne Marina, 850 NE 3rd St, STE 213, Dania, FL 33004