

SOLAFIDE — BENETTI



Builder: BENETTI

Year Built: 1995

Model: Displacement

Price: €19,500,000 EUR

Location: Monaco

LOA: 169' (51.5mm)

Beam: 29.19

Min Draft: 9' 11" (3mm)

Max Draft: 9' 11" (3mm)

Cruise Speed: 14 Knots Kts. (16 MPH)

Max Speed: 21 Knots Kts. (24 MPH)

Our experienced yacht broker, Andrey Shestakov, will help you choose and buy a yacht that best suits your needs **SOLAFIDE — BENETTI** from **our catalogue**. Presently, at **Shestakov Yacht Sales Inc.**, we have a wide variety of yachts available on **our sale's list**. We also work in close contact with all the big **yacht manufacturers** from all over the world.

If you would like to buy a yacht **SOLAFIDE — BENETTI** or would like help answering any questions concerning purchasing, selling or chartering a yacht, please call **+1(954)274-4435**

TABLE OF CONTENTS

TABLE OF CONTENTS	2
SPECIFICATIONS	4
Basic Information	4
Dimensions	4
Speed, Capacities and Weight	4
Accommodations	4
Hull and Deck Information	5
Engine Information	5
PHOTOS	6
Master full beam with office	6
Master bathroom with sauna	6
Lower double	6
lower guest bathroom	6
profile	6
Main deck dining balcony	6
profile	7
Main deck balcony lounge	7
bridge deck aft	7
bridge deck dining	7
lower deck double	7
guest bathroom	7
solafide yacht sun deck / helipad	8
solafide yacht vip bridge deck	8
Main deck dining	8
Salon main deck	8
Bridge deck salon	8
CONTACTS	9
Contact details	9

Telephones	9
Office hours	9
Address	9

SPECIFICATIONS

Basic Information

Category: Displacement

Sub Category: Displacement

Model Year: 1995

Year Built: 1995

Refit Type: Interior & Exterior

Country: Monaco

Dimensions

LOA: 169' (51.5mm)

LWL: 139' 2" (42.4mm)

Beam: 29.19

Min Draft: 9' 11" (3mm)

Max Draft: 9' 11" (3mm)

Speed, Capacities and Weight

Cruise Speed: 14 Knots Kts. (16 MPH) **Cruise Speed Range:** 4000

Max Speed: 21 Knots Kts. (24 MPH) **Gross Tonnage:** 474 Pounds

Water Capacity: 12400 Gallons **Holding Tank:** 924.6 Gal Gallons

Fuel Capacity: 16907.01 Gal Gallons **Fuel Consumption:** 92.46 Gal Gallons

Accommodations

Total Cabins: 8

Total Berths: 6

Sleeps: 12

Total Heads: 7

Crew Berths: 11

Hull and Deck Information

Hull Material: Steel

Deck Material: Teak

Hull Configuration: Full Displacement

Hull Color: white

Hull Designer: Stefano Natucci

Exterior Designer: Yachtique

Interior Designer: Supernova design studio

Engine Information

Engines: 2

Manufacturer: Deutz

Engine Type: Inboard

Fuel Type: Diesel

PHOTOS

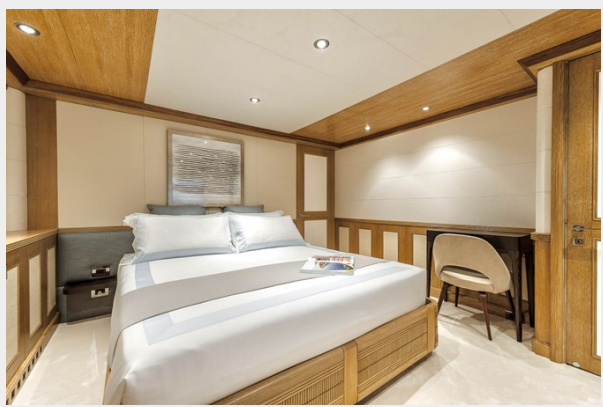
Master full beam with office



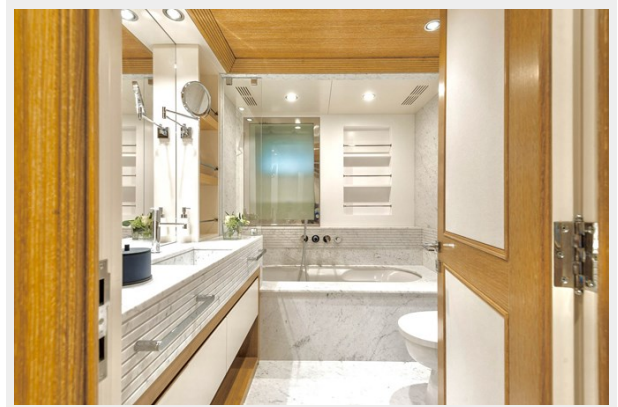
Master bathroom with sauna



Lower double



lower guest bathroom



Main deck dining balcony



profile



profile



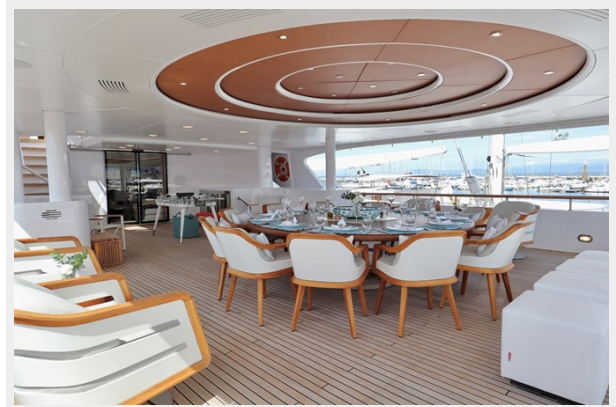
Main deck balcony lounge



bridge deck aft



bridge deck dining



lower deck double



guest bathroom



solafide yacht vip bridge deck



solafide yacht sun deck / helipad



Main deck dining



Salon main deck



Bridge deck salon



CONTACTS

Andrey Shestakov, leading yacht broker of the sales department of Shestakov Yacht Sales Inc. Shestakov Yacht Sales Inc., the official representative of the Miami/Fort Lauderdale FL headquarters.

Contact details

Email: **andrey@shestakovyachtsales.com**

Web: shestakovyachtsales.com/en/

Telephones

USA: **+1(954)274-4435**

Office hours

Monday – Saturday: **9:00 - 21:00** EDT

Sunday: **closed**

Address



Harbour Towne Marina, 850 NE 3rd St, STE 213, Dania, FL 33004