

## PILOT LOUNGE — SEA RAY



**Builder:** SEA RAY

**Year Built:** 2000

**Model:** cruiser

**Price:** \$164,900 USD

**Location:** United States

**LOA:** 41' 1" (12.52mm)

**Beam:** 13.83

**Min Draft:** 3' 4" (1.02mm)

**Max Draft:** 3' 4" (1.02mm)

Our experienced yacht broker, Andrey Shestakov, will help you choose and buy a yacht that best suits your needs **PILOT LOUNGE — SEA RAY** from our catalogue. Presently, at **Shestakov Yacht Sales Inc.**, we have a wide variety of yachts available on our sale's list. We also work in close contact with all the big **yacht manufacturers** from all over the world.

If you would like to buy a yacht **PILOT LOUNGE — SEA RAY** or would like help answering any questions concerning purchasing, selling or chartering a yacht, please call **+1(954)274-4435**

# TABLE OF CONTENTS

---

TABLE OF CONTENTS	2
SPECIFICATIONS	4
Overview	4
Basic Information	4
Dimensions	4
Speed, Capacities and Weight	4
Accommodations	5
Hull and Deck Information	5
Engine Information	5
PHOTOS	6
A2	6
A1	6
A3	6
A4	6
A5	7
A6	7
A7	7
A8	7
A9	8
B	8
B1	8
C	8
C1	9
C2	9
C3	9
C4	9
C5	10
C6	10

---

C8	10
C7	10
C9	11
D1	11
CONTACTS	12
Contact details	12
Telephones	12
Office hours	12
Address	12

---

---

# SPECIFICATIONS

---

## Overview

---

### FRESH WATER SINCE NEW

Always Stored Indoors During the Winter Months

Powered with Twin Cummins 6CTA Diesels / 430 HP each

New Bow Thruster, Raymarine Electronics, New Canvas, New Cockpit Carpet, Cherry Interior + Much More

### OWNER MOVING UP - PRICED FOR IMMEDIATE SALE

---

## Basic Information

---

**Category:** cruiser

**Sub Category:** Express

**Model Year:** 2000

**Year Built:** 2000

**Country:** United States

---

## Dimensions

---

**LOA:** 41' 1" (12.52mm)

**Beam:** 13.83

**Min Draft:** 3' 4" (1.02mm)

**Max Draft:** 3' 4" (1.02mm)

---

## Speed, Capacities and Weight

---

**Water Capacity:** 100 Gallons

**Holding Tank:** 42 Gal Gallons

**Fuel Capacity:** 335 Gal Gallons

---

## Accommodations

---

**Total Cabins:** 2

---

## Hull and Deck Information

---

**Hull Material:** Fiberglass

---

## Engine Information

---

**Engines:** 2

**Manufacturer:** Cummins

**Engine Type:** Inboard

**Fuel Type:** Diesel

# PHOTOS

**A1**



**A2**



**A3**



**A4**



**A5**



**A6**



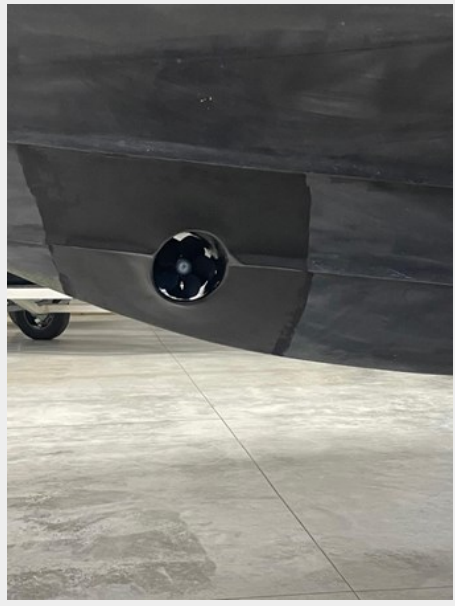
**A7**



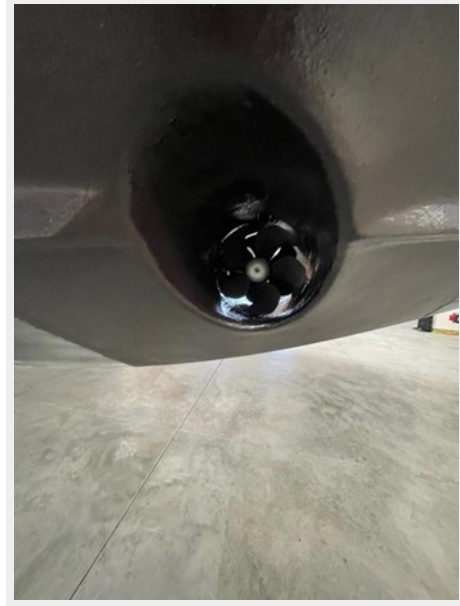
**A8**



**A9**



**B**



**B1**



**C**





C1



C2



C3



C4



C5



C6



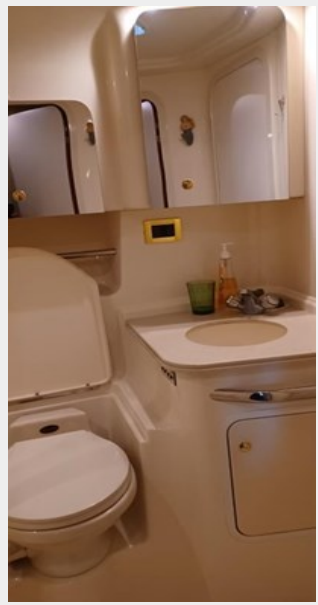
C8



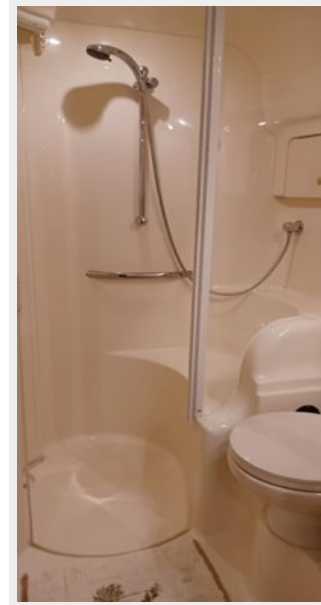
C7



**C9**



**D1**



# CONTACTS

---

Andrey Shestakov, leading yacht broker of the sales department of Shestakov Yacht Sales Inc. Shestakov Yacht Sales Inc., the official representative of the Miami/Fort Lauderdale FL headquarters.

## Contact details

---

Email: **andrey@shestakovyachtsales.com**

Web: [shestakovyachtsales.com/en/](http://shestakovyachtsales.com/en/)

## Telephones

---

USA: **+1(954)274-4435**

## Office hours

---

Monday – Saturday: **9:00 - 21:00** EDT

Sunday: **closed**

## Address

---



Harbour Towne Marina, 850 NE 3rd St, STE 213, Dania, FL 33004