

MAIORA 35 DP — MAIORA



Builder: MAIORA

Year Built: 2009

Model: Flybridge

Price: €4,300,000 EUR

Location: Greece

LOA: 114' 10" (35mm)

Beam: 23.22

Min Draft: 6' (1.83mm)

Max Draft: 6' 10" (2.08mm)

Cruise Speed: 22 Knots Kts. (25 MPH)

Max Speed: 26.5 Knots Kts. (31 MPH)

Our experienced yacht broker, Andrey Shestakov, will help you choose and buy a yacht that best suits your needs **Maiora 35 dp — MAIORA** from **our catalogue**. Presently, at **Shestakov Yacht Sales Inc.**, we have a wide variety of yachts available on **our sale's list**. We also work in close contact with all the big **yacht manufacturers** from all over the world.

If you would like to buy a yacht **Maiora 35 dp — MAIORA** or would like help answering any questions concerning purchasing, selling or chartering a yacht, please call **+1(954)274-4435**

TABLE OF CONTENTS

| | |
|----------------------------------------|---|
| TABLE OF CONTENTS | 2 |
| SPECIFICATIONS | 4 |
| Overview | 4 |
| Basic Information | 4 |
| Dimensions | 4 |
| Speed, Capacities and Weight | 5 |
| Accommodations | 5 |
| Hull and Deck Information | 5 |
| Engine Information | 5 |
| PHOTOS | 6 |
| Maiora 35DP Parsifal Yachting Sales 3 | 6 |
| Maiora 35DP Parsifal Yachting Sales 4 | 6 |
| Maiora 35DP Parsifal Yachting Sales 5 | 6 |
| Maiora 35DP Parsifal Yachting Sales 7 | 6 |
| Maiora 35DP Parsifal Yachting Sales 11 | 6 |
| Maiora 35DP Parsifal Yachting Sales 9 | 6 |
| Maiora 35DP Parsifal Yachting Sales 13 | 7 |
| Maiora 35DP Parsifal Yachting Sales 14 | 7 |
| Maiora 35DP Parsifal Yachting Sales 15 | 7 |
| Maiora 35DP Parsifal Yachting Sales 17 | 7 |
| Maiora 35DP Parsifal Yachting Sales 18 | 7 |
| Maiora 35DP Parsifal Yachting Sales 21 | 7 |
| Maiora 35DP Parsifal Yachting Sales 22 | 8 |
| Maiora 35DP Parsifal Yachting Sales 25 | 8 |
| Maiora 35DP Parsifal Yachting Sales 26 | 8 |
| Maiora 35DP Parsifal Yachting Sales 27 | 8 |
| Maiora 35DP Parsifal Yachting Sales 29 | 8 |
| Maiora 35DP Parsifal Yachting Sales 30 | 8 |

| | |
|----------------------------------------|-----------|
| Maiora 35DP Parsifal Yachting Sales 32 | 9 |
| Maiora 35DP Parsifal Yachting Sales 34 | 9 |
| Maiora 35DP Parsifal Yachting Sales 40 | 9 |
| Maiora 35DP Parsifal Yachting Sales 41 | 9 |
| Maiora 35DP Parsifal Yachting Sales 47 | 9 |
| Maiora 35DP Parsifal Yachting Sales 56 | 9 |
| Maiora 35DP Parsifal Yachting Sales 57 | 10 |
| Maiora 35DP Parsifal Yachting Sales 58 | 10 |
| Maiora 35DP Parsifal Yachting Sales 59 | 10 |
| Maiora 35DP Parsifal Yachting Sales 60 | 10 |
| Maiora 35DP Parsifal Yachting Sales 62 | 10 |
| CONTACTS | 11 |
| Contact details | 11 |
| Telephones | 11 |
| Office hours | 11 |
| Address | 11 |

SPECIFICATIONS

Overview

We are proud to present one of the finest Maiora 35DP yachts currently on the market. Built in 2009 and meticulously refitted in 2023/24, this vessel has been maintained in immaculate, like-new condition by her owners. Recent upgrades include a state-of-the-art audio/video system, a Seakeeper stabilizer, and Starlink connectivity.

Accommodating up to 11 guests, she boasts 5 elegantly appointed cabins. This includes a stylish cabin on the main deck, two full-beam cabins on the lower deck—one of which is a master suite featuring a private lounge and office area—and two twin cabins, one with a bunk bed.

Powered by twin MTU 4000 engines, she cruises comfortably at 22 knots and reaches a top speed of 26 knots.

Whether you're looking for private enjoyment or charter potential, this 35-meter yacht is an exceptional opportunity and a must-see.

Basic Information

Category: Flybridge

Sub Category: Flybridge

Model Year: 2009

Year Built: 2009

Country: Greece

Dimensions

LOA: 114' 10" (35mm)

Beam: 23.22

Min Draft: 6' (1.83mm)

Max Draft: 6' 10" (2.08mm)

Speed, Capacities and Weight

Cruise Speed: 22 Knots Kts. (25 MPH) **Max Speed:** 26.5 Knots Kts. (31 MPH)

Max Speed Range: 500 Kts.

Gross Tonnage: 140 Pounds

Water Capacity: 4000 Gallons

Fuel Capacity: 6340.13 Gal Gallons

Fuel Consumption: 198.13 Gal Gallons

Accommodations

Total Cabins: 5

Total Berths: 6

Sleeps: 10

Total Heads: 5

Crew Cabin: 6

Crew Berths: 6

Crew Heads: 3

Hull and Deck Information

Hull Material: Fiberglass

Deck Material: Teak

Hull Configuration: Semi-Displacement **Hull Designer:** Roberto Del Re

Interior Designer: Maiora - Fipa Group

Engine Information

Engines: 2

Manufacturer: MTU

Engine Type: Inboard

Fuel Type: Diesel

PHOTOS

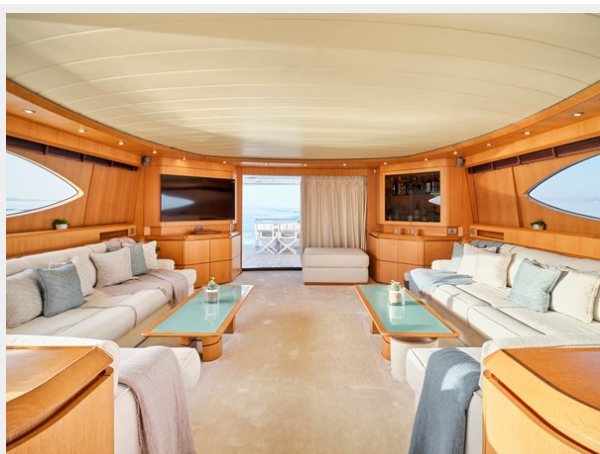
Maiora 35DP Parsifal Yachting Sales 3 Maiora 35DP Parsifal Yachting Sales 4



Maiora 35DP Parsifal Yachting Sales 5 Maiora 35DP Parsifal Yachting Sales 7



Maiora 35DP Parsifal Yachting Sales 9



Maiora 35DP Parsifal Yachting Sales 11



**Maiora 35DP Parsifal Yachting Sales
13**



**Maiora 35DP Parsifal Yachting Sales
14**



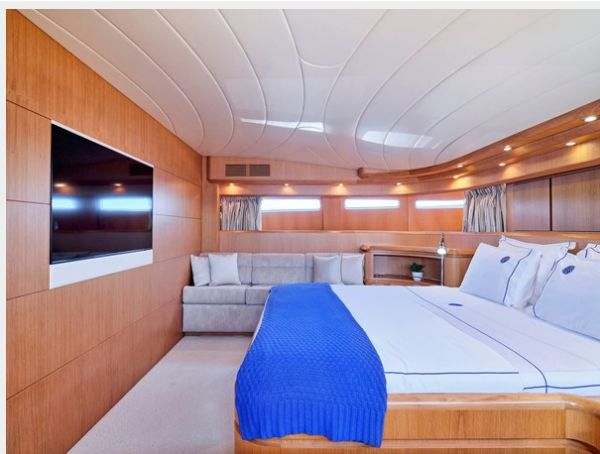
**Maiora 35DP Parsifal Yachting Sales
15**



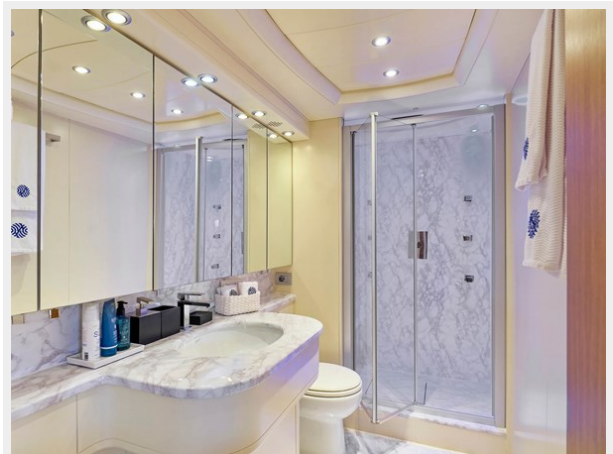
**Maiora 35DP Parsifal Yachting Sales
17**



**Maiora 35DP Parsifal Yachting Sales
18**



**Maiora 35DP Parsifal Yachting Sales
21**



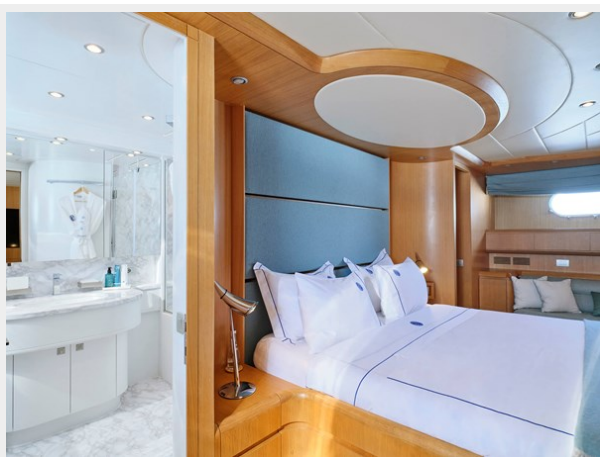
**Maiora 35DP Parsifal Yachting Sales
22**



**Maiora 35DP Parsifal Yachting Sales
25**



**Maiora 35DP Parsifal Yachting Sales
26**



**Maiora 35DP Parsifal Yachting Sales
27**



**Maiora 35DP Parsifal Yachting Sales
29**



**Maiora 35DP Parsifal Yachting Sales
30**



**Maiora 35DP Parsifal Yachting Sales
32**



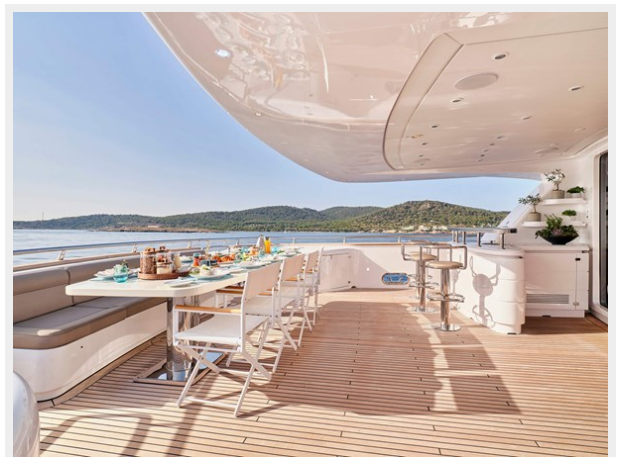
**Maiora 35DP Parsifal Yachting Sales
34**



**Maiora 35DP Parsifal Yachting Sales
40**



**Maiora 35DP Parsifal Yachting Sales
41**



**Maiora 35DP Parsifal Yachting Sales
47**



**Maiora 35DP Parsifal Yachting Sales
56**



**Maiora 35DP Parsifal Yachting Sales
57**



**Maiora 35DP Parsifal Yachting Sales
58**



**Maiora 35DP Parsifal Yachting Sales
59**



**Maiora 35DP Parsifal Yachting Sales
60**



Maiora 35DP Parsifal Yachting Sales 62



CONTACTS

Andrey Shestakov, leading yacht broker of the sales department of Shestakov Yacht Sales Inc. Shestakov Yacht Sales Inc., the official representative of the Miami/Fort Lauderdale FL headquarters.

Contact details

Email: **andrey@shestakovyachtsales.com**

Web: shestakovyachtsales.com/en/

Telephones

USA: **+1(954)274-4435**

Office hours

Monday – Saturday: **9:00 - 21:00** EDT

Sunday: **closed**

Address



Harbour Towne Marina, 850 NE 3rd St, STE 213, Dania, FL 33004