

GAMMA — PERSHING



Builder: PERSHING

Year Built: 2007

Model: Motor Yacht

Price: \$2,990,000 USD

Location: China

LOA: 116' 1" (35.37mm)

Beam: 23.62

Min Draft: 4' 9" (1.44mm)

Cruise Speed: 28 Knots Kts. (32 MPH)

Max Speed: 34 Knots Kts. (39 MPH)

Our experienced yacht broker, Andrey Shestakov, will help you choose and buy a yacht that best suits your needs **GAMMA — PERSHING** from **our catalogue**. Presently, at **Shestakov Yacht Sales Inc.**, we have a wide variety of yachts available on **our sale's list**. We also work in close contact with all the big **yacht manufacturers** from all over the world.

If you would like to buy a yacht **GAMMA — PERSHING** or would like help answering any questions concerning purchasing, selling or chartering a yacht, please call **+1(954)274-4435**

TABLE OF CONTENTS

TABLE OF CONTENTS	2
SPECIFICATIONS	4
Overview	4
Basic Information	4
Dimensions	5
Speed, Capacities and Weight	5
Accommodations	5
Hull and Deck Information	5
Engine Information	5
PHOTOS	6
2007-pershing-115-gamma	6
2007-pershing-115-gamma	6
2007-pershing-115-gamma	6
2007-pershing-115-gamma	6
2007-pershing-115-gamma	6
2007-pershing-115-gamma	6
2007-pershing-115-gamma	7
2007-pershing-115-gamma	7
2007-pershing-115-gamma	7
2007-pershing-115-gamma	7
2007-pershing-115-gamma	7
2007-pershing-115-gamma	7
2007-pershing-115-gamma	8
2007-pershing-115-gamma	8
2007-pershing-115-gamma	8
2007-pershing-115-gamma	8
2007-pershing-115-gamma	8
2007-pershing-115-gamma	8

2007-pershing-115-gamma	9
2007-pershing-115-gamma	9
2007-pershing-115-gamma	9
2007-pershing-115-gamma	9
2007-pershing-115-gamma	9
2007-pershing-115-gamma	9
CONTACTS	10
Contact details	10
Telephones	10
Office hours	10
Address	10

SPECIFICATIONS

Overview

Key Features :

- SEAKEEPER stabilisers (SK16 & SK35) installed in 2017
- 3 guest cabins sleeping 7 guests
- Incredible master with adjoining office and ensuite bathtub
- Open saloon layout offering amazing space
- Stylish interior decor
- Huge garage for a tender up to 4,5m
- Fore garage for up to 2 jet skis
- 189 GT, one of the biggest of her range

The PERSHING 115 boasts a timeless design which has kept her in the brand's catalogue until 2013. The superyacht features exterior design by Ital Projects – Fulvio de Simoni, while her interior was designed by Winch Design, with naval architecture by Pershing S.p.a. and Ital Projects – Fulvio de Simoni. Up to 7 guests are accommodated on board the superyacht Gamma, and she also has accommodation for 5 crew members including the captain of Gamma. The Pershing 115 yacht Gamma has a GRP hull and superstructure. She is powered by 2 MTU jet engines which offers a cruising speed of 28 knots and a top speed of 34 knots.

Gamma is an Italian high performance Pershing 115 superyacht which boasts a length overall of 35,4 m. Delivered in 2007, the superyacht has a beam of 7,2 m, a draft of 2,2 m and a volume of 189 GT.

Basic Information

Category: Motor Yacht

Sub Category: Motor Yacht

Model Year: 2007

Year Built: 2007

Country: China

Dimensions

LOA: 116' 1" (35.37mm)

Beam: 23.62

Min Draft: 4' 9" (1.44mm)

Speed, Capacities and Weight

Cruise Speed: 28 Knots Kts. (32 MPH) **Cruise Speed Range:** 300

Max Speed: 34 Knots Kts. (39 MPH)

Gross Tonnage: 189 Pounds

Water Capacity: 3000 Gallons

Fuel Capacity: 4358.84 Gal Gallons

Accommodations

Total Cabins: 3

Sleeps: 6

Total Heads: 4

Crew Cabin: 5

Crew Heads: 2

Hull and Deck Information

Hull Material: GRP

Deck Material: Teak

Hull Configuration: Planing

Engine Information

Engines: 2

Manufacturer: MTU

Engine Type: Inboard

Fuel Type: Diesel

PHOTOS

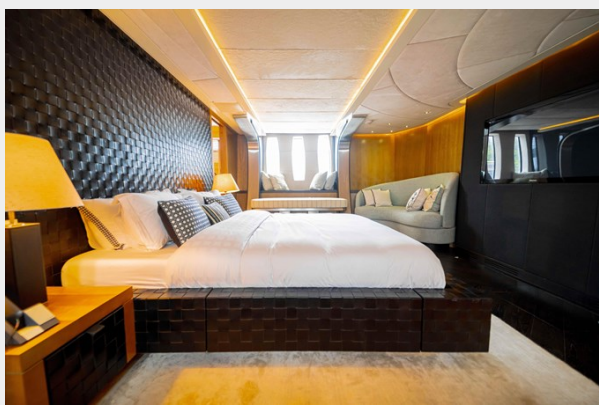
2007-pershing-115-gamma



2007-pershing-115-gamma



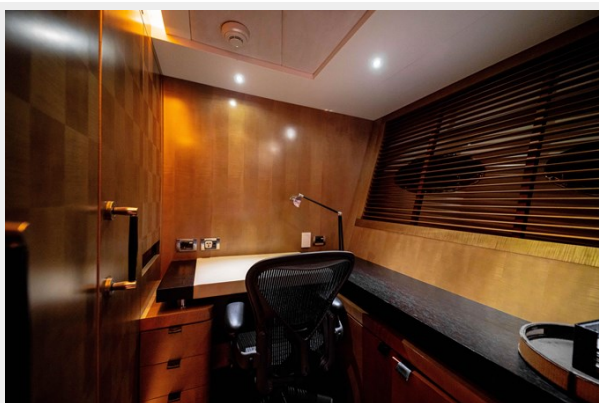
2007-pershing-115-gamma



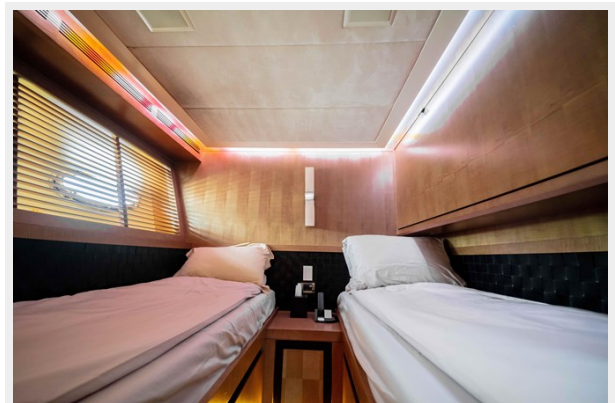
2007-pershing-115-gamma



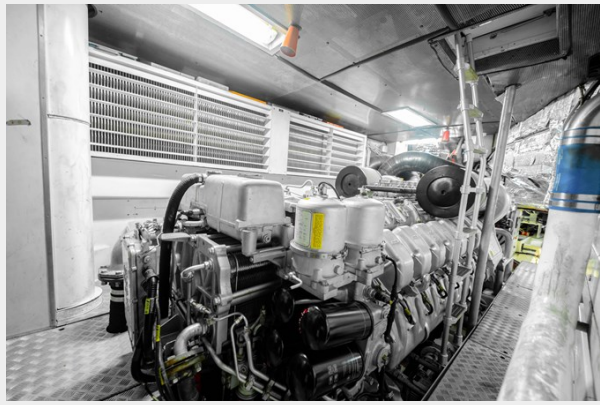
2007-pershing-115-gamma



2007-pershing-115-gamma



2007-pershing-115-gamma



2007-pershing-115-gamma



2007-pershing-115-gamma



2007-pershing-115-gamma



2007-pershing-115-gamma



2007-pershing-115-gamma



2007-pershing-115-gamma



2007-pershing-115-gamma



2007-pershing-115-gamma



2007-pershing-115-gamma



2007-pershing-115-gamma



2007-pershing-115-gamma



2007-pershing-115-gamma



2007-pershing-115-gamma



2007-pershing-115-gamma



2007-pershing-115-gamma



2007-pershing-115-gamma



2007-pershing-115-gamma



CONTACTS

Andrey Shestakov, leading yacht broker of the sales department of Shestakov Yacht Sales Inc. Shestakov Yacht Sales Inc., the official representative of the Miami/Fort Lauderdale FL headquarters.

Contact details

Email: **andrey@shestakovyachtsales.com**

Web: shestakovyachtsales.com/en/

Telephones

USA: **+1(954)274-4435**

Office hours

Monday – Saturday: **9:00 - 21:00** EDT

Sunday: **closed**

Address



Harbour Towne Marina, 850 NE 3rd St, STE 213, Dania, FL 33004