

43' JIM SMITH — JIM SMITH



Builder: JIM SMITH

LOA: 43' (13.11mm)

Year Built: 2016

Beam: 14.5

Model: Sport Fisherman

Price: \$1,395,000 USD

Location: United States

Our experienced yacht broker, Andrey Shestakov, will help you choose and buy a yacht that best suits your needs **43' Jim Smith — JIM SMITH** from **our catalogue**. Presently, at **Shestakov Yacht Sales Inc.**, we have a wide variety of yachts available on **our sale's list**. We also work in close contact with all the big **yacht manufacturers** from all over the world.

If you would like to buy a yacht **43' Jim Smith — JIM SMITH** or would like help answering any questions concerning purchasing, selling or chartering a yacht, please call **+1(954)274-4435**

TABLE OF CONTENTS

TABLE OF CONTENTS	2
SPECIFICATIONS	5
Overview	5
Basic Information	5
Dimensions	5
Speed, Capacities and Weight	5
Accommodations	5
Hull and Deck Information	5
Engine Information	6
PHOTOS	7
Starboard aft quarter	7
Cockpit	7
On the boat lift	7
Forward lounge and helm bench	7
Mercury controls, start stops and display panel	7
Centerline helm console	7
Thruster, auto tabs, autopilot, spotlight, VHF radios	8
Bridge Deck	8
Refrigeration beneath forward lounge	8
Profile	8
EZ-2-CY forward panels on new enclosure	8
Forward sunlounge pads covered	8
Bentley stitch sunlounge cushions forward deckhouse	9
New Canvas Designers cushions	9
Cabin entry steps	9
Helm air conditioning and EPIRB	9
Cabin looking aft, TV mounted above	9
Cabin looking forward	9

Bridge Deck A/C control and sliding cabin door	10
Main electrical panel	10
Forward cabin dinette	10
Table lowered	10
With filler cushion, extra berth	10
Galley looking aft, TV mounted above	10
Corian countertop with stainless sink	11
Microwave in cabinet	11
Under counter refrigerator	11
Amtico teak and holly sole	11
Galley drawers	11
Aft stateroom, port side berth	11
Aft stateroom starboard berth (pre-TV)	12
Aft stateroom, new TV	12
Seperate shower stall	12
Head with large mirror, Corian vanity	12
Tackle center and pump and light switch panel	12
Cockpit mezzanine seating	12
Cockpit with canvas fly cover	13
Transom livewell	13
Steps to bridge deck and walk-around side deck	13
Faux finished toe railing	13
Forward sunlounge with pillow cushion	13
New 2023 quad 350hp Verados	13
Verados mounted on integral transom	14
Lewmar windlass with stainless chute and blow anchor	14
Hardtop antennas, spotlight and Rupp radial outriggers	14
Forward towing eye	14
Transom with cockpit fly cover	14

Underway	14
Hull side at haulout	15
Hull side, note bow thruster	15
Forward hull entry	15
CONTACTS	16
Contact details	16
Telephones	16
Office hours	16
Address	16

SPECIFICATIONS

Overview

Cold-molded 43' Jim Smith walkaround with 2023 quad 350hp Mercury Verado outboards with approximately 370 hours and extended Platinum engine warranties from startup date. High style vessel with diesel generator, large bridge deck with A/C, Seakeeper gyro stabilizer, new KVH TV5 sat dome, and new EZ2CY enclosure plus Canvas Designers cushions and full bow lounge pad. Boat is kept out of water on a lift. Teak cockpit and cover boards with mezzanine seat and rocket launcher. Faux painted toe rail and full walkaround non-skid decks.

Basic Information

Category: Sport Fisherman

Model Year: 2017

Year Built: 2016

Country: United States

Dimensions

LOA: 43' (13.11mm)

Beam: 14.5

Speed, Capacities and Weight

Water Capacity: 100 Gallons

Fuel Capacity: 800 Gal Gallons

Accommodations

Total Cabins: 1

Total Heads: 1

Hull and Deck Information

Hull Material: Cold Molded

Hull Designer: Donald Blount

Engine Information

Engines: 4

Manufacturer: Mercury

Engine Type: Outboard

Fuel Type: Gas/Petrol

PHOTOS

Cockpit



Starboard aft quarter



On the boat lift



Forward lounge and helm bench



Centerline helm console



Mercury controls, start stops and display panel



Thruster, auto tabs, autopilot, spotlight, VHF radios



Bridge Deck



Refrigeration beneath forward lounge



Profile



Forward sunlounge pads covered



EZ-2-CY forward panels on new enclosure



**Bentley stitch sunlounge cushions
forward deckhouse**



New Canvas Designers cushions



Helm air conditioning and EPIRB



Cabin entry steps



Cabin looking aft, TV mounted above



Cabin looking forward



Main electrical panel



Bridge Deck A/C control and sliding cabin door



Forward cabin dinette



Table lowered



With filler cushion, extra berth



Galley looking aft, TV mounted above



Corian countertop with stainless sink



Microwave in cabinet



Under counter refrigerator



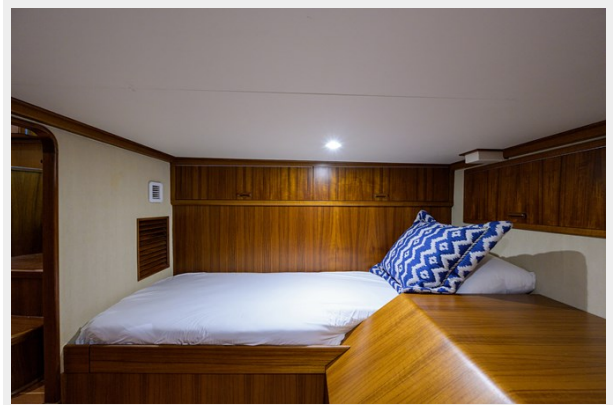
Amtico teak and holly sole



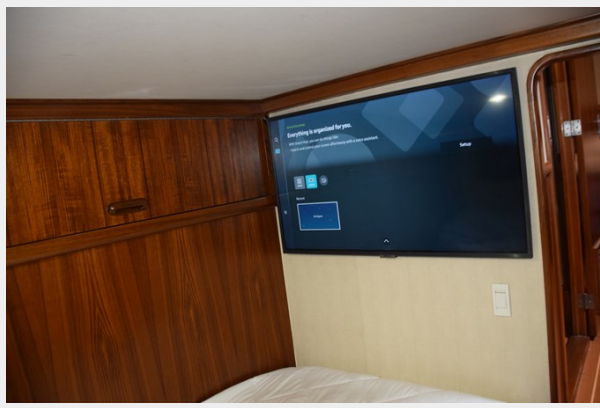
Galley drawers



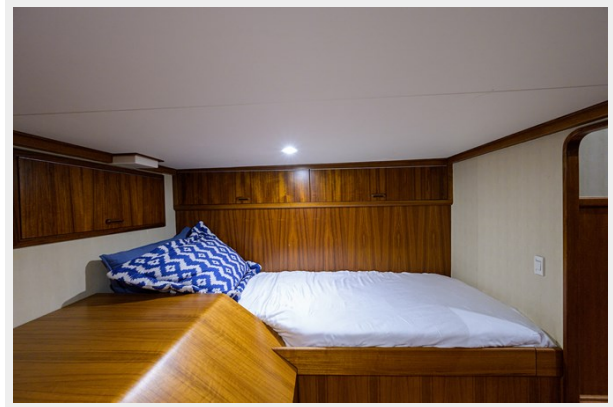
Aft stateroom, port side berth



Aft stateroom, new TV



Aft stateroom starboard berth (pre-TV)



Seperate shower stall



Head with large mirror, Corian vanity



Cockpit mezzanine seating



Tackle center and pump and light switch panel



Cockpit with canvas fly cover



Transom livewell



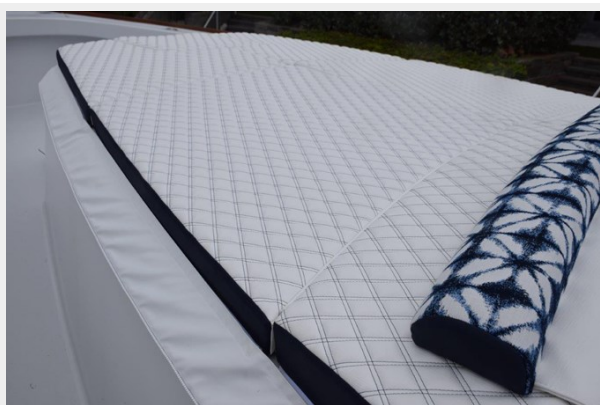
Steps to bridge deck and walk-around side deck



Faux finished toe railing



Forward sunlounge with pillow cushion



New 2023 quad 350hp Verados



Verados mounted on integral transom



Lewmar windlass with stainless chute and blow anchor



Hardtop antennas, spotlight and Rupp radial outriggers



Forward towing eye



Transom with cockpit fly cover



Underway



Hull side at haulout



Hull side, note bow thruster



Forward hull entry



CONTACTS

Andrey Shestakov, leading yacht broker of the sales department of Shestakov Yacht Sales Inc. Shestakov Yacht Sales Inc., the official representative of the Miami/Fort Lauderdale FL headquarters.

Contact details

Email: **andrey@shestakovyachtsales.com**

Web: shestakovyachtsales.com/en/

Telephones

USA: **+1(954)274-4435**

Office hours

Monday – Saturday: **9:00 - 21:00** EDT

Sunday: **closed**

Address



Harbour Towne Marina, 850 NE 3rd St, STE 213, Dania, FL 33004