

## WILLOW — PROVINCIAL



**Builder:** PROVINCIAL

**Year Built:** 1999

**Model:** Motor Yacht

**Price:** \$104,000 USD

**Location:** United States

**LOA:** 42' (12.8mm)

**Beam:** 13.08

**Min Draft:** 3' 9" (1.14mm)

**Max Draft:** 3' 9" (1.14mm)

Our experienced yacht broker, Andrey Shestakov, will help you choose and buy a yacht that best suits your needs **Willow — PROVINCIAL** from **our catalogue**. Presently, at **Shestakov Yacht Sales Inc.**, we have a wide variety of yachts available on **our sale's list**. We also work in close contact with all the big **yacht manufacturers** from all over the world.

If you would like to buy a yacht **Willow — PROVINCIAL** or would like help answering any questions concerning purchasing, selling or chartering a yacht, please call **+1(954)274-4435**

# TABLE OF CONTENTS

TABLE OF CONTENTS	2
SPECIFICATIONS	4
Overview	4
Basic Information	4
Dimensions	4
Speed, Capacities and Weight	4
Accommodations	5
Hull and Deck Information	5
Engine Information	5
PHOTOS	6
Cockpit	6
Bow	6
Table	6
Refrigerator	6
Cabin	7
Helm	7
Lower Helm	7
Instruments	7
CAptain Chair	7
Forward Cabin Double Bunk berth	7
Head	8
Forward Cabin Bow Locker	8
Shower	8
Stateroom	8
Stateroom Closet	9
Galley	9
Cockpit	9
Tuna Door	9

---

Fly Bridge	9
Fly Bridge Helm	9
INstruments FB	10
Bow	10
Work Horse	10
Generator	10
CONTACTS	11
Contact details	11
Telephones	11
Office hours	11
Address	11

# SPECIFICATIONS

---

## Overview

---

Willow, a 1999 Provincial 42 Pleasure Cruiser is available now and ready for Great Looping.

She is powered by a 3208TA Turbocharged diesel engine, rebuilt in 2011.

Turbocharger cleaned and tested/adjusted 2023.

Genset - Northern Lights

Dinghy with Torqueedo outboard

Updated canvas

Maintenance records available upon request.

## Basic Information

---

**Category:** Motor Yacht

**Sub Category:** Motor Yacht

**Model Year:** 1999

**Year Built:** 1999

**Country:** United States

## Dimensions

---

**LOA:** 42' (12.8mm)

**Beam:** 13.08

**Min Draft:** 3' 9" (1.14mm)

**Max Draft:** 3' 9" (1.14mm)

## Speed, Capacities and Weight

---

**Water Capacity:** 100 Gallons

**Holding Tank:** 50 Gal Gallons

**Fuel Capacity:** 700 Gal Gallons

---

## Accommodations

---

**Total Cabins:** 2

---

## Hull and Deck Information

---

**Hull Material:** Fiberglass

**Deck Material:** Fiberglass Sandwich

**Hull Configuration:** Semi-Displacement

---

## Engine Information

---

**Engines:** 1

**Manufacturer:** Caterpillar

**Engine Type:** Inboard

**Fuel Type:** Diesel

# PHOTOS

**Cockpit**



**Bow**



**Table**



**Refrigerator**



**Cabin**



**Helm**



**Lower Helm**



**Instruments**



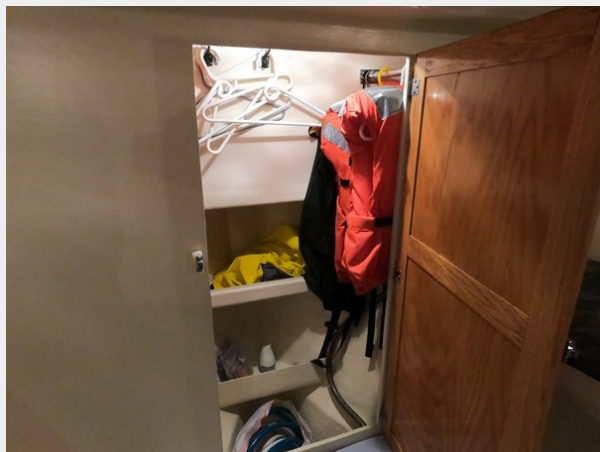
**Captain Chair**



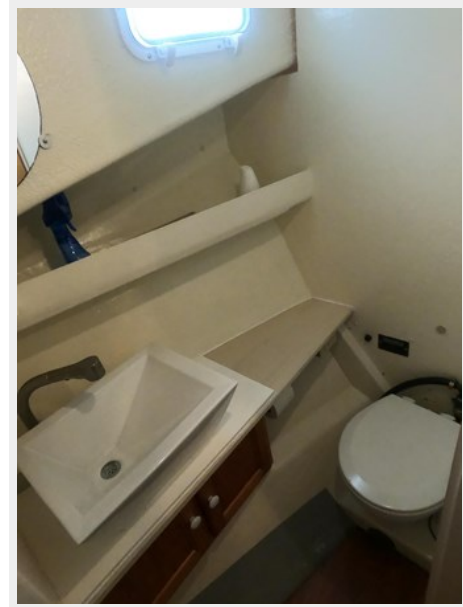
**Forward Cabin Double Bunk berth**



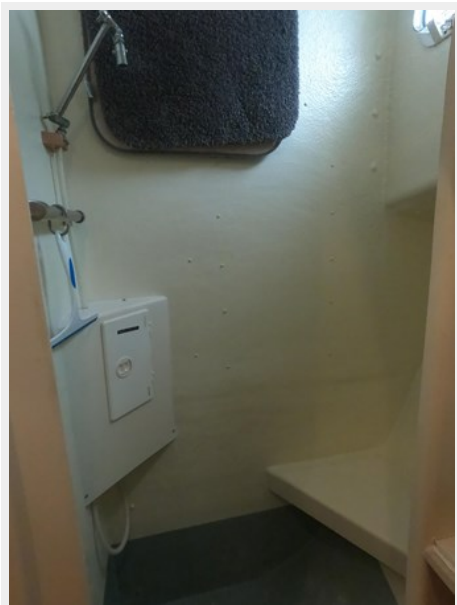
**Forward Cabin Bow Locker**



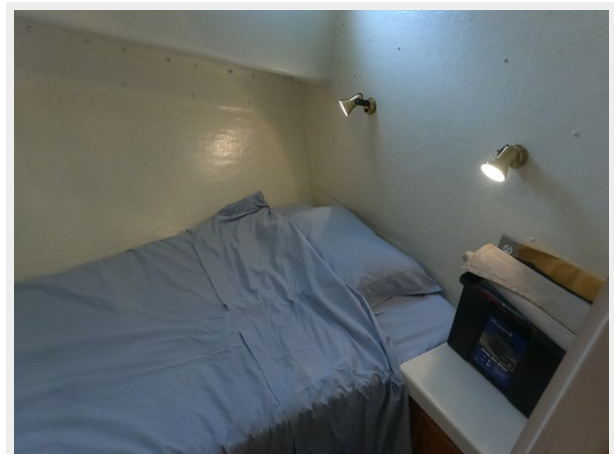
**Head**



**Shower**



**Stateroom**





**Stateroom Closet**



**Galley**



**Cockpit**



**Tuna Door**



**Fly Bridge**



**Fly Bridge Helm**



**INstruments FB**



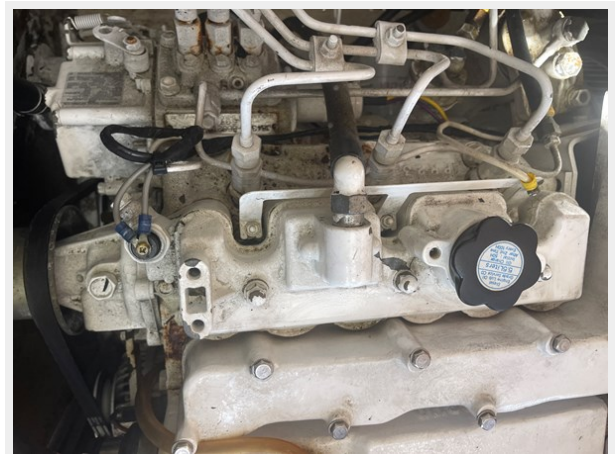
**Bow**



**Work Horse**



**Generator**



# CONTACTS

---

Andrey Shestakov, leading yacht broker of the sales department of Shestakov Yacht Sales Inc. Shestakov Yacht Sales Inc., the official representative of the Miami/Fort Lauderdale FL headquarters.

## Contact details

---

Email: **andrey@shestakovyachtsales.com**

Web: [shestakovyachtsales.com/en/](https://shestakovyachtsales.com/en/)

## Telephones

---

USA: **+1(954)274-4435**

## Office hours

---

Monday – Saturday: **9:00 - 21:00** EDT

Sunday: **closed**

## Address

---



Harbour Towne Marina, 850 NE 3rd St, STE 213, Dania, FL 33004