

LITTLE AUDREY — VIKING



Builder: VIKING

Year Built: 2011

Model: Sport Fisherman

Price: \$4,299,000 USD

Location: Australia

LOA: 82' (24.99mm)

Beam: 22.33

Max Draft: 5' 6" (1.68mm)

Cruise Speed: 30 Knots Kts. (35 MPH)

Max Speed: 34 Knots Kts. (39 MPH)

Our experienced yacht broker, Andrey Shestakov, will help you choose and buy a yacht that best suits your needs **LITTLE AUDREY — VIKING** from **our catalogue**. Presently, at **Shestakov Yacht Sales Inc.**, we have a wide variety of yachts available on **our sale's list**. We also work in close contact with all the big **yacht manufacturers** from all over the world.

If you would like to buy a yacht **LITTLE AUDREY — VIKING** or would like help answering any questions concerning purchasing, selling or chartering a yacht, please call **+1(954)274-4435**

TABLE OF CONTENTS

TABLE OF CONTENTS	2
SPECIFICATIONS	6
Overview	6
Basic Information	6
Dimensions	6
Speed, Capacities and Weight	7
Accommodations	7
Hull and Deck Information	7
Engine Information	7
PHOTOS	8
SM24016_005	8
SM24016_012	8
SM24016_014	8
SM24016_001	8
SM24016_020	8
SM24016_023	8
SM24016_025	9
SM24016_028	9
SM24016_029	9
SM24016_030	9
SM24016_033	9
SM24016_032	9
SM24016_034	10
SM24016_036	10
SM24016_038	10
SM24016_037	10
SM24016_039	11
SM24016_040	11

SM24016_042	11
SM24016_041	11
SM24016_045	11
SM24016_046	11
SM24016_048	12
SM24016_049	12
SM24016_051	12
SM24016_052	12
SM24016_053	12
SM24016_054	12
SM24016_055	13
SM24016_056	13
SM24016_057	13
SM24016_058	13
SM24016_059	13
SM24016_060	13
SM24016_061	14
SM24016_062	14
SM24016_063	14
SM24016_064	14
SM24016_066	14
SM24016_070	14
SM24016_072	15
SM24016_073	15
SM24016_074	15
SM24016_075	15
SM24016_077	15
SM24016_078	15
SM24016_081	16

SM24016_080	16
SM24016_082	16
SM24016_083	16
SM24016_085	17
SM24016_084	17
SM24016_088	17
SM24016_089	17
SM24016_091	18
SM24016_094	18
SM24016_096	18
SM24016_097	18
SM24016_104	18
SM24016_113	18
SM24016_119	19
SM24016_116	19
SM24016_120	19
SM24016_121	19
SM24016_123	19
SM24016_124	19
SM24016_132	20
SM24016_134	20
SM24016_143	20
SM24016_148	20
SM24016_149	20
SM24016_152	20
SM24016_161	21
SM24016_169	21
SM24016_170	21
CONTACTS	22

Contact details	22
Telephones	22
Office hours	22
Address	22

SPECIFICATIONS

Overview

As you step into the cockpit of LITTLE AUDREY you will be impressed by the volume of the teak cockpit. Below deck, you will find the Seakeeper gyro and large fish boxes, transom live well with tuna tubes, and air-conditioned mezzanine. As you enter the salon, you will notice the custom salon galley layout thoughtfully designed by the original owner with a yacht background. To port is a large (L) Shaped sofa with storage below and hi/low cocktail table. To port you will enter the enclosed flybridge via a spiral staircase. The custom galley opens the area to be accommodating to all and the large dinette provides ample seating. Forward and starboard you will find the large pantry with commercial-sized washer/dryer with drawer storage and large chest freezer.

Below you will find the full beam master aft with ensuite head, ample closet space, and storage. Aft and to port is the crew stateroom with over/under bunks, ensuite head, and ample storage space. Starboard aft is the guest stateroom with side-by-side beds, ensuite head, ample closet, and storage. Port forward is yet another guest stateroom with side-by-side berths with ensuite head ample closet and storage. Centerline forward is the queen berth with ensuite head large shower, ample closet, and storage space.

Basic Information

Category: Sport Fisherman

Model Year: 2011

Year Built: 2011

Country: Australia

Dimensions

LOA: 82' (24.99mm)

Beam: 22.33

Max Draft: 5' 6" (1.68mm)

Speed, Capacities and Weight

Cruise Speed: 30 Knots Kts. (35 MPH) **Max Speed:** 34 Knots Kts. (39 MPH)

Water Capacity: 450 Gallons

Holding Tank: 280 Gal Gallons

Fuel Capacity: 3496 Gal Gallons

Accommodations

Total Cabins: 4

Total Heads: 4

Hull and Deck Information

Hull Material: Fiberglass

Engine Information

Engines: 2

Manufacturer: MTU

Engine Type: Inboard

Fuel Type: Diesel

PHOTOS

SM24016_005



SM24016_012



SM24016_014



SM24016_001



SM24016_020



SM24016_023



SM24016_025



SM24016_028



SM24016_029



SM24016_030



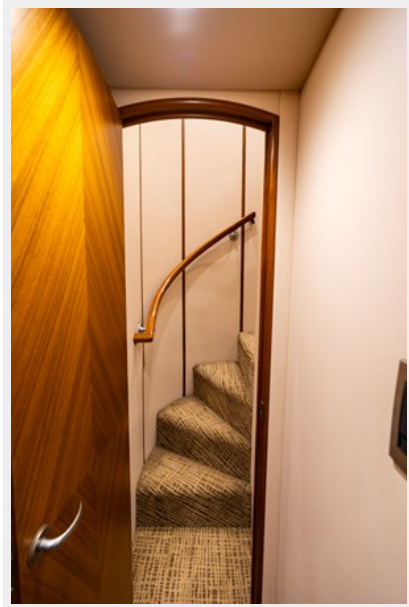
SM24016_033



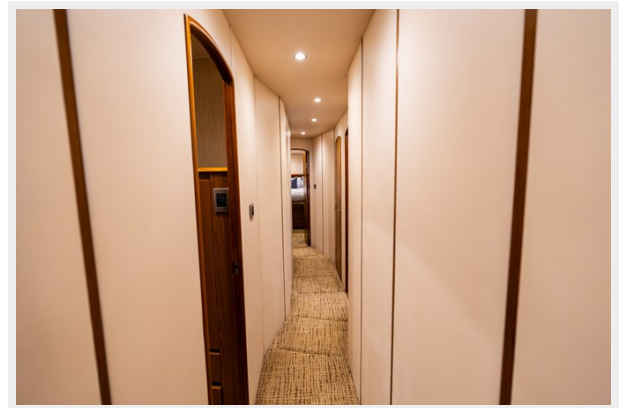
SM24016_032



SM24016_034



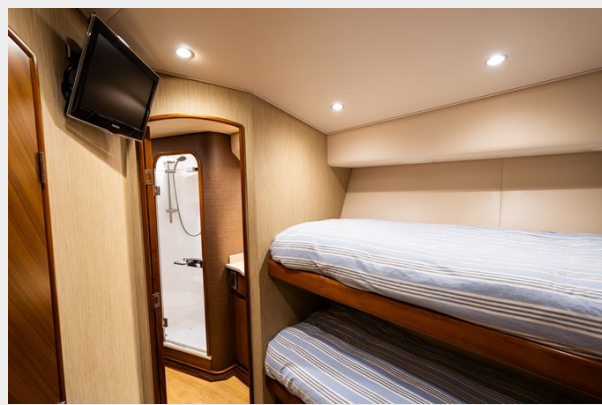
SM24016_036



SM24016_038



SM24016_037



SM24016_039



SM24016_040



SM24016_042



SM24016_041



SM24016_045



SM24016_046



SM24016_048



SM24016_049



SM24016_051



SM24016_052



SM24016_053



SM24016_054



SM24016_055



SM24016_056



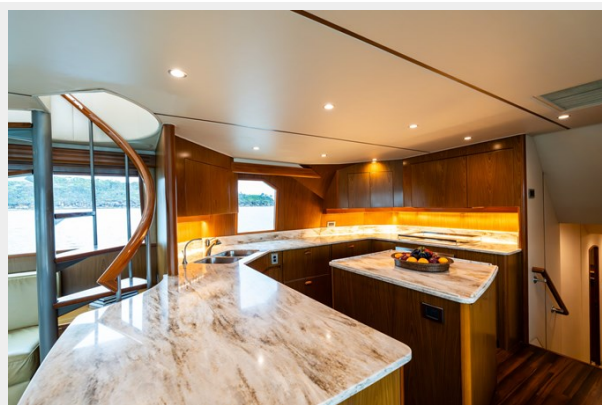
SM24016_057



SM24016_058



SM24016_059



SM24016_060



SM24016_061



SM24016_062



SM24016_063



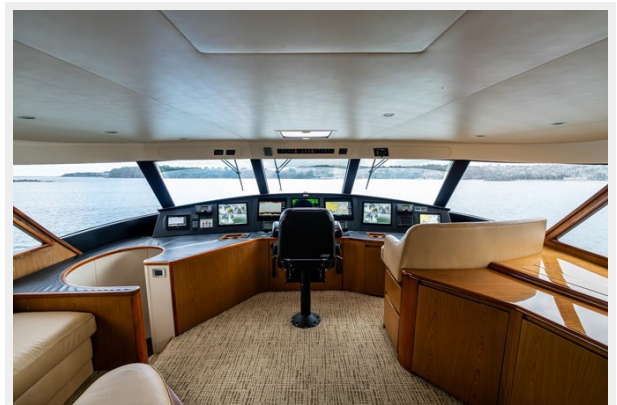
SM24016_064



SM24016_066



SM24016_070



SM24016_072



SM24016_073



SM24016_074



SM24016_075



SM24016_077



SM24016_078



SM24016_080



SM24016_081



SM24016_082



SM24016_083



SM24016_084



SM24016_085



SM24016_088



SM24016_089



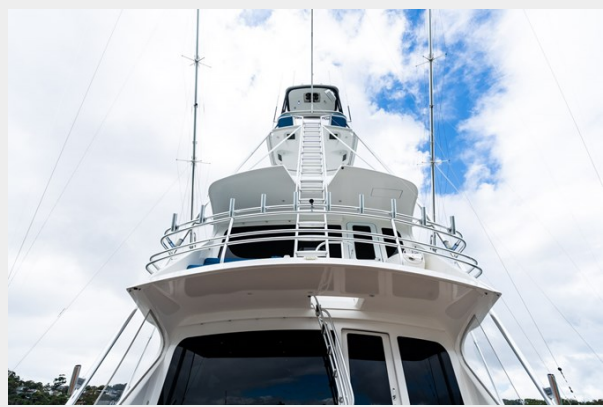
SM24016_091



SM24016_094



SM24016_096



SM24016_097



SM24016_104



SM24016_113



SM24016_116



SM24016_119



SM24016_120



SM24016_121



SM24016_123



SM24016_124



SM24016_132



SM24016_134



SM24016_143



SM24016_148



SM24016_149



SM24016_152



SM24016_161



SM24016_169



SM24016_170



CONTACTS

Andrey Shestakov, leading yacht broker of the sales department of Shestakov Yacht Sales Inc. Shestakov Yacht Sales Inc., the official representative of the Miami/Fort Lauderdale FL headquarters.

Contact details

Email: **andrey@shestakovyachtsales.com**

Web: shestakovyachtsales.com/en/

Telephones

USA: **+1(954)274-4435**

Office hours

Monday – Saturday: **9:00 - 21:00** EDT

Sunday: **closed**

Address



Harbour Towne Marina, 850 NE 3rd St, STE 213, Dania, FL 33004