

DIVERSION — SEA RAY



Builder: SEA RAY

Year Built: 2007

Model: cruiser

Price: \$424,900 USD

Location: United States

LOA: 48' 1" (14.66mm)

Beam: 14.66

Min Draft: 4' (1.22mm)

Max Draft: 4' (1.22mm)

Our experienced yacht broker, Andrey Shestakov, will help you choose and buy a yacht that best suits your needs **DIVERSION — SEA RAY** from our catalogue. Presently, at **Shestakov Yacht Sales Inc.**, we have a wide variety of yachts available on our sale's list. We also work in close contact with all the big **yacht manufacturers** from all over the world.

If you would like to buy a yacht **DIVERSION — SEA RAY** or would like help answering any questions concerning purchasing, selling or chartering a yacht, please call **+1(954)274-4435**

TABLE OF CONTENTS

TABLE OF CONTENTS	2
SPECIFICATIONS	4
Overview	4
Basic Information	4
Dimensions	4
Speed, Capacities and Weight	4
Accommodations	5
Hull and Deck Information	5
Engine Information	5
PHOTOS	6
2	6
3	6
4	6
5	6
7	7
6	7
8	7
9	7
11	7
10	7
11A	8
14	8
16	8
17	8
18	9
19	9
20	9
21	9

22	10
23	10
24	10
CONTACTS	11
Contact details	11
Telephones	11
Office hours	11
Address	11

SPECIFICATIONS

Overview

2007 48' Sea Ray Sundancer -- Pristine White Hull Vessel -- Spent Most of Her Life in the NorthEastern US where she has been Lightly Used

Powered with Twin Cummins QSC-540 Diesels / Only 845 Original Hours (INBOARD V-DRIVE NO PODS)

Loaded with Upgrades: Hydraulic Swim Platform, Updated Raymarine Electronics, Bow Thruster, Cockpit A/C + Heat, Wood Floors Throughout Salon & Galley, Teak Decks in Cockpit & Helm Area, Washer / Dryer + Much More!!

Basic Information

Category: cruiser

Sub Category: Express

Model Year: 2007

Year Built: 2007

Country: United States

Dimensions

LOA: 48' 1" (14.66mm)

Beam: 14.66

Min Draft: 4' (1.22mm)

Max Draft: 4' (1.22mm)

Speed, Capacities and Weight

Water Capacity: 110 Gallons

Holding Tank: 60 Gal Gallons

Fuel Capacity: 400 Gal Gallons

Accommodations

Total Cabins: 2

Hull and Deck Information

Hull Material: Fiberglass

Engine Information

Engines: 2

Manufacturer: Cummins

Engine Type: Inboard

Fuel Type: Diesel

PHOTOS

2



3



4



5



6



7



8



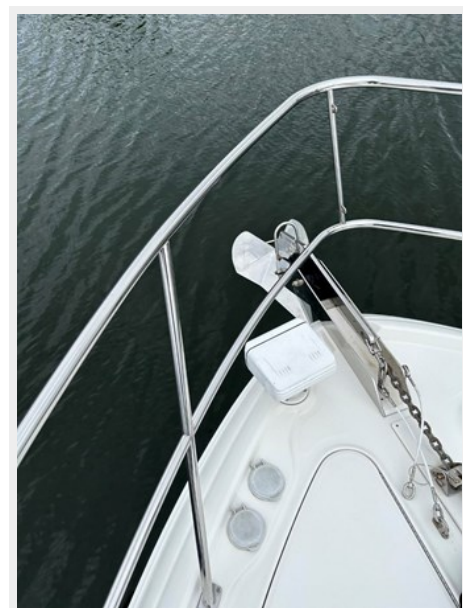
9



10



11



11A



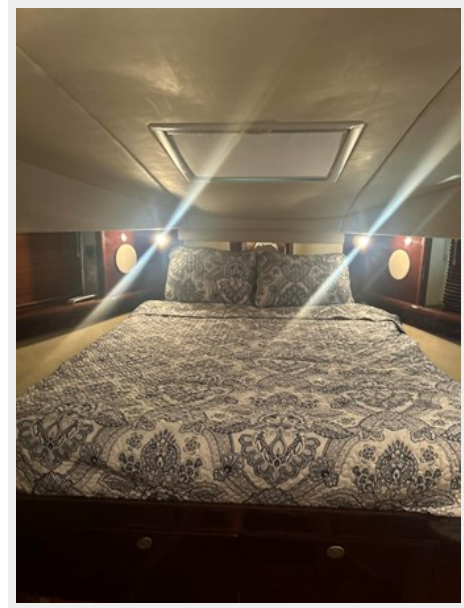
14



16



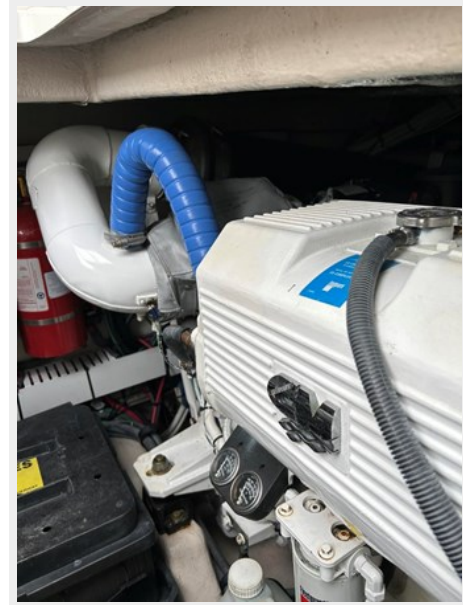
17



18



19



20



21



22



23



24



CONTACTS

Andrey Shestakov, leading yacht broker of the sales department of Shestakov Yacht Sales Inc. Shestakov Yacht Sales Inc., the official representative of the Miami/Fort Lauderdale FL headquarters.

Contact details

Email: **andrey@shestakovyachtsales.com**

Web: shestakovyachtsales.com/en/

Telephones

USA: **+1(954)274-4435**

Office hours

Monday – Saturday: **9:00 - 21:00** EDT

Sunday: **closed**

Address



Harbour Towne Marina, 850 NE 3rd St, STE 213, Dania, FL 33004