

85 CLASSIC — VICEM



Builder: VICEM

Year Built: 2006

Model: Motor Yacht

Price: \$1,495,000 USD

Location: N/A

LOA: 85' (25.91mm)

Beam: 20.66

Max Draft: 5' 10" (1.78mm)

Cruise Speed: 16.51 Knots Kts. (19 MPH)

Max Speed: 21.72 Knots Kts. (25 MPH)

Our experienced yacht broker, Andrey Shestakov, will help you choose and buy a yacht that best suits your needs **85 Classic — VICEM** from **our catalogue**. Presently, at **Shestakov Yacht Sales Inc.**, we have a wide variety of yachts available on **our sale's list**. We also work in close contact with all the big **yacht manufacturers** from all over the world.

If you would like to buy a yacht **85 Classic — VICEM** or would like help answering any questions concerning purchasing, selling or chartering a yacht, please call **+1(954)274-4435**

TABLE OF CONTENTS

TABLE OF CONTENTS	2
SPECIFICATIONS	5
Overview	5
Basic Information	5
Dimensions	5
Speed, Capacities and Weight	6
Accommodations	6
Hull and Deck Information	6
Engine Information	6
PHOTOS	7
DJI_0834	7
DJI_0822	7
DJI_0816	7
DJI_0813	7
DJI_0807	7
DJI_0799	7
DJI_0784	8
DJI_0782	8
DJI_0775	8
DJI_0762	8
DJI_0753	8
DJI_0750	8
DJI_0747	8
DJI_0841	8
DJI_0824	9
DJI_0742	9
DJI_0740	9
DJI_0738	9

DJI_0734	9
DJI_0732	9
685A0506	10
DJI_0731	10
685A0504	10
685A0503	10
685A0502	10
685A0501	10
685A0500	11
685A0499	11
685A0497	11
685A0495	11
685A0493	11
685A0490	11
685A0489	12
685A0487	12
685A0485	12
685A0481	12
685A0480	12
685A0476	12
685A0475	13
685A0473	13
685A0472	13
685A0469	13
685A0467	13
685A0466	13
685A0463	14
685A0458	14
685A0457	14

685A0456	14
685A0454	14
685A0450	14
685A0449	15
685A0447	15
685A0444	15
685A0443	15
685A0439	15
685A0436	15
685A0434	16
685A0431	16
685A0429	16
685A0426	16
685A0424	16
685A0422	16
685A0420	17
685A0414	17
685A0411	17
685A0409	17
685A0407	17
CONTACTS	18
Contact details	18
Telephones	18
Office hours	18
Address	18

SPECIFICATIONS

Overview

Original owner, built with project manager, and spec'd for US cruising. As one of the Classic series by Vicem, the 85' ESSENCE OF CAYMAN has the heart of a Downeast style yacht, blended with the modern form and function so well-known by the shipyard. Appointed to high standards, the yacht features two salons bathed in rich wood – on the main deck, and the lower deck – and accommodates 6 guests in 3 exquisite staterooms. Her king master suite features a seating area and vanity, a large walk-in wardrobe, and a full-beam en suite. Two twin guest staterooms feature their own en suite, as well as the same beautiful wood treatment found throughout the vessel.

A large main aft deck is ideal for al fresco meals, entertaining, and relaxing, and features an icemaker, fridge, and wet bar. From here, guests may enter the yacht into the main salon, while easy access to the water is aft.

2024 updates:

- Complete Exterior Paint
- Full bottom job and running gear service
- Full service hydraulic
- Starlink addition
- New exterior upholstery
- New Aft awning shade
- New A/c units

Basic Information

Category: Motor Yacht

Model Year: 2006

Year Built: 2006

Country: N/A

Dimensions

LOA: 85' (25.91mm)

Beam: 20.66

Max Draft: 5' 10" (1.78mm)

Speed, Capacities and Weight

Cruise Speed: 16.51 Knots Kts. (19 MPH)

Max Speed: 21.72 Knots Kts. (25 MPH)

Water Capacity: 500 Gallons

Fuel Capacity: 1895 Gal Gallons

Accommodations

Total Cabins: 3

Total Heads: 4

Hull and Deck Information

Hull Material: Composite

Engine Information

Engines: 1

Manufacturer: MAN

PHOTOS

DJI_0834



DJI_0822



DJI_0816



DJI_0813



DJI_0807



DJI_0799



DJI_0784



DJI_0782



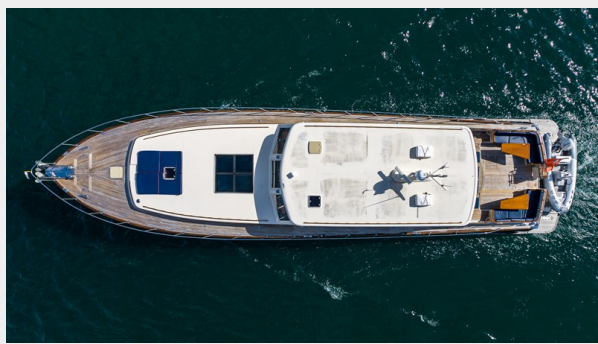
DJI_0775



DJI_0762



DJI_0753



DJI_0750



DJI_0747



DJI_0841



DJI_0824



DJI_0742



DJI_0740



DJI_0738



DJI_0734



DJI_0732



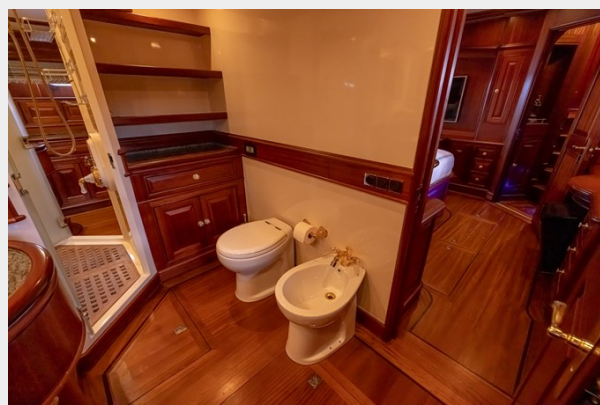
DJI_0731



685A0506



685A0504



685A0503



685A0502



685A0501



685A0500



685A0499



685A0497



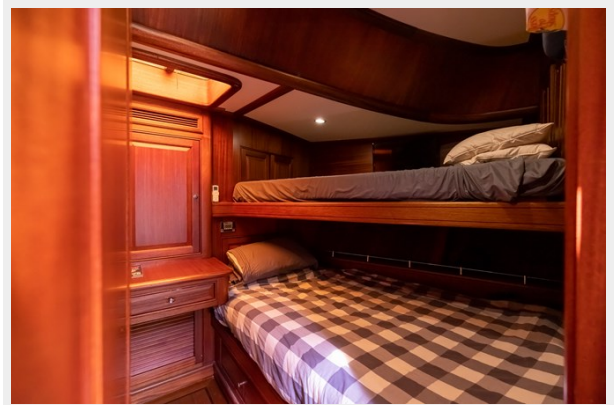
685A0495



685A0493



685A0490



685A0489



685A0487



685A0485



685A0481



685A0480



685A0476



685A0475



685A0473



685A0472



685A0469



685A0467



685A0466



685A0463



685A0458



685A0457



685A0456



685A0454



685A0450



685A0449



685A0447



685A0444



685A0443



685A0439



685A0436



685A0434



685A0431



685A0429



685A0426



685A0424



685A0422



685A0420



685A0414



685A0411



685A0409



685A0407



CONTACTS

Andrey Shestakov, leading yacht broker of the sales department of Shestakov Yacht Sales Inc. Shestakov Yacht Sales Inc., the official representative of the Miami/Fort Lauderdale FL headquarters.

Contact details

Email: **andrey@shestakovyachtsales.com**

Web: shestakovyachtsales.com/en/

Telephones

USA: **+1(954)274-4435**

Office hours

Monday – Saturday: **9:00 - 21:00** EDT

Sunday: **closed**

Address



Harbour Towne Marina, 850 NE 3rd St, STE 213, Dania, FL 33004