

## MOTORSAILLOR — CUSTOM



**Builder:** CUSTOM

**Year Built:** 1992

**Model:** Motorsailer

**Price:** €620,000 EUR

**Location:** Greece

**LOA:** 84' 10" (25.84mm)

**Beam:** 22.01

**Min Draft:** 9' 11" (3mm)

**Max Draft:** 9' 11" (3mm)

**Cruise Speed:** 9 Knots Kts. (10 MPH)

**Max Speed:** 12 Knots Kts. (14 MPH)

Our experienced yacht broker, Andrey Shestakov, will help you choose and buy a yacht that best suits your needs **MOTORSAILLOR — CUSTOM** from **our catalogue**. Presently, at **Shestakov Yacht Sales Inc.**, we have a wide variety of yachts available on **our sale's list**. We also work in close contact with all the big **yacht manufacturers** from all over the world.

If you would like to buy a yacht **MOTORSAILLOR — CUSTOM** or would like help answering any questions concerning purchasing, selling or chartering a yacht, please call **+1(954)274-4435**

# TABLE OF CONTENTS

---

TABLE OF CONTENTS	2
SPECIFICATIONS	6
Overview	6
Basic Information	6
Dimensions	6
Speed, Capacities and Weight	6
Accommodations	7
Hull and Deck Information	7
Engine Information	7
PHOTOS	8
IMG_0896	8
IMG_0897	8
IMG_0898	8
IMG_0899	8
IMG_0900	8
IMG_0901	8
IMG_0903	9
IMG_0905	9
IMG_0906	9
IMG_0909	9
IMG_0910	9
IMG_0911	9
IMG_0913	10
IMG_0914	10
IMG_0917	10
IMG_0916	10
IMG_0918	10
IMG_0919	10

---

IMG_0920	11
IMG_0921	11
IMG_0922	11
IMG_0923	11
IMG_0924	11
IMG_0925	11
IMG_0926	12
IMG_0927	12
IMG_0928	12
IMG_0929	12
IMG_0931	12
IMG_0932	12
IMG_0933	13
IMG_0934	13
IMG_0937	13
IMG_0939	13
IMG_0940	13
IMG_0941	13
IMG_0942	14
IMG_0943	14
IMG_0944	14
IMG_0945	14
IMG_0947	14
IMG_0949	14
IMG_0950	15
IMG_0951	15
IMG_0952	15
IMG_0954	15
IMG_0958	15

---

---

IMG_0959	15
IMG_0960	16
IMG_0961	16
IMG_0962	16
IMG_0963	16
IMG_0964	16
IMG_0965	16
IMG_0975	17
IMG_0976	17
IMG_0977	17
IMG_0980	17
IMG_0981	17
IMG_0982	17
IMG_0983	18
IMG_0984	18
IMG_0985	18
IMG_0986	18
IMG_0988	19
IMG_0991	19
IMG_0994	19
IMG_0995	19
IMG_0997	19
IMG_0998	19
IMG_0999	20
IMG_1002	20
IMG_0904	20
CONTACTS	21
Contact details	21
Telephones	21

---

---

Office hours	21
Address	21

---

# SPECIFICATIONS

---

## Overview

---

She is in very good condition Available "Where she is, as she is" The yacht can made up of 49 persons for a day charter or 12 pax accommodated at 6 cabins plus crew She needs only winter service.

6 cabins /6 wc

12 pax overnight

2 X 193 HP MTU 2 X GENERATOR/CBOW THRUSTER

## Basic Information

---

**Category:** Motorsailor

**Model Year:** 1992

**Year Built:** 1992

**Refit Type:** FULLY

**Country:** Greece

## Dimensions

---

**LOA:** 84' 10" (25.84mm)

**Beam:** 22.01

**Min Draft:** 9' 11" (3mm)

**Max Draft:** 9' 11" (3mm)

## Speed, Capacities and Weight

---

**Cruise Speed:** 9 Knots Kts. (10 MPH) **Max Speed:** 12 Knots Kts. (14 MPH)

---

## Accommodations

---

**Total Cabins:** 6

**Total Berths:** 12

**Sleeps:** 12

**Total Heads:** 6

**Crew Cabin:** 3

**Crew Berths:** 3

**Crew Heads:** 2

---

## Hull and Deck Information

---

**Hull Material:** Steel

**Deck Material:** Teak

**Hull Configuration:** Long Keel

---

## Engine Information

---

**Engines:** 2

**Manufacturer:** MTU

**Engine Type:** Inboard

**Fuel Type:** Diesel

# PHOTOS

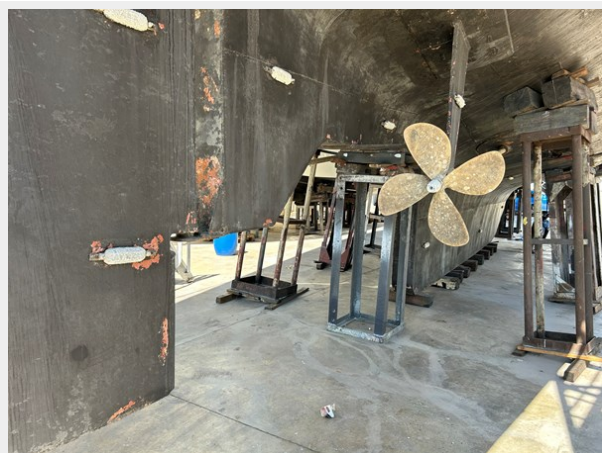
IMG\_0896



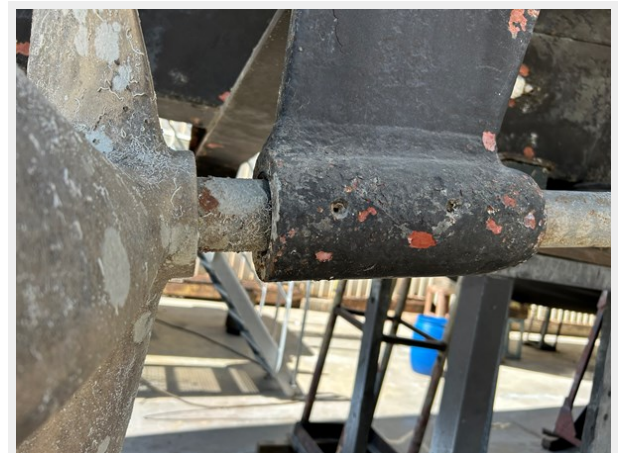
IMG\_0897



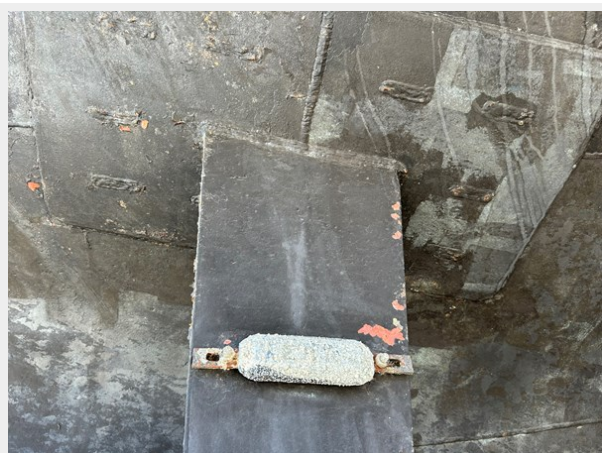
IMG\_0898



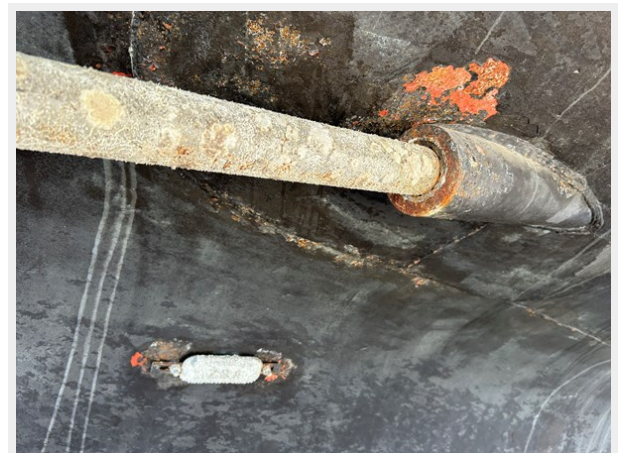
IMG\_0899



IMG\_0900



IMG\_0901





IMG\_0903



IMG\_0905



IMG\_0906



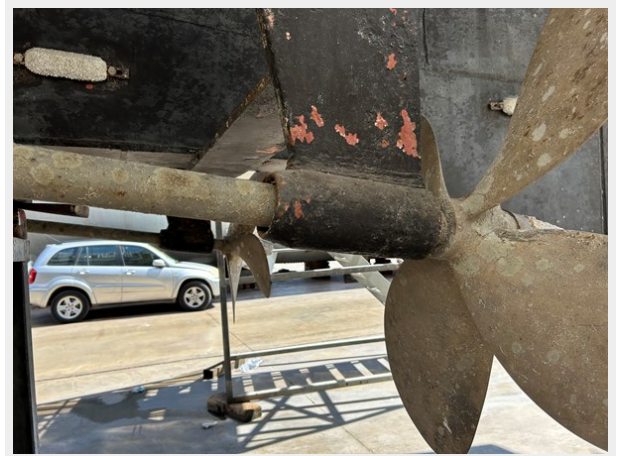
IMG\_0909



IMG\_0910



IMG\_0911



IMG\_0913



IMG\_0914



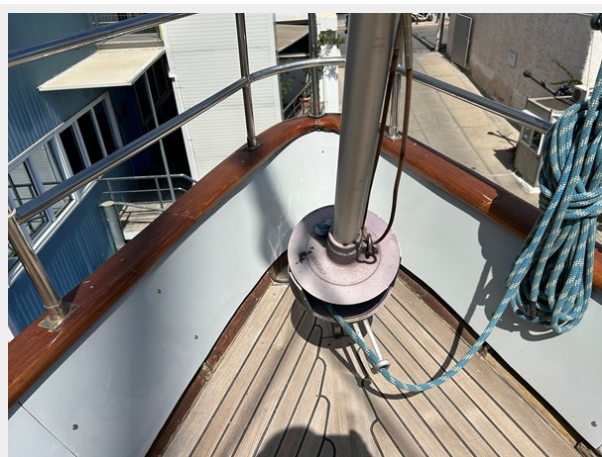
IMG\_0916



IMG\_0917



IMG\_0918



IMG\_0919



IMG\_0920



IMG\_0921



IMG\_0922



IMG\_0923



IMG\_0924



IMG\_0925



IMG\_0926



IMG\_0927



IMG\_0928



IMG\_0929



IMG\_0931



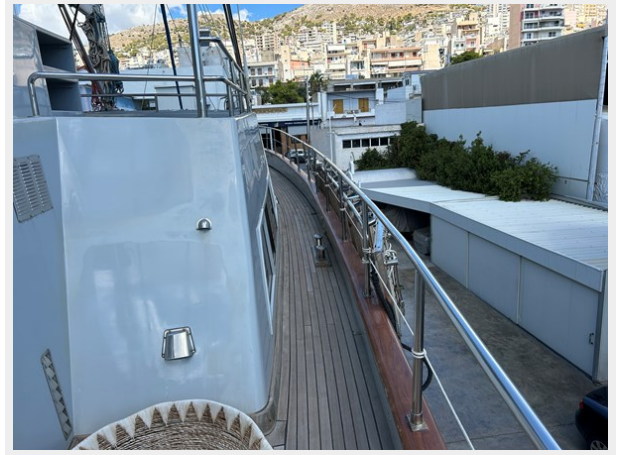
IMG\_0932



IMG\_0933



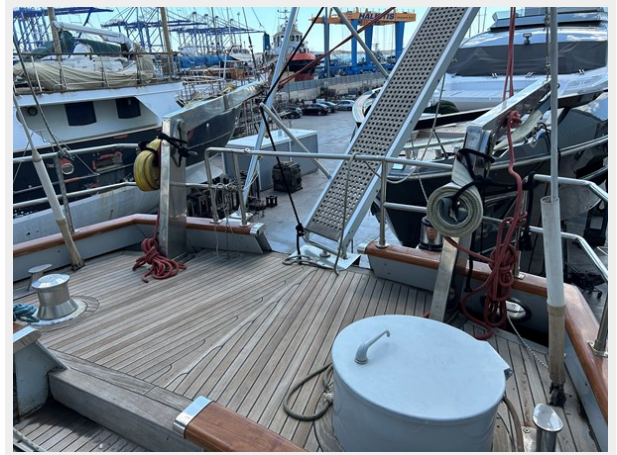
IMG\_0934



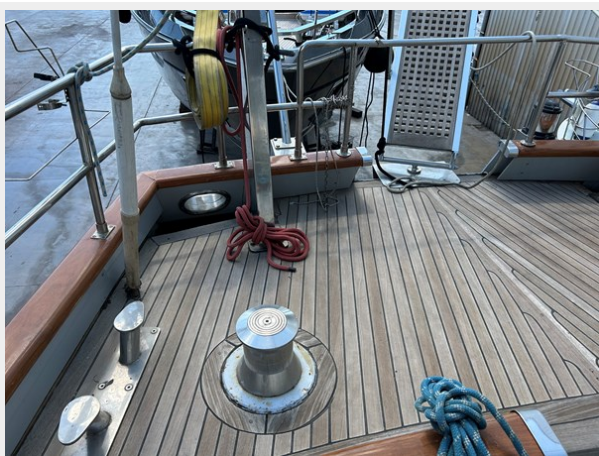
IMG\_0937



IMG\_0939



IMG\_0940



IMG\_0941



IMG\_0942



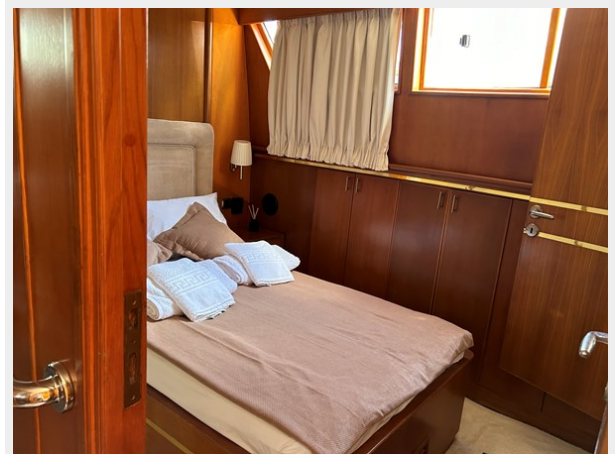
IMG\_0943



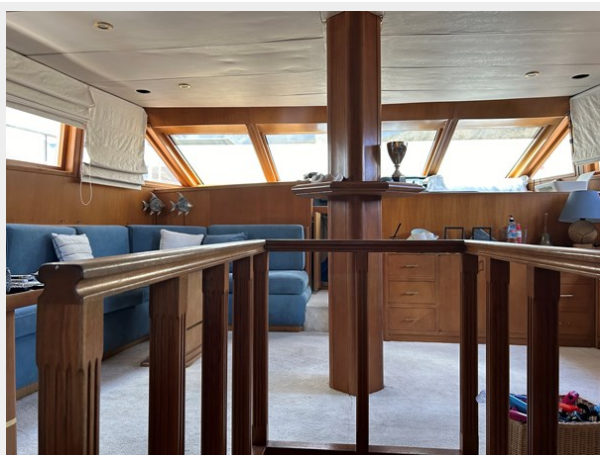
IMG\_0944



IMG\_0945



IMG\_0947



IMG\_0949



IMG\_0950



IMG\_0951



IMG\_0952



IMG\_0954



IMG\_0958



IMG\_0959



IMG\_0960



IMG\_0961



IMG\_0962



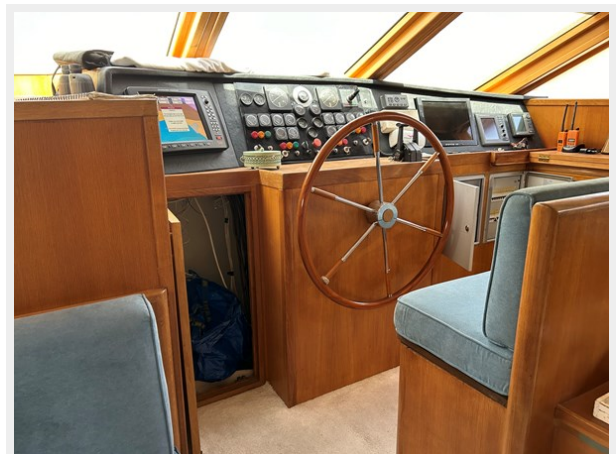
IMG\_0963



IMG\_0964



IMG\_0965

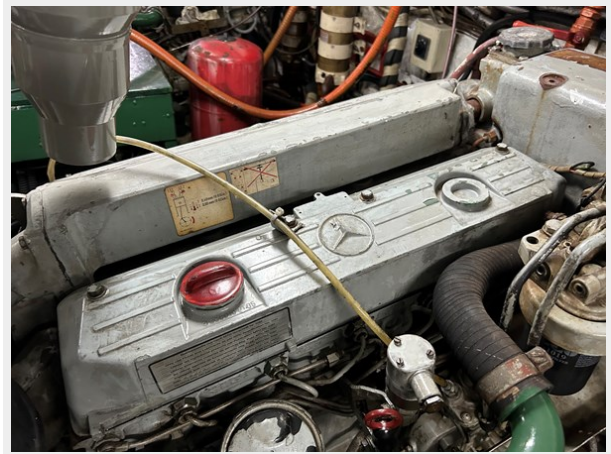




IMG\_0975



IMG\_0976



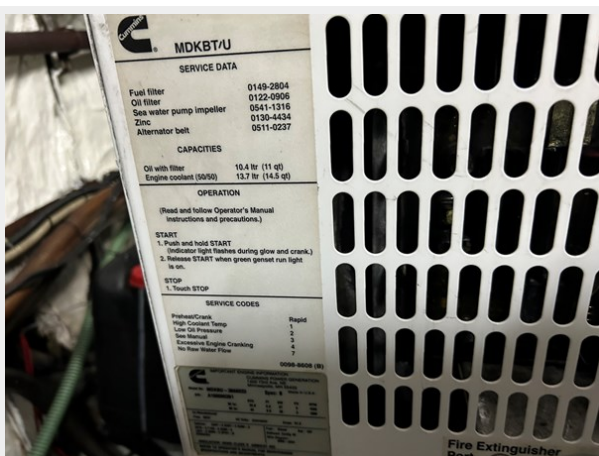
IMG\_0977



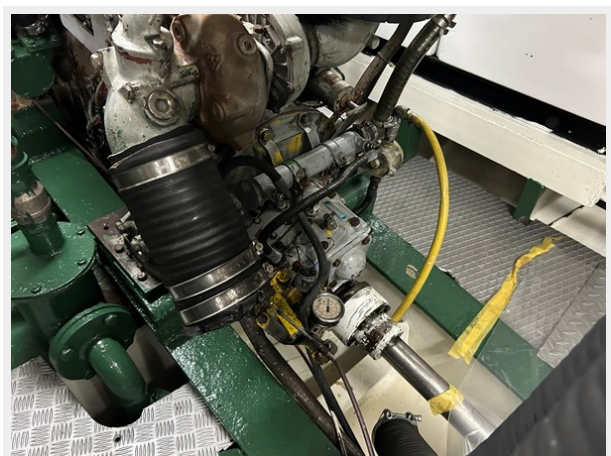
IMG\_0980



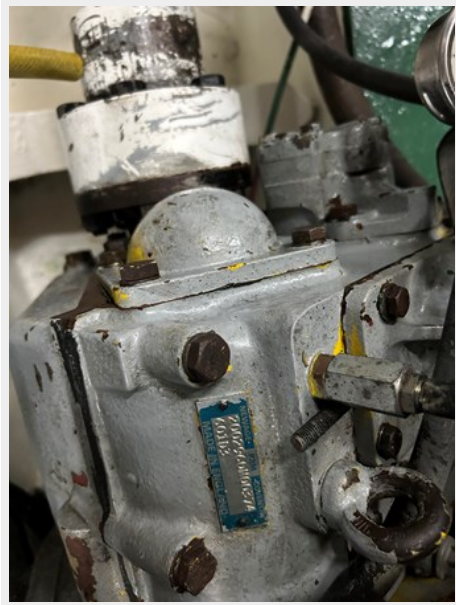
IMG\_0981



IMG\_0982



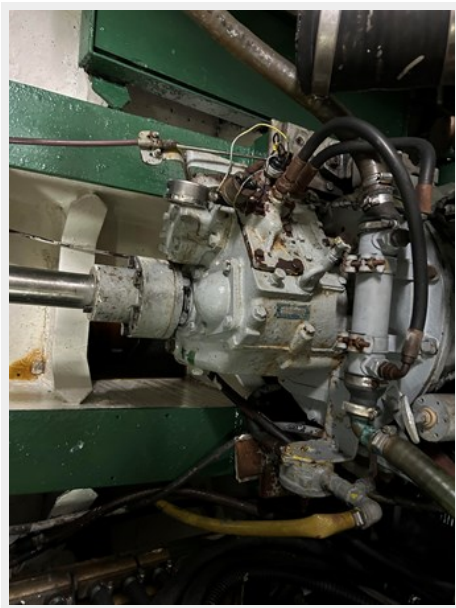
**IMG\_0983**



**IMG\_0984**



**IMG\_0985**



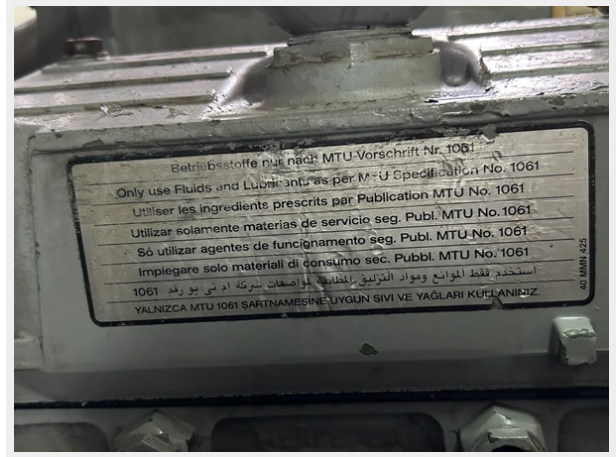
**IMG\_0986**



IMG\_0988



IMG\_0991



IMG\_0994



IMG\_0995



IMG\_0997



IMG\_0998



IMG\_0999



IMG\_1002



IMG\_0904



# CONTACTS

---

Andrey Shestakov, leading yacht broker of the sales department of Shestakov Yacht Sales Inc. Shestakov Yacht Sales Inc., the official representative of the Miami/Fort Lauderdale FL headquarters.

## Contact details

---

Email: **andrey@shestakovyachtsales.com**

Web: [shestakovyachtsales.com/en/](https://shestakovyachtsales.com/en/)

## Telephones

---

USA: **+1(954)274-4435**

## Office hours

---

Monday – Saturday: **9:00 - 21:00** EDT

Sunday: **closed**

## Address

---



Harbour Towne Marina, 850 NE 3rd St, STE 213, Dania, FL 33004