

2025 ABSOLUTE 47 FLY — ABSOLUTE



Builder: ABSOLUTE

LOA: 47' (14.33m)

Year Built: 2025

Beam: 14.83

Model: Motor Yacht

Price: PRICE ON APPLICATION

Location: United States

Our experienced yacht broker, Andrey Shestakov, will help you choose and buy a yacht that best suits your needs **2025 Absolute 47 Fly — ABSOLUTE** from our catalogue. Presently, at **Shestakov Yacht Sales Inc.**, we have a wide variety of yachts available on our sale's list. We also work in close contact with all the big yacht manufacturers from all over the world.

If you would like to buy a yacht **2025 Absolute 47 Fly — ABSOLUTE** or would like help answering any questions concerning purchasing, selling or chartering a yacht, please call **+1(954)274-4435**

TABLE OF CONTENTS

TABLE OF CONTENTS	2
SPECIFICATIONS	3
Overview	3
Basic Information	4
Dimensions	4
Speed, Capacities and Weight	4
Accommodations	4
Hull and Deck Information	4
Engine Information	4
PHOTOS	5
CONTACTS	10
Contact details	10
Telephones	10
Office hours	10
Address	10

SPECIFICATIONS

Overview

A gateway to the absolute

A unique escape from the hustle of everyday life is the ideal gateway to a new way of navigating.

The innovative 47 FLY perfectly embodies Absolute Yachts' spirit. Her comfortable wide spaces and powerful technology can take you anywhere in total safety, offering an absolute navigation experience.

The flybridge is large, well-organized, and equipped with a BBQ station. There is a generous relaxation area and a large sunpad alongside the helm station, allowing you to navigate surrounded by friends while being immersed in the panoramic view.

The bow area is an inviting sundeck that is accessible via safe side-walkways and protected by high, ergonomic handrails.

Exclusive comfort, uncompromised wide view

On the main deck you can experience maximum livability. The well-equipped galley easily joins the aft cockpit creating an open space that is cozy, beautiful and very functional.

The pillar-free windows offer a breathtaking panorama: the view from the inside is complete and the amount of light is surprising.

The salon has a double sofa with a table, a multi-media area, and designer interiors with refined details. Moreover, the air conditioning system in all rooms is ergonomic and the driving helm has a comfortable side door, a useful feature during maneuvering operations.

Innovation, comfort, and design to feel at one with the sea

The lower deck offers two double cabins, a twin cabin, and two heads. All of the guest cabins feature high ceilings and harmonious lines.

The master cabin is at the bow, raised from the floating level without steps, and with a spacious closet. A vanity desk and an en-suite head with a porthole in the shower are also present.

Finally, the refined VIP cabin has high-quality materials, beautiful finishes, a double bed accessible on three sides, a walk-in closet, and panoramic windows in two of the cabins.

Basic Information

Category: Motor Yacht

Model Year: 2025

Year Built: 2025

Country: United States

Dimensions

LOA: 47' (14.33mm)

LOD: 48' (14.6mm)

Beam: 14.83

Speed, Capacities and Weight

Water Capacity: 140 Gallons

Fuel Capacity: 422 Gal Gallons

Accommodations

Total Cabins: 3

Total Berths: 6

Sleeps: 6

Total Heads: 2

Hull and Deck Information

Hull Material: Fiberglass

Deck Material: Teak

Hull Configuration: Planing

Hull Designer: Absolute Design Team

Interior Designer: Absolute Design Team

Engine Information

Engines: 2

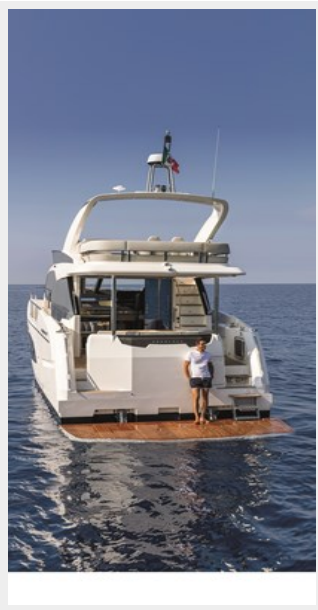
Manufacturer: Volvo Penta

Engine Type: Inboard

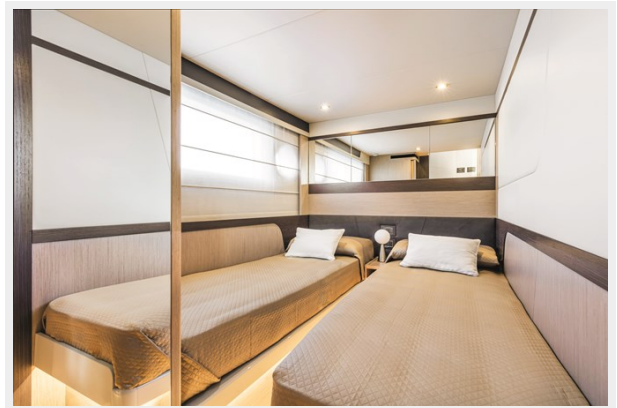
Fuel Type: Diesel

PHOTOS











CONTACTS

Andrey Shestakov, leading yacht broker of the sales department of Shestakov Yacht Sales Inc. Shestakov Yacht Sales Inc., the official representative of the Miami/Fort Lauderdale FL headquarters.

Contact details

Email: **andrey@shestakovyachtsales.com**

Web: shestakovyachtsales.com/en/

Telephones

USA: **+1(954)274-4435**

Office hours

Monday – Saturday: **9:00 - 21:00** EDT

Sunday: **closed**

Address



Harbour Towne Marina, 850 NE 3rd St, STE 213, Dania, FL 33004