

## 2025 ABSOLUTE 60 FLY — ABSOLUTE



**Судостроитель:** ABSOLUTE

**Длина общая:** 60' (18.29mm)

**Год постройки:** 2025

**Ширина:** 16.16

**Модель:** Flybridge

**Цена:** Price on Application

**Местонахождение:** United States

Купить **2025 Absolute 60 Fly — ABSOLUTE** а также выбрать подходящую вам яхту из нашего **каталога яхт** вам поможет опытный яхтенный брокер Андрей Шестаков. На сегодняшний день компания **Shestakov Yacht Sales Inc.** имеет большое количество яхт в **собственном списке продаж**, а также тесно сотрудничает со всеми крупными **яхтенными производителями** по всему миру.

Для того чтобы купить яхту **2025 Absolute 60 Fly — ABSOLUTE** а также проконсультироваться по любому вопросу связанному с покупкой, продажей, чартером яхт позвоните по телефону **+7(918)465-66-44**.

# ОГЛАВЛЕНИЕ

---

ОГЛАВЛЕНИЕ	2
ХАРАКТЕРИСТИКИ	3
Обзор	3
Основная информация	4
Размеры	4
Скорость, вместимость и масса	4
Размещение	4
Корпус и палуба	4
Информация о двигателе	5
ФОТОГРАФИИ	6
КОНТАКТЫ	11
Контактная информация	11
Телефоны	11
Время работы	11
Адрес	11

# ХАРАКТЕРИСТИКИ

---

## Обзор

---

Evolution through our eyes

Born to reveal new and endless possibilities, the *60 FLY - The Absolute Prisma* is a revolutionary model, uniquely built with a very high level of innovation for a yacht of this size.

Thanks to new glazed parapets balustrades, the external lines are enriched by elegant, transparent barriers which offer breathtaking views both from the flybridge and the aft cockpit. In a new progression of our cockpit design, it does not include fixed elements or furniture, and can be furnished according to the owner's needs. Moreover, thanks to two convenient side stairwells, the large swim platform is easily accessed for you to enjoy right at the water's edge. Adjacent to the platform, a fixed corridor offers direct access to the crew cabin.

This boat represents an incredible evolution both for our shipyard and the shipowner, offering high versatility of use and unparalleled livability in all areas, with no compromises.

A new world of possibilities

At one with the environment and highly enjoyable, the flybridge area on the upper deck serves as a second outdoor living room ideal to sunbathe, enjoy a cocktail, and navigate while socializing. The galley, dining, and relaxation zones, as well as the highly technological helm station, offer extreme livability, elegant lines, beautiful color contrasts, and lovely finishes. The bow area is also designed for maximum versatility thanks to a sunbathing zone and a comfortable sofa with a table. This is the perfect spot to listen to music, socialize, and enjoy some privacy; all in one, day and night.

State-of-the-art technology takes the form of modern and fully-equipped dashboards with easy-to-use equipment, always at hand. The helm stations on the main deck and flybridge have double seats and even a third mooring station can be installed astern. The 'green' approach of the shipyard is recognizable in the possibility of integrating solar panels in the hard top to achieve a lower environmental impact and excellent levels of autonomy, especially at anchor.

New perspectives to be discovered

The interiors are designed with comfort in mind, are elegantly furnished, and embellished with fine materials. A continuous design links the lounge, galley, and cockpit together. One has a feeling of wide and boundless spaces, enriched by modern lighting, entertainment systems, as well as ergonomic air conditioning.

Even the bow area discloses new perspectives thanks to the creation of a shipowner's quarter: a full-beam cabin. Raised and with high ceilings, it features exclusive furniture and elegant finishing touches. Its refined and quiet atmosphere enhances comfort and privacy with a large walk-in closet, sea-view vanity, and large side windows to feel surrounded by nature. The VIP cabin has all the characteristics of the master cabin: open, bright, with an en-suite head, and lots of rooms to feel just like at home.

## Основная информация

**Тип судна:** Flybridge

**Подкатегория:** Flybridge

**Модельный год:** 2025

**Год постройки:** 2025

**Страна:** United States

## Размеры

**Длина общая:** 60' (18.29mm)

**Длина палубы:** 61' 3" (18.67mm)

**Ширина:** 16.16

## Скорость, вместимость и масса

**Вместимость воды:** 192 Gallons

**Объем топливного бака:** 739 Gal  
Gallons

## Размещение

**Всего кают:** 4

**Всего ком. состава:** 4

## Корпус и палуба

**Материал корпуса:** Fiberglass

## Информация о двигателе

---

**Двигатели:** 2

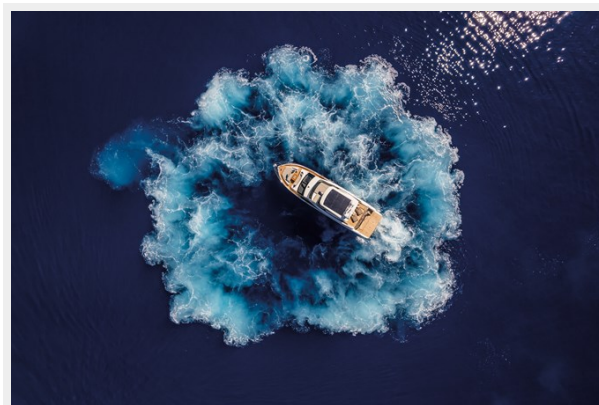
**Производитель:** Volvo Penta

**Тип двигателя:** Inboard

**Тип топлива:** Diesel

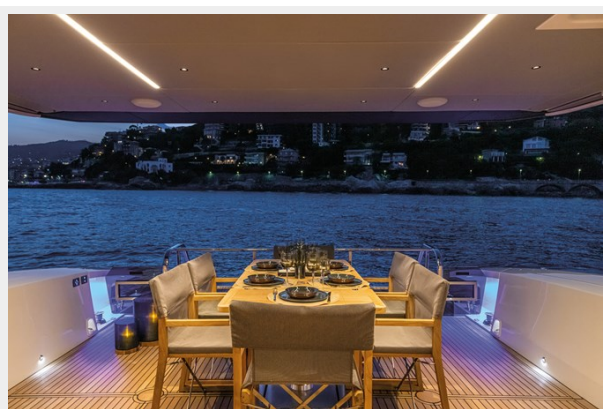
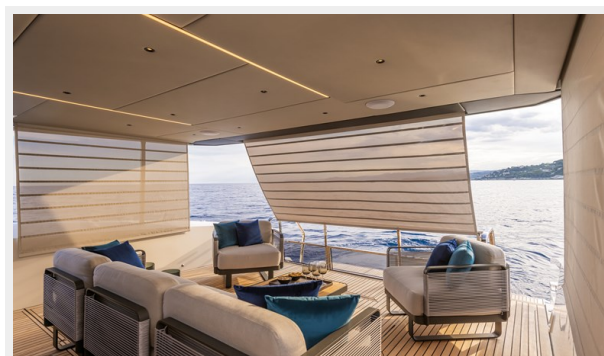


# ФОТОГРАФИИ

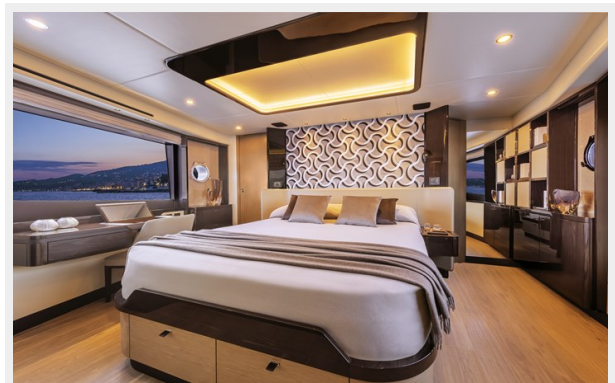


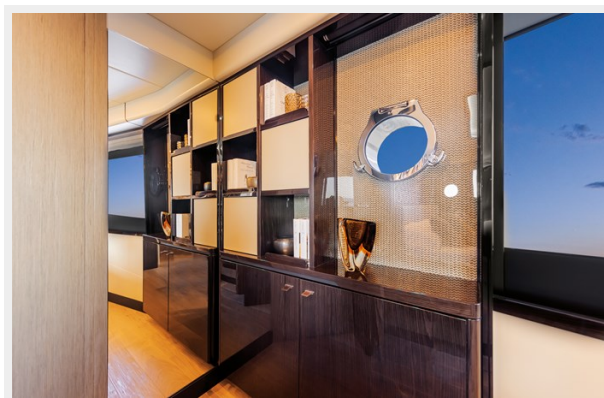












# КОНТАКТЫ

---

Андрей Шестаков (Andrey Shestakov) – ведущий яхтенный брокер отдела продаж яхт и судов компании Shestakov Yacht Sales Inc. Официальный представитель Shestakov Yacht Sales Inc. для русскоговорящих клиентов в центральном офисе компании в Майами/Форт Лодердейл/Флорида/США.

## Контактная информация

---

Email: **andrey@shestakovyachtsales.com**

Web: [shestakovyachtsales.com](http://shestakovyachtsales.com)

## Телефоны

---

Краснодарский край: **+7(918)465-66-44**

США, Майами, Флорида: **+1(954)274-4435**

## Время работы

---

Понедельник – Суббота: **9:00 - 21:00** EDT

Воскресенье: **Закрыто**

## Адрес

---



Harbour Towne Marina, 850 NE 3rd St, STE 213, Dania, FL 33004