

FIDELIO — ALL AMERICAN MARINE



Builder: ALL AMERICAN MARINE

Year Built: 1990

Model: Motor Yacht

Price: Price on Application

Location: France

LOA: 36' 11" (11.23mm)

Beam: 12.66

Min Draft: 4' (1.22mm)

Max Draft: 4' (1.22mm)

Cruise Speed: 8 Knots Kts. (9 MPH)

Max Speed: 10.5 Knots Kts. (12 MPH)

Our experienced yacht broker, Andrey Shestakov, will help you choose and buy a yacht that best suits your needs **Fidelio — ALL AMERICAN MARINE** from **our catalogue**. Presently, at **Shestakov Yacht Sales Inc.**, we have a wide variety of yachts available on **our sale's list**. We also work in close contact with all the big **yacht manufacturers** from all over the world.

If you would like to buy a yacht **Fidelio — ALL AMERICAN MARINE** or would like help answering any questions concerning purchasing, selling or chartering a yacht, please call **+1(954)274-4435**

TABLE OF CONTENTS

TABLE OF CONTENTS	2
SPECIFICATIONS	4
Overview	4
Basic Information	4
Dimensions	4
Speed, Capacities and Weight	4
Accommodations	4
Hull and Deck Information	5
Engine Information	5
PHOTOS	6
aft view during navigation	6
side view during navigation	6
side view during navigation	6
side view during navigation	6
side view during navigation	6
side view during navigation	6
bow view	7
bow view during navigation	7
extrior aft view	7
above aft view	7
sundeck dining table view	8
sundeck view	8
above aft view	8
exterior aft view	8
bow cabin view	9
entry of the cabin view	9
side of the aft cabin view	9
cockpit view	9
cockpit view	10

main suite view	10
bathroom view	10
dining sundeck view	10
aft exterior view	11
motor view	11
motor view	11
aft view in navigation	11
zoomed aft view in navigation	12
CONTACTS	13
Contact details	13
Telephones	13
Office hours	13
Address	13

SPECIFICATIONS

Overview

The Grand Banks Classic is a comfortable and classic boat. This boat have two Ford Lehman 135Hp Diesel engines, these engines have proven their worth many times through the years. The fiberglass hull of the boat is known to be very strong due to his American conception . The advantages of this boat is his polyvalence, he is adapted to families who wants to relax or to the confirmed Fishermans who want to go fishing with friends.

Basic Information

Category: Motor Yacht

Sub Category: Motor Yacht

Model Year: 1990

Year Built: 1990

Country: France

Dimensions

LOA: 36' 11" (11.23mm)

Beam: 12.66

Min Draft: 4' (1.22mm)

Max Draft: 4' (1.22mm)

Speed, Capacities and Weight

Cruise Speed: 8 Knots Kts. (9 MPH)

Max Speed: 10.5 Knots Kts. (12 MPH)

Gross Tonnage: 11.7 Pounds

Water Capacity: 582 Gallons

Fuel Capacity: 330.22 Gal Gallons

Accommodations

Total Cabins: 2

Total Berths: 4

Hull and Deck Information

Hull Material: Fiberglass

Deck Material: Teak

Hull Configuration: Monohull

Hull Color: white

Engine Information

Engines: 2

Manufacturer: Ford

Engine Type: Inboard

Fuel Type: Diesel

PHOTOS

aft view during navigation



side view during navigation



side view during navigation



side view during navigation



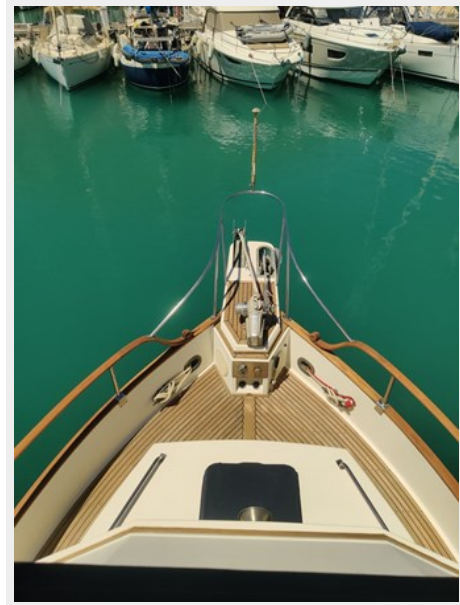
side view during navigation



bow view during navigation



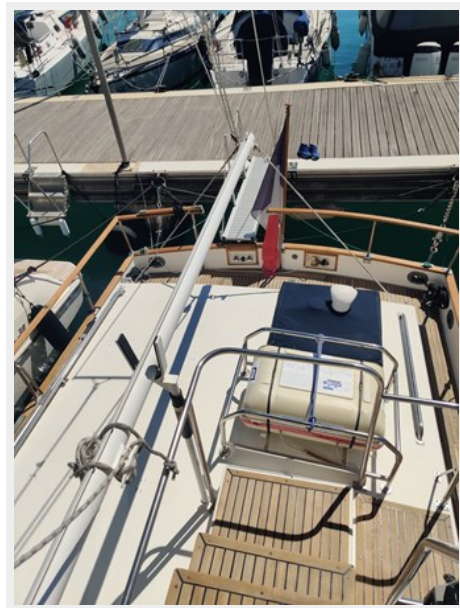
bow view



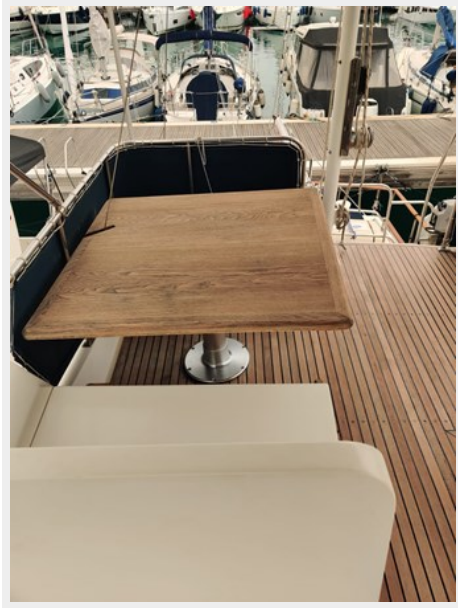
exterior aft view



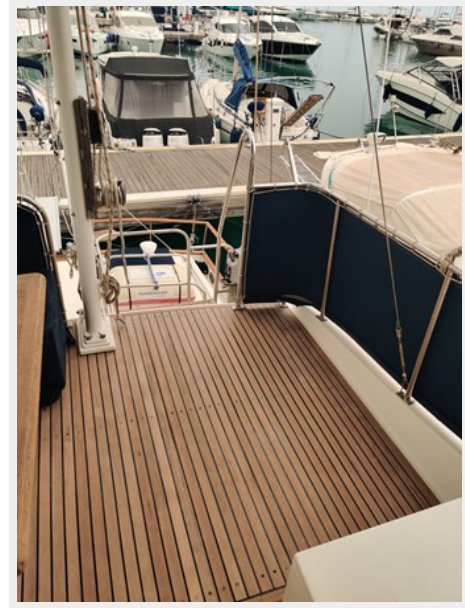
above aft view



sundeck dining table view



sundeck view



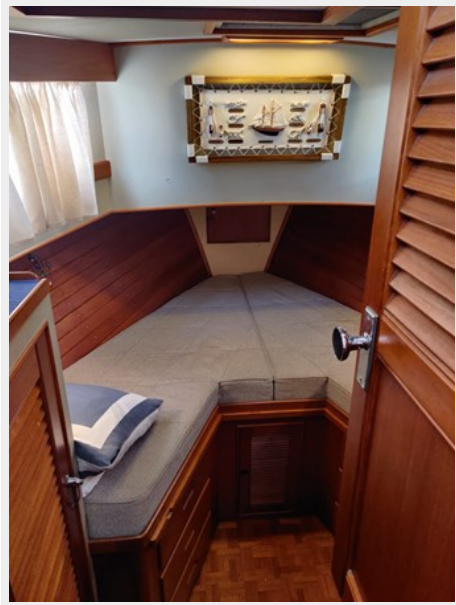
above aft view



exterior aft view



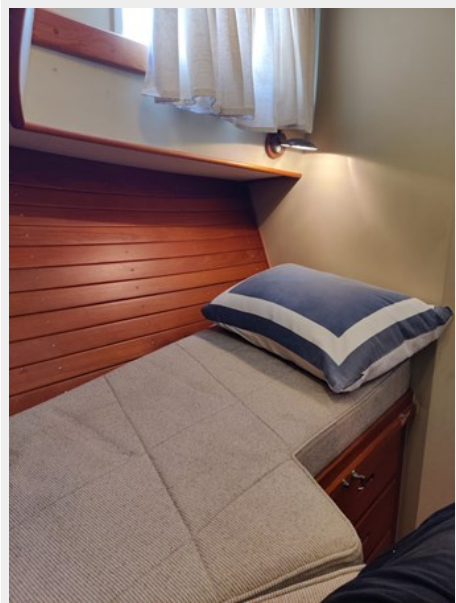
bow cabin view



entry of the cabin view



side of the aft cabin view



cockpit view



cockpit view



main suite view



bathroom view



dining sundeck view



aft exterior view



motor view



motor view



aft view in navigation



zoomed aft view in navigation



CONTACTS

Andrey Shestakov, leading yacht broker of the sales department of Shestakov Yacht Sales Inc. Shestakov Yacht Sales Inc., the official representative of the Miami/Fort Lauderdale FL headquarters.

Contact details

Email: **andrey@shestakovyachtsales.com**

Web: shestakovyachtsales.com/en/

Telephones

USA: **+1(954)274-4435**

Office hours

Monday – Saturday: **9:00 - 21:00** EDT

Sunday: **closed**

Address



Harbour Towne Marina, 850 NE 3rd St, STE 213, Dania, FL 33004