

# LEOPARD 31 OPEN — LEOPARD CATAMARANS



**Builder:** LEOPARD CATAMARANS

**Year Built:** 2008

**Model:** Motor Yacht

**Price:** €2,950,000 EUR

**Location:** Spain

**LOA:** 101' 9" (31mm)

**Beam:** 22.8

**Max Draft:** 11' 7" (3.53mm)

**Cruise Speed:** 28 Knots Kts. (32 MPH)

**Max Speed:** 36 Knots Kts. (41 MPH)

Our experienced yacht broker, Andrey Shestakov, will help you choose and buy a yacht that best suits your needs **LEOPARD 31 OPEN — LEOPARD CATAMARANS** from our catalogue. Presently, at **Shestakov Yacht Sales Inc.**, we have a wide variety of yachts available on our sale's list. We also work in close contact with all the big yacht manufacturers from all over the world.

If you would like to buy a yacht **LEOPARD 31 OPEN — LEOPARD CATAMARANS** or would like help answering any questions concerning purchasing, selling or chartering a yacht, please call **+1(954)274-4435**

# TABLE OF CONTENTS

TABLE OF CONTENTS	2
SPECIFICATIONS	4
Overview	4
Basic Information	5
Dimensions	5
Speed, Capacities and Weight	5
Accommodations	5
Hull and Deck Information	5
Engine Information	5
PHOTOS	6
Leopard31Open	6
Leopard31Open	6
Leopard31Open	6
Leopard31Open	6
Leopard31Open	6
Leopard31Open	7
Leopard31Open	7
Leopard31Open	7
Leopard31Open	7
Leopard31Open	8
Leopard31Open	8
Leopard31Open	8
Leopard31Open	8
Leopard31Open	8
Leopard31Open	8
Leopard31Open	9
Leopard31Open	9
Leopard31Open	9

---

Leopard31Open	9
Leopard31Open	10
Leopard31Open	10
Leopard31Open	10
Leopard31Open	10
Leopard31Open	10
Leopard31Open	10
Leopard31Open	11
Leopard31Open	11
Leopard31Open	11
CONTACTS	12
Contact details	12
Telephones	12
Office hours	12
Address	12

---

# SPECIFICATIONS

---

## Overview

---

Leopard 31 Open Yacht (2008) - A Masterpiece of Speed, Style, and Comfort

Step aboard this stunning Leopard 31 Open, a yacht that perfectly embodies the blend of luxury, performance, and elegance. Designed by the renowned Andrea Bacigalupo, this 2008 model is a shining example of the Leopard brand's commitment to excellence. Whether you're cruising the coast or anchored in a secluded bay, this yacht invites you to relax and enjoy the best of life on the water.

**Refined and Ready:** This Leopard 31 underwent a significant refit in 2019, bringing it up to modern standards of luxury and technology. Inside, the yacht boasts four comfortable ensuite cabins, perfectly suited for extended trips with family or friends. The interior exudes a warm, spacious atmosphere, thanks to the thoughtfully designed furniture and great layout, creating an inviting space for all occasions.

**Unmatched Performance:** Powered by three MTU engines coupled with Kamewa waterjets, this yacht offers vibration-free cruising at any desired speed. The Leopard 31 is not only fast but also exceptionally smooth, making it a rare find among superyachts. Fitted with a Seakeeper stabilizer, she guarantees a comfortable and stable experience, even at high speeds.

**Outdoor Living at Its Best:** The expansive outdoor spaces are designed for relaxation and enjoyment. Large sunbathing areas provide the perfect spot to soak up the sun, while the spacious aft cockpit, protected by a custom-made removable bimini top sunshade, offers a comfortable area to unwind with a refreshing drink or dine alfresco.

**Ideal for Entertaining:** With the capacity to accommodate up to 12 guests, this Leopard 31 is perfect for hosting family gatherings or socializing with friends. The combination of speed, style, and comfort makes this yacht an ideal choice for those seeking unforgettable cruising experiences.

**Ready for Sea Trials:** This yacht is in excellent condition and ready for her next adventure. Sea trials can be arranged with just 24 hours' notice, and viewings are highly recommended to truly appreciate the quality and performance of this exceptional vessel.

---

## Basic Information

---

**Category:** Motor Yacht

**Sub Category:** Motor Yacht

**Model Year:** 2008

**Year Built:** 2008

**Country:** Spain

---

## Dimensions

---

**LOA:** 101' 9" (31mm)

**Beam:** 22.8

**Max Draft:** 11' 7" (3.53mm)

---

## Speed, Capacities and Weight

---

**Cruise Speed:** 28 Knots Kts. (32 MPH) **Max Speed:** 36 Knots Kts. (41 MPH)

**Water Capacity:** 1400 Gallons

**Fuel Capacity:** 2245.46 Gal Gallons

---

## Accommodations

---

**Total Cabins:** 4

**Total Berths:** 8

**Sleeps:** 8

**Total Heads:** 4

---

## Hull and Deck Information

---

**Hull Material:** Fiberglass

---

## Engine Information

---

**Engines:** 3

**Manufacturer:** MTU

**Engine Type:** Inboard

**Fuel Type:** Diesel

# PHOTOS

**Leopard31Open**



**Leopard31Open**



**Leopard31Open**



**Leopard31Open**



**Leopard31Open**





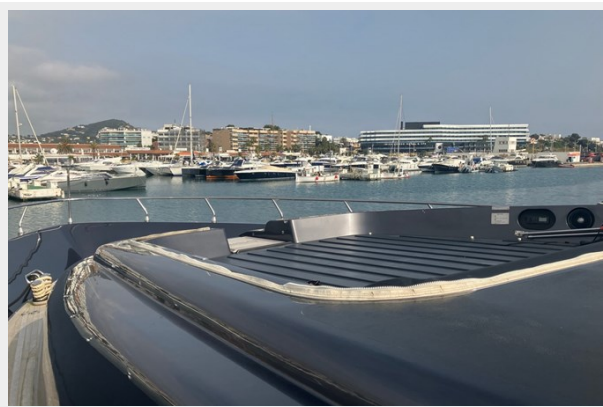
**Leopard31Open**



**Leopard31Open**



**Leopard31Open**



**Leopard31Open**



**Leopard31Open**



**Leopard31Open**



**Leopard31Open**



**Leopard31Open**



**Leopard31Open**



**Leopard31Open**





**Leopard31Open**



**Leopard31Open**



**Leopard31Open**



**Leopard31Open**



**Leopard31Open**



**Leopard31Open**



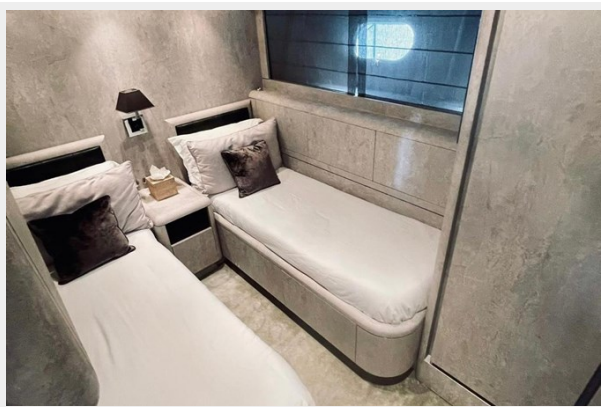
**Leopard31Open**



**Leopard31Open**



**Leopard31Open**



**Leopard31Open**





**Leopard31Open**



**Leopard31Open**



**Leopard31Open**



# CONTACTS

---

Andrey Shestakov, leading yacht broker of the sales department of Shestakov Yacht Sales Inc. Shestakov Yacht Sales Inc., the official representative of the Miami/Fort Lauderdale FL headquarters.

## Contact details

---

Email: **andrey@shestakovyachtsales.com**

Web: [shestakovyachtsales.com/en/](https://shestakovyachtsales.com/en/)

## Telephones

---

USA: **+1(954)274-4435**

## Office hours

---

Monday – Saturday: **9:00 - 21:00** EDT

Sunday: **closed**

## Address

---



Harbour Towne Marina, 850 NE 3rd St, STE 213, Dania, FL 33004