

WHISPER — NEDSHIP



Builder: NEDSHIP

Year Built: 2011

Model: Motor Yacht

Price: (\$4,306,680 USD est.)
€3,900,000 EUR

Location: Turkey

LOA: 114' 10" (35mm)

Beam: 23.95

Min Draft: 9' 11" (3mm)

Max Draft: 9' 11" (3mm)

Cruise Speed: 11 Knots Kts. (13 MPH)

Max Speed: 13.5 Knots Kts. (16 MPH)

Our experienced yacht broker, Andrey Shestakov, will help you choose and buy a yacht that best suits your needs **WHISPER — NEDSHIP** from **our catalogue**. Presently, at **Shestakov Yacht Sales Inc.**, we have a wide variety of yachts available on **our sale's list**. We also work in close contact with all the big **yacht manufacturers** from all over the world.

If you would like to buy a yacht **WHISPER — NEDSHIP** or would like help answering any questions concerning purchasing, selling or chartering a yacht, please call **+1(954)274-4435**

TABLE OF CONTENTS

TABLE OF CONTENTS	2
SPECIFICATIONS	5
Overview	5
Basic Information	5
Dimensions	5
Speed, Capacities and Weight	5
Accommodations	6
Hull and Deck Information	6
Engine Information	6
PHOTOS	7
WHISPER profile	7
Whisper Aft Main Deck	7
Whisper yacht Aft Deck connected with the Swimming Platfor	7
Whisper Aft Main Deck	7
Whisper Upper Deck	7
Whisper Upper Deck Aft Settee	7
Whisper Upper Deck Aft Dining	8
Whisper Upper Deck Aft Dining	8
Whisper yacht Sun Deck Elevator connecting main, upper and sun deck	8
Whisper yacht Sun Deck	8
Whisper yacht fore platform with jet skis	8
Whisper Lounge	8
Whisper yacht side corridor	9
Whisper yacht side corridor	9
Whisper yacht foredeck with crane for jet skis	9
Whisper Lounge Elevator view	9
Whisper Interior	10
Whisper Lounge - Mobility Chair	10

Whisper Lounge views	10
Whisper Lounge detail	10
Whisper interior	11
Whisper Lounge views	11
Whisper Main Deck Interior Dining	11
Whisper Dining Room	11
Whisper Interior Dining Area	12
Whisper Dining Room Views	12
Whisper Main Deck Pantry	12
Whisper Main Deck Head	12
Whisper yacht Wheel House	13
Whisper Wheel House	13
Whisper Galley	13
Whisper Galley	13
Whisper Galley	14
Whisper Main Deck Pantry	14
Whisper Staircase	14
Whisper Master Stateroom	14
Whisper Main Deck Master Stateroom View	15
Whisper Master Stateroom	15
Whisper Main Deck Master Stateroom Views	15
Whisper Master Stateroom Bathroom	15
Whisper Main Deck Master Bath	16
Whisper Upper Deck Bathroom	16
Whisper Master Stateroom Bathroom	16
Whisper Upper Deck Stateroom	16
Whisper Upper Deck Stateroom	17
Whisper Upper Deck Stateroom Detail	17
Whisper Upper Deck Stateroom Study	17

Whisper Upper Deck Stateroom Study	17
Whisper Stateroom Bathroom	18
Stateroom Bath	18
Whisper Lower Deck Double Cabin	18
Whisper Lower Deck Double Cabin	18
Whisper Lower Deck Starboard Twin Cabin with Pullman Berth	19
Whisper Lower Deck Port Twin Cabin	19
Whisper Lower Deck Port Twin Cabin	19
Whisper Engine Room	19
Whisper Upper Deck Captain's Cabin bath	20
Whisper Upper Deck Captain's Cabin	20
Whisper Sun deck Cockpit	20
Whisper Engine Room	20
Whisper Engine Room	21
Whisper Generator indicator	21
Whisper Engine Room Chargers & Inverters	21
Whisper Caterpillar main engines	21
Whisper Engine Room Water Maker	21
Sun Deck Elevator	21
Upper Deck Wheel House	22
Wheel House Navigational Equipment	22
Wheel House Navigational Equipment	22
CONTACTS	23
Contact details	23
Telephones	23
Office hours	23
Address	23

SPECIFICATIONS

Overview

A ground-breaking 35m yacht ideal for persons with disability and accessibility at all areas in the main deck, upper deck and sun deck. One of the few yachts of its size equipped with an array of cutting-edge amenities designed for persons with disabilities, Whisper stands in a class of her own. Elevator connecting the main deck with the upper deck and the sun deck, innovative cranes and transfer systems that allow safe access in and out of the water. Access to the Jacuzzi in total autonomy.

Basic Information

Category: Motor Yacht

Sub Category: Motor Yacht

Model Year: 2011

Year Built: 2011

Country: Turkey

Dimensions

LOA: 114' 10" (35mm)

LWL: 91' 11" (28mm)

Beam: 23.95

Min Draft: 9' 11" (3mm)

Max Draft: 9' 11" (3mm)

Speed, Capacities and Weight

Cruise Speed: 11 Knots Kts. (13 MPH) **Cruise Speed Range:** 1800

Max Speed: 13.5 Knots Kts. (16 MPH) **Gross Tonnage:** 300 Pounds

Water Capacity: 4320 Gallons

Fuel Capacity: 7396.82 Gal Gallons

Fuel Consumption: 15.85 Gal Gallons

Accommodations

Total Cabins: 5

Total Berths: 10

Sleeps: 10

Total Heads: 6

Crew Cabin: 5

Crew Berths: 5

Crew Heads: 3

Hull and Deck Information

Hull Material: GRP

Deck Material: Composite Fiberglass

Hull Configuration: Full Displacement

Hull Color: White

Hull Designer: Nedship

Exterior Designer: Nedship Shipyard

Interior Designer: Silk Line

Engine Information

Engines: 2

Manufacturer: Caterpillar

Engine Type: Inboard

Fuel Type: Diesel

PHOTOS

WHISPER profile



Whisper Aft Main Deck



Whisper Aft Main Deck



Whisper yacht Aft Deck connected with the Swimming Platfor



Whisper Upper Deck Aft Settee



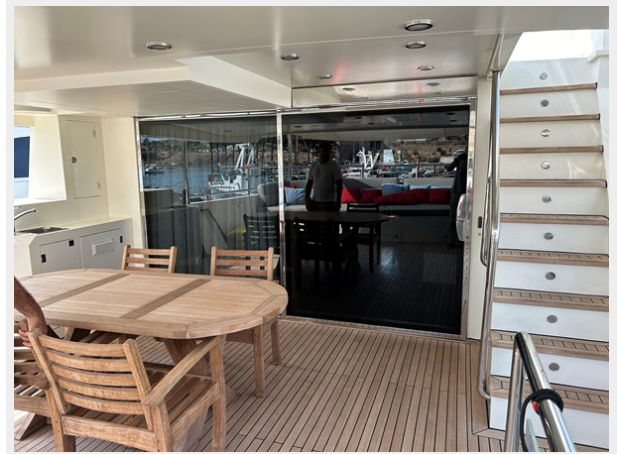
Whisper Upper Deck



Whisper Upper Deck Aft Dining



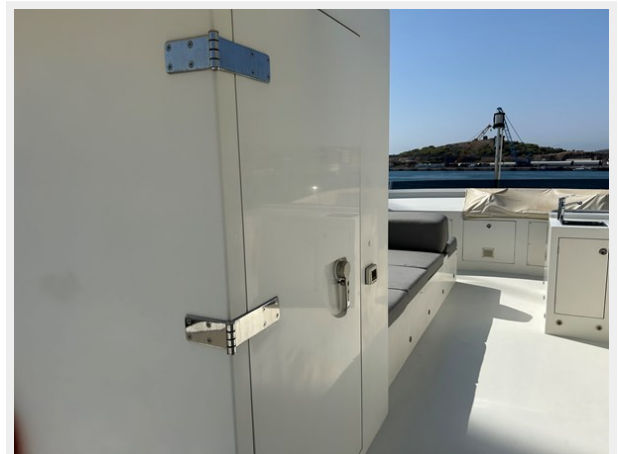
Whisper Upper Deck Aft Dining



Whisper yacht Sun Deck



Whisper yacht Sun Deck Elevator connecting main, upper and sun deck



Whisper yacht fore platform with jet skis



Whisper Lounge



Whisper yacht side corridor



Whisper yacht side corridor



Whisper yacht foredeck with crane for jet skis



Whisper Lounge Elevator view



Whisper Lounge - Mobility Chair



Whisper Interior



Whisper Lounge views

Whisper Lounge detail



Whisper interior



Whisper Lounge views



Whisper Main Deck Interior Dining



Whisper Dining Room



Whisper Interior Dining Area

Whisper Dining Room Views



Whisper Main Deck Pantry



Whisper Main Deck Head



Whisper yacht Wheel House



Whisper Wheel House



Whisper Galley



Whisper Galley



Whisper Galley



Whisper Main Deck Pantry



Whisper Staircase



Whisper Master Stateroom



Whisper Main Deck Master Stateroom View



Whisper Master Stateroom



Whisper Main Deck Master Stateroom Views



Whisper Master Stateroom Bathroom



Whisper Main Deck Master Bath

Whisper Upper Deck Bathroom



Whisper Master Stateroom Bathroom



Whisper Upper Deck Stateroom



Whisper Upper Deck Stateroom



Whisper Upper Deck Stateroom Detail



Whisper Upper Deck Stateroom Study



Whisper Upper Deck Stateroom Study



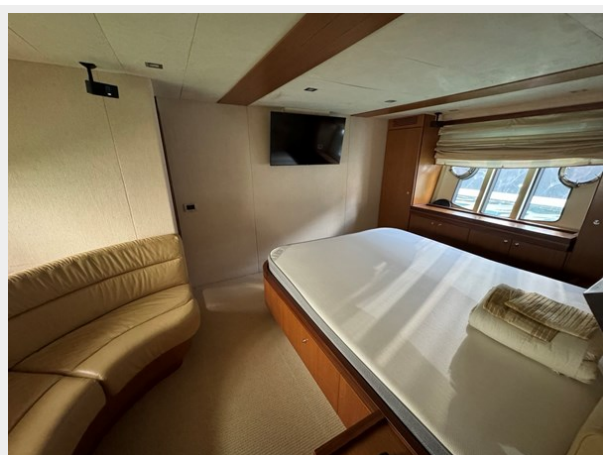
Whisper Stateroom Bathroom



Stateroom Bath



Whisper Lower Deck Double Cabin



Whisper Lower Deck Double Cabin



Whisper Lower Deck Starboard Twin Cabin with Pullman Berth



Whisper Lower Deck Port Twin Cabin



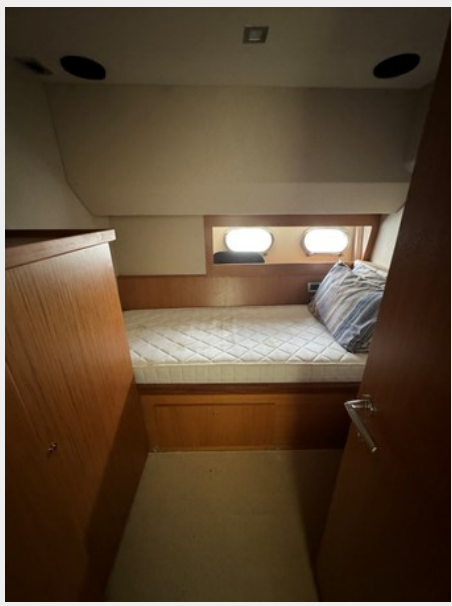
Whisper Lower Deck Port Twin Cabin



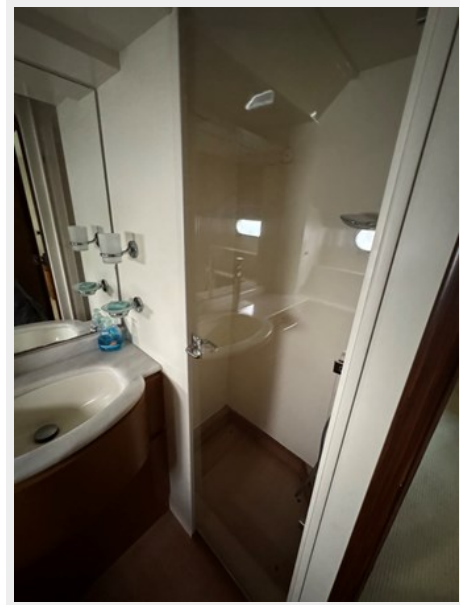
Whisper Engine Room



Whisper Upper Deck Captain's Cabin



Whisper Upper Deck Captain's Cabin bath



Whisper Sun deck Cockpit



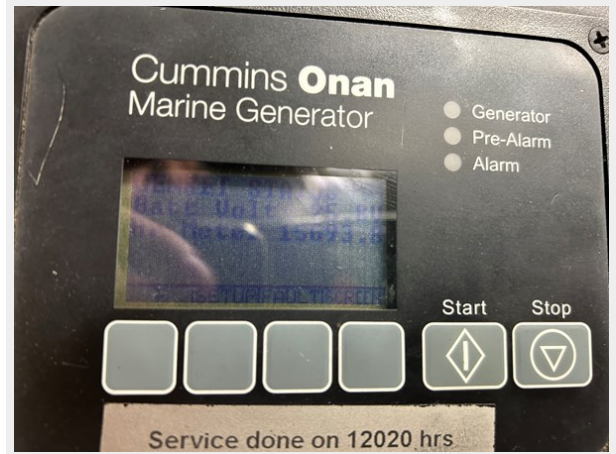
Whisper Engine Room



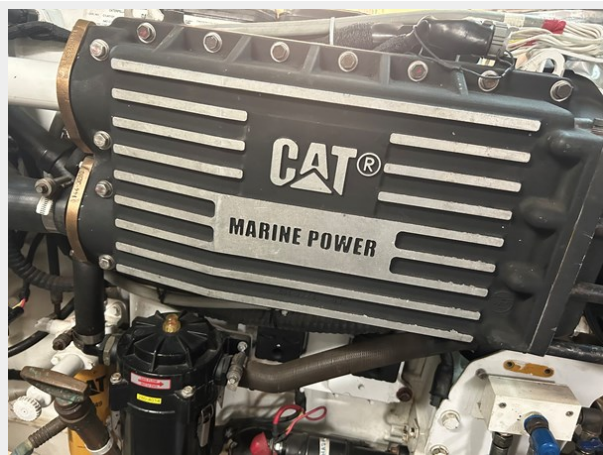
Whisper Engine Room



Whisper Generator indicator



Whisper Caterpillar main engines



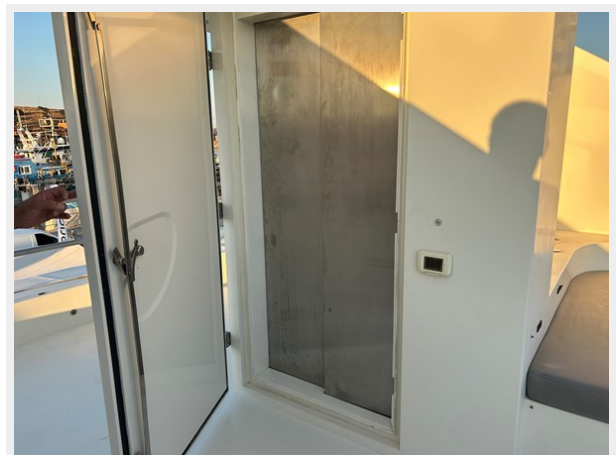
Whisper Engine Room Chargers & Inverters



Whisper Engine Room Water Maker



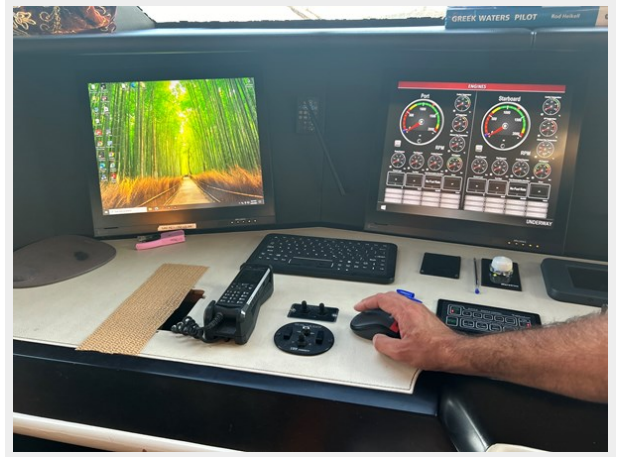
Sun Deck Elevator



Upper Deck Wheel House



Wheel House Navigational Equipment



Wheel House Navigational Equipment



CONTACTS

Andrey Shestakov, leading yacht broker of the sales department of Shestakov Yacht Sales Inc. Shestakov Yacht Sales Inc., the official representative of the Miami/Fort Lauderdale FL headquarters.

Contact details

Email: **andrey@shestakovyachtsales.com**

Web: shestakovyachtsales.com/en/

Telephones

USA: **+1(954)274-4435**

Office hours

Monday – Saturday: **9:00 - 21:00** EDT

Sunday: **closed**

Address



Harbour Towne Marina, 850 NE 3rd St, STE 213, Dania, FL 33004