

2025 ASBOLUTE NAVETTA 48 — ABSOLUTE



Builder: ABSOLUTE

Year Built: 2025

Model: Flybridge

Price: Price on Application

Location: United States

LOA: 48' (14.63mm)

Max Draft: 4' 1" (1.25mm)

Cruise Speed: 21 Knots Kts. (24 MPH)

Max Speed: 26 Knots Kts. (30 MPH)

Our experienced yacht broker, Andrey Shestakov, will help you choose and buy a yacht that best suits your needs **2025 Asbsolute Navetta 48 — ABSOLUTE** from our catalogue. Presently, at **Shestakov Yacht Sales Inc.**, we have a wide variety of yachts available on our sale's list. We also work in close contact with all the big yacht manufacturers from all over the world.

If you would like to buy a yacht **2025 Asbsolute Navetta 48 — ABSOLUTE** or would like help answering any questions concerning purchasing, selling or chartering a yacht, please call **+1(954)274-4435**

TABLE OF CONTENTS

TABLE OF CONTENTS	2
SPECIFICATIONS	3
Overview	3
Basic Information	4
Dimensions	4
Speed, Capacities and Weight	4
Accommodations	4
Hull and Deck Information	5
Engine Information	5
PHOTOS	6
CONTACTS	10
Contact details	10
Telephones	10
Office hours	10
Address	10

SPECIFICATIONS

Overview

Space and light

Space and light merge into a single concept: the real protagonist aboard the Navetta 48. With this yacht, Absolute has captured the essence of the Navetta line. This comfortable boat is perfect for long journeys: she has ample storage spaces, such as large closets, and an aft crew cabin with a private head that is accessible from the stern platform.

The outdoor space is unparalleled compared to similar boats in this segment. It offers a very high level of livability and comfort throughout the exterior accommodations.

The flybridge has no steps front to aft while the dashboard, centrally and ergonomically placed, allows for the presence of a sun lounger that can accommodate up to five people. Aft on the bridge is a spacious living area with a U-shaped sofa, a teak dining table, and a galley equipped with a refrigerator, an ice maker, a barbecue, and a sink. All of these amenities make the terrace the perfect spot to enjoy the most beautiful hours of the day.

Moreover, the bow is easily accessible via walkways, protected by the cover of the fly itself, and offers a comfortable, modular relaxation area.

Comfort and elegance

The main deck is very versatile. As soon as you enter the salon, the refined color combinations, high-quality furniture, and precious materials give the entire space a touch of class.

Close to the entrance, the galley is roomy, fully-equipped, and designed to be easily connected to the cockpit: a spacious room with a large table, ideal for outdoor lunches and dinners.

The salon continues with two elegant sofas and a starboard helm station where a side door allows you to exit directly on the walkway. Thanks to a windshield without central pillars, visibility is exceptional even when sitting.

Endless views

The lower deck has three cabins, two heads, and four sliding doors that maximize livability. All cabins have ample windows for unparalleled, panoramic views.

The master cabin is raised and placed transversely to the bow. This main suite represents the result of meticulous and unbiased engineering, covering a remarkable

surface for yachts of this size. Its large double bed has plenty of room at the sides and the ceilings are considerably high. The furniture includes a large closet, as well as a vanity area, with a seat and a desk. Additionally, the head is en-suite and has a separate full shower.

The half-beam VIP cabin has all of the same features as the master one, but is placed aft.

The third guest double cabin has separate berths, while the fourth cabin, placed aft, can accommodate an extra guest or crew.

Basic Information

Category: Flybridge

Sub Category: Flybridge

Model Year: 2025

Year Built: 2025

Country: United States

Dimensions

LOA: 48' (14.63mm)

LOD: 49' (14.91mm)

Max Draft: 4' 1" (1.25mm)

Speed, Capacities and Weight

Cruise Speed: 21 Knots Kts. (24 MPH) **Max Speed:** 26 Knots Kts. (30 MPH)

Water Capacity: 140 Gallons

Fuel Capacity: 475 Gal Gallons

Accommodations

Total Cabins: 3

Hull and Deck Information

Hull Material: Fiberglass

Engine Information

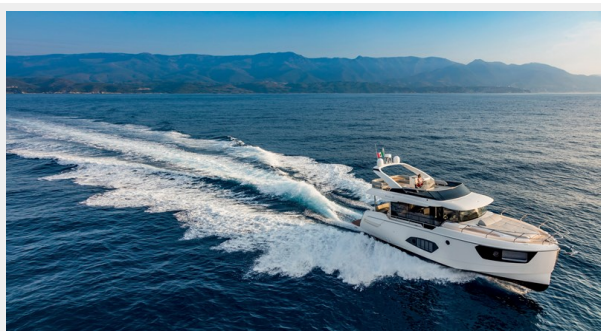
Engines: 2

Manufacturer: Volvo Penta

Engine Type: Inboard

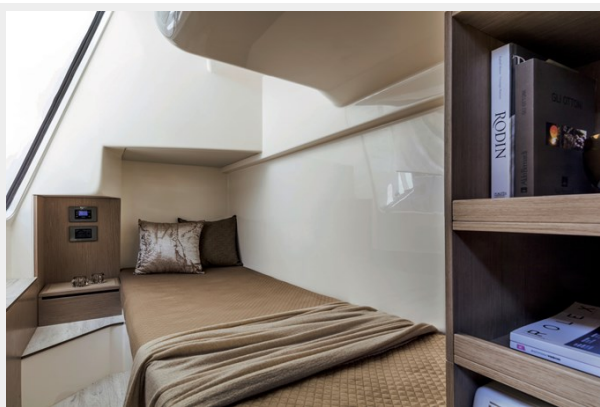
Fuel Type: Diesel

PHOTOS









CONTACTS

Andrey Shestakov, leading yacht broker of the sales department of Shestakov Yacht Sales Inc. Shestakov Yacht Sales Inc., the official representative of the Miami/Fort Lauderdale FL headquarters.

Contact details

Email: **andrey@shestakovyachtsales.com**

Web: shestakovyachtsales.com/en/

Telephones

USA: **+1(954)274-4435**

Office hours

Monday – Saturday: **9:00 - 21:00** EDT

Sunday: **closed**

Address



Harbour Towne Marina, 850 NE 3rd St, STE 213, Dania, FL 33004