

AHI MAHI — PARKER MARINE



Builder: PARKER MARINE

Year Built: 2006

Model: walkaround

Price: \$98,000 USD

Location: United States

LOA: 35' 9" (10.9mm)

Beam: 9.5

Min Draft: 1' 6" (0.46mm)

Max Draft: 1' 6" (0.46mm)

Cruise Speed: 21.72 Knots Kts. (25 MPH)

Max Speed: 43.45 Knots Kts. (50 MPH)

Our experienced yacht broker, Andrey Shestakov, will help you choose and buy a yacht that best suits your needs **AHI MAHI — PARKER MARINE** from **our catalogue**. Presently, at **Shestakov Yacht Sales Inc.**, we have a wide variety of yachts available on **our sale's list**. We also work in close contact with all the big **yacht manufacturers** from all over the world.

If you would like to buy a yacht **AHI MAHI — PARKER MARINE** or would like help answering any questions concerning purchasing, selling or chartering a yacht, please call **+1(954)274-4435**

TABLE OF CONTENTS

TABLE OF CONTENTS	2
SPECIFICATIONS	5
Overview	5
Basic Information	5
Dimensions	5
Speed, Capacities and Weight	5
Accommodations	5
Hull and Deck Information	6
Engine Information	6
PHOTOS	7
IMG_7379	7
IMG_7380	7
IMG_7381	7
IMG_7382	7
IMG_7383	7
IMG_7384	7
IMG_7385	8
IMG_7386	8
IMG_7387	8
IMG_7388	8
IMG_7389	8
IMG_7390	8
IMG_7391	9
IMG_7392	9
IMG_7393	9
IMG_7394	9
IMG_7395	9
IMG_7396	9

IMG_7397	10
IMG_7398	10
IMG_7399	10
IMG_7400	10
IMG_7401	10
IMG_7402	10
IMG_7403	11
IMG_7404	11
IMG_7405	11
IMG_7406	11
IMG_7407	11
IMG_7408	11
IMG_7409	12
IMG_7410	12
IMG_7411	12
IMG_7412	12
IMG_7413	12
IMG_7414	12
IMG_7415	13
IMG_7416	13
IMG_7417	13
IMG_7418	13
IMG_7419	13
IMG_7420	13
IMG_7421	14
IMG_7422	14
IMG_7423	14
IMG_7424	14
IMG_7425	14

IMG_7426	14
IMG_7428	15
IMG_7427	15
IMG_7429	15
IMG_7430	15
IMG_7431	16
IMG_7432	16
IMG_7433	16
IMG_7434	16
IMG_7435	16
CONTACTS	17
Contact details	17
Telephones	17
Office hours	17
Address	17

SPECIFICATIONS

Overview

Parker 2820 Pilot House, Loaded with Extras like Second Station, Bow Thruster, Rear Stainless Bimini, Electronics, Major Service Just Preformed

Yamaha 225 F-STROKES

Basic Information

Category: walkaround

Sub Category: Walk-around

Model Year: 2006

Year Built: 2006

Country: United States

Dimensions

LOA: 35' 9" (10.9mm)

Beam: 9.5

Min Draft: 1' 6" (0.46mm)

Max Draft: 1' 6" (0.46mm)

Speed, Capacities and Weight

Cruise Speed: 21.72 Knots Kts. (25 MPH)

Max Speed: 43.45 Knots Kts. (50 MPH)

Water Capacity: 10 Gallons

Holding Tank: 5 Gal Gallons

Fuel Capacity: 230 Gal Gallons

Accommodations

Total Cabins: 1

Total Berths: 1

Hull and Deck Information

Hull Material: Fiberglass Over Wood

Deck Material: Fiberglass over Wood

Hull Configuration: Deep Vee

Hull Color: Tan

Hull Designer: Linwood Parker

Engine Information

Engines: 2

Manufacturer: Yamaha

Engine Type: Outboard

Fuel Type: Gas

PHOTOS

IMG_7379



IMG_7380



IMG_7381



IMG_7382



IMG_7383



IMG_7384



IMG_7385



IMG_7386



IMG_7387



IMG_7388



IMG_7389



IMG_7390



IMG_7391



IMG_7392



IMG_7393



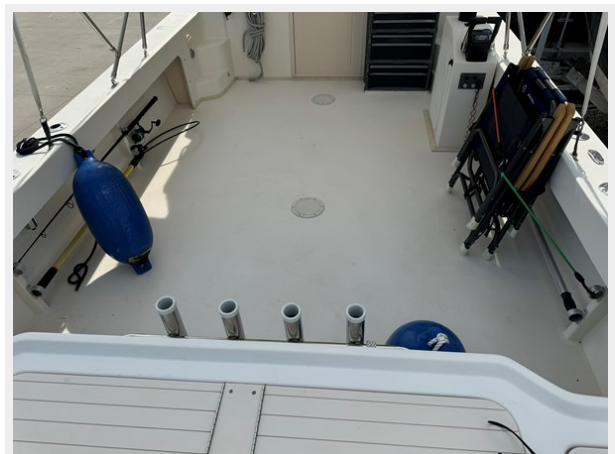
IMG_7394



IMG_7395



IMG_7396



IMG_7397



IMG_7398



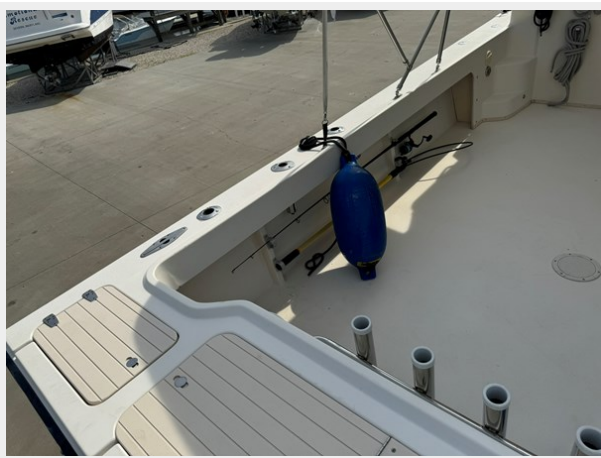
IMG_7399



IMG_7400



IMG_7401



IMG_7402



IMG_7403



IMG_7404



IMG_7405



IMG_7406



IMG_7407



IMG_7408



IMG_7409



IMG_7410



IMG_7411



IMG_7412



IMG_7413



IMG_7414



IMG_7415



IMG_7416



IMG_7417



IMG_7418



IMG_7419



IMG_7420



IMG_7421



IMG_7422



IMG_7423



IMG_7424



IMG_7425



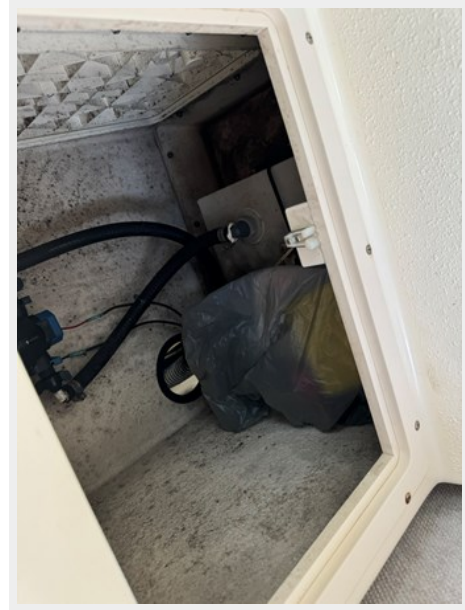
IMG_7426



IMG_7427



IMG_7428



IMG_7429



IMG_7430



IMG_7431



IMG_7432



IMG_7433



IMG_7434



IMG_7435



CONTACTS

Andrey Shestakov, leading yacht broker of the sales department of Shestakov Yacht Sales Inc. Shestakov Yacht Sales Inc., the official representative of the Miami/Fort Lauderdale FL headquarters.

Contact details

Email: **andrey@shestakovyachtsales.com**

Web: shestakovyachtsales.com/en/

Telephones

USA: **+1(954)274-4435**

Office hours

Monday – Saturday: **9:00 - 21:00** EDT

Sunday: **closed**

Address



Harbour Towne Marina, 850 NE 3rd St, STE 213, Dania, FL 33004