

SERENE — SANLORENZO



Builder: SANLORENZO

Year Built: 2023

Model: Motor Yacht

Price: \$6,750,000 USD

Location: United States

LOA: 87' 8" (26.7mm)

Beam: 23.65

Max Draft: 5' 7" (1.7mm)

Cruise Speed: 20 Knots Kts. (23 MPH)

Max Speed: 23 Knots Kts. (26 MPH)

Our experienced yacht broker, Andrey Shestakov, will help you choose and buy a yacht that best suits your needs **SERENE — SANLORENZO** from **our catalogue**. Presently, at **Shestakov Yacht Sales Inc.**, we have a wide variety of yachts available on **our sale's list**. We also work in close contact with all the big **yacht manufacturers** from all over the world.

If you would like to buy a yacht **SERENE — SANLORENZO** or would like help answering any questions concerning purchasing, selling or chartering a yacht, please call **+1(954)274-4435**

TABLE OF CONTENTS

| | |
|------------------------------|----|
| TABLE OF CONTENTS | 2 |
| SPECIFICATIONS | 3 |
| Overview | 3 |
| Basic Information | 3 |
| Dimensions | 3 |
| Speed, Capacities and Weight | 3 |
| Accommodations | 4 |
| Hull and Deck Information | 4 |
| Engine Information | 4 |
| PHOTOS | 5 |
| CONTACTS | 12 |
| Contact details | 12 |
| Telephones | 12 |
| Office hours | 12 |
| Address | 12 |

SPECIFICATIONS

Overview

SERENE is a beautiful example of Sanlorenzo's highly successful SX88 model. The open galley plan chosen by this experienced owner creates a dramatic effect for the viewer while on board, essentially surrounding them with light and glass while anywhere on the main deck's interior. The boundless exterior spaces communicate seamlessly with these indoor areas. A large dining and lounging area forward is just steps from the country kitchen, and the two-tier aft deck becomes one with the salon when its dividing glass wall is stowed. The flybridge packs a punch with a full bar and cooking top, folding dining table, sofas, and sun lounging areas. Electric side windows and louvered ceiling create an open, airy effect when open and a secure, climate-controlled space when closed.

Basic Information

Category: Motor Yacht

Model Year: 2023

Year Built: 2023

Country: United States

Dimensions

LOA: 87' 8" (26.7mm)

LWL: 77' (23.45mm)

LOD: 78' 8" (23.97mm)

Beam: 23.65

Max Draft: 5' 7" (1.7mm)

Speed, Capacities and Weight

Cruise Speed: 20 Knots Kts. (23 MPH) **Max Speed:** 23 Knots Kts. (26 MPH)

Gross Tonnage: 116 Pounds

Water Capacity: 2000 Gallons

Fuel Capacity: 2456.8 Gal Gallons

Accommodations

Total Cabins: 4

Sleeps: 8

Crew Cabin: 3

Hull and Deck Information

Hull Material: GRP

Deck Material: Teak

Hull Designer: Sanlorenzo

Exterior Designer: Officina Italiana
Design

Interior Designer: Marty Lowe

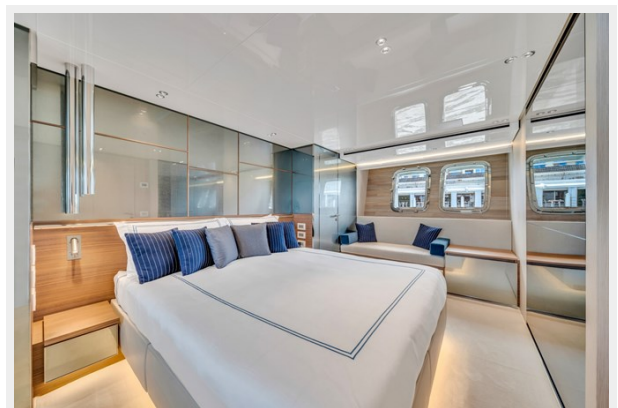
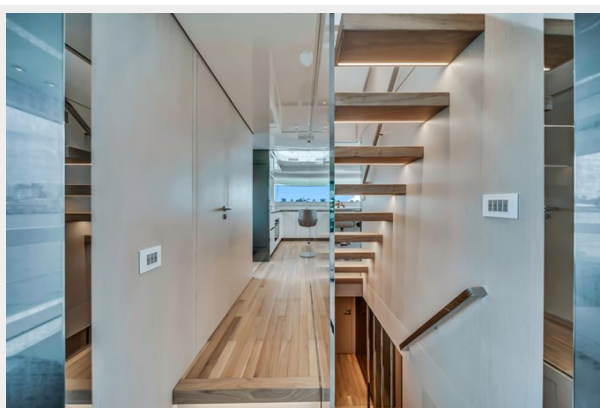
Engine Information

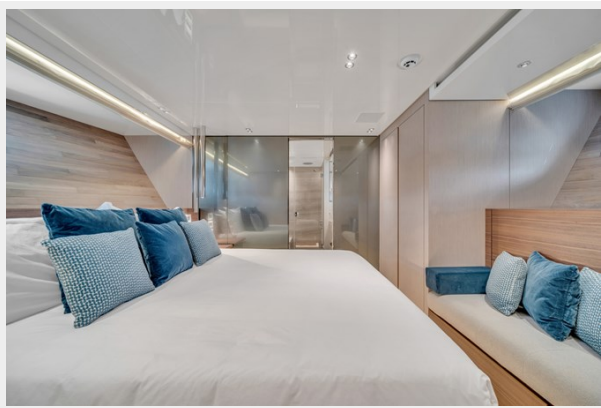
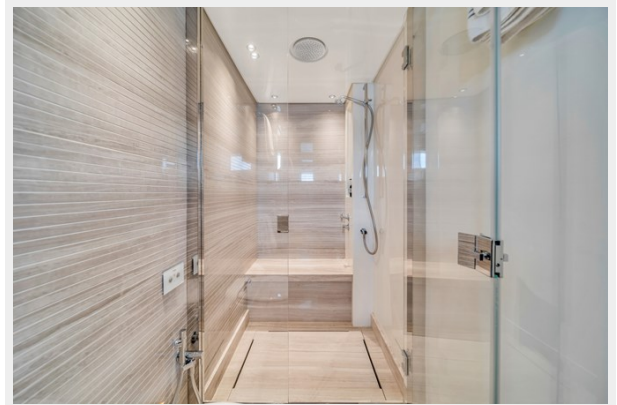
Engines: 3

Manufacturer: Volvo Penta

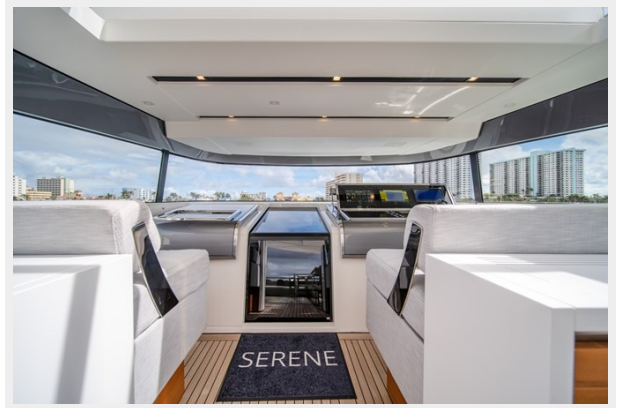
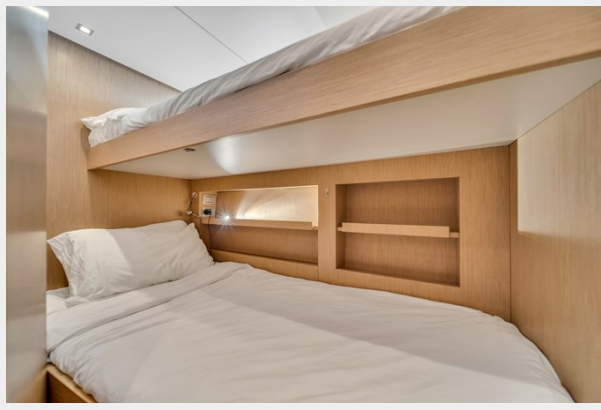
Fuel Type: Diesel

PHOTOS



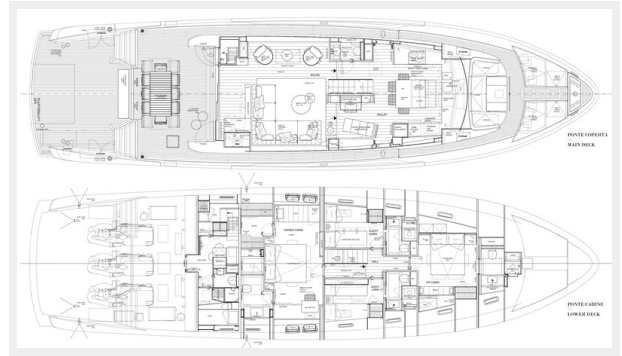












CONTACTS

Andrey Shestakov, leading yacht broker of the sales department of Shestakov Yacht Sales Inc. Shestakov Yacht Sales Inc., the official representative of the Miami/Fort Lauderdale FL headquarters.

Contact details

Email: **andrey@shestakovyachtsales.com**

Web: shestakovyachtsales.com/en/

Telephones

USA: **+1(954)274-4435**

Office hours

Monday – Saturday: **9:00 - 21:00** EDT

Sunday: **closed**

Address



Harbour Towne Marina, 850 NE 3rd St, STE 213, Dania, FL 33004