

EMPIRE SEA — CRYSTAL YACHT



Builder: CRYSTAL YACHT

Year Built: 2009

Model: Enclosed Bridge

Price: \$2,900,000 USD

Location: United States

LOA: 117' (35.66mm)

Beam: 28.5

Max Draft: 7' 6" (2.29mm)

Cruise Speed: 12 Knots Kts. (14 MPH)

Max Speed: 14 Knots Kts. (16 MPH)

Our experienced yacht broker, Andrey Shestakov, will help you choose and buy a yacht that best suits your needs **EMPIRE SEA — CRYSTAL YACHT** from **our catalogue**. Presently, at **Shestakov Yacht Sales Inc.**, we have a wide variety of yachts available on **our sale's list**. We also work in close contact with all the big **yacht manufacturers** from all over the world.

If you would like to buy a yacht **EMPIRE SEA — CRYSTAL YACHT** or would like help answering any questions concerning purchasing, selling or chartering a yacht, please call **+1(954)274-4435**

TABLE OF CONTENTS

TABLE OF CONTENTS	2
SPECIFICATIONS	3
Overview	3
Basic Information	3
Dimensions	3
Speed, Capacities and Weight	4
Accommodations	4
Hull and Deck Information	4
Engine Information	4
PHOTOS	5
CONTACTS	11
Contact details	11
Telephones	11
Office hours	11
Address	11

SPECIFICATIONS

Overview

EMPIRE SEA has been meticulously maintained by the same captain for the past 8 years with essentially no budgetary constraints. Recently, the yacht made a journey from Southern California through the Panama Canal, before heading to Florida for sale due to personal reasons. Over the past 8 years, the yacht has undergone annual shipyard maintenance, and the machinery has seen light use, with just under 6,000 hours on her Caterpillar main engines.

KEY FEATURES:

- Designed for long-range cruising
- Expansive, open deck spaces
- Equipped for fishing
- High capacity for tender storage
- Powerful main engines capable of towing a large tender
- Excellent ownership history: eight years with the current owner, seven years with the previous
- Low crew requirements for easy management
- Large portholes below the main deck for ample natural light
- Exclusively used for private purposes
- Strong potential for chartering
- US-built for straightforward registration and ope

Basic Information

Category: Enclosed Bridge

Sub Category: Enclosed Bridge

Model Year: 2009

Year Built: 2009

Country: United States

Dimensions

LOA: 117' (35.66mm)

Beam: 28.5

Max Draft: 7' 6" (2.29mm)

Speed, Capacities and Weight

Cruise Speed: 12 Knots Kts. (14 MPH) **Cruise Speed Range:** 2750

Max Speed: 14 Knots Kts. (16 MPH) **Max Speed Range:** 2000 Kts.

Gross Tonnage: 209 Pounds **Water Capacity:** 1278 Gallons

Fuel Capacity: 13366 Gal Gallons

Accommodations

Total Cabins: 4

Sleeps: 8

Crew Cabin: 7

Hull and Deck Information

Hull Material: Steel

Engine Information

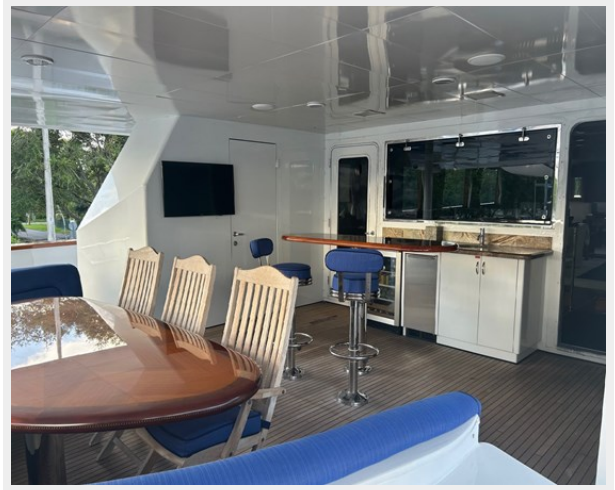
Engines: 2

Manufacturer: Caterpillar

Engine Type: Inboard

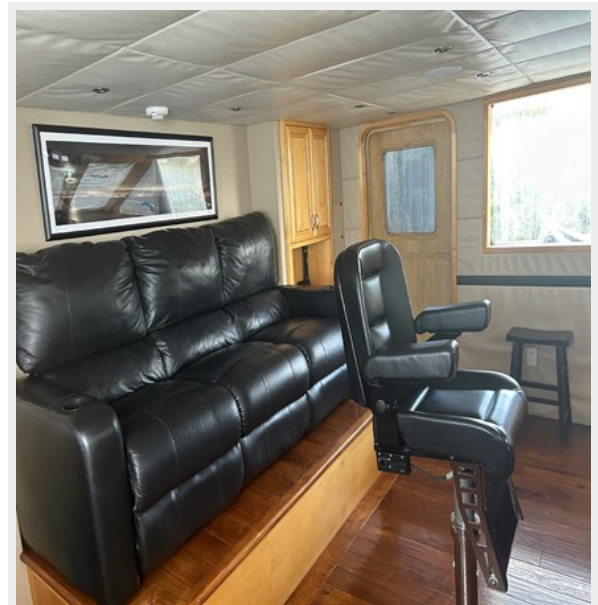
Fuel Type: Diesel

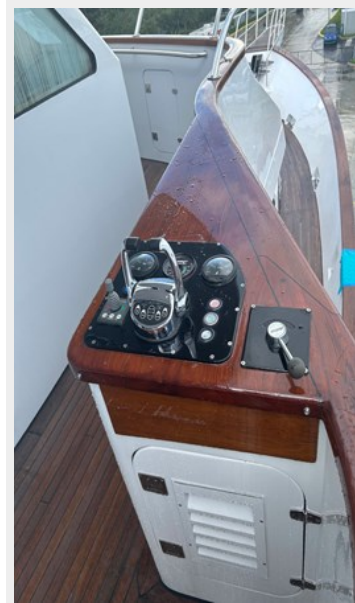
PHOTOS

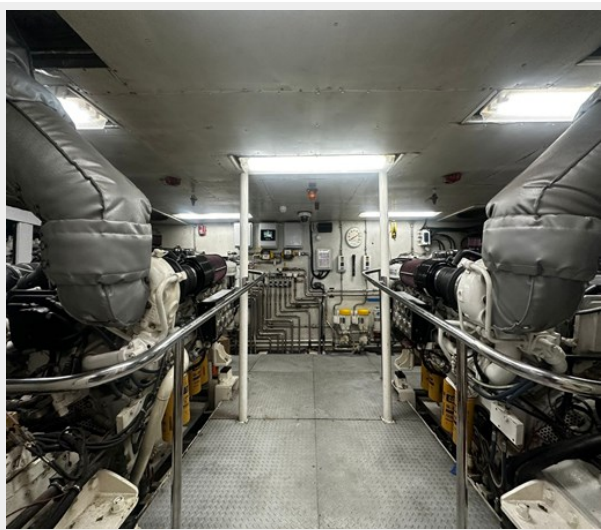












CONTACTS

Andrey Shestakov, leading yacht broker of the sales department of Shestakov Yacht Sales Inc. Shestakov Yacht Sales Inc., the official representative of the Miami/Fort Lauderdale FL headquarters.

Contact details

Email: **andrey@shestakovyachtsales.com**

Web: shestakovyachtsales.com/en/

Telephones

USA: **+1(954)274-4435**

Office hours

Monday – Saturday: **9:00 - 21:00** EDT

Sunday: **closed**

Address



Harbour Towne Marina, 850 NE 3rd St, STE 213, Dania, FL 33004