

2025 ABSOLUTE NAVERTTA 68 — ABSOLUTE



Builder: ABSOLUTE

LOA: 68' (20.73mm)

Year Built: 2025

Max Draft: 5' 9" (1.73mm)

Model: Flybridge

Price: Price on Application

Location: United States

Our experienced yacht broker, Andrey Shestakov, will help you choose and buy a yacht that best suits your needs **2025 Absolute Navertta 68 — ABSOLUTE** from our catalogue. Presently, at **Shestakov Yacht Sales Inc.**, we have a wide variety of yachts available on our sale's list. We also work in close contact with all the big yacht manufacturers from all over the world.

If you would like to buy a yacht **2025 Absolute Navertta 68 — ABSOLUTE** or would like help answering any questions concerning purchasing, selling or chartering a yacht, please call **+1(954)274-4435**

TABLE OF CONTENTS

TABLE OF CONTENTS	2
SPECIFICATIONS	3
Overview	3
Basic Information	4
Dimensions	4
Speed, Capacities and Weight	5
Accommodations	5
Hull and Deck Information	5
Engine Information	5
PHOTOS	6
CONTACTS	12
Contact details	12
Telephones	12
Office hours	12
Address	12

SPECIFICATIONS

Overview

A vision among the waves

Sinuuous, elegant and refined: the Navetta 68, “The Absolute Vision”, is one of a kind sea creature able to capture the eyes of the most demanding and passionate navigators on the planet who let themselves be embraced by the most intense emotions.

An absolute comfort reigns in indoor and outdoor spaces dedicated to the conviviality, in a framework of precious and elegant materials, according to the unique Made in Italy style.

The flybridge space is equipped with a hard top whose dimensions are similar to the ones of the mega yachts, that can cover the entire dining and piloting area.

On the lower deck there are four large cabins: the master cabin raised above the floating level, the VIP cabin and two cabins with single beds (one of which is equipped with an electric mechanism that allows you to join or divide the beds according to the needs), as well as two separate cabins for the crew.

Versatility and functionality are further enhanced by the presence of 6 sliding doors and a large storage compartment.

The main deck is characterized by brightness, elegance and flexibility of use. Just think of the entrance door to the salon with an electric sliding window or an electric sliding glass that gives better privacy to the kitchen and living room.

Even the raised driving helm has a dividing wall with electric high and down mechanism and has been designed to offer the maximum comfort and the best visibility.

Nothing is left to chance in the Navetta 68, not even the engine room impeccably organized in order to allow easy operation and maintenance of the components.

Thanks to Absolute all this is no longer just a vision, but a real living experience aboard the Navetta 68.

Space turns into emotion

All the external areas are spacious and pleasant, as well as easily accessed promoting total safety. The bow deck—set up with a sofa, an extendable table, and a sun lounger—can be reached via wide walkways that are protected, covered, and lit.

The flybridge terrace is spacious: it offers a large relaxation area, an outdoor galley with a dining table, and a helm station with side sofas. You are free to navigate in the

company of your guests, while keeping everything under control.

The aft cockpit is designed to enhance the social side of the boat. It connects easily to the galley thanks to the opening windows and the vanishing electric glass in the shared cabinet. What could be the result? A large open space, surrounded by water, ready for your enjoyment.

Comfort and elegance

The main deck has been designed with comfort in mind and offers a 360-degree panorama.

Here, you can enjoy a well-equipped galley, a living room, the salon, and the entertainment area which together offer great livability, making you feel right at home.

Thanks to creative design of the structure, which allows for four generously-sized cabins and six sliding doors, the spaces below deck are more than what you would expect from a 68-foot boat.

The master suite is located at the bow for exclusive privacy. Inside, you will find a large double bed, comfortable wardrobes for storing your luggage, and a vanity area. On both sides, two panoramic windows stretch the full beam, the en-suite head has a double sink and a large shower made with the best materials.

The other guest cabins are designed with the same care, allowing you to enjoy your vacation at its very best, truly at home at sea.

Basic Information

Category: Flybridge

Sub Category: Flybridge

Model Year: 2025

Year Built: 2025

Country: United States

Dimensions

LOA: 68' (20.73mm)

LOD: 68' 3" (20.78mm)

Max Draft: 5' 9" (1.73mm)

Speed, Capacities and Weight

Water Capacity: 240 Gallons

Fuel Capacity: 924 Gal Gallons

Accommodations

Total Cabins: 4

Hull and Deck Information

Hull Material: Fiberglass

Engine Information

Engines: 2

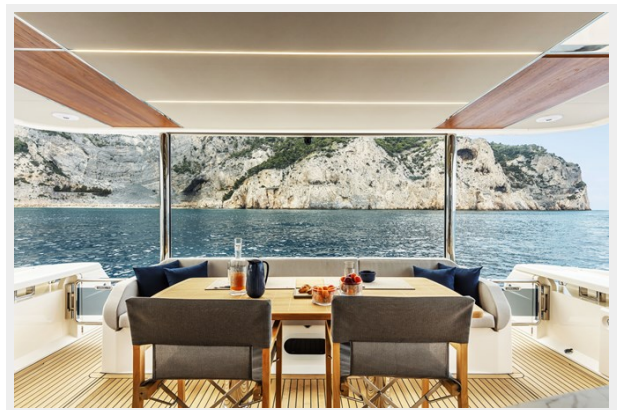
Manufacturer: Volvo Penta

Engine Type: Inboard

Fuel Type: Diesel

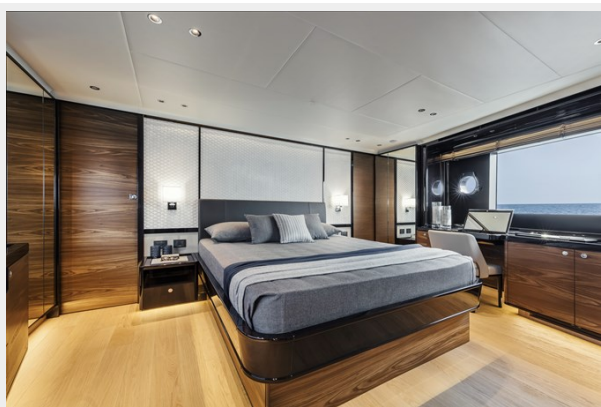
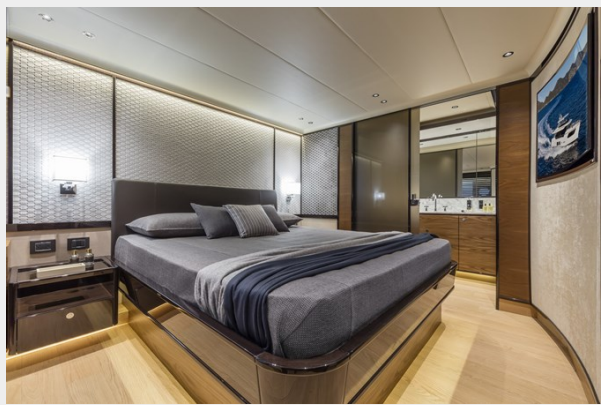
PHOTOS













CONTACTS

Andrey Shestakov, leading yacht broker of the sales department of Shestakov Yacht Sales Inc. Shestakov Yacht Sales Inc., the official representative of the Miami/Fort Lauderdale FL headquarters.

Contact details

Email: **andrey@shestakovyachtsales.com**

Web: shestakovyachtsales.com/en/

Telephones

USA: **+1(954)274-4435**

Office hours

Monday – Saturday: **9:00 - 21:00** EDT

Sunday: **closed**

Address



Harbour Towne Marina, 850 NE 3rd St, STE 213, Dania, FL 33004