

# 2025 ABSOLUTE NAVERTTA 68 — ABSOLUTE



**Судостроитель:** ABSOLUTE

**Длина общая:** 68' (20.73mm)

**Год постройки:** 2025

**Макс. осадка:** 5' 9" (1.73mm)

**Модель:** Flybridge

**Цена:** Price on Application

**Местонахождение:** United States

Купить **2025 Absolute Navertta 68 — ABSOLUTE** а также выбрать подходящую вам яхту из нашего **каталога яхт** вам поможет опытный яхтенный брокер Андрей Шестаков. На сегодняшний день компания **Shestakov Yacht Sales Inc.** имеет большое количество яхт в **собственном списке продаж**, а также тесно сотрудничает со всеми крупными **яхтенными производителями** по всему миру.

Для того чтобы купить яхту **2025 Absolute Navertta 68 — ABSOLUTE** а также проконсультироваться по любому вопросу связанному с покупкой, продажей, чартером яхт позвоните по телефону **+7(918)465-66-44**.

# ОГЛАВЛЕНИЕ

---

ОГЛАВЛЕНИЕ	2
ХАРАКТЕРИСТИКИ	3
Обзор	3
Основная информация	4
Размеры	4
Скорость, вместимость и масса	5
Размещение	5
Корпус и палуба	5
Информация о двигателе	5
ФОТОГРАФИИ	6
КОНТАКТЫ	12
Контактная информация	12
Телефоны	12
Время работы	12
Адрес	12

# ХАРАКТЕРИСТИКИ

## Обзор

A vision among the waves

Sinuous, elegant and refined: the Navetta 68, “The Absolute Vision”, is one of a kind sea creature able to capture the eyes of the most demanding and passionate navigators on the planet who let themselves be embraced by the most intense emotions.

An absolute comfort reigns in indoor and outdoor spaces dedicated to the conviviality, in a framework of precious and elegant materials, according to the unique Made in Italy style.

The flybridge space is equipped with a hard top whose dimensions are similar to the ones of the mega yachts, that can cover the entire dining and piloting area.

On the lower deck there are four large cabins: the master cabin raised above the floating level, the VIP cabin and two cabins with single beds (one of which is equipped with an electric mechanism that allows you to join or divide the beds according to the needs), as well as two separate cabins for the crew.

Versatility and functionality are further enhanced by the presence of 6 sliding doors and a large storage compartment.

The main deck is characterized by brightness, elegance and flexibility of use. Just think of the entrance door to the salon with an electric sliding window or an electric sliding glass that gives better privacy to the kitchen and living room.

Even the raised driving helm has a dividing wall with electric high and down mechanism and has been designed to offer the maximum comfort and the best visibility.

Nothing is left to chance in the Navetta 68, not even the engine room impeccably organized in order to allow easy operation and maintenance of the components.

Thanks to Absolute all this is no longer just a vision, but a real living experience aboard the Navetta 68.

Space turns into emotion

All the external areas are spacious and pleasant, as well as easily accessed promoting total safety. The bow deck—set up with a sofa, an extendable table, and a sun lounger—can be reached via wide walkways that are protected, covered, and lit.

The flybridge terrace is spacious: it offers a large relaxation area, an outdoor galley with a dining table, and a helm station with side sofas. You are free to navigate in the

company of your guests, while keeping everything under control.

The aft cockpit is designed to enhance the social side of the boat. It connects easily to the galley thanks to the opening windows and the vanishing electric glass in the shared cabinet. What could be the result? A large open space, surrounded by water, ready for your enjoyment.

### Comfort and elegance

The main deck has been designed with comfort in mind and offers a 360-degree panorama.

Here, you can enjoy a well-equipped galley, a living room, the salon, and the entertainment area which together offer great livability, making you feel right at home.

Thanks to creative design of the structure, which allows for four generously-sized cabins and six sliding doors, the spaces below deck are more than what you would expect from a 68-foot boat.

The master suite is located at the bow for exclusive privacy. Inside, you will find a large double bed, comfortable wardrobes for storing your luggage, and a vanity area. On both sides, two panoramic windows stretch the full beam, the en-suite head has a double sink and a large shower made with the best materials.

The other guest cabins are designed with the same care, allowing you to enjoy your vacation at its very best, truly at home at sea.

## Основная информация

---

**Тип судна:** Flybridge

**Подкатегория:** Flybridge

**Модельный год:** 2025

**Год постройки:** 2025

**Страна:** United States

## Размеры

---

**Длина общая:** 68' (20.73mm)

**Длина палубы:** 68' 3" (20.78mm)

**Макс. осадка:** 5' 9" (1.73mm)

## Скорость, вместимость и масса

---

**Вместимость воды:** 240 Gallons

**Объем топливного бака:** 924 Gal  
Gallons

## Размещение

---

**Всего кают:** 4

## Корпус и палуба

---

**Материал корпуса:** Fiberglass

## Информация о двигателе

---

**Двигатели:** 2

**Производитель:** Volvo Penta

**Тип двигателя:** Inboard

**Тип топлива:** Diesel

# ФОТОГРАФИИ

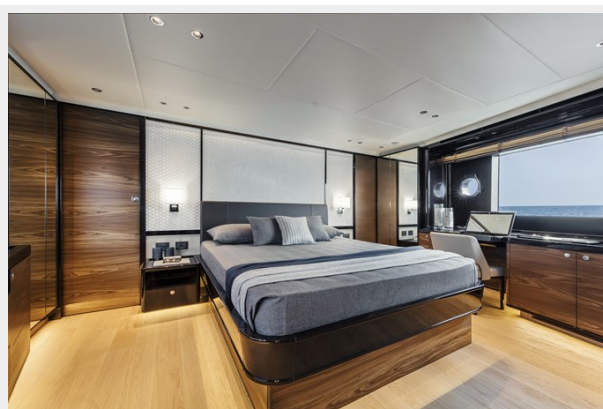
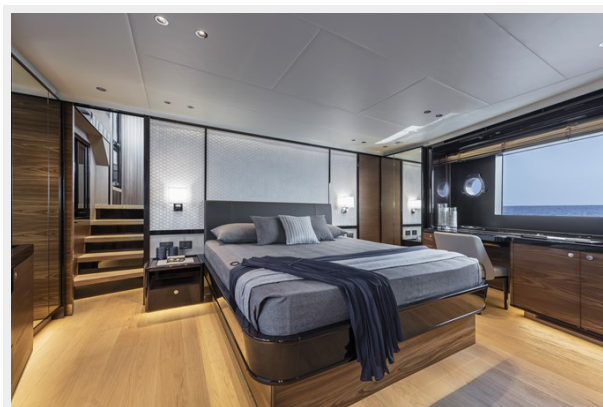
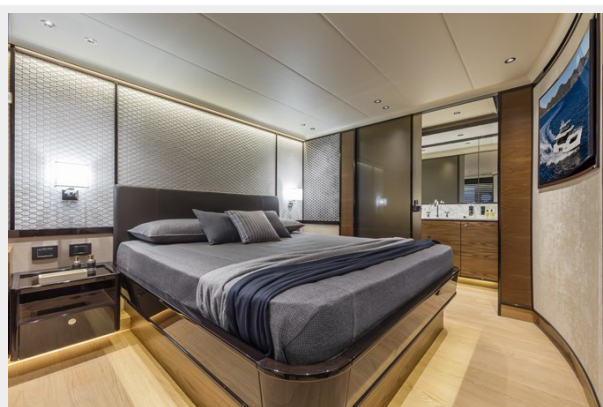














# КОНТАКТЫ

Андрей Шестаков (Andrey Shestakov) – ведущий яхтенный брокер отдела продаж яхт и судов компании Shestakov Yacht Sales Inc. Официальный представитель Shestakov Yacht Sales Inc. для русскоговорящих клиентов в центральном офисе компании в Майами/Форт Лодердейл/Флорида/США.

## Контактная информация

Email: **andrey@shestakovyachtsales.com**

Web: [shestakovyachtsales.com](http://shestakovyachtsales.com)

## Телефоны

Краснодарский край: **+7(918)465-66-44**

США, Майами, Флорида: **+1(954)274-4435**

## Время работы

Понедельник – Суббота: **9:00 - 21:00** EDT

Воскресенье: **Закрето**

## Адрес



Harbour Towne Marina, 850 NE 3rd St, STE 213, Dania, FL 33004