

# PROLINE 210 WALK AROUND — PROLINE



**Builder:** PROLINE

**Year Built:** 2003

**Model:** walkaround

**Price:** \$42,000 USD

**Location:** United States

**LOA:** 22' 6" (6.83mm)

**Beam:** 8.25

**Min Draft:** 1' 6" (0.46mm)

**Max Draft:** 2' 6" (0.76mm)

**Cruise Speed:** 25 Knots Kts. (29 MPH)

**Max Speed:** 35 Knots Kts. (40 MPH)

Our experienced yacht broker, Andrey Shestakov, will help you choose and buy a yacht that best suits your needs **Proline 210 Walk Around — PROLINE** from our catalogue. Presently, at **Shestakov Yacht Sales Inc.**, we have a wide variety of yachts available on our **sale's list**. We also work in close contact with all the big **yacht manufacturers** from all over the world.

If you would like to buy a yacht **Proline 210 Walk Around — PROLINE** or would like help answering any questions concerning purchasing, selling or chartering a yacht, please call **+1(954)274-4435**

---

# TABLE OF CONTENTS

---

TABLE OF CONTENTS	2
SPECIFICATIONS	4
Overview	4
Basic Information	4
Dimensions	4
Speed, Capacities and Weight	4
Accommodations	4
Hull and Deck Information	5
Engine Information	5
PHOTOS	6
IMG_8245	6
IMG_8246	6
IMG_8247	6
IMG_8248	6
IMG_8249	6
IMG_8250	6
IMG_8251	7
IMG_8252	7
IMG_8253	7
IMG_8254	7
IMG_8255	7
IMG_8256	7
IMG_8257	8
IMG_8258	8
IMG_8259	8
IMG_8260	8
IMG_8261	8
IMG_8262	8

---

IMG_8263	9
IMG_8264	9
IMG_8265	9
IMG_8266	9
IMG_8268	9
IMG_8267	9
IMG_8269	10
IMG_8270	10
IMG_8271	10
IMG_8272	10
IMG_8274	10
IMG_8275	11
IMG_8276	11
IMG_8278	11
IMG_8277	11
IMG_8280	12
IMG_8281	12
IMG_8282	12
IMG_8283	12
IMG_8284	12
IMG_8285	13
IMG_8286	13
CONTACTS	14
Contact details	14
Telephones	14
Office hours	14
Address	14

---

---

# SPECIFICATIONS

---

## Overview

---

Just Updated Proline 22 Walk Around !!! New Honda 4-Stroke and Much More!!!

## Basic Information

---

**Category:** walkaround

**Sub Category:** Walk-around

**Model Year:** 2003

**Year Built:** 2003

**Country:** United States

## Dimensions

---

**LOA:** 22' 6" (6.83mm)

**Beam:** 8.25

**Min Draft:** 1' 6" (0.46mm)

**Max Draft:** 2' 6" (0.76mm)

## Speed, Capacities and Weight

---

**Cruise Speed:** 25 Knots Kts. (29 MPH) **Cruise Speed Range:** 180

**Max Speed:** 35 Knots Kts. (40 MPH) **Max Speed Range:** 140 Kts.

**Gross Tonnage:** 4.6 Pounds

**Fuel Capacity:** 95 Gal Gallons

## Accommodations

---

**Total Cabins:** 1

**Total Berths:** 2

**Sleeps:** 2

**Total Heads:** 1

---

## Hull and Deck Information

---

**Hull Material:** Fiberglass

**Deck Material:** Composite Fiberglass

**Hull Configuration:** Deep Vee

**Hull Color:** White

**Hull Designer:** PROLINE

**Interior Designer:** PROLINE

---

## Engine Information

---

**Engines:** 1

**Manufacturer:** Honda

**Engine Type:** Outboard

**Fuel Type:** Gas/Petrol

# PHOTOS

**IMG\_8245**



**IMG\_8246**



**IMG\_8247**



**IMG\_8248**



**IMG\_8249**



**IMG\_8250**



**IMG\_8251**



**IMG\_8252**



**IMG\_8253**



**IMG\_8254**



**IMG\_8255**



**IMG\_8256**



**IMG\_8257**



**IMG\_8258**



**IMG\_8259**



**IMG\_8260**



**IMG\_8261**



**IMG\_8262**





**IMG\_8263**



**IMG\_8264**



**IMG\_8265**



**IMG\_8266**



**IMG\_8268**



**IMG\_8267**



**IMG\_8269**



**IMG\_8270**



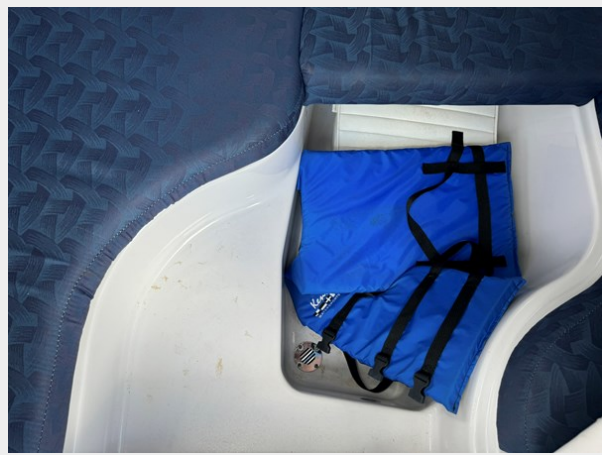
**IMG\_8271**



**IMG\_8272**



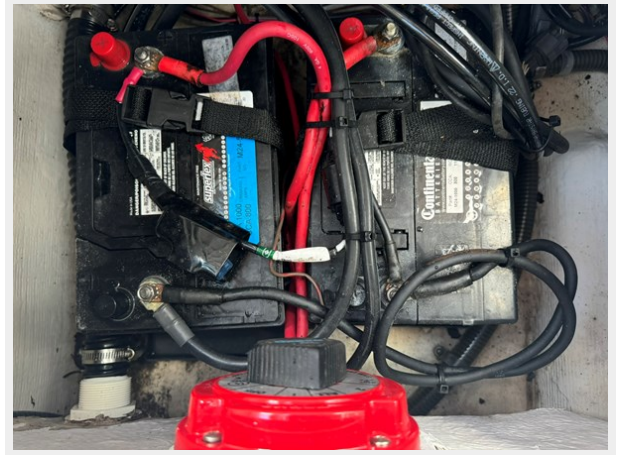
**IMG\_8274**



IMG\_8275



IMG\_8276



IMG\_8278



IMG\_8277



IMG\_8280



IMG\_8281



IMG\_8282



IMG\_8283



IMG\_8284



IMG\_8285



IMG\_8286



# CONTACTS

---

Andrey Shestakov, leading yacht broker of the sales department of Shestakov Yacht Sales Inc. Shestakov Yacht Sales Inc., the official representative of the Miami/Fort Lauderdale FL headquarters.

## Contact details

---

Email: **andrey@shestakovyachtsales.com**

Web: [shestakovyachtsales.com/en/](http://shestakovyachtsales.com/en/)

## Telephones

---

USA: **+1(954)274-4435**

## Office hours

---

Monday – Saturday: **9:00 - 21:00** EDT

Sunday: **closed**

## Address

---



Harbour Towne Marina, 850 NE 3rd St, STE 213, Dania, FL 33004