

AT LAST — HEESEN YACHTS



Builder: HEESEN YACHTS

Year Built: 1990

Model: Motor Yacht

Price: \$3,650,000 USD

Location: United States

LOA: 145' (44.2mm)

Beam: 27.16

Max Draft: 6' 10" (2.08mm)

Cruise Speed: 13 Knots Kts. (15 MPH)

Max Speed: 17 Knots Kts. (20 MPH)

Our experienced yacht broker, Andrey Shestakov, will help you choose and buy a yacht that best suits your needs **At Last — HEESEN YACHTS** from our catalogue. Presently, at **Shestakov Yacht Sales Inc.**, we have a wide variety of yachts available on our sale's list. We also work in close contact with all the big **yacht manufacturers** from all over the world.

If you would like to buy a yacht **At Last — HEESEN YACHTS** or would like help answering any questions concerning purchasing, selling or chartering a yacht, please call **+1(954)274-4435**

TABLE OF CONTENTS

TABLE OF CONTENTS	2
SPECIFICATIONS	3
Overview	3
Basic Information	4
Dimensions	4
Speed, Capacities and Weight	4
Accommodations	4
Hull and Deck Information	4
Engine Information	4
PHOTOS	5
CONTACTS	17
Contact details	17
Telephones	17
Office hours	17
Address	17

SPECIFICATIONS

Overview

Having once been a crew member on the esteemed motor yacht AT LAST, I am now proud to offer her for sale as your dedicated yacht broker. My firsthand experience on board allows me to present a unique perspective on the exceptional comfort and luxury this vessel provides.

AT LAST offers an unparalleled level of comfort, with a contemporary interior designed by the renowned Tui Pranich. The expansive design creates a bright and relaxed atmosphere throughout the yacht, perfect for unwinding in style.

Privacy is paramount on AT LAST. The full-beam master stateroom, located forward on the main deck, features a centerline king-size bed that offers stunning panoramic views. The master bathroom is nothing short of lavish, boasting a large Jacuzzi tub, a spacious shower with a rain shower head, and three wall-fitted shower heads.

In addition to the master suite, AT LAST accommodates guests in a variety of staterooms: one additional king stateroom, two queen staterooms, and a twin stateroom with an additional Pullman berth. This configuration, totaling five staterooms, caters to the needs of a large family or makes her an ideal charter yacht. The king and queen staterooms feature ensuite bathrooms with modern glass showers, while the twin stateroom's ensuite bathroom offers a Jacuzzi tub/glass shower combination. Each guest stateroom is equipped with large portholes, flooding the rooms with natural light.

The smart layout of AT LAST places all toy and tender storage on the main deck aft, minimizing noise and disturbance when retrieving these items. This thoughtful design means there are no large cranes on the bridge deck aft or sundeck, enhancing the relaxed ambiance on board.

The sundeck is a highlight of AT LAST, offering the perfect setting for an afternoon of leisure. It features a large Jacuzzi aft with a comfortable pad surrounding it, as well as a massive full-beam sunpad forward with large umbrellas for shade. Additional amenities include a spacious bar with seating, a barbecue grill, and a bench seat with a smaller dining table.

Powered by MTU engines installed in 2009 and propelled by Kamewa waterjets, AT LAST boasts an incredibly shallow draft for a yacht of her size. This allows her to anchor easily in private and pristine destinations in The Bahamas and other shallow waters around the globe.

Having experienced the exceptional qualities of AT LAST firsthand, I can assure you that she represents the pinnacle of luxury yachting. Whether for personal use or as a

lucrative charter opportunity, AT LAST is a yacht that stands out in every aspect.

Basic Information

Category: Motor Yacht

Model Year: 1990

Year Built: 1990

Country: United States

Dimensions

LOA: 145' (44.2mm)

LWL: 121' 6" (37.01mm)

Beam: 27.16

Max Draft: 6' 10" (2.08mm)

Speed, Capacities and Weight

Cruise Speed: 13 Knots Kts. (15 MPH) **Max Speed:** 17 Knots Kts. (20 MPH)

Water Capacity: 4125 Gallons

Holding Tank: 426 Gal Gallons

Fuel Capacity: 19569 Gal Gallons

Accommodations

Total Cabins: 5

Total Heads: 5

Hull and Deck Information

Hull Material: Aluminum

Engine Information

Engines: 2

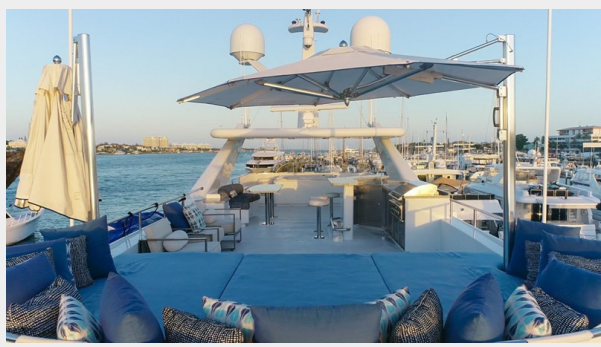
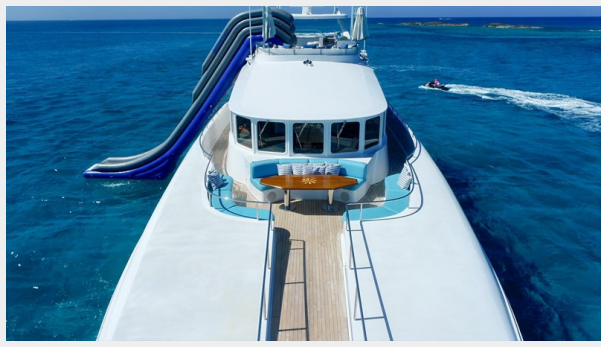
Manufacturer: MTU

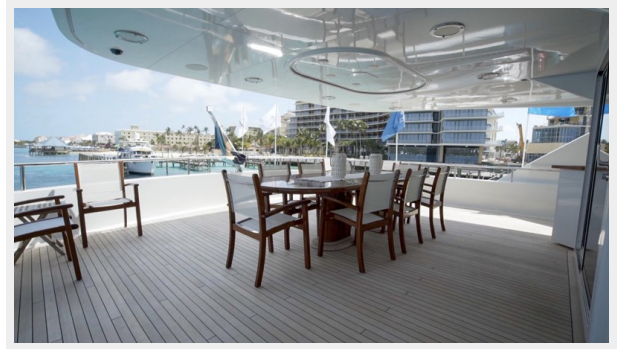
Engine Type: Inboard

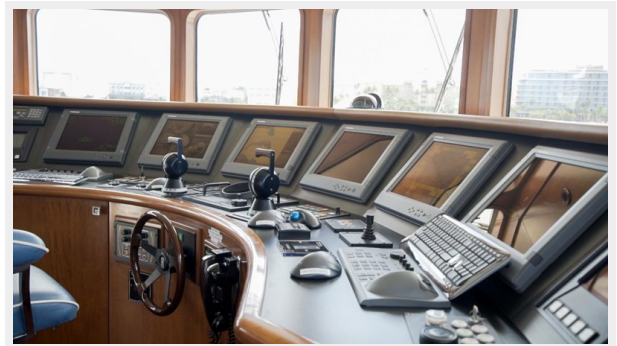
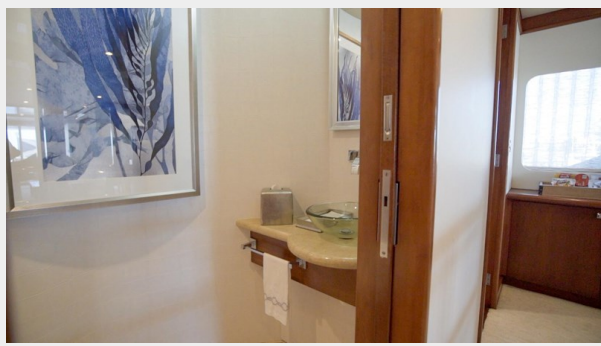
Fuel Type: Diesel

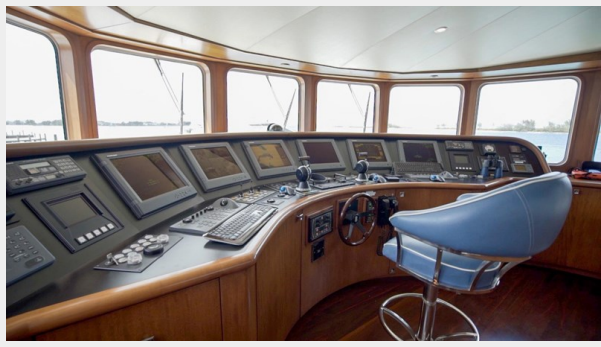
PHOTOS





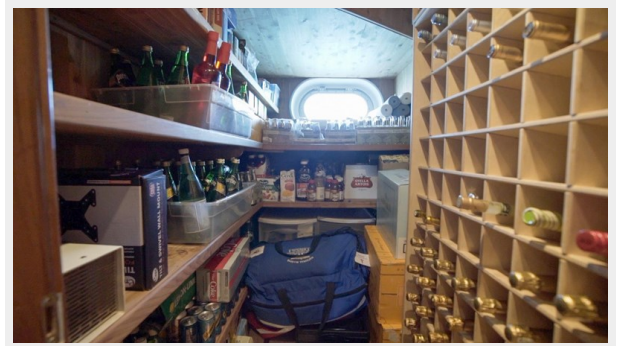


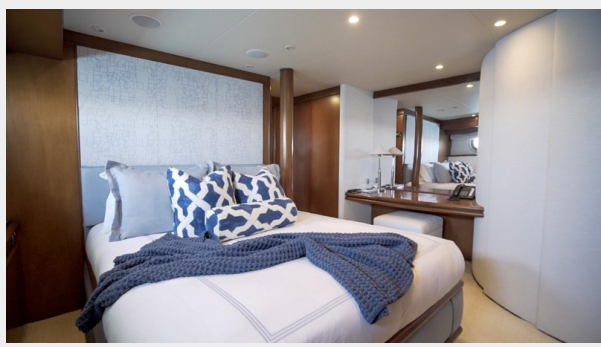




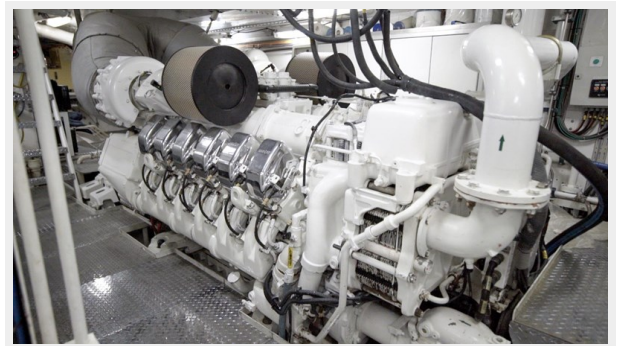


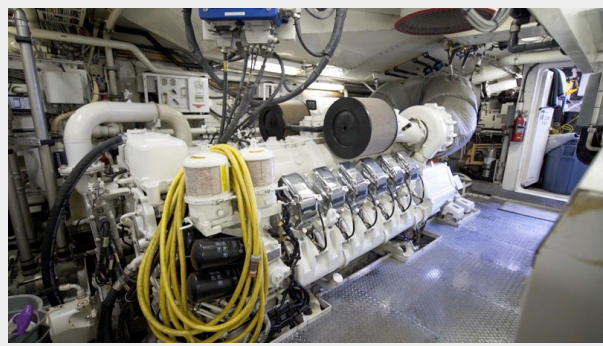
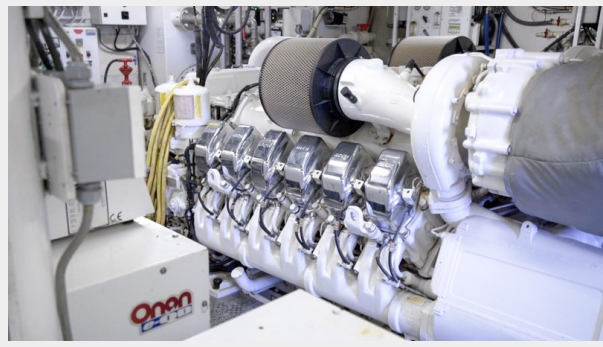












CONTACTS

Andrey Shestakov, leading yacht broker of the sales department of Shestakov Yacht Sales Inc. Shestakov Yacht Sales Inc., the official representative of the Miami/Fort Lauderdale FL headquarters.

Contact details

Email: **andrey@shestakovyachtsales.com**

Web: shestakovyachtsales.com/en/

Telephones

USA: **+1(954)274-4435**

Office hours

Monday – Saturday: **9:00 - 21:00** EDT

Sunday: **closed**

Address



Harbour Towne Marina, 850 NE 3rd St, STE 213, Dania, FL 33004