

34' MAINSHIP 1985 — MAINSHIP



Builder: MAINSHIP

LOA: 34' 1" (10.39mm)

Year Built: 1985

Model: cruiser

Price: \$40,000 USD

Location: United States

Our experienced yacht broker, Andrey Shestakov, will help you choose and buy a yacht that best suits your needs **34' MAINSHIP 1985 — MAINSHIP** from our catalogue. Presently, at **Shestakov Yacht Sales Inc.**, we have a wide variety of yachts available on our sale's list. We also work in close contact with all the big **yacht manufacturers** from all over the world.

If you would like to buy a yacht **34' MAINSHIP 1985 — MAINSHIP** or would like help answering any questions concerning purchasing, selling or chartering a yacht, please call **+1(954)274-4435**

TABLE OF CONTENTS

TABLE OF CONTENTS	2
SPECIFICATIONS	4
Overview	4
Basic Information	5
Dimensions	5
Accommodations	5
Hull and Deck Information	5
Engine Information	5
PHOTOS	6
YS240141_01	6
YS240141_02	6
YS240141_03	6
YS240141_04	6
YS240141_05	6
YS240141_06	6
YS240141_07	7
YS240141_08	7
YS240141_09	7
YS240141_10	7
YS240141_11	7
YS240141_12	7
YS240141_13	8
YS240141_14	8
YS240141_15	8
YS240141_16	8
YS240141_17	8
YS240141_18	8
YS240141_19	9

YS240141_20	9
YS240141_21	9
YS240141_22	9
YS240141_23	9
YS240141_24	9
YS240141_25	10
CONTACTS	11
Contact details	11
Telephones	11
Office hours	11
Address	11

SPECIFICATIONS

Overview

“CURRENT PRICE” IS A GUIDE. ALL OFFERS RESPECTFULLY CONSIDERED. General Description Powerboatguide.com "The Mainship 34 III is a refined and more stylish version of the original Mainship 34 (1978-82). In the 34 III, the salon was slightly lengthened and the extended hardtop of the original Mainship 34 was eliminated in favor of a more open cockpit. Designed for fuel-efficient cruising, she rides on a solid fiber glass hull with rounded bilges and a long keel for directional stability. (Note that the keel is deep enough to protect the prop and running gear.)....." Actual Condition This beautiful MK III was going through a recent re-fit when the owner relocated, forcing this great boat on the market for sale. Approx 1,900 hrs on the Volvo Diesel. Great running and very fuel efficient at a 14 knot cruise. Some of the recent upgrades: *Volvo EVC display system* 2000-watt inverter/charger* Auto pilot* Bow thruster 2023* New 2023 Marin Aire 1600kW* Bottom paint Feb 2023* 2 solar panels- keeps batteries charged, runs all DC breakers* New LED lights replaced inside cabin* On demand hot water heater* AC/DC fridge* 2 GPS, Raymarine and Garmin 2023* Dometic marine macerator toilet* New marine grade flooring in the cabin The forward stateroom will require some finish work to the cosmetics. Otherwise this yacht is ready to cruise. She can be seen by appointment only. This is a perfect vessel for the great-loop and coastal cruising. Take a look and make your offer. Equipment A trailer is not included in this sale. Nationwide transportation is available through Certified Marine Transport, get a transportation Quote. Custom Cradles and shipment to port for overseas transport also supplied. Call (508) 478-0200 for logistics and quotes. Engine(s) Condition Please read Motors and Machinery Disclaimer. Transportation Nationwide Transport is available through Certified Marine Transport.com Custom Cradles and shipment to ports for overseas transport also supplied. Call Robert or Brian at our Mendon, MA office for logistics and quotes. Motors and Machinery Disclaimer No statement of condition can be made regarding motors, engines or machinery, whatsoever. A photo may appear of the engine compartment and machinery, but it is entirely the buyers responsibility to inspect and determine their actual condition. All offers are considered. Do not assume accessories or equipment for this vessel may be in storage. This vessel is being sold as seen. Disclaimer: The Company offers the details of this vessel in good faith but cannot guarantee or warrant the accuracy of this information nor warrant the condition of the vessel. A Buyer should investigate such details as the buyer desires validated. This vessel is offered subject to prior sale, price change, or withdrawal without notice. All Marine products be they owned or brokered by Certified Sales, Inc. or its associates, are sold AS-IS, WHERE-IS, NO WARRANTY OR GUARANTEE EXPRESSED OR IMPLIED. NO WARRANTIES OF MERCHANTABILITY AND FITNESS WHAT-SO-EVER. No verbal agreements can be applied to the sale of this marine product.

Basic Information

Category: cruiser

Model Year: 1985

Year Built: 1985

Country: United States

Dimensions

LOA: 34' 1" (10.39mm)

Accommodations

Total Cabins: 1

Hull and Deck Information

Hull Material: Fiberglass

Engine Information

Engines: 1

Manufacturer: Volvo Penta

PHOTOS

YS240141_01



YS240141_02



YS240141_03



YS240141_04



YS240141_05



YS240141_06



YS240141_07



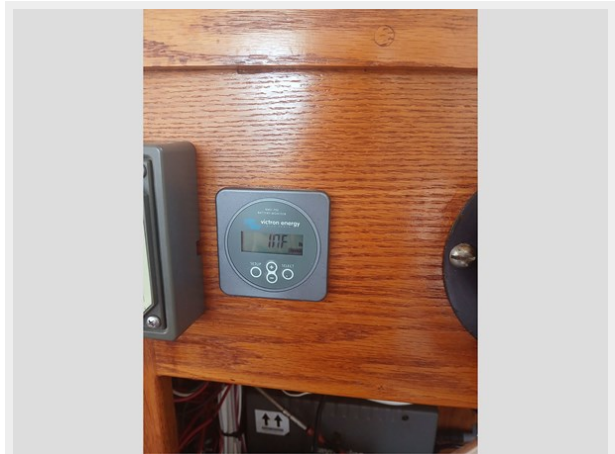
YS240141_08



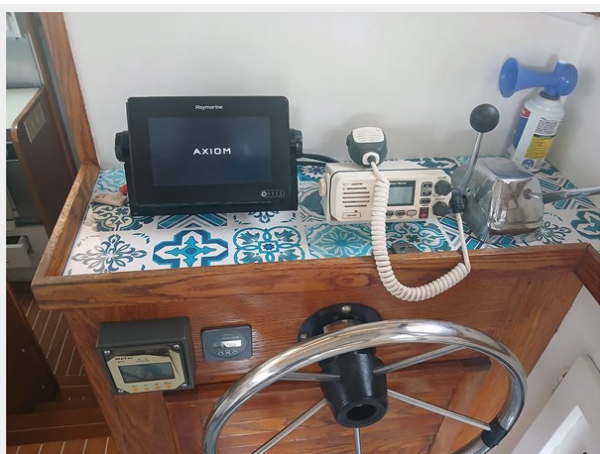
YS240141_09



YS240141_10



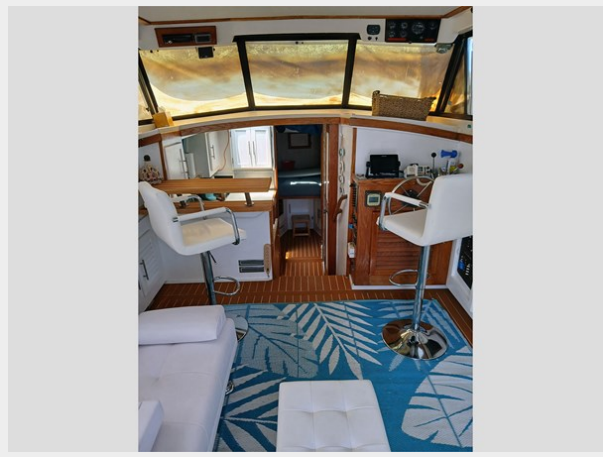
YS240141_11



YS240141_12



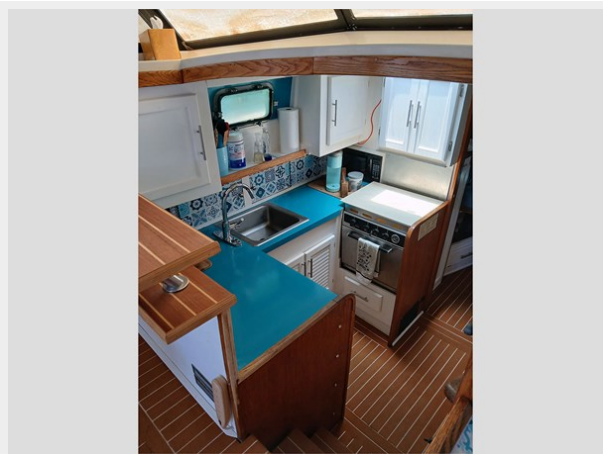
YS240141_13



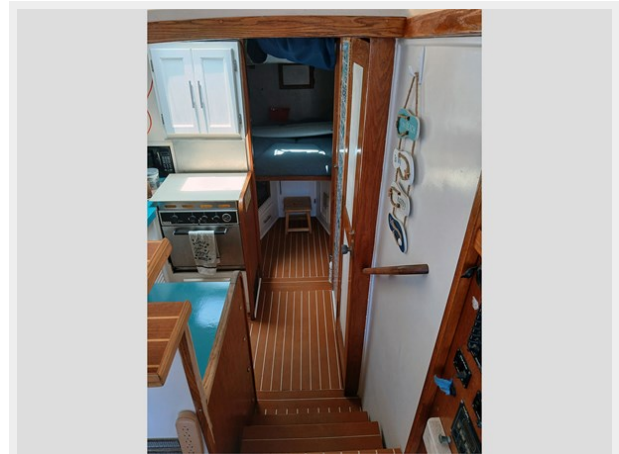
YS240141_14



YS240141_15



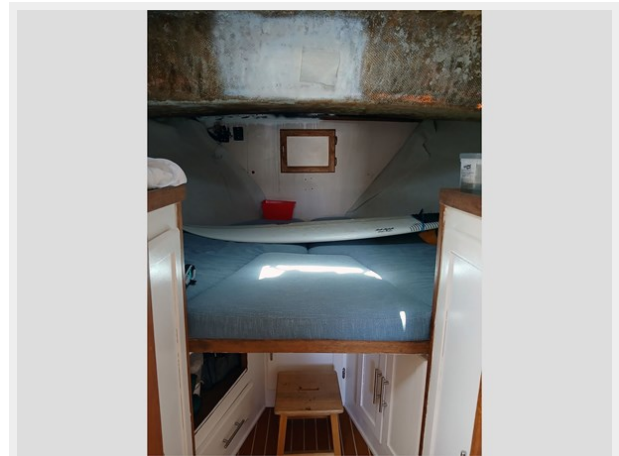
YS240141_16



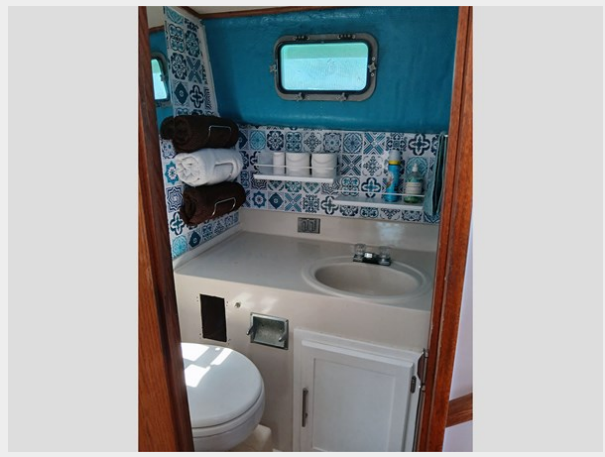
YS240141_17



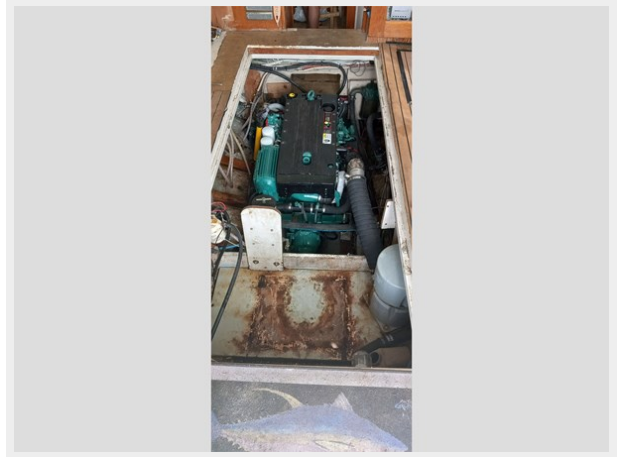
YS240141_18



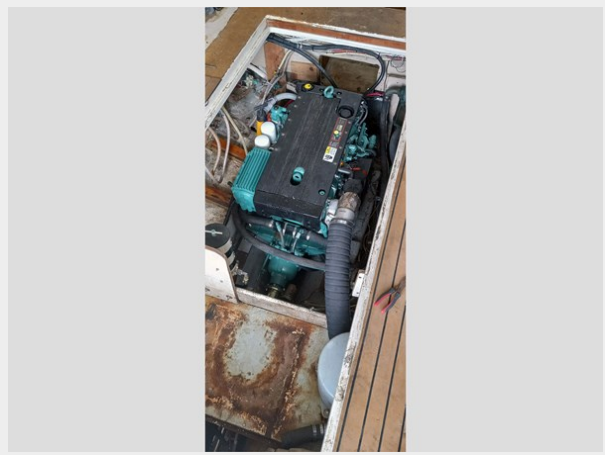
YS240141_19



YS240141_20



YS240141_21



YS240141_22



YS240141_23



YS240141_24



YS240141_25



CONTACTS

Andrey Shestakov, leading yacht broker of the sales department of Shestakov Yacht Sales Inc. Shestakov Yacht Sales Inc., the official representative of the Miami/Fort Lauderdale FL headquarters.

Contact details

Email: **andrey@shestakovyachtsales.com**

Web: shestakovyachtsales.com/en/

Telephones

USA: **+1(954)274-4435**

Office hours

Monday – Saturday: **9:00 - 21:00** EDT

Sunday: **closed**

Address



Harbour Towne Marina, 850 NE 3rd St, STE 213, Dania, FL 33004