

32' LEGACY 2011 — LEGACY



Судостроитель: LEGACY

Длина общая: 32' 1" (9.78mm)

Год постройки: 2011

Модель: Траулер

Цена: \$99,000 USD

Местонахождение: United States

Купить **32' LEGACY 2011 — LEGACY** а также выбрать подходящую вам яхту из нашего **каталога яхт** вам поможет опытный яхтенный брокер Андрей Шестаков. На сегодняшний день компания **Shestakov Yacht Sales Inc.** имеет большое количество яхт в **собственном списке продаж**, а также тесно сотрудничает со всеми крупными **яхтенными производителями** по всему миру.

Для того чтобы купить яхту **32' LEGACY 2011 — LEGACY** а также проконсультироваться по любому вопросу связанному с покупкой, продажей, чартером яхт позвоните по телефону **+7(918)465-66-44**.

ОГЛАВЛЕНИЕ

ОГЛАВЛЕНИЕ	2
ХАРАКТЕРИСТИКИ	4
Обзор	4
Основная информация	5
Размеры	5
Размещение	5
Корпус и палуба	5
Информация о двигателе	5
ФОТОГРАФИИ	6
YS240114_01	6
YS240114_02	6
YS240114_03	6
YS240114_04	6
YS240114_05	6
YS240114_06	6
YS240114_07	7
YS240114_08	7
YS240114_09	7
YS240114_10	7
YS240114_11	7
YS240114_12	7
YS240114_13	8
YS240114_14	8
YS240114_15	8
YS240114_16	8
YS240114_16b	8
YS240114_17	8
YS240114_18	9

YS240114_19	9
YS240114_20	9
YS240114_21	9
YS240114_22	9
YS240114_23	9
YS240114_24	10
YS240114_25	10
YS240114_26	10
YS240114_28	10
YS240114_29	10
YS240114_30	10
YS240114_31	11
YS240114_32	11
YS240114_33	11
YS240114_34	11
YS240114_35	11
КОНТАКТЫ	12
Контактная информация	12
Телефоны	12
Время работы	12
Адрес	12

ХАРАКТЕРИСТИКИ

Обзор

“CURRENT PRICE” IS A GUIDE. ALL OFFERS RESPECTFULLY CONSIDERED. GENERAL DESCRIPTIONShe is a rugged full displacement boat with a full keel, canoe stern, single screw, bow thruster, enclosed aft pilothouse set-up for comfortable cruising by two people, and with many features not often found on a boat this size.

ACTUAL CONDITIONThis is the perfect boat for the Great Loop and coastal Cruising. A full displacement hull with a canoe stern, full keel, and port and starboard bilge keels. The vessel just completed a 544 nautical mile journey with good reports. She is a semi-custom Legacy 32 MK III with many upgrades from the standard. Well-constructed and beautifully built. She is readily available for viewing by appointment. Don't miss this opportunity for a great long-range cruiser. Get your next journey started.

EQUIPMENTBow Thruster Sine Wave DC to AC Inverter Shore Power Isolation Transformer Complete Winter Cover and Cradle

A trailer is not included in this sale.

Nationwide transportation is available through Certified Marine Transport, get a transportation Quote. Custom Cradles and shipment to port for overseas transport also supplied. Call our Mendon, MA office for logistics and quotes.

ENGINE(S) CONDITIONPlease read Motors and Machinery Disclaimer.

TRANSPORTATIONNationwide Transport is available through Certified Marine Transport.com Custom Cradles and shipment to ports for overseas transport also supplied. Call Robert or Brian at our Mendon, MA office for logistics and quotes.

MOTORS AND MACHINERY DISCLAIMERNo statement of condition can be made regarding motors, engines or machinery, whatsoever. A photo may appear of the engine compartment and machinery, but it is entirely the buyers responsibility to inspect and determine their actual condition.

Do not assume accessories or equipment for this unit may be in storage. This unit is being sold as seen. Make an offer or bid for this unit according to what she has when you view her. Disclaimer: The Company offers the details of this vessel in good faith but cannot guarantee or warrant the accuracy of this information nor warrant the condition of the vessel. A Buyer should investigate such details as the buyer desires validated. This vessel is offered subject to prior sale, price change, or withdrawal without notice.

All Marine products be they owned or brokered by Certified Sales, Inc. or its associates, are sold AS-IS, WHERE-IS, NO WARRANTY OR GUARANTEE EXPRESSED OR IMPLIED. NO WARRANTIES OF MERCHANTABILITY AND FITNESS WHAT-SO-EVER. No verbal agreements can be applied to the sale of this marine product.

Основная информация

Тип судна: Траулер

Подкатегория: Tug

Модельный год: 2011

Год постройки: 2011

Страна: United States

Размеры

Длина общая: 32' 1" (9.78mm)

Размещение

Всего кают: 1

Корпус и палуба

Материал корпуса: Fiberglass

Информация о двигателе

Двигатели: 1

Производитель: Yanmar

ФОТОГРАФИИ

YS240114_01



YS240114_02



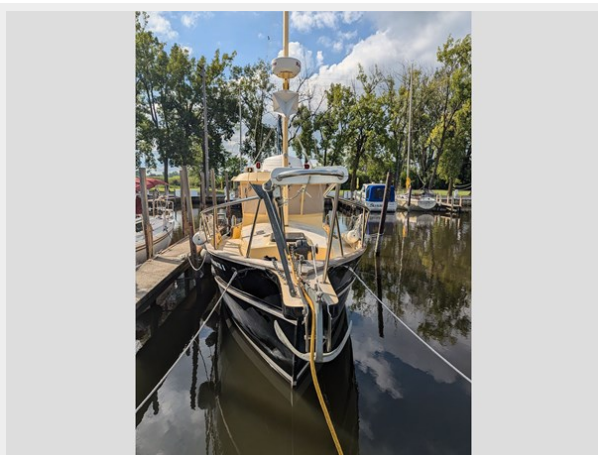
YS240114_03



YS240114_04



YS240114_05



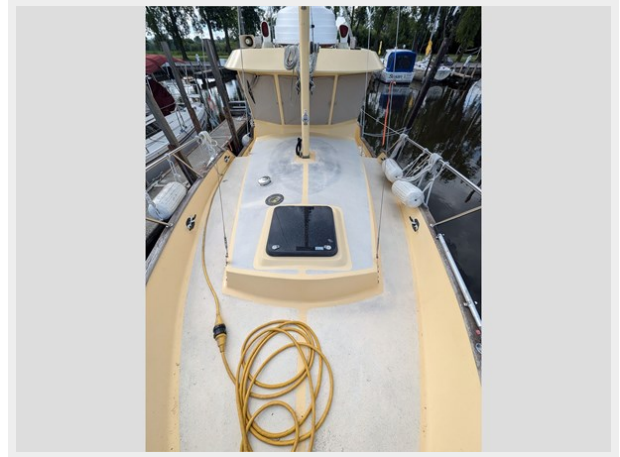
YS240114_06



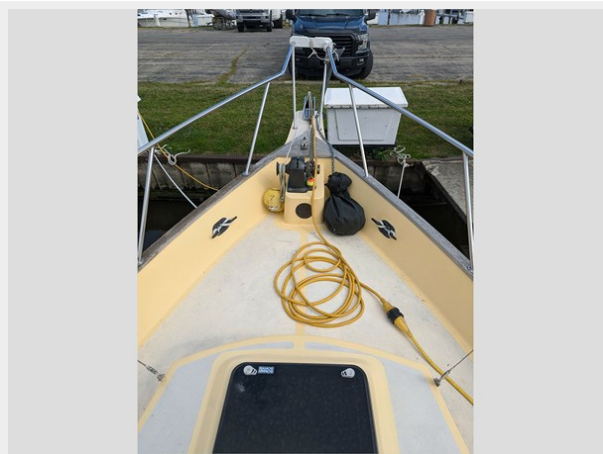
YS240114_07



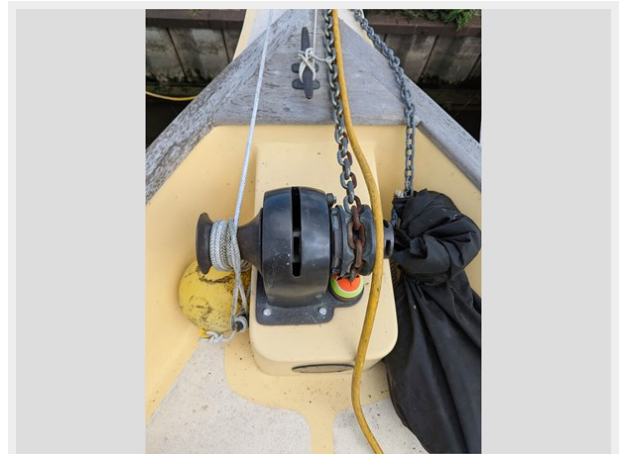
YS240114_08



YS240114_09



YS240114_10



YS240114_11



YS240114_12



YS240114_13



YS240114_14



YS240114_15



YS240114_16



YS240114_16b



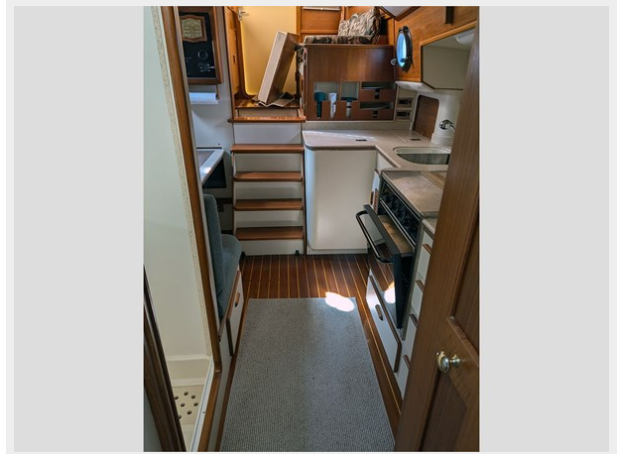
YS240114_17



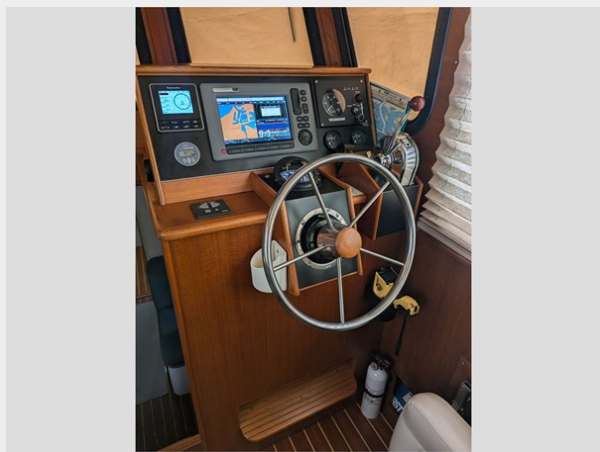
YS240114_18



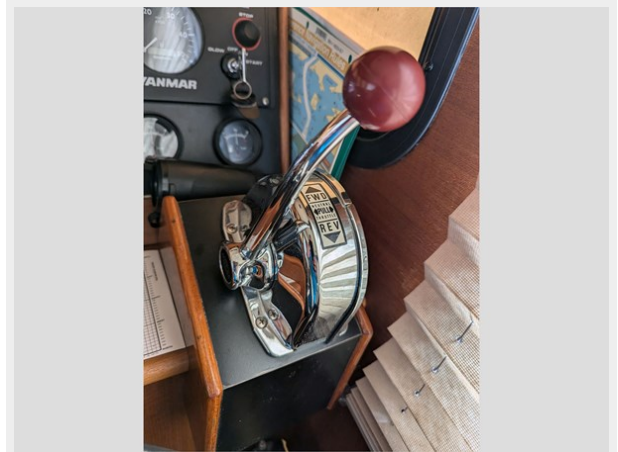
YS240114_19



YS240114_20



YS240114_21



YS240114_22



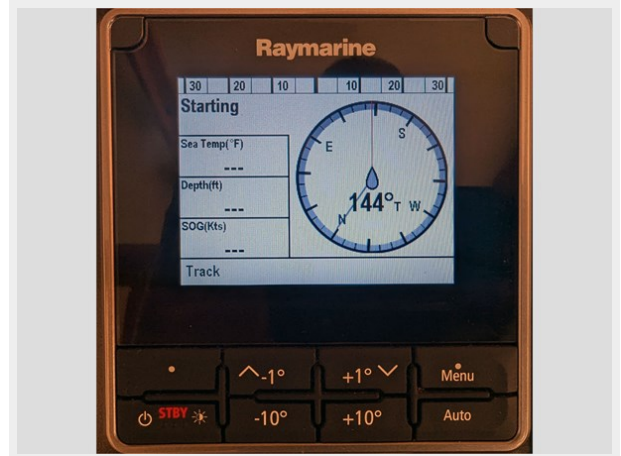
YS240114_23



YS240114_24



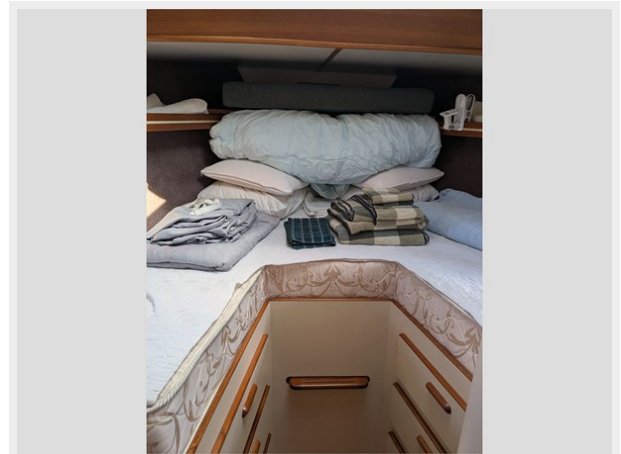
YS240114_25



YS240114_26



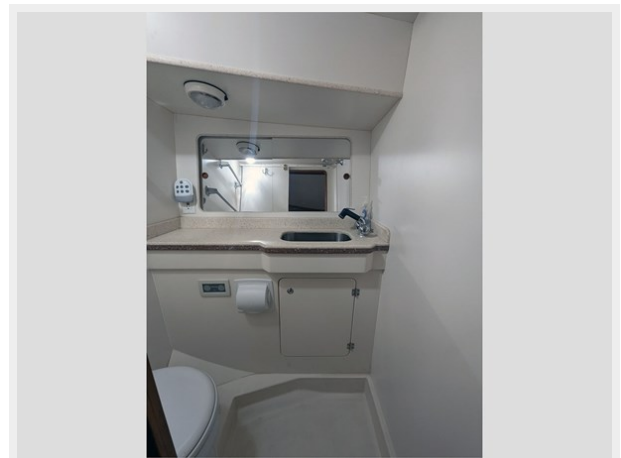
YS240114_28



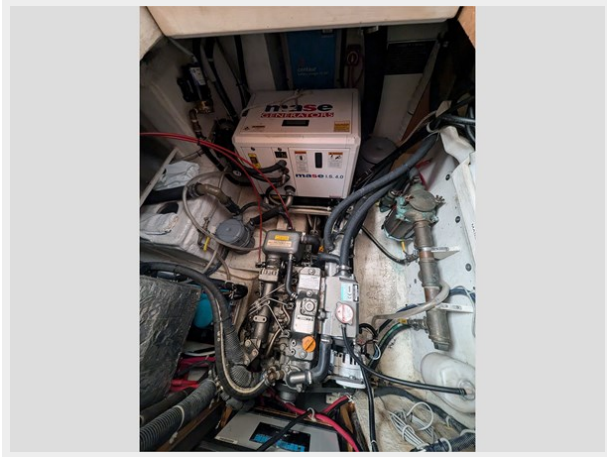
YS240114_29



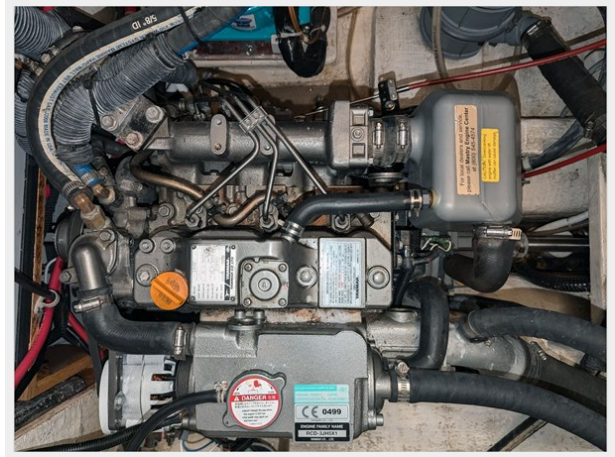
YS240114_30



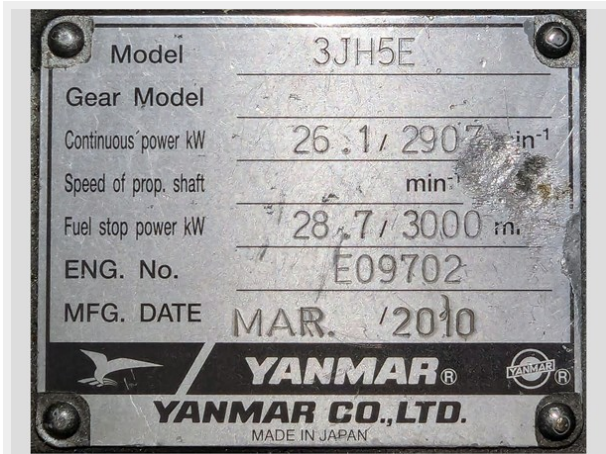
YS240114_31



YS240114_32



YS240114_33



YS240114_34



YS240114_35



КОНТАКТЫ

Андрей Шестаков (Andrey Shestakov) – ведущий яхтенный брокер отдела продаж яхт и судов компании Shestakov Yacht Sales Inc. Официальный представитель Shestakov Yacht Sales Inc. для русскоговорящих клиентов в центральном офисе компании в Майами/Форт Лодердейл/Флорида/США.

Контактная информация

Email: **andrey@shestakovyachtsales.com**

Web: shestakovyachtsales.com

Телефоны

Краснодарский край: **+7(918)465-66-44**

США, Майами, Флорида: **+1(954)274-4435**

Время работы

Понедельник – Суббота: **9:00 - 21:00** EDT

Воскресенье: **Закрыто**

Адрес



Harbour Towne Marina, 850 NE 3rd St, STE 213, Dania, FL 33004