

## THANKS BUDS — FEADSHIP



**Builder:** FEADSHIP

**Year Built:** 1985

**Model:** Convertible

**Price:** \$1,095,000 USD

**Location:** N/A

**LOA:** 87' 4" (26.62mm)

**Beam:** 21.16

**Min Draft:** 5' 10" (1.78mm)

**Max Draft:** 6' (1.83mm)

**Cruise Speed:** 23 Knots Kts. (26 MPH)

**Max Speed:** 25 Knots Kts. (29 MPH)

Our experienced yacht broker, Andrey Shestakov, will help you choose and buy a yacht that best suits your needs **THANKS BUDS — FEADSHIP** from **our catalogue**. Presently, at **Shestakov Yacht Sales Inc.**, we have a wide variety of yachts available on **our sale's list**. We also work in close contact with all the big **yacht manufacturers** from all over the world.

If you would like to buy a yacht **THANKS BUDS — FEADSHIP** or would like help answering any questions concerning purchasing, selling or chartering a yacht, please call **+1(954)274-4435**

# TABLE OF CONTENTS

TABLE OF CONTENTS	2
SPECIFICATIONS	5
Overview	5
Basic Information	5
Dimensions	5
Speed, Capacities and Weight	5
Accommodations	5
Hull and Deck Information	6
Engine Information	6
PHOTOS	7
Salon Looking Forward	7
Salon Settee to Starboard	7
Salon Settee Looking Aft	7
Salon Seating to Port	7
Salon Seating Looking Forward Portside	7
Salon Seating Looking Aft to Port	7
Galley	8
Galley Looking to St	8
Galley Looking Aft	8
Galley	8
Starboard Side Freezer Area	8
Starboard Side Looking Forward	8
Portside Guest Cabin Looking Forward	9
Starboard Side Looking Aft	9
Portside Guest Cabin Head	9
Starboard Side Guest Cabin	9
Starboard Side Guest Head	9
Starboard Side Guest Cabin	9

Starboard Side Crew Head	10
Starboard Side Crew Cabin	10
Master Looking Forward	10
Master Looking to Port	10
Master Looking to Starboard	10
Master Settee	10
Master Head	11
Large Master Shower	11
Windlass	11
Bow	11
Bow	11
Tender	11
1700 lb Tender Crane	12
Cockpit	12
Fighting Chair	12
Observation Deck	12
Helm Detail	12
Aft Control Station	12
Helm Detail	13
Helm Looking to Port	13
Helm Detail	13
Helm Looking to Stbd.	13
Helm Detail	13
Seating Forward of Helm	13
Starboard Side Settee	14
Tower	14
Tower Helm	14
Tower Electronics	14
Tower Electronics	14

---

View Forward from Tower	14
View Aft from Tower	15
Engine Room Looking Forward	15
Starboard Engine	15
Port Engine	15
Twin 35 kW Northern Lights Generator	15
Port Engine	15
Sound Down Muffler	16
Alternate Profile	16
"Own an Icon"	16
Kahlenberg 5 Trumpet Hor	16
"There Are Yachts and There Are Feadships"	16
Mast	16
CONTACTS	17
Contact details	17
Telephones	17
Office hours	17
Address	17

---

# SPECIFICATIONS

---

## Overview

---

She was built as the second of two GALLANT LADY Feadship Sportfisherman. At the time of her build there were no larger pedigree "Yacht Fisherman" on the water. While the market has dictated newer larger and faster Sportfisherman none have the class, grace or quality of a Feadship. Largely in fact to her original design only systems have been upgraded. Her original Feadship features remain. Your chance to "own an icon."

## Basic Information

---

**Category:** Convertible

**Sub Category:** Convertible

**Model Year:** 1985

**Year Built:** 1985

**Country:** N/A

## Dimensions

---

**LOA:** 87' 4" (26.62mm)

**Beam:** 21.16

**Min Draft:** 5' 10" (1.78mm)

**Max Draft:** 6' (1.83mm)

## Speed, Capacities and Weight

---

**Cruise Speed:** 23 Knots Kts. (26 MPH) **Max Speed:** 25 Knots Kts. (29 MPH)

**Gross Tonnage:** 103 Pounds

**Water Capacity:** 1326 Gallons

**Holding Tank:** 485 Gal Gallons

**Fuel Capacity:** 3210 Gal Gallons

## Accommodations

---

**Total Cabins:** 4

**Sleeps:** 8

**Total Heads:** 4

---

## Hull and Deck Information

---

**Hull Material:** Aluminum

**Deck Material:** Aluminum

**Hull Configuration:** Planing

**Hull Designer:** de Voogt

**Exterior Designer:** de Voogt

**Interior Designer:** de Voogt

---

## Engine Information

---

**Engines:** 2

**Manufacturer:** Caterpillar

**Engine Type:** Inboard

**Fuel Type:** Diesel

# PHOTOS

**Salon Looking Forward**



**Salon Settee to Starboard**



**Salon Settee Looking Aft**



**Salon Seating to Port**



**Salon Seating Looking Aft to Port**



**Salon Seating Looking Forward Portside**



**Galley**



**Galley Looking to St**



**Galley Looking Aft**



**Galley**



**Starboard Side Freezer Area**

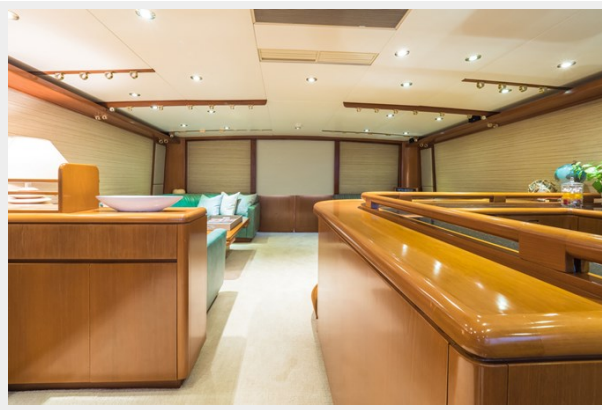


**Starboard Side Looking Forward**





**Starboard Side Looking Aft**



**Portside Guest Cabin Looking Forward**



**Portside Guest Cabin Head**



**Starboard Side Guest Cabin**



**Starboard Side Guest Head**



**Starboard Side Guest Cabin**



**Starboard Side Crew Head**



**Starboard Side Crew Cabin**



**Master Looking Forward**



**Master Looking to Port**



**Master Looking to Starboard**



**Master Settee**



**Master Head**



**Large Master Shower**



**Windlass**



**Bow**



**Bow**



**Tender**



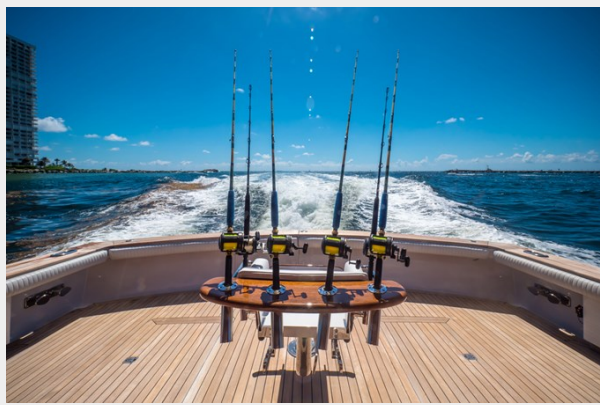
**1700 lb Tender Crane**



**Cockpit**



**Fighting Chair**



**Observation Deck**



**Aft Control Station**



**Helm Detail**



**Helm Detail**



**Helm Looking to Port**



**Helm Detail**



**Helm Looking to Stbd.**



**Helm Detail**



**Seating Forward of Helm**



**Starboard Side Settee**



**Tower**



**Tower Helm**



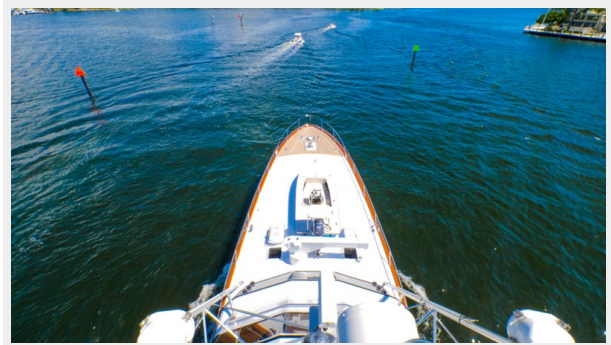
**Tower Electronics**



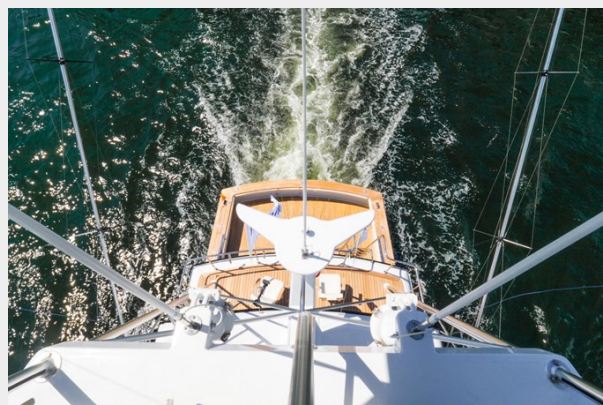
**Tower Electronics**



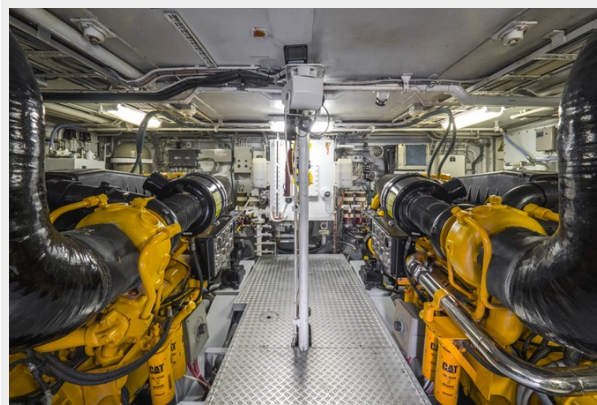
**View Forward from Tower**



**View Aft from Tower**



**Engine Room Looking Forward**



**Starboard Engine**



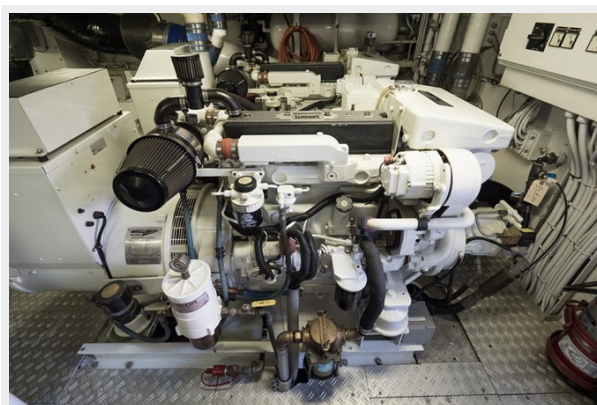
**Port Engine**



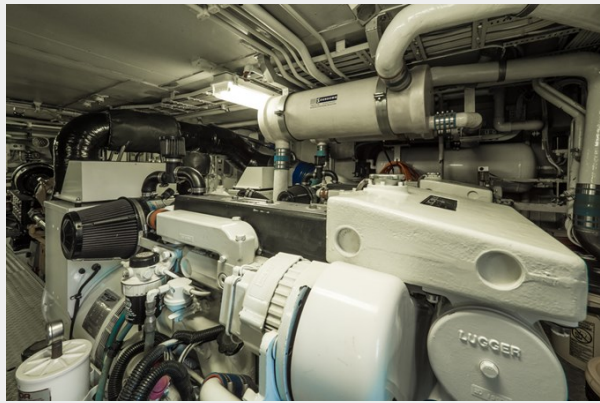
**Port Engine**



**Twin 35 kW Northern Lights Generator**



### Sound Down Muffler



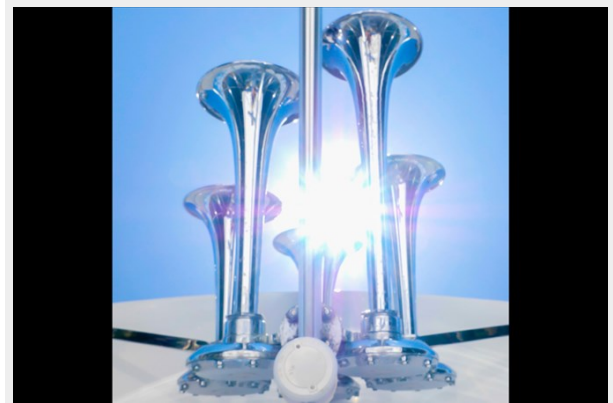
### Alternate Profile



### "Own an Icon"



### Kahlenberg 5 Trumpet Horn



### Mast



### "There Are Yachts and There Are Feadships"





# CONTACTS

---

Andrey Shestakov, leading yacht broker of the sales department of Shestakov Yacht Sales Inc. Shestakov Yacht Sales Inc., the official representative of the Miami/Fort Lauderdale FL headquarters.

## Contact details

---

Email: **andrey@shestakovyachtsales.com**

Web: [shestakovyachtsales.com/en/](https://shestakovyachtsales.com/en/)

## Telephones

---

USA: **+1(954)274-4435**

## Office hours

---

Monday – Saturday: **9:00 - 21:00** EDT

Sunday: **closed**

## Address

---



Harbour Towne Marina, 850 NE 3rd St, STE 213, Dania, FL 33004