

## FOUNTAIN 34 CC — FOUNTAIN



**Builder:** FOUNTAIN

**Year Built:** 2008

**Model:** center\_console

**Price:** \$140,000 USD

**Location:** United States

**LOA:** 34' (10.36mm)

**Beam:** 9.5

**Max Draft:** 2' 7" (0.79mm)

Our experienced yacht broker, Andrey Shestakov, will help you choose and buy a yacht that best suits your needs **Fountain 34 CC — FOUNTAIN** from **our catalogue**. Presently, at **Shestakov Yacht Sales Inc.**, we have a wide variety of yachts available on **our sale's list**. We also work in close contact with all the big **yacht manufacturers** from all over the world.

If you would like to buy a yacht **Fountain 34 CC — FOUNTAIN** or would like help answering any questions concerning purchasing, selling or chartering a yacht, please call **+1(954)274-4435**

# TABLE OF CONTENTS

TABLE OF CONTENTS	2
SPECIFICATIONS	5
Overview	5
Basic Information	6
Dimensions	6
Speed, Capacities and Weight	6
Hull and Deck Information	6
Engine Information	6
PHOTOS	7
9048954_20230918121911268_1_LARGE	7
9048954_20230918121917888_1_LARGE	7
9048954_20230918121927305_1_LARGE	7
9048954_20230918121924174_1_LARGE	7
9048954_20230918121931655_1_LARGE	7
9048954_20230918121935236_1_LARGE	7
9048954_20230918122001025_1_LARGE	8
9048954_20230918121942627_1_LARGE	8
9048954_20230918122005700_1_LARGE	8
9048954_20230918122009726_1_LARGE	8
9048954_20230918122013947_1_LARGE	8
9048954_20230918122016479_1_LARGE	8
9048954_20230918122019851_1_LARGE	9
9048954_20230918122024438_1_LARGE	9
9048954_20230918122034587_1_LARGE (1)	9
9048954_20230918122031634_1_LARGE	9
9048954_20230918122034587_1_LARGE	9
9048954_20230918122037671_1_LARGE	9
9048954_20230918122041495_1_LARGE	10

9048954_20230918122047682_1_LARGE	10
9048954_20230918122100829_1_LARGE	10
9048954_20230918122057856_1_LARGE	10
9048954_20230918122108140_1_LARGE	10
9048954_20230918122112189_1_LARGE	10
9048954_20230918122116948_1_LARGE	11
9048954_20230918122127224_1_LARGE	11
9048954_20230918122137971_1_LARGE	11
9048954_20230918122141785_1_LARGE	11
9048954_20230918122148631_1_LARGE	11
9048954_20230918122152513_1_LARGE	11
9048954_20230918122156798_1_LARGE	12
9048954_20230918122204093_1_LARGE	12
9048954_20230918122207908_1_LARGE	12
9048954_20230918122211628_1_LARGE	12
9048954_20230918122220038_1_LARGE	12
9048954_20230918122215959_1_LARGE	12
9048954_20230918122226289_1_LARGE	13
9048954_20230918122224021_1_LARGE	13
9048954_20230918122238180_1_LARGE	13
9048954_20230918122242571_1_LARGE	13
9048954_20230918122259482_1_LARGE	13
9048954_20230918122318393_1_LARGE	13
9048954_20230918122321204_1_LARGE	14
CONTACTS	15
Contact details	15
Telephones	15
Office hours	15
Address	15



---

# SPECIFICATIONS

---

## Overview

---

New Arrival: 2008 Fountain 34' CC powered with triple 2016 Mercury 350 Verados. Boat is always stored on a dry lift with cover. Call FYI Yachts today to schedule your showing.

### Highlights:

- Triple Mercury 350 Verados w/ 950 hrs
- Dual Garmin GPSMAP® 7612xsv
- Garmin Autopilot
- Garmin Radar
- ICOM VHF IC-M506
- Depth Finder
- Fish Finder
- Electric Trintabs
- Simpson Anchor Windlass
- Jarsco Searchlight Control
- SmartCraft RPM Gauges
- (2) Outriggers
- (2) Duralast Batteries
- Battery Charger
- Fusion Stereo
- JL Audio Sound System
- (4) Bow JL Audio Speakers
- (3) Cockpit JL Audio speakers
- Port & Starboard Rod Lockers
- Rod Holders
- Head
- Storage compartments
- In deck fish boxes
- Fresh & Raw Water Washdown
- Stainless Cleats

“Versatility” is the one catch-all word that best describes the legendary 34 CC. Yes, runaway top-end numbers give Fountain clear bragging rights, but construction quality and attention to detail are likewise key parts of our performance advantage. Fountain’s three-piece construction, fiberglass stringer grid, and composite cored hull sides won’t flex no matter what the sea conditions. Whether you opt for twins or triples, a long-range 418-gallon fuel capacity means more time on the water for family adventures and less time at the fuel pump.

---

## Basic Information

---

**Category:** center\_console

**Sub Category:** Center Console

**Model Year:** 2008

**Year Built:** 2008

**Country:** United States

---

## Dimensions

---

**LOA:** 34' (10.36mm)

**Beam:** 9.5

**Max Draft:** 2' 7" (0.79mm)

---

## Speed, Capacities and Weight

---

**Water Capacity:** 30 Gallons

**Fuel Capacity:** 300 Gal Gallons

---

## Hull and Deck Information

---

**Hull Material:** Fiberglass

---

## Engine Information

---

**Engines:** 3

**Manufacturer:** Mercury

**Engine Type:** Outboard

**Fuel Type:** Gas/Petrol

# PHOTOS

9048954\_20230918121911268\_1\_LARGE



9048954\_20230918121917888\_1\_LARGE



9048954\_20230918121924174\_1\_LARGE



9048954\_20230918121927305\_1\_LARGE



9048954\_20230918121931655\_1\_LARGE



9048954\_20230918121935236\_1\_LARGE



9048954\_20230918121942627\_1\_LARGE 9048954\_20230918122001025\_1\_LARGE



9048954\_20230918122005700\_1\_LARGE 9048954\_20230918122009726\_1\_LARGE



9048954\_20230918122013947\_1\_LARGE 9048954\_20230918122016479\_1\_LARGE





9048954\_20230918122019851\_1\_LARGE 9048954\_20230918122024438\_1\_LARGE



9048954\_20230918122031634\_1\_LARGE 9048954\_20230918122034587\_1\_LARGE (1)



9048954\_20230918122034587\_1\_LARGE 9048954\_20230918122037671\_1\_LARGE



9048954\_20230918122041495\_1\_LARGE 9048954\_20230918122047682\_1\_LARGE



9048954\_20230918122057856\_1\_LARGE 9048954\_20230918122100829\_1\_LARGE



9048954\_20230918122108140\_1\_LARGE 9048954\_20230918122112189\_1\_LARGE



9048954\_20230918122116948\_1\_LARGE 9048954\_20230918122127224\_1\_LARGE



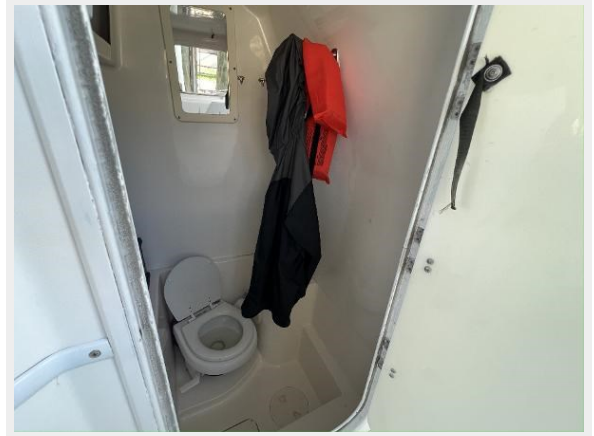
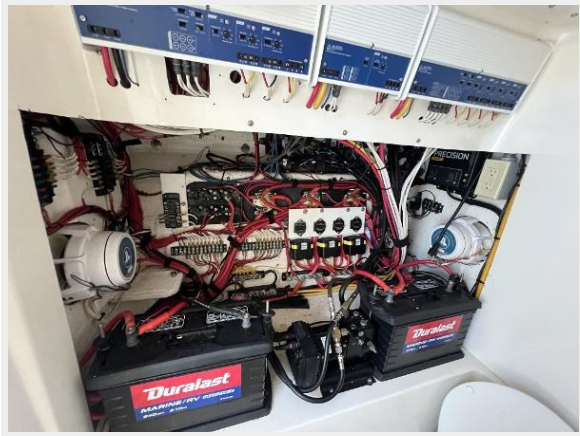
9048954\_20230918122137971\_1\_LARGE 9048954\_20230918122141785\_1\_LARGE



9048954\_20230918122148631\_1\_LARGE 9048954\_20230918122152513\_1\_LARGE



9048954\_20230918122156798\_1\_LARGE 9048954\_20230918122204093\_1\_LARGE



9048954\_20230918122207908\_1\_LARGE 9048954\_20230918122211628\_1\_LARGE



9048954\_20230918122215959\_1\_LARGE 9048954\_20230918122220038\_1\_LARGE



9048954\_20230918122224021\_1\_LARGE 9048954\_20230918122226289\_1\_LARGE



9048954\_20230918122238180\_1\_LARGE 9048954\_20230918122242571\_1\_LARGE



9048954\_20230918122259482\_1\_LARGE 9048954\_20230918122318393\_1\_LARGE



**9048954\_20230918122321204\_1\_LARGE**



# CONTACTS

---

Andrey Shestakov, leading yacht broker of the sales department of Shestakov Yacht Sales Inc. Shestakov Yacht Sales Inc., the official representative of the Miami/Fort Lauderdale FL headquarters.

## Contact details

---

Email: **andrey@shestakovyachtsales.com**

Web: [shestakovyachtsales.com/en/](http://shestakovyachtsales.com/en/)

## Telephones

---

USA: **+1(954)274-4435**

## Office hours

---

Monday - Saturday: **9:00 - 21:00** EDT

Sunday: **closed**

## Address

---



Harbour Towne Marina, 850 NE 3rd St, STE 213, Dania, FL 33004