

## REGINA BETH — SEA RAY



**Builder:** SEA RAY

**Year Built:** 1997

**Model:** Motor Yacht

**Price:** \$139,900 USD

**Location:** United States

**LOA:** 45' 6" (13.87mm)

**Beam:** 14.5

**Min Draft:** 3' 8" (1.1mm)

**Max Draft:** 4' 8" (1.4mm)

Our experienced yacht broker, Andrey Shestakov, will help you choose and buy a yacht that best suits your needs **Regina Beth — SEA RAY** from **our catalogue**. Presently, at **Shestakov Yacht Sales Inc.**, we have a wide variety of yachts available on **our sale's list**. We also work in close contact with all the big **yacht manufacturers** from all over the world.

If you would like to buy a yacht **Regina Beth — SEA RAY** or would like help answering any questions concerning purchasing, selling or chartering a yacht, please call **+1(954)274-4435**

---

# TABLE OF CONTENTS

---

TABLE OF CONTENTS	2
SPECIFICATIONS	4
Overview	4
Basic Information	4
Dimensions	4
Speed, Capacities and Weight	5
Accommodations	5
Hull and Deck Information	5
Engine Information	5
PHOTOS	6
IMG_1504	6
IMG_1503	6
IMG_1502	6
IMG_1501	6
IMG_1500	6
IMG_1499	6
IMG_1498	7
IMG_1497	7
IMG_1496	7
IMG_1494	7
IMG_1493	7
IMG_1491	7
IMG_1490	8
IMG_1489	8
IMG_1488	8
IMG_1487	8
IMG_1486	8
IMG_1485	8

---

IMG_1484	9
IMG_1483	9
IMG_1482	9
IMG_1481	9
IMG_1480	9
IMG_1479	9
IMG_1478	10
IMG_1478	10
IMG_1477	10
IMG_1477	10
IMG_1476	11
CONTACTS	12
Contact details	12
Telephones	12
Office hours	12
Address	12

# SPECIFICATIONS

---

## Overview

---

The Sea Ray 450 Sundancer is custom designed and built for yachtsmen who enjoy serious cruising in unabashed comfort. She has the characteristic accommodations of the Sundancer layout and the long-range performance of twin 450 hp Caterpillar engines. The custom slide - swivel captain's chair has an adjacent Euro-styled companion seat. The cockpit provides wonderful space for relaxing, with a spacious circular aft-facing seat, U-shaped seating, and Euro cockpit tables.. If water toys are a part of the game plan, the 450 Sundancer has plenty of room for storing them. The oversize integral swim platform is large enough to hold a personal watercraft, while the aft wall fender storage neatly organizes docking equipment. The standard Lofrans Progress I rope - chain windlass makes anchoring easy. Four lockable translucent deck hatches with screen covers, sliding windows and ten opening port lights provide natural light and fresh air throughout the cabin on mild days. Other days, you may opt to run the central heating or air conditioning. Belowdecks deep-pile marine carpet lines a spacious interior. In the salon, a sleeper sofa, dining table, and entertainment center provide respite from the activity topsides. Amidships, the Sundancer berth functions as a conversation area by day and, by night, sleeping quarters for two in the double berth. The midships guest head has a VacuFlush toilet, vanity with sink, and fiberglass shower stall with curtain. The private master stateroom has a full-size bed with storage underneath, hanging lockers with mirrored doors. The master head features a VacuFlush toilet, vanity with sink and mirrored medicine cabinet, and fiberglass shower stall with circular acrylic door. It's accessible from the salon or master stateroom. Faux-granite countertops highlight the full galley, with refrigerator - freezer, three-burner electric stove, and microwave.

## Basic Information

---

**Category:** Motor Yacht

**Model Year:** 1997

**Year Built:** 1997

**Country:** United States

## Dimensions

---

**LOA:** 45' 6" (13.87mm)

**Beam:** 14.5

**Min Draft:** 3' 8" (1.1mm)

**Max Draft:** 4' 8" (1.4mm)

---

## Speed, Capacities and Weight

---

**Gross Tonnage:** 26 Pounds

**Water Capacity:** 150 Gallons

**Holding Tank:** 60 Gal Gallons

**Fuel Capacity:** 400 Gal Gallons

---

## Accommodations

---

**Total Cabins:** 2

**Total Heads:** 2

---

## Hull and Deck Information

---

**Hull Material:** Fiberglass

**Deck Material:** Fiberglass

**Hull Configuration:** Monohull

**Hull Designer:** Sea Ray

**Interior Designer:** Sea Ray

---

## Engine Information

---

**Engines:** 2

**Manufacturer:** Caterpillar

**Fuel Type:** Diesel

# PHOTOS

**IMG\_1504**



**IMG\_1503**



**IMG\_1502**



**IMG\_1501**



**IMG\_1500**



**IMG\_1499**



IMG\_1498



IMG\_1497



IMG\_1496



IMG\_1494



IMG\_1493



IMG\_1491



IMG\_1490



IMG\_1489



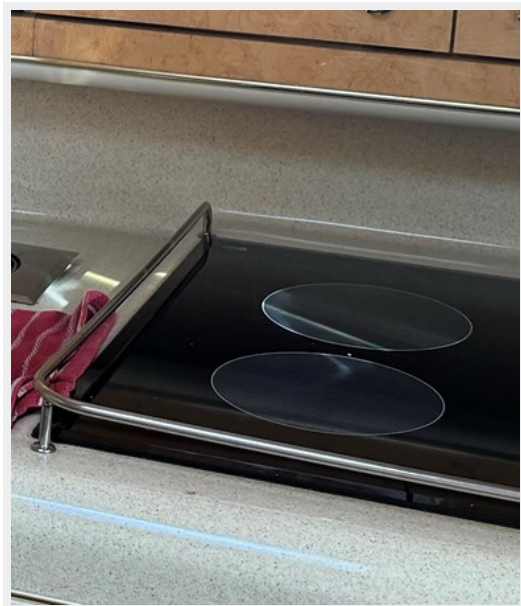
IMG\_1488



IMG\_1487



IMG\_1486



IMG\_1485





**IMG\_1484**



**IMG\_1483**



**IMG\_1482**



**IMG\_1481**



**IMG\_1480**



**IMG\_1479**



IMG\_1478



IMG\_1478



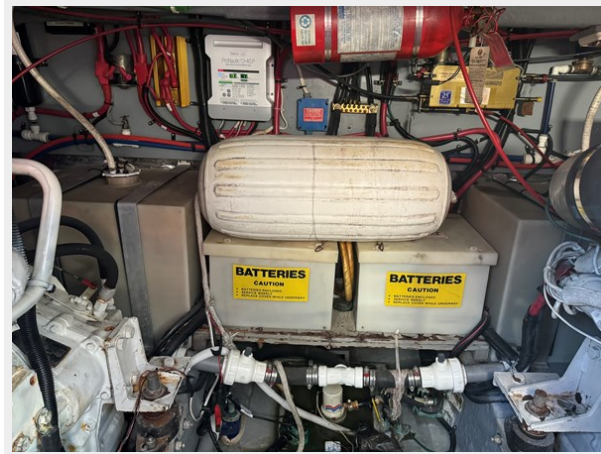
IMG\_1477



IMG\_1477



IMG\_1476



# CONTACTS

---

Andrey Shestakov, leading yacht broker of the sales department of Shestakov Yacht Sales Inc. Shestakov Yacht Sales Inc., the official representative of the Miami/Fort Lauderdale FL headquarters.

## Contact details

---

Email: **andrey@shestakovyachtsales.com**

Web: [shestakovyachtsales.com/en/](https://shestakovyachtsales.com/en/)

## Telephones

---

USA: **+1(954)274-4435**

## Office hours

---

Monday – Saturday: **9:00 - 21:00** EDT

Sunday: **closed**

## Address

---



Harbour Towne Marina, 850 NE 3rd St, STE 213, Dania, FL 33004