

MAVERICK — ADMIRAL



Builder: ADMIRAL

Year Built: 2013

Model: Motor Yacht

Price: €11,900,000 EUR

Location: United States

LOA: 130' (39.62mm)

Beam: 27.75

Max Draft: 8' 6" (2.56mm)

Cruise Speed: 14 Knots Kts. (16 MPH)

Max Speed: 20 Knots Kts. (23 MPH)

Our experienced yacht broker, Andrey Shestakov, will help you choose and buy a yacht that best suits your needs **MAVERICK — ADMIRAL** from **our catalogue**. Presently, at **Shestakov Yacht Sales Inc.**, we have a wide variety of yachts available on **our sale's list**. We also work in close contact with all the big **yacht manufacturers** from all over the world.

If you would like to buy a yacht **MAVERICK — ADMIRAL** or would like help answering any questions concerning purchasing, selling or chartering a yacht, please call **+1(954)274-4435**

TABLE OF CONTENTS

| | |
|------------------------------|----|
| TABLE OF CONTENTS | 2 |
| SPECIFICATIONS | 3 |
| Overview | 3 |
| Basic Information | 3 |
| Dimensions | 3 |
| Speed, Capacities and Weight | 3 |
| Accommodations | 4 |
| Hull and Deck Information | 4 |
| Engine Information | 4 |
| PHOTOS | 5 |
| CONTACTS | 12 |
| Contact details | 12 |
| Telephones | 12 |
| Office hours | 12 |
| Address | 12 |

SPECIFICATIONS

Overview

Launched in 2013, MAVERICK is a multi-award winning 130' (39.62m) motor yacht built by Italian shipyard Admiral Yachts. She was the first in the yard's Admiral Impero 40 series, built with aluminum hull and superstructure by the Italian Sea Group to a design by Luca Dini. MAVERICK features accommodations for up to 11 guests in 5 cabins consisting of a master suite with a study, three double cabins and one twin cabin, all with LED television screens, entertainment centers and en-suite bathroom facilities. Twin MTU 12V 2000 M94 diesel engines give this 479GT yacht a cruising speed of 14 knots, top speed of 20 knots and a range of 4,950 nautical miles at 10 knots. With expansive outdoor spaces, a sleek interior, and stabilizers for optimal comfort at sea or anchor, MAVERICK is a proven charter performer and a fantastic opportunity for discerning yacht owners.

Basic Information

Category: Motor Yacht

Model Year: 2013

Year Built: 2013

Country: United States

Dimensions

LOA: 130' (39.62mm)

Beam: 27.75

Max Draft: 8' 6" (2.56mm)

Speed, Capacities and Weight

Cruise Speed: 14 Knots Kts. (16 MPH) **Max Speed:** 20 Knots Kts. (23 MPH)

Gross Tonnage: 479 Pounds

Water Capacity: 2368 Gallons

Fuel Capacity: 13473 Gal Gallons

Accommodations

Total Cabins: 5

Sleeps: 11

Crew Cabin: 9

Hull and Deck Information

Hull Material: Aluminum

Deck Material: Teak

Hull Configuration: Semi-Displacement **Exterior Designer:** LUCA DINI Design & Architecture

Interior Designer: Admiral

Engine Information

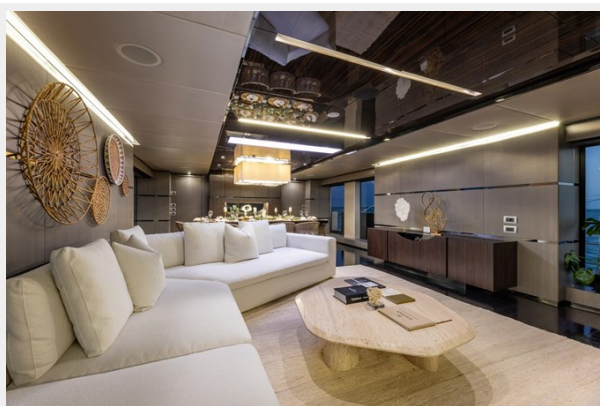
Engines: 2

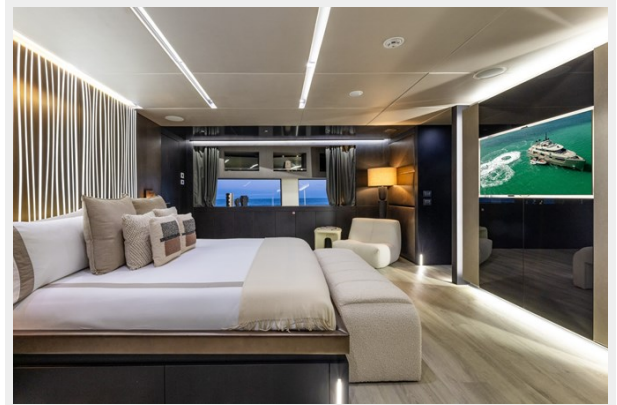
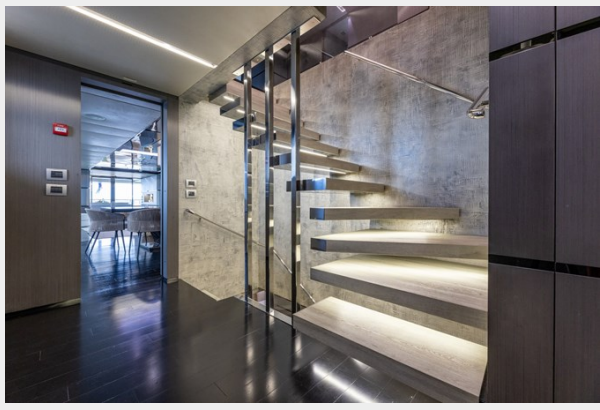
Manufacturer: MTU

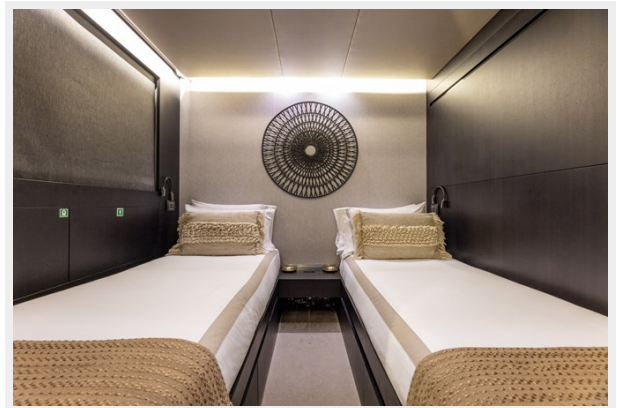
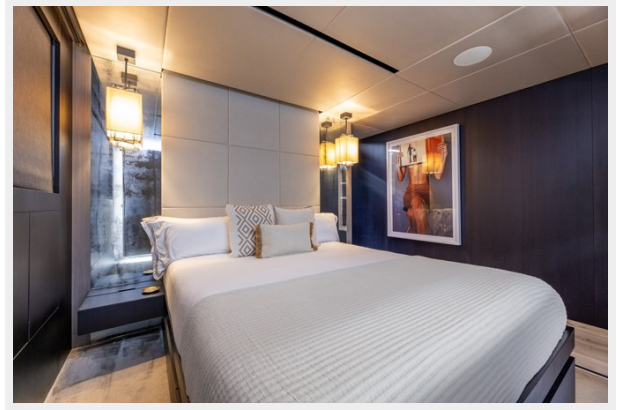
Engine Type: Inboard

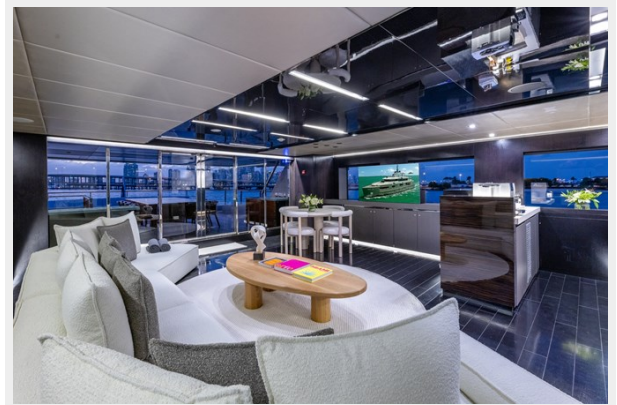
Fuel Type: Diesel

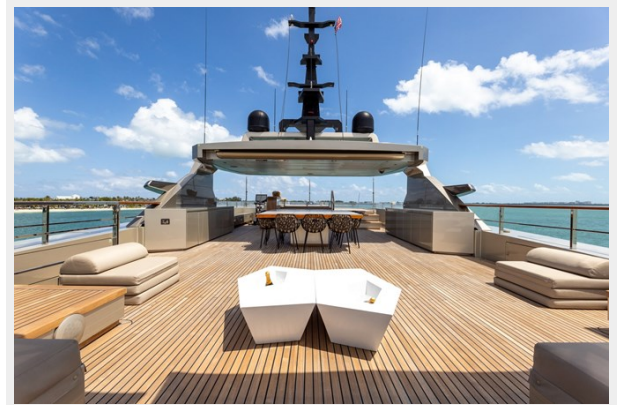
PHOTOS



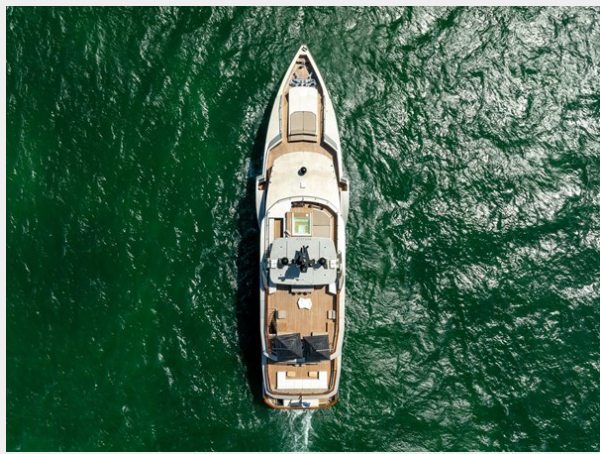












CONTACTS

Andrey Shestakov, leading yacht broker of the sales department of Shestakov Yacht Sales Inc. Shestakov Yacht Sales Inc., the official representative of the Miami/Fort Lauderdale FL headquarters.

Contact details

Email: **andrey@shestakovyachtsales.com**

Web: shestakovyachtsales.com/en/

Telephones

USA: **+1(954)274-4435**

Office hours

Monday – Saturday: **9:00 - 21:00** EDT

Sunday: **closed**

Address



Harbour Towne Marina, 850 NE 3rd St, STE 213, Dania, FL 33004