

SOLEMATES — MULDER SHIPYARD



Builder: MULDER SHIPYARD

Year Built: 2022

Model: Raised Pilothouse

Price: €22,000,000 EUR

Location: United States

LOA: 118' 2" (36mm)

Beam: 26.24

Max Draft: 6' 11" (2.1mm)

Cruise Speed: 15 Knots Kts. (17 MPH)

Max Speed: 16 Knots Kts. (18 MPH)

Our experienced yacht broker, Andrey Shestakov, will help you choose and buy a yacht that best suits your needs **Solemates — MULDER SHIPYARD** from **our catalogue**. Presently, at **Shestakov Yacht Sales Inc.**, we have a wide variety of yachts available on **our sale's list**. We also work in close contact with all the big **yacht manufacturers** from all over the world.

If you would like to buy a yacht **Solemates — MULDER SHIPYARD** or would like help answering any questions concerning purchasing, selling or chartering a yacht, please call **+1(954)274-4435**

TABLE OF CONTENTS

TABLE OF CONTENTS	2
SPECIFICATIONS	4
Overview	4
Basic Information	4
Dimensions	4
Speed, Capacities and Weight	4
Accommodations	5
Hull and Deck Information	5
Engine Information	5
PHOTOS	6
Bar	6
Salon	6
Bar 2	6
Dining room	6
Dining view to port	6
Master cabin	6
Master office	7
Master bathroom	7
Master cabin 2	7
Port forward guest cabin twin config	7
Stb. forward guest cabin	7
Port aft guest cabin	7
Jacuzzi bar	8
Sundeck dining	8
Sundeck seating	8
Sundeck	8
Foredeck	8
Sundeck 2	8

Sunpads	9
Wheelhouse	9
127-Mulder-Solemates-exterior-12	9
CONTACTS	10
Contact details	10
Telephones	10
Office hours	10
Address	10

SPECIFICATIONS

Overview

Experience luxury and performance aboard this stunning **2022 Mulder 36m** yacht. Built with an aluminum hull for exceptional efficiency and equipped with twin Caterpillar engines, this is hull#5 in the very successful Mulder 36m series. Accommodating up to **10 guests** in 5 elegant cabins, including a full-beam master suite, this vessel is the epitome of sophistication. Enjoy spacious outdoor areas, a sun deck with a Jacuzzi, a beach club, and modern amenities throughout. Perfect for long-range cruising or charter.

Unique to this series, Solemates is equipped with both zero speed fins and gyro stabilizers for the ultimate in stability and comfort.

Basic Information

Category: Raised Pilothouse

Sub Category: Raised Pilothouse

Model Year: 2022

Year Built: 2022

Country: United States

Dimensions

LOA: 118' 2" (36mm)

Beam: 26.24

Max Draft: 6' 11" (2.1mm)

Speed, Capacities and Weight

Cruise Speed: 15 Knots Kts. (17 MPH) **Max Speed:** 16 Knots Kts. (18 MPH)

Gross Tonnage: 296 Pounds

Water Capacity: 5700 Gallons

Holding Tank: 686.85 Gal Gallons

Fuel Capacity: 7555.32 Gal Gallons

Accommodations

Total Cabins: 5

Sleeps: 10

Total Heads: 7

Crew Cabin: 6

Crew Berths: 6

Crew Heads: 3

Hull and Deck Information

Hull Material: Aluminum

Deck Material: Teak

Hull Configuration: Fast Displacement
Hull

Hull Color: Medium Grey and White

Hull Designer: Van Oossanen

Engine Information

Engines: 2

Manufacturer: Caterpillar

Engine Type: Inboard

Fuel Type: Diesel

PHOTOS

Salon



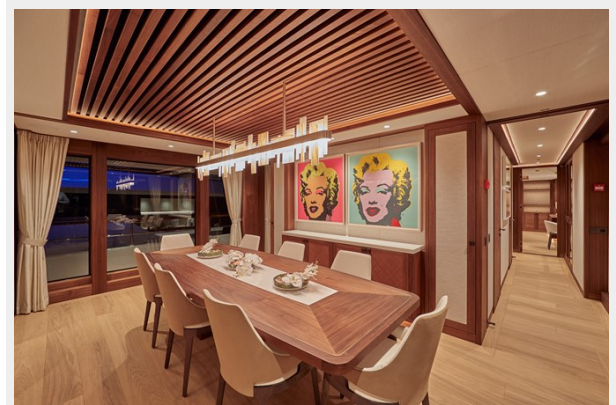
Bar



Bar 2



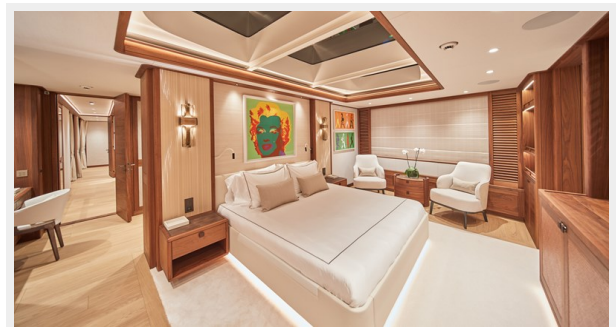
Dining room



Dining view to port



Master cabin



Master office



Master bathroom



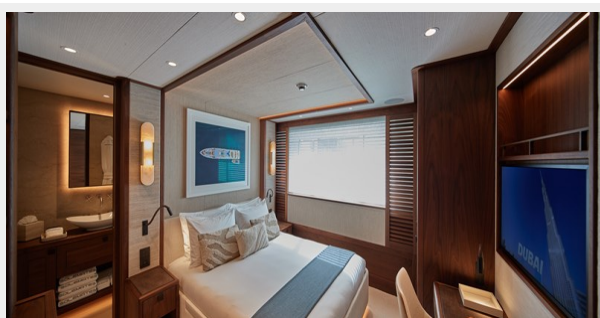
Master cabin 2



Port forward guest cabin twin config



Port aft guest cabin



Stb. forward guest cabin



Jacuzzi bar



Sundeck dining



Sundeck seating



Sundeck



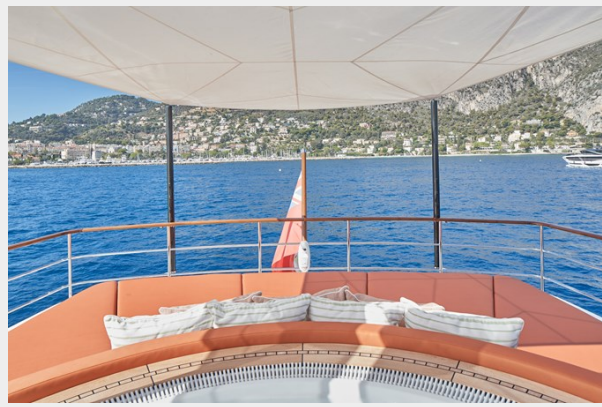
Sundeck 2



Foredeck



Sunpads



Wheelhouse



127-Mulder-Solemates-exterior-12



CONTACTS

Andrey Shestakov, leading yacht broker of the sales department of Shestakov Yacht Sales Inc. Shestakov Yacht Sales Inc., the official representative of the Miami/Fort Lauderdale FL headquarters.

Contact details

Email: **andrey@shestakovyachtsales.com**

Web: shestakovyachtsales.com/en/

Telephones

USA: **+1(954)274-4435**

Office hours

Monday – Saturday: **9:00 - 21:00** EDT

Sunday: **closed**

Address



Harbour Towne Marina, 850 NE 3rd St, STE 213, Dania, FL 33004