

2021 FAIRLINE SQUADRON 68 — FAIRLINE



Судостроитель: FAIRLINE

Год постройки: 2021

Модель: Моторная яхта

Цена: \$2,890,000 USD

Местонахождение: United States

Длина общая: 68' (20.73m)

Ширина: 18.41

Купить **2021 Fairline Squadron 68 — FAIRLINE** а также выбрать подходящую вам яхту из нашего **каталога яхт** вам поможет опытный яхтенный брокер Андрей Шестаков. На сегодняшний день компания **Shestakov Yacht Sales Inc.** имеет большое количество яхт в **собственном списке продаж**, а также тесно сотрудничает со всеми крупными **яхтенными производителями** по всему миру.

Для того чтобы купить яхту **2021 Fairline Squadron 68 — FAIRLINE** а также проконсультироваться по любому вопросу связанному с покупкой, продажей, чартером яхт позвоните по телефону **+7(918)465-66-44**.

ОГЛАВЛЕНИЕ

ОГЛАВЛЕНИЕ	2
ХАРАКТЕРИСТИКИ	6
Обзор	6
Основная информация	8
Размеры	8
Скорость, вместимость и масса	8
Размещение	8
Корпус и палуба	9
Информация о двигателе	9
ФОТОГРАФИИ	10
2	10
3	10
4	10
5	10
6	10
7	10
8	11
9	11
10	11
11	11
12	11
13	11
14	12
15	12
17	12
16	12
18	12
19	12

21	13
20	13
22	13
23	13
25	13
24	13
26	14
27	14
28	14
29	14
30	14
31	14
32	15
33	15
34	15
35	15
36	15
37	15
38	16
39	16
40	16
41	16
42	16
43	16
44	17
45	17
46	17
47	17
48	17

49	17
50	18
51	18
52	18
53	18
54	18
55	18
56	19
57	19
59	19
58	19
60	20
61	20
62	20
63	20
64	21
65	21
67	21
66	21
68	22
69	22
70	22
80	22
81	22
82	22
83	23
84	23
85	23
86	23

88	24
87	24
89	24
90	24
92	25
93	25
95	25
94	25
100	26
96	26
101	26
961	26
КОНТАКТЫ	27
Контактная информация	27
Телефоны	27
Время работы	27
Адрес	27

ХАРАКТЕРИСТИКИ

Обзор

The 2021 Fairline Squadron offers the perfect combination of luxury and performance. Built for day or long-distance cruising, the vessel is powered by CAT C18-115 engines, known for their power density and torque. The Caterpillar engines are paired with ZF controls on both the flybridge and main helms. Garmin navigation screens and Bow and Stern thrusters with proportional controls, make the maneuverability of this yacht exceptional.

The extraordinary performance of this yacht is complimented by its luxurious appointments and finishes. The flybridge area is large and spacious. Features include a retractable sunroof, multiple seating areas, large dining area with bench seating, a wet bar with sink, grill, Isotherm refrigerator and ice maker. The Bang and Olufsen sound system completes the package making the flybridge of this vessel the perfect space to entertain.

The aft deck of Raw Wave showcases the yachts second eating and entertaining area. The deck includes a large, covered dining area, sliding glass doors that open starboard and retract/lower port, allowing easy access to the standing drink bar, galley area and main salon. The retractable doors completely connect the aft deck and main salon spaces, making transition from inside to out seamless.

Inside, the main salon exudes both functionality and luxury. The vessel is open, contemporary and modern. Interior floors are hardwood. High gloss walnut wood details and cabinetry compliment the panoramic windows to create a stunning living area. The galley is located aft and adjoins the exterior aft deck when the glass sliding doors are opened/retracted. Fitted with white quartz countertops, top of the line Miele appliances, a full-size refrigerator, microwave/convection oven, cooktop and dishwasher, the galley ensures effortless food preparation and entertaining. Forward of the galley, is a large custom dining table with polished chrome legs and seating for six. A white leather sofa, separate loveseat and large entertainment center with a Samsung television complete the main salon. Forward and starboard is the lower helm, with triple Garmin screens, ZF throttles, and proportional bow and stern thrusters.

Descend to the lower level of the yacht via a contemporary open staircase. There, the

staterooms are spacious and well appointed. The center hallway also houses the combination washer/dryer.

The Master cabin is located on the lower level aft. It features a striking custom headboard that combines elements of high gloss wood, mirror, and white lacquer. The ceiling is white and incorporates decorative components of both wood and chrome; carpeting is plush and white. The owner's stateroom includes a king bed, built-in dresser with significant storage areas, large windows, decorative polished chrome lamps, nightstands, reading lights, separate desk/dressing area with stone counters, seating area, two closets, a safe and ensuite bath suite.

The VIP cabin is forward and includes a raised queen bed, high gloss wood detailing complimented by polished chrome accents, upper storage cabinets, skylights, two hanging closets, a full-sized dressing mirror, television and large windows. The ensuite bath with marble floors and counters, glass walk in shower, rectangular window, mirrored cabinet with storage, above counter sink and under sink storage.

The starboard guest cabin features a full-size bed, television, large window, dressing mirror and hanging closet. The starboard stateroom connects to an ensuite bath. Twin cabin is to port and fitted with above/below twin beds, window and spacious closet.

Other notable and upgrades features:

- CAT C18-115 engines,
- ZF controls,
- Bow and Stern thrusters,
- Garmin navigation screens on flybridge and lower helm,
- Hydraulic swim platform with beach package and shower,
- Retractable sliding glass doors connecting aft deck and main salon,
- Flybridge wet bar,
- Standing bar on main aft deck,
- Modern interior finishes -including hardwood floors, white upholstery and polished chrome accents,
- Contemporary and open design,
- Glass display and storage cabinet,
- 4 staterooms with 3 ensuite baths,
- Master cabin with custom headboard, surround sound, built in dresser, desk,

seating area, large closets, safe and ensuite bath,

- Crew quarters with 2 twin beds and head,
- Indoor and outdoor entertaining areas,
- Autopilot, GPS, Radar, Depth Finder,
- Cummins Onan Generator,
- Underwater lights,
- Exterior lights,
- Drink holder on exterior tables,
- Water maker (AquaPrime),
- Phoenix Inverter,
- Exterior storage and beverage space.

Schedule your showing today!

Основная информация

Тип судна: Моторная яхта

Модельный год: 2021

Год постройки: 2021

Страна: United States

Размеры

Длина общая: 68' (20.73mm)

Ширина: 18.41

Скорость, вместимость и масса

Вместимость воды: 237 Gallons

Объем топливного бака: 1029 Gal
Gallons

Размещение

Всего кают: 4

Всего ком. состава: 3

Койки экипажа: 1

Комм. состав экипажа: 1

Корпус и палуба

Материал корпуса: Fiberglass

Информация о двигателе

Двигатели: 2

Производитель: CAT

Тип двигателя: Inboard

Тип топлива: Diesel

ФОТОГРАФИИ

2



3



4



5



6



7



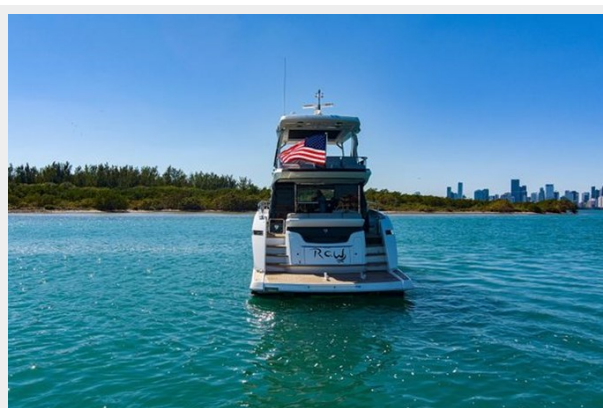
8



9



10



11



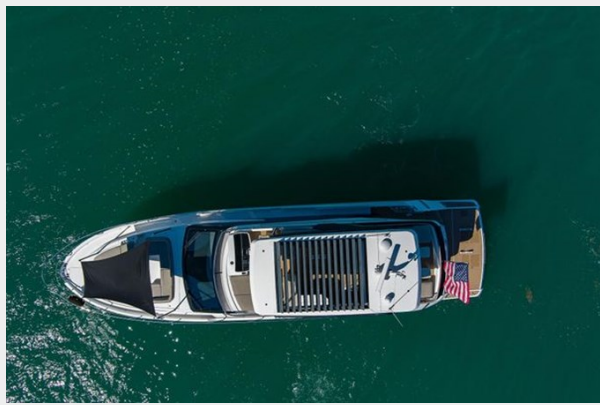
12



13



14



15



17



16



18



19



20



21



22



23



24



25



26



27



28



29



30



31



32



33



34



35



36



37



38



39



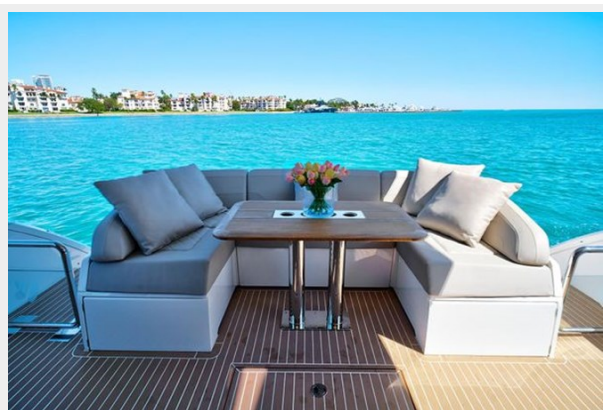
40



41



42



43



44



45



46



47



48



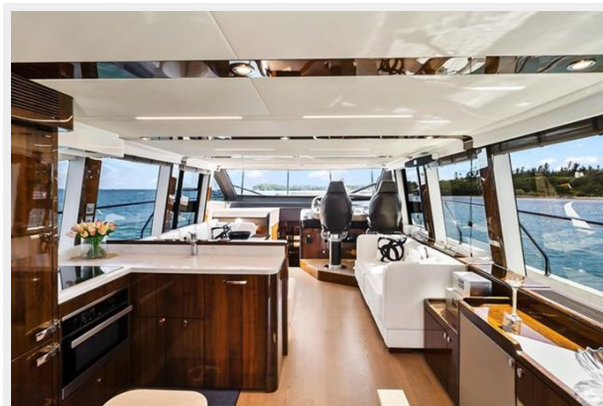
49



50



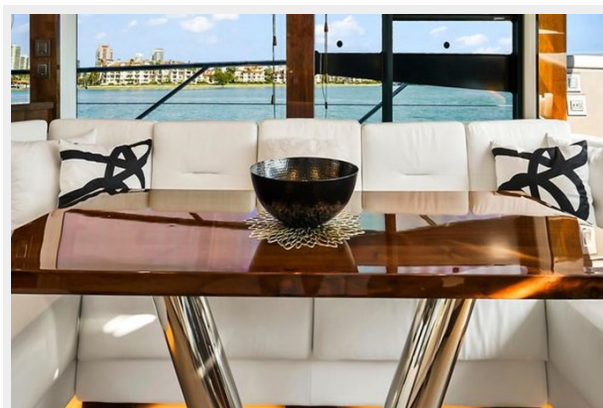
51



52



53



54



55



56



57



59



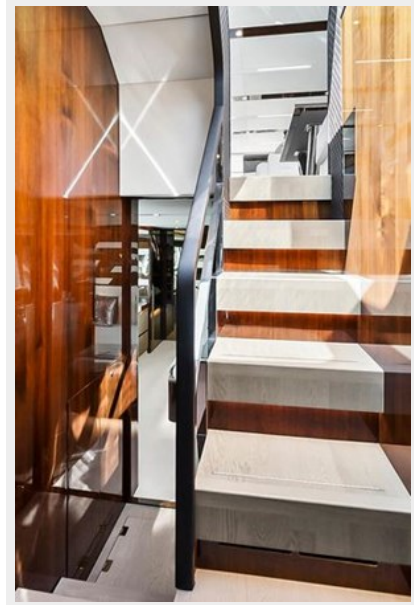
58



60



61



62



63



64



65



66



67



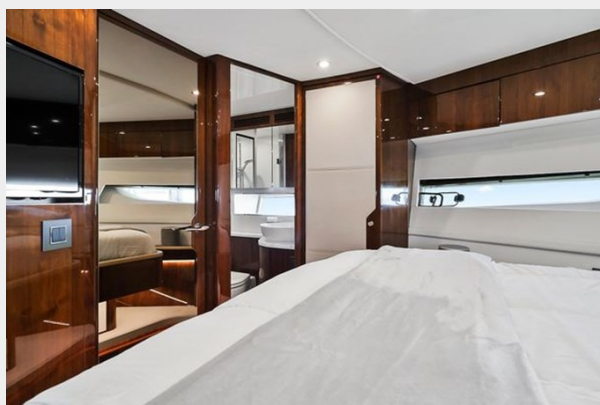
68



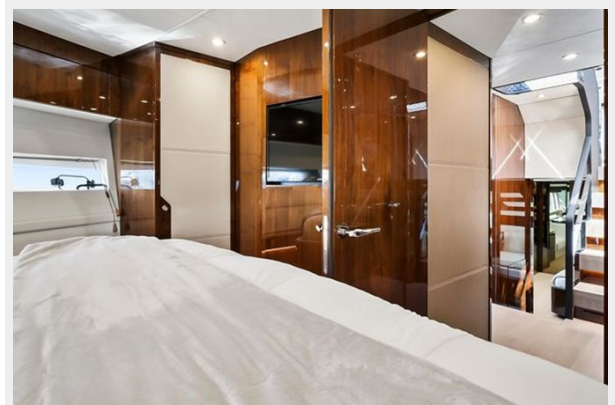
69



70



80



81



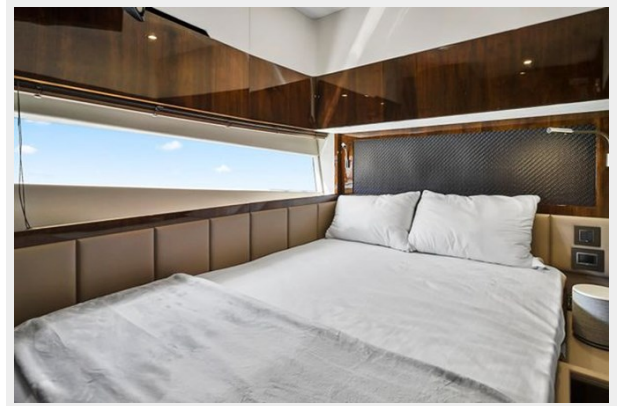
82



83



84



85



86



87



88



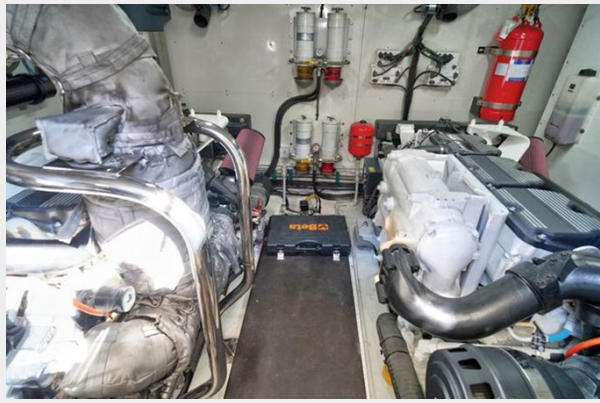
89



90



92



93



95



94



96



100



101



961



КОНТАКТЫ

Андрей Шестаков (Andrey Shestakov) – ведущий яхтенный брокер отдела продаж яхт и судов компании Shestakov Yacht Sales Inc. Официальный представитель Shestakov Yacht Sales Inc. для русскоговорящих клиентов в центральном офисе компании в Майами/Форт Лодердейл/Флорида/США.

Контактная информация

Email: **andrey@shestakovyachtsales.com**

Web: shestakovyachtsales.com

Телефоны

Краснодарский край: **+7(918)465-66-44**

США, Майами, Флорида: **+1(954)274-4435**

Время работы

Понедельник – Суббота: **9:00 - 21:00** EDT

Воскресенье: **Закрето**

Адрес



Harbour Towne Marina, 850 NE 3rd St, STE 213, Dania, FL 33004