

END GAME — PRINCESS



Builder: PRINCESS

Year Built: 2021

Model: Motor Yacht

Price: \$2,195,000 USD

Location: United States

LOA: 62' 1" (18.92mm)

Beam: 16.5

Min Draft: 4' 10" (1.47mm)

Our experienced yacht broker, Andrey Shestakov, will help you choose and buy a yacht that best suits your needs **End Game — PRINCESS** from **our catalogue**. Presently, at **Shestakov Yacht Sales Inc.**, we have a wide variety of yachts available on **our sale's list**. We also work in close contact with all the big **yacht manufacturers** from all over the world.

If you would like to buy a yacht **End Game — PRINCESS** or would like help answering any questions concerning purchasing, selling or chartering a yacht, please call **+1(954)274-4435**

TABLE OF CONTENTS

TABLE OF CONTENTS	2
SPECIFICATIONS	10
Overview	10
Basic Information	13
Dimensions	13
Speed, Capacities and Weight	13
Accommodations	13
Hull and Deck Information	14
Engine Information	14
PHOTOS	15
DJI_20240807113940_0757_D	15
DJI_20240807113947_0759_D	15
DJI_20240807113952_0761_D	15
DJI_20240807113958_0765_D	15
DJI_20240807114000_0766_D	15
DJI_20240807114016_0769_D	15
DJI_20240807114023_0772_D	16
DJI_20240807114025_0773_D	16
DJI_20240807114029_0774_D	16
DJI_20240807114033_0776_D	16
DJI_20240807114036_0778_D	16
DJI_20240807114037_0779_D	16
DJI_20240807114051_0782_D	16
DJI_20240807114257_0789_D	16
DJI_20240807114301_0792_D	17
DJI_20240807114334_0797_D	17
DJI_20240807114402_0803_D	17
DJI_20240807114406_0805_D	17

DJI_20240807114436_0809_D	17
DJI_20240807114441_0812_D	17
DJI_20240807114446_0815_D	17
DJI_20240807114449_0817_D	17
DJI_20240807114515_0819_D	18
DJI_20240807114559_0825_D	18
DJI_20240807114607_0829_D	18
DJI_20240807114611_0831_D	18
DJI_20240807114612_0832_D	18
DJI_20240807114647_0836_D	18
DJI_20240807114703_0838_D	18
DJI_20240807114733_0841_D	18
DJI_20240807114815_0847_D	19
DJI_20240807114943_0852_D	19
DJI_20240807114950_0856_D	19
DJI_20240807114952_0857_D	19
DJI_20240807115001_0860_D	19
DJI_20240807115003_0861_D	19
DJI_20240807115034_0864_D	19
DJI_20240807115218_0868_D	19
DJI_20240807115225_0872_D	20
DJI_20240807115433_0877_D	20
DSC04914	20
DJI_20240807115529_0883_D	20
DSC04916	20
DSC04917	20
DSC04918	21
DSC04919	21
DSC04920	21

DSC04921	21
DSC04922	21
DSC04923	21
DSC04924	22
DSC04925	22
DSC04926	22
DSC05775-Enhanced-NR	22
DSC05776-HDR	22
DSC05778-Enhanced-NR	22
DSC05779-Enhanced-NR	23
DSC05780	23
DSC05781-Enhanced-NR	23
DSC05782-Enhanced-NR	23
DSC05783-Enhanced-NR	23
DSC05784-Enhanced-NR	23
DSC05785-Enhanced-NR	24
DSC05786-Enhanced-NR	24
DSC05788	24
DSC05787	24
DSC05789	24
DSC05790-Enhanced-NR	24
DSC05791-Enhanced-NR	25
DSC05792-Enhanced-NR	25
DSC05793	25
DSC05794	25
DSC05795	25
DSC05796	25
DSC05799	26
DSC05798	26

DSC05800-Enhanced-NR	26
DSC05801-Enhanced-NR	26
DSC05802	26
DSC05803-Enhanced-NR	26
DSC05804-Enhanced-NR	27
DSC05805-Enhanced-NR	27
DSC05806-Enhanced-NR	27
DSC05807	27
DSC05808	27
DSC05809-Enhanced-NR	27
DSC05810-Enhanced-NR	28
DSC05811	28
DSC05812-Enhanced-NR	28
DSC05813	28
DSC05814	28
DSC05815	28
DSC05816-Enhanced-NR	29
DSC05817	29
DSC05818	29
DSC05819	29
DSC05820	29
DSC05821	29
DSC05822	30
DSC05823	30
DSC05824	30
DSC05825	30
DSC05826	30
DSC05827	30
DSC05828	31

DSC05829	31
DSC05831	31
DSC05832	31
DSC05833	31
DSC05834	31
DSC05835	32
DSC05836	32
DSC05837	32
DSC05839	32
DSC05840	32
DSC05842	32
DSC05843	33
DSC05844	33
DSC05845	33
DSC05846	33
DSC05847	33
DSC05848	33
DSC05849	34
DSC05850	34
DSC05851	34
DSC05852	34
DSC05853	34
DSC05854	34
DSC05855	35
DSC05856	35
DSC05857	35
DSC05858-Enhanced-NR	35
DSC05859-Enhanced-NR	35
DSC05860-Enhanced-NR	35

DSC05861	36
DSC05862-Enhanced-NR	36
DSC05863	36
DSC05865	36
DSC05866	36
DSC05867-Enhanced-NR	36
DSC05868	37
DSC05869	37
DSC05870	37
DSC05871-Enhanced-NR	37
DSC05872-Enhanced-NR	37
DSC05873	37
DSC05874	38
DSC05876	38
DSC05877	38
DSC05878	38
DSC05879	38
DSC05880	38
DSC05881	39
DSC05882	39
DSC05883	39
DSC05884	39
DSC05886	39
DSC05887	39
DSC05888	40
DSC05889	40
DSC05890	40
DSC05891	40
DSC05892	40

DSC05893	40
DSC05894	41
DSC05895	41
DSC05897	41
DSC05898	41
DSC05901	41
DSC05903	41
DSC05904	42
DSC05905	42
DSC05906	42
DSC05907	42
DSC05909	42
DSC05910	42
DSC05911	43
DSC05912	43
DSC05913	43
DSC05914	43
DSC05915	43
DSC05916	43
DSC05917	44
DSC05918	44
DSC05919	44
DSC05920	44
DSC05921	44
DSC05922	44
DSC05923	45
DSC05924	45
DSC05925	45
DSC05926	45

DSC05927	45
DSC05928	45
DSC05929	46
DSC05930-Enhanced-NR	46
DSC05931	46
DSC05932	46
CONTACTS	47
Contact details	47
Telephones	47
Office hours	47
Address	47

SPECIFICATIONS

Overview

Step aboard the aesthetically pleasing yet extremely functional S62 Princess and feel the oasis of the sea take you to your happy place. This vessel is truly turn key and ready to cruise.

With this low hour MAN V8 1200s she sure has many memories left to provide. The optional Allure collection takes this boat to another level with upgrades to the interior and exterior styling, as well as improvement in lighting and teak work to improve your enjoyment on board.

Loads of additional options should make this the first S62 on your list, including the following:

- MAN Extended Engine Warranty
- Cummins ONAN Generator Extended Warranty
- Seakeeper Extended Warranty
- 400 Hour Engine Service - August 2024
- Bottom Paint - August 2024
- Prop Speed - August 2024
- Starlink Satellite System
- Engine Room and Security Cameras
- Vessel Owned in an LLC
- Just Completed Annual Yard Service - August 2024
- Exterior/Interior Engine Room Detail - August 2024
- Seakeeper #9 Anti-Roll Gyro-Stabilizer
- JL Audio Upgrades
- ElectroSea Water Purification
- 4x Lumishore Underwater Lights
- Garmin Electronics 2X 8616 Upper & Lower Helm
- Garmin GHC -20 Auto Pilot
- Garmin GHS 11 VHF Upper & Lower Helm
- Garmin GMI -20 Depth Display Upper & Lower Helm
- Garmin 72 Mile Radar
- VHF Hailer
- Flip up arm rest lower helm
- 2021 Williams 345 Jet Tender
- Tender Garage
- Gloss Walnut Interior
- V Groove galley floor
- Allure Collection
- 3 Stateroom 2 Head Layout

- Starboard S/R power sliding berth
- Salon refrigerator & ice maker
- Sportbridge
- 3rd Station for Docking
- Electric Aft Sunshade
- Electro-hydraulic Bimini
- Flybridge Teak decking
- Cockpit Teak decking
- Exterior canvas covers
- Quickstep boarding step

Manufacturer Provided Description Powerful yet elegant, the new S62's sleek exterior styling presents a dynamic, agile stance. With an optimised hull form spearheading her efficiency, her MAN V8 1200 engines mean you can experience speeds up to 35 knots. When at anchor her electro-hydraulic bathing platform creates a convenient launch system for the Williams 345 Jet Tender, or simply a secluded swimming platform. Her sociable galley aft arrangement features an open-plan dining area with sliding doors and a fully opening window leading out to the cockpit. Below deck, six guests are comfortably accommodated across an en suite full-beam owner's stateroom and two further guest cabins.

Deck Molded FRP foam cored laminate White plastic composite compression rail with stainless steel striker strip 'Shoe Box' type joint; the hull-to-deck joint fiberglass tabbed internally Cabin Flybridge with Bimini top, helm station, crew seating for approximately 10 people 24 Volt Folding Bimini Stop with synthetic canvas and stainless steel support piping Hull Vessel is a Sedan Bridge style Motor Yacht with a large salon and Galley Up Molded FRP solid FRP (fiber reinforced plastic) laminates below the waterline, with core materials above the waterline White Gelcoat with black boot stripes Exterior Equipment The cockpit includes a wet-bar sink, Kenon single burner grill with Touch Control and a Dometic built in Refrigeration Box. Texture gray canvas vinyl helm seating, bench seating and coaming bolsters. Hot & Cold shower in the transom area Large sliding companionway door system, with Stainless Steel framing and Tempered glass Two (2) paneled flush mounted Tempered glass windshield. One (1) opening side vent windows. High profile, Double rung, Stainless steel railings from cockpit around the forward perimeter of the vessel. Aft area of vessel is designed with full gunnels. Additional Grab rails along with Fly-bridge sides. Transom compartment is fitted with an electro-hydraulic hinged tender door, tender guide rollers and electric tender winch. Vessel is fitted with a molded transom tender compartment. 14" stainless steel horn type cleats throughout the vessel. 24 Volt remote electric retracting roll-up cockpit shade, with Sunbrella fabric. Interior Cabin Salon is an open layout design with Galley up on the Port side aft, and L-shaped sectional sofa to Stbd, U-shaped sectional sofa to port Entertainment center to stbd. Master Berth aft with King sized Island style bunk and connects to an En-suite Head VIP Berth forward with Queen sized Island style bunk and connects to and En-suite/shared Common Head Guest Berth Starboard side, with Double Twin sized bunks. Gloss finished Dark Walnut wood grain cabinetry and trim. Windows are fixed and electric opening, tinted and tempered. Textured vinyl

headliner material Wall-liner material is Simulated leather and textured cloth. Flooring is Off White Berber style cut to fit carpeting, with overlock stitching or binding Counter tops are polished white marble and blossom walnut Systems & Equipment Lighting is LED 24 volt DC lighting fixtures HVAC/Air Conditioning System: One (1) Dometic Marine Air Systems 36,000 BTU Remote compressor air units, with Digital Controls. Two (2) Dometic Marine Air Systems 12,000 BTU Remote compressor air units, with Digital Controls. Two (2) Dometic Marine Air Systems 16,000 BTU Remote compressor air units, with Digital Controls. One (1) Dometic Marine Air Systems 6,000 BTU Remote compressor air units, with Digital Controls. Air unit(s) in cabin heating system are equipped with reverse cycle operation for heating. Two (2) Bosch 800 series Separate Washer & Dryer. Central Vacuum System with hose and attachments. Galley Equipment One (1) Full Size in Counter Mounted Refrigerator/Freezer with integral ice maker. Vitrifrigo Stainless Steel Ice Maker. Freezer built into refrigerator. Euro-Kera Trident four (4) burner 220 volt Electric Stove with Touch Control and Ceramic Glass Cook-top. Miele Stainless Steel combination Convection Oven & Microwave. Microwave is built in combination with oven. Electronics & Navigation Equipment Two (2) Garmin GPS-Map 8616 xsv, 16" Multi-Functional Navigation Display at lower Helm. Two (2) Garmin GPS-Map 8616 xsv, 16" Multi-Functional Navigation Display at Upper Helm. Two (2) Garmin GHS11 Remote Black Box VHR Radio with remote wired Mic at helm. Item is linked to GPS chartplotter or is equipped with internal GPS for DSC calling feature. 72 Mile Marine Radar, with Open Array Radar Antenna. Integrated in Chartplotter(s). Two (2) Garmin GMI-20 Digital Depth Display. Two (2) Garmin GHC-20 Autopilot Hailer speaker is integrated into both VHF Radios. Audio/Visual Equipment One (1) 50" LCD/LED High Definition TV in the Salon with separate DVD player. One (1) 40" LCD/LED High Definition TV in the Master Stateroom with separate DVD player One (1) 36" LCD/LED High Definition TV in the VIP Stateroom with separate DVD player. One (1) 36" LCD/LED High Definition TV in the Guest Stateroom with separate DVD player. Three (3) Fusion Apollo MS-RA770, AM/FM/Media player with Sirius XM/Bluetooth features . Two (2) Fusion MS-AV750 Stereo/CD/DVD Satellite Radio Player One (1) Fusion MS-NRX300 remote control pad at cockpit Twelve (12) speakers Fuel Systems Two (2) (429) Gallons each Fuel/Tanks Reinforced flexible hose suited for diesel service Two (2) Mann Spin on sealed metal canister type filter /water separators fitted with water accumulation sensors. Separ 510 fuel filter/water separator Steering Systems Dual Station, 24 Volt Electro-Hydraulic Power Steering Reinforced flexible hoses with metallic fittings Dripless Rudder Shaft Seals Sleipner Side Power 24 volt Bow & Stern Thrusters Electrical Systems - DC & ACD/C Electrical Systems: 24 Volt systems Four (4) Group 8D, Flooded Lead Acid Batteries for House/Starting/thruster/windlass system(s) 12 Volt System One (1) Group 31, Flooded Lead Acid Batteries for Generator Four (4) Battery Switches, energizing solenoid switches in the main electrical panel and in the engine room The main DC breaker installed in the main console's DC breaker panel. Main Buss Fused protection installed above batteries in the aft bilge. DC branch breakers in the main Salon electrical panel, in the engine room and under the helm Mastervolt Chargemaster 24/60-3 - 24 volt/60 amp battery charger Two (2) 24 volt engine mounted and belt driven main engine alternators. AC Electrical Systems: One (1) 50 amp 240 volt @ 60

Hz shore power Vessel's receptacle is constructed of polished stainless steel. Fixed wired 24 Volt actuated Glendinning Cablemaster retractable cable system. Main AC breakers in main Engine room electrical panel. AC branch breakers in the main cabin AC electrical panel AC voltage & amperage gauges in the main AC electric panel Individual energizing breakers with split loads located in the main electric panel Energy Solutions Iso-Boost 50 amp Isolation transformer Water Systems Freshwater System - Roto-Molded Polyethylene, 159 Gals Water Tankage One (1) 24 volt Automatic pressurized diaphragm type Freshwater pump. Red & blue plastic PEX type tubing and rubber hoses Dock-side hose connection at the port transom wing Hot Water System - 39 Gallon, 24 volt electric heated unit Blackwater "Sewage" System- (3) Planue 12 volt electric macerating Toilet, with Fresh water supply Type III MSD Waste System Approximately 50 gallon Polyethylene Blackwater holding tank 24 Volt Macerating type overboard discharge pump, with (2) Y-Valves for direct ovbd operation from toilets

Basic Information

Category: Motor Yacht

Model Year: 2021

Year Built: 2021

Country: United States

Dimensions

LOA: 62' 1" (18.92mm)

Beam: 16.5

Min Draft: 4' 10" (1.47mm)

Speed, Capacities and Weight

Water Capacity: 132 Gallons

Fuel Capacity: 429 Gal Gallons

Accommodations

Total Cabins: 3

Total Heads: 2

Hull and Deck Information

Hull Material: Fiberglass

Engine Information

Engines: 2

Manufacturer: MAN

Engine Type: Inboard

Fuel Type: Diesel

PHOTOS

DJI_20240807113940_0757_D



DJI_20240807113947_0759_D



DJI_20240807113952_0761_D



DJI_20240807113958_0765_D



DJI_20240807114000_0766_D



DJI_20240807114016_0769_D



DJI_20240807114023_0772_D



DJI_20240807114025_0773_D



DJI_20240807114029_0774_D



DJI_20240807114033_0776_D



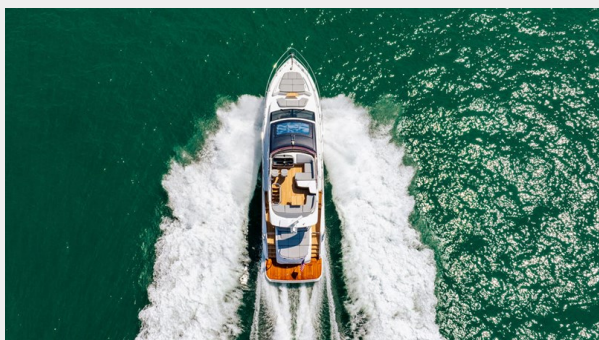
DJI_20240807114036_0778_D



DJI_20240807114037_0779_D



DJI_20240807114051_0782_D



DJI_20240807114257_0789_D



DJI_20240807114301_0792_D



DJI_20240807114334_0797_D



DJI_20240807114402_0803_D



DJI_20240807114406_0805_D



DJI_20240807114436_0809_D



DJI_20240807114441_0812_D



DJI_20240807114446_0815_D



DJI_20240807114449_0817_D



DJI_20240807114515_0819_D



DJI_20240807114559_0825_D



DJI_20240807114607_0829_D



DJI_20240807114611_0831_D



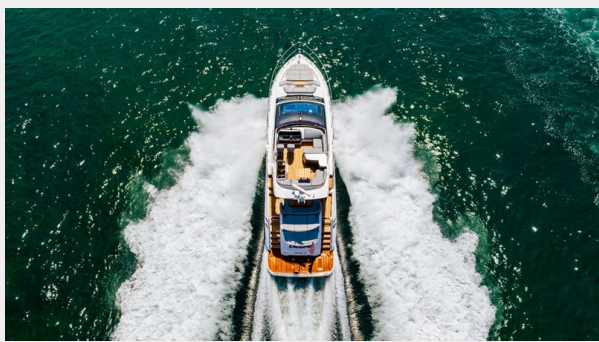
DJI_20240807114612_0832_D



DJI_20240807114647_0836_D



DJI_20240807114703_0838_D



DJI_20240807114733_0841_D



DJI_20240807114815_0847_D



DJI_20240807114943_0852_D



DJI_20240807114950_0856_D



DJI_20240807114952_0857_D



DJI_20240807115001_0860_D



DJI_20240807115003_0861_D



DJI_20240807115034_0864_D



DJI_20240807115218_0868_D



DJI_20240807115225_0872_D



DJI_20240807115433_0877_D



DJI_20240807115529_0883_D



DSC04914



DSC04916



DSC04917



DSC04918



DSC04919



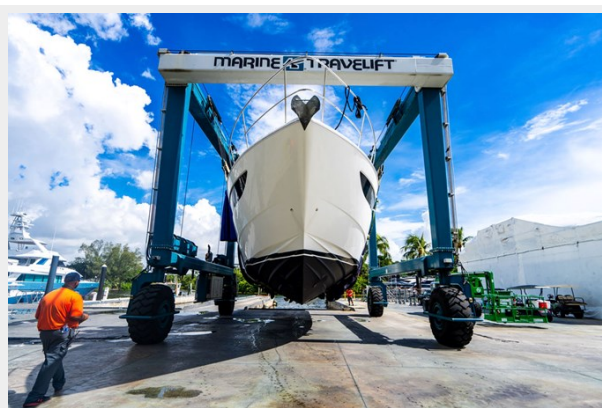
DSC04920



DSC04921



DSC04922



DSC04923



DSC04924



DSC04925



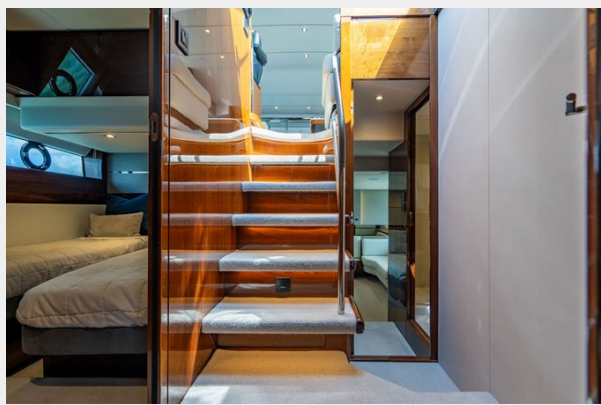
DSC04926



DSC05775-Enhanced-NR



DSC05776-HDR



DSC05778-Enhanced-NR



DSC05779-Enhanced-NR



DSC05780



DSC05781-Enhanced-NR



DSC05782-Enhanced-NR



DSC05783-Enhanced-NR



DSC05784-Enhanced-NR



DSC05785-Enhanced-NR



DSC05786-Enhanced-NR



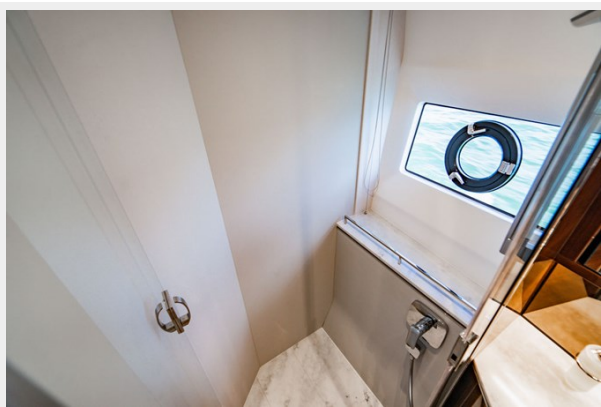
DSC05788



DSC05787



DSC05789



DSC05790-Enhanced-NR



DSC05791-Enhanced-NR



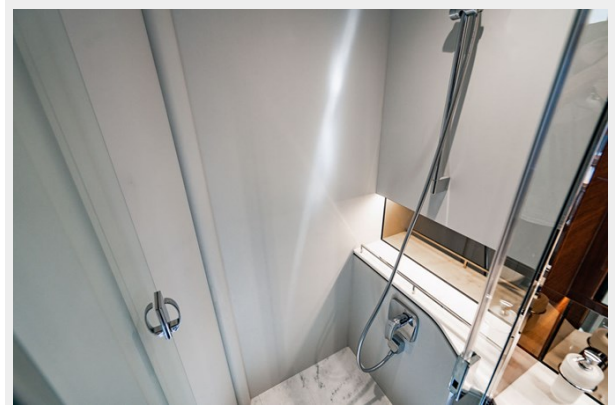
DSC05792-Enhanced-NR



DSC05793



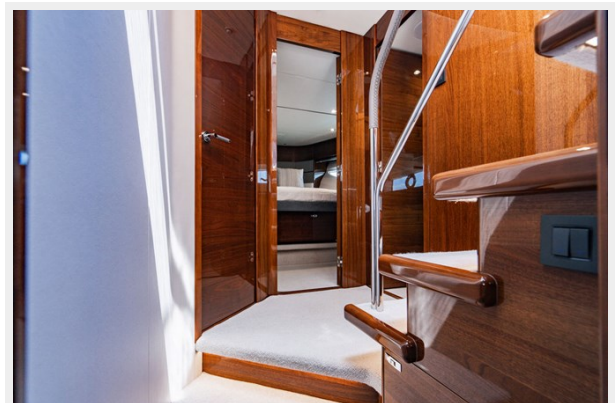
DSC05794



DSC05795



DSC05796



DSC05798



DSC05799



DSC05800-Enhanced-NR



DSC05801-Enhanced-NR



DSC05802



DSC05803-Enhanced-NR



DSC05804-Enhanced-NR



DSC05805-Enhanced-NR



DSC05806-Enhanced-NR



DSC05807



DSC05808



DSC05809-Enhanced-NR



DSC05810-Enhanced-NR



DSC05811



DSC05812-Enhanced-NR



DSC05813



DSC05814



DSC05815



DSC05816-Enhanced-NR



DSC05817



DSC05818



DSC05819



DSC05820



DSC05821



DSC05822



DSC05823



DSC05824



DSC05825



DSC05826



DSC05827



DSC05828



DSC05829



DSC05831



DSC05832



DSC05833



DSC05834



DSC05835



DSC05836



DSC05837



DSC05839



DSC05840



DSC05842



DSC05843



DSC05844



DSC05845



DSC05846



DSC05847



DSC05848



DSC05849



DSC05850



DSC05851



DSC05852



DSC05853



DSC05854



DSC05855



DSC05856



DSC05857



DSC05858-Enhanced-NR



DSC05859-Enhanced-NR



DSC05860-Enhanced-NR



DSC05861



DSC05862-Enhanced-NR



DSC05863



DSC05865



DSC05866



DSC05867-Enhanced-NR



DSC05868



DSC05869



DSC05870



DSC05871-Enhanced-NR



DSC05872-Enhanced-NR



DSC05873



DSC05874



DSC05876



DSC05877



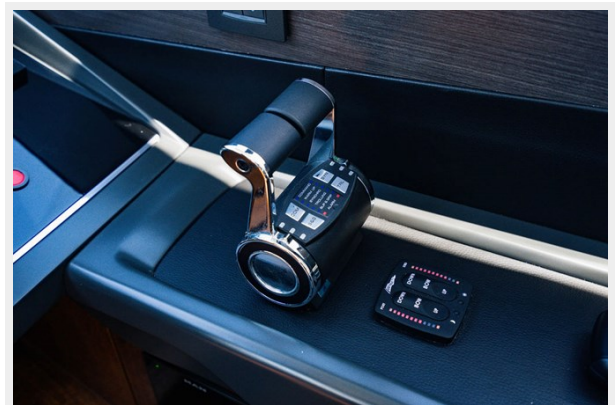
DSC05878



DSC05879



DSC05880



DSC05881



DSC05882



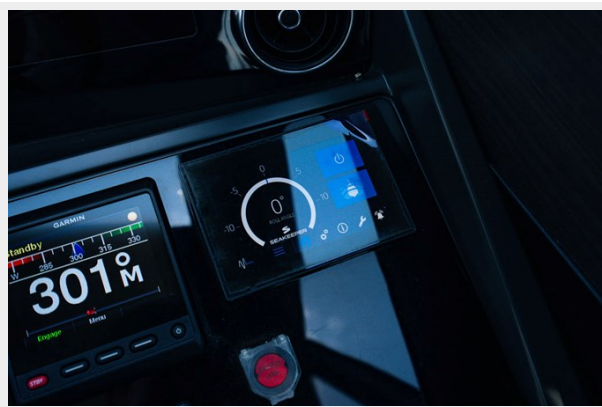
DSC05883



DSC05884



DSC05886



DSC05887



DSC05888



DSC05889



DSC05890



DSC05891



DSC05892



DSC05893



DSC05894



DSC05895



DSC05897



DSC05898



DSC05901



DSC05903



DSC05904



DSC05905



DSC05906



DSC05907



DSC05909



DSC05910



DSC05911



DSC05912



DSC05913



DSC05914



DSC05915



DSC05916



DSC05917



DSC05918



DSC05919



DSC05920



DSC05921



DSC05922



DSC05923



DSC05924



DSC05925



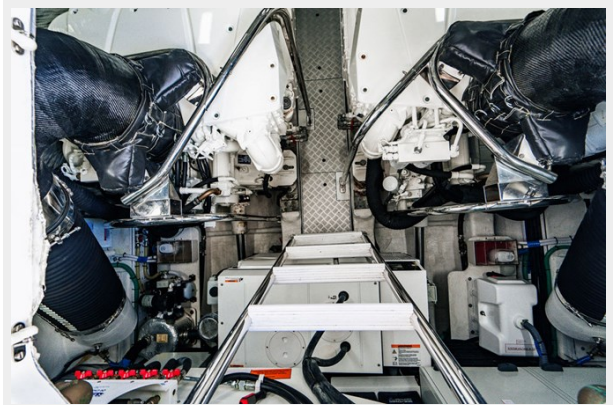
DSC05926



DSC05927



DSC05928



DSC05929



DSC05930-Enhanced-NR



DSC05931



DSC05932



CONTACTS

Andrey Shestakov, leading yacht broker of the sales department of Shestakov Yacht Sales Inc. Shestakov Yacht Sales Inc., the official representative of the Miami/Fort Lauderdale FL headquarters.

Contact details

Email: **andrey@shestakovyachtsales.com**

Web: shestakovyachtsales.com/en/

Telephones

USA: **+1(954)274-4435**

Office hours

Monday – Saturday: **9:00 - 21:00** EDT

Sunday: **closed**

Address



Harbour Towne Marina, 850 NE 3rd St, STE 213, Dania, FL 33004