

GREYT ESCAPE — ASTONDOA



Builder: ASTONDOA

Year Built: 2013

Model: Motor Yacht

Price: \$1,699,000 USD

Location: United States

LOA: 72' (21.95mm)

Beam: 18.66

Max Draft: 4' 6" (1.37mm)

Cruise Speed: 20 Knots Kts. (23 MPH)

Max Speed: 26 Knots Kts. (30 MPH)

Our experienced yacht broker, Andrey Shestakov, will help you choose and buy a yacht that best suits your needs **GREYT ESCAPE — ASTONDOA** from **our catalogue**. Presently, at **Shestakov Yacht Sales Inc.**, we have a wide variety of yachts available on **our sale's list**. We also work in close contact with all the big **yacht manufacturers** from all over the world.

If you would like to buy a yacht **GREYT ESCAPE — ASTONDOA** or would like help answering any questions concerning purchasing, selling or chartering a yacht, please call **+1(954)274-4435**

TABLE OF CONTENTS

TABLE OF CONTENTS	2
SPECIFICATIONS	3
Overview	3
Basic Information	3
Dimensions	3
Speed, Capacities and Weight	3
Accommodations	3
Hull and Deck Information	4
Engine Information	4
PHOTOS	5
CONTACTS	21
Contact details	21
Telephones	21
Office hours	21
Address	21

SPECIFICATIONS

Overview

WNERS HAVE FOUND THEIR NEXT BOAT! BRING ALL OFFERS!ALL TRADES WILL BE CONSIDERED\$100,000 Price DropElectronics replaced in 2022.Bottom paint and propspeed in December 2023.Turnkey Boat, only 1915 hours on mains, 2150 on generators.Owned by an experienced yachtsman, full-time crew since new.Open Checkbook maintenance program!Sleeps 2 crewGarage for a Williams 325 and PWC on swim platform- RARE!

Basic Information

Category: Motor Yacht

Model Year: 2013

Year Built: 2013

Country: United States

Dimensions

LOA: 72' (21.95mm)

Beam: 18.66

Max Draft: 4' 6" (1.37mm)

Speed, Capacities and Weight

Cruise Speed: 20 Knots Kts. (23 MPH) **Cruise Speed Range:** 300

Max Speed: 26 Knots Kts. (30 MPH) **Water Capacity:** 400 Gallons

Holding Tank: 100 Gal Gallons

Fuel Capacity: 1162 Gal Gallons

Accommodations

Total Cabins: 4

Total Heads: 4

Crew Heads: 1

Hull and Deck Information

Hull Material: Fiberglass

Hull Configuration: Deep Vee

Engine Information

Engines: 2

Manufacturer: MAN

Engine Type: Inboard

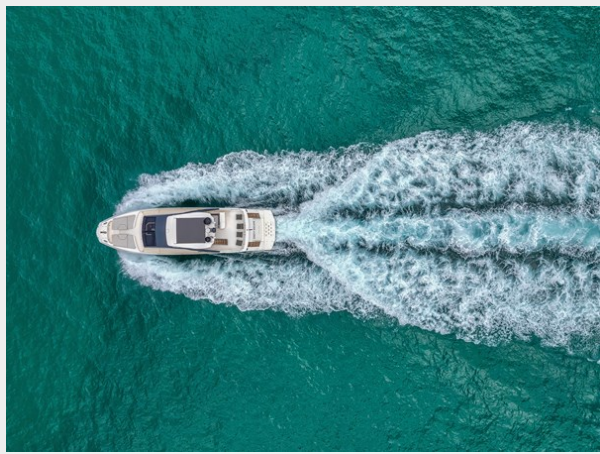
Fuel Type: Diesel

PHOTOS





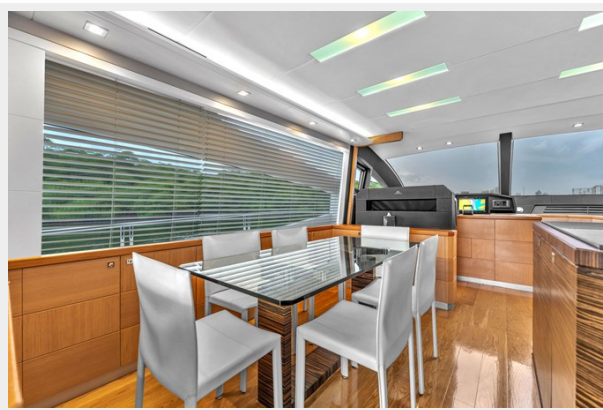


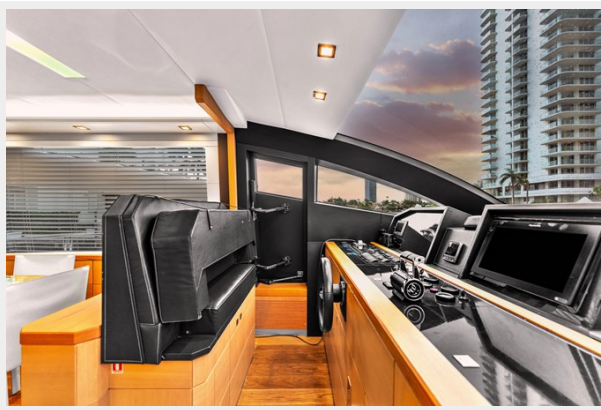


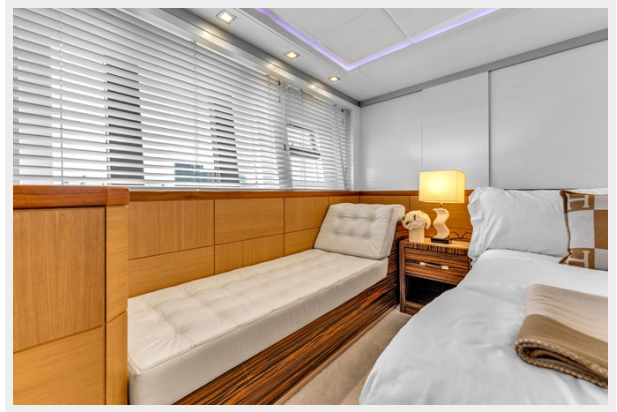
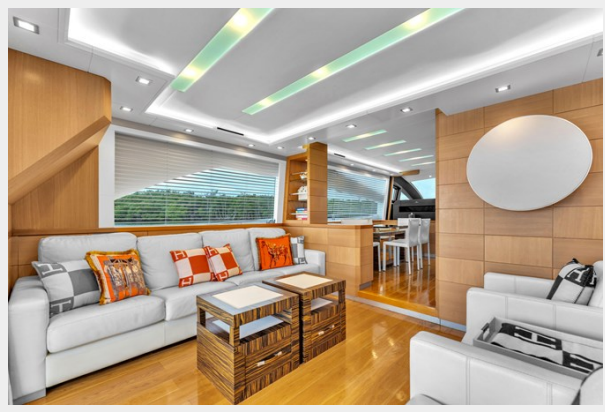


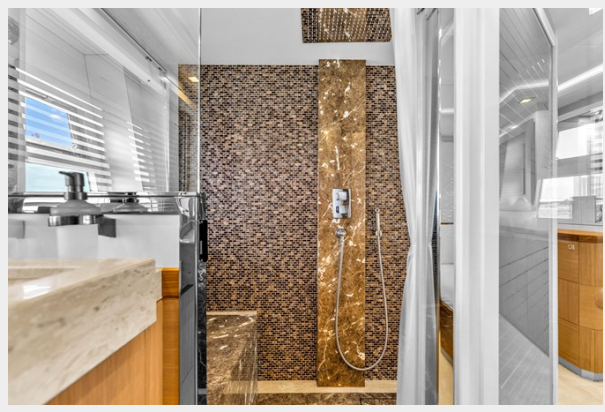


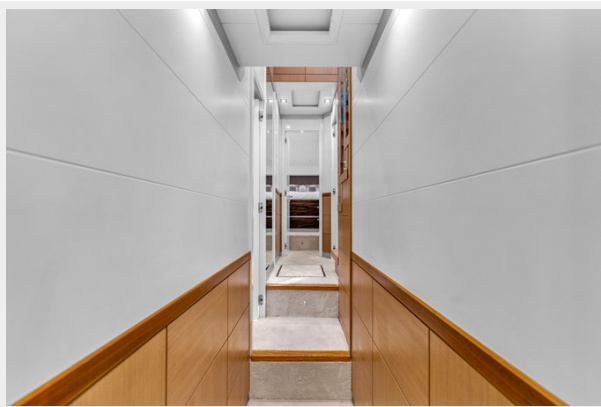
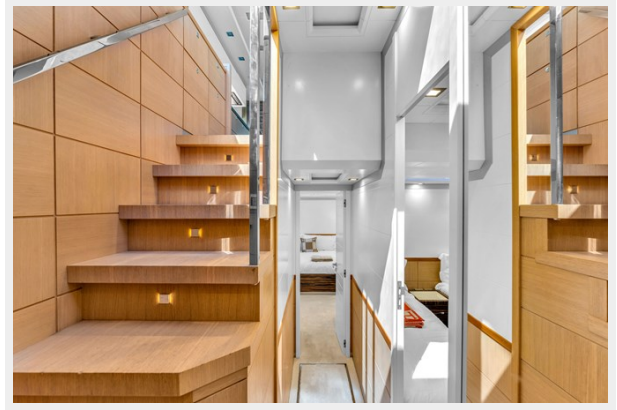
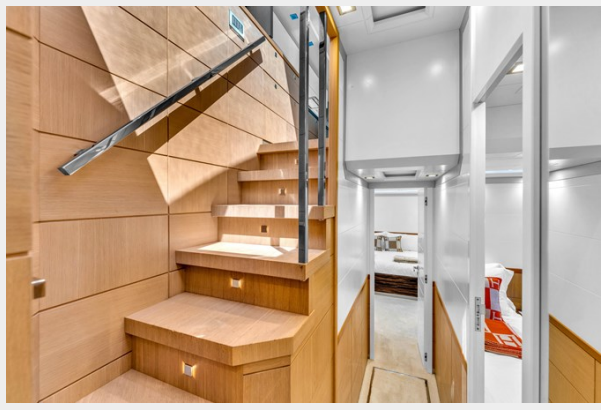


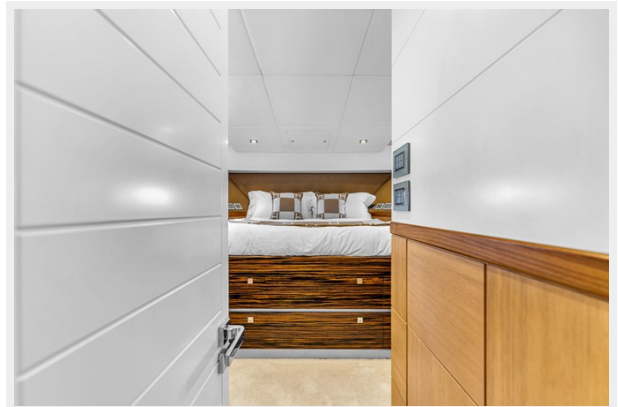
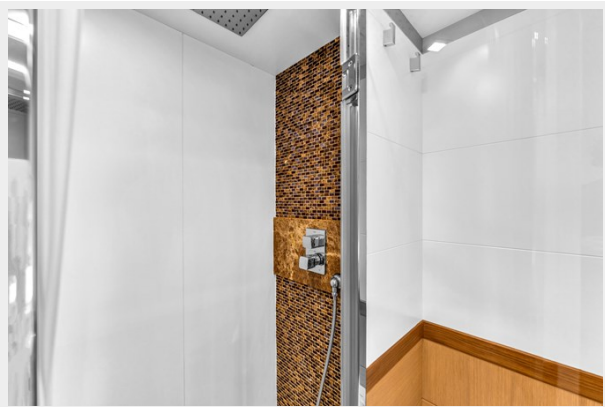


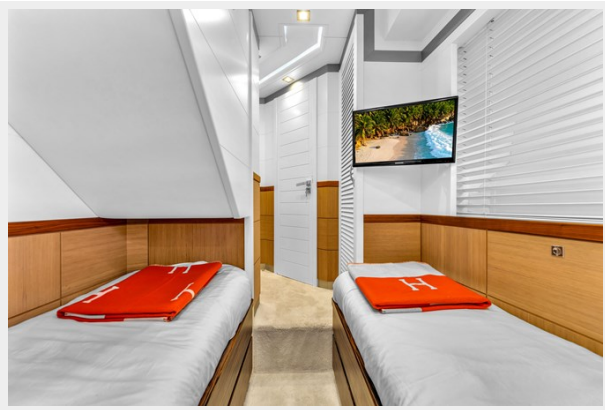
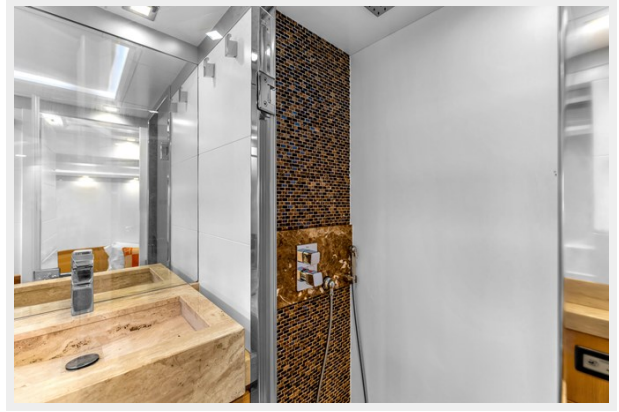
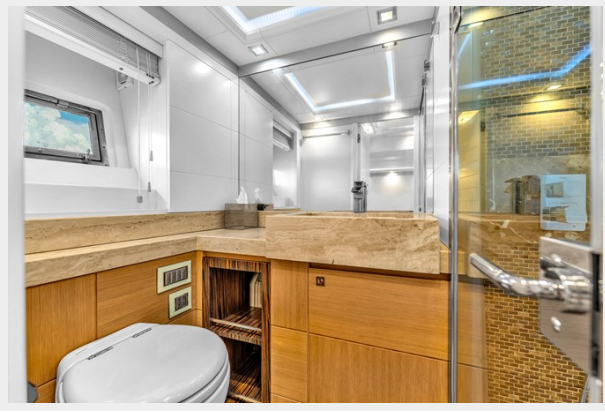


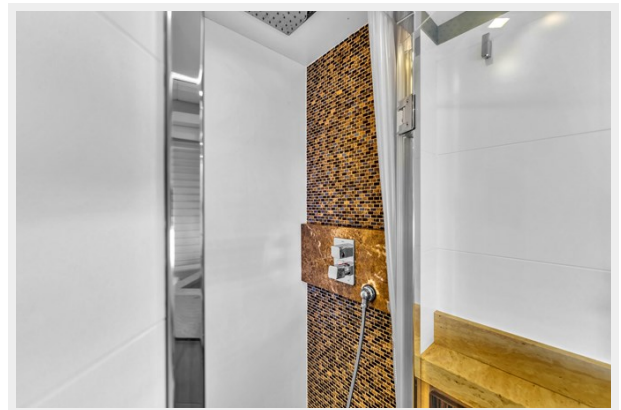
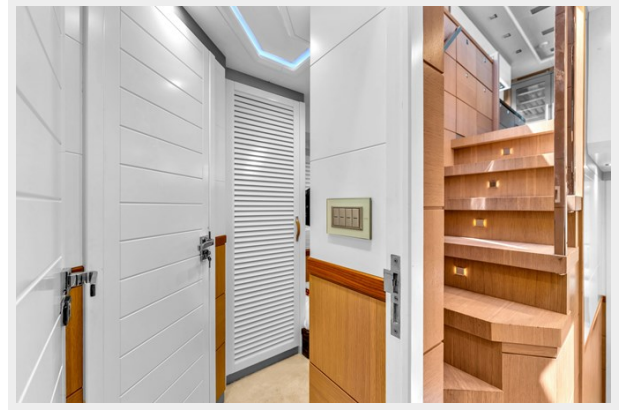
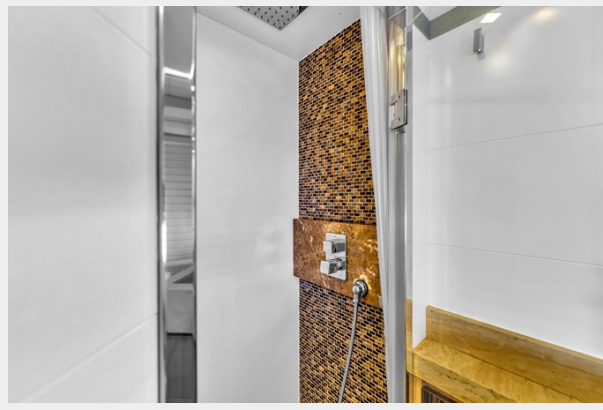


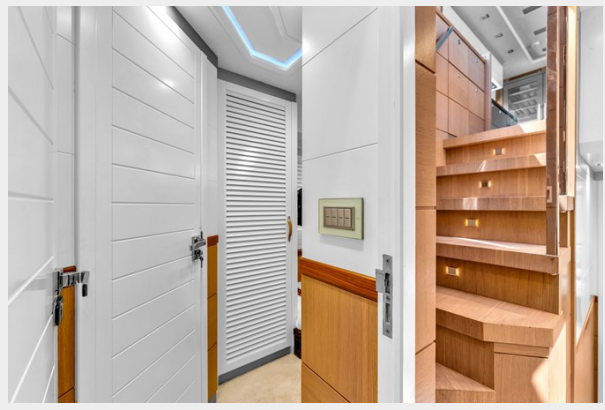












CONTACTS

Andrey Shestakov, leading yacht broker of the sales department of Shestakov Yacht Sales Inc. Shestakov Yacht Sales Inc., the official representative of the Miami/Fort Lauderdale FL headquarters.

Contact details

Email: **andrey@shestakovyachtsales.com**

Web: shestakovyachtsales.com/en/

Telephones

USA: **+1(954)274-4435**

Office hours

Monday – Saturday: **9:00 - 21:00** EDT

Sunday: **closed**

Address



Harbour Towne Marina, 850 NE 3rd St, STE 213, Dania, FL 33004