

LILY — HINCKLEY



Builder: HINCKLEY

Year Built: 1999

Model: Cruising Sailboat

Price: \$595,000 USD

Location: United States

LOA: 51' 6" (15.7mm)

Beam: 14

Min Draft: 6' (1.8mm)

Max Draft: 11' (3.33mm)

Our experienced yacht broker, Andrey Shestakov, will help you choose and buy a yacht that best suits your needs **LILY — HINCKLEY** from **our catalogue**. Presently, at **Shestakov Yacht Sales Inc.**, we have a wide variety of yachts available on **our sale's list**. We also work in close contact with all the big **yacht manufacturers** from all over the world.

If you would like to buy a yacht **LILY — HINCKLEY** or would like help answering any questions concerning purchasing, selling or chartering a yacht, please call **+1(954)274-4435**

TABLE OF CONTENTS

TABLE OF CONTENTS	2
SPECIFICATIONS	5
Overview	5
Basic Information	5
Dimensions	5
Speed, Capacities and Weight	5
Accommodations	5
Hull and Deck Information	6
Engine Information	6
PHOTOS	7
Looking Forward	7
Under Sail	7
Looking Aft Midships	7
Deck Detail	7
Deck Detail	8
Cockpit	8
Cockpit Detail	8
Cockpit Looking Aft	8
Cockpit Aft	8
Aft Deck	8
Solar Panels	9
Companionway	9
Main Salon	9
Main Salon Port	9
Dining Table	9
Table Inlay	9
Main Salon Starboard	10
Main Salon Looking Aft	10

Below from Companionway	10
Galley Forward	10
Galley	10
Galley Aft	10
Aft Cabin	11
Aft Cabin Outboard	11
Aft Cabin Looking Forward	11
Aft Head	11
Aft Shower Stall	11
Nav Station	11
Switch Panel	12
Starboard Guest Cabin Forward	12
Stbd. Guest Cabin	12
Port Guest Cabin Looking Forward	12
Port Guest Cabin	12
Forward Head and Shower	12
Builder Plate	13
Profile	13
Stern View	13
At Dock	13
Transom	13
Sunset	13
Fresh Paint	14
Underbody	14
Engine	14
CONTACTS	15
Contact details	15
Telephones	15
Office hours	15

Address

15

SPECIFICATIONS

Overview

LILY is an extremely well maintained, custom-built Hinckley SW-52 originally commissioned by a very experienced sailor. No expense spared and is in near perfect condition. Many recent upgrades include new sails, all new aircon, electronics, brand new hull paint and much more as noted herein.

Basic Information

Category: Cruising Sailboat

Model Year: 1999

Year Built: 1999

Country: United States

Dimensions

LOA: 51' 6" (15.7mm)

LWL: 37' 6" (11.43mm)

Beam: 14

Min Draft: 6' (1.8mm)

Max Draft: 11' (3.33mm)

Speed, Capacities and Weight

Gross Tonnage: 28 Pounds

Water Capacity: 200 Gallons

Fuel Capacity: 120 Gal Gallons

Accommodations

Total Cabins: 3

Total Heads: 2

Hull and Deck Information

Hull Material: Composite

Deck Material: Teak

Hull Configuration: Monohull

Hull Color: Flag Blue

Hull Designer: McCurdy & Rhodes

Interior Designer: Hinckley

Engine Information

Engines: 1

Manufacturer: Yanmar

Engine Type: Inboard

Fuel Type: Diesel

PHOTOS

Under Sail



Looking Forward



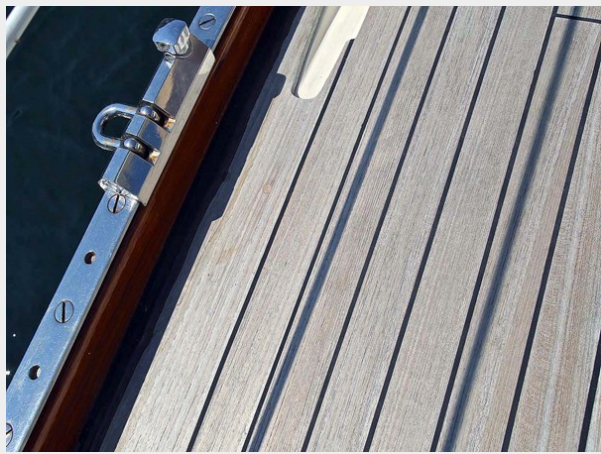
Looking Aft Midships



Deck Detail



Deck Detail



Cockpit



Cockpit Detail



Cockpit Looking Aft



Cockpit Aft



Aft Deck



Solar Panels



Companionway



Main Salon



Main Salon Port



Dining Table



Table Inlay



Main Salon Starboard



Main Salon Looking Aft



Below from Companionway



Galley Forward



Galley



Galley Aft



Aft Cabin



Aft Cabin Outboard



Aft Cabin Looking Forward



Aft Head



Aft Shower Stall



Nav Station



Switch Panel



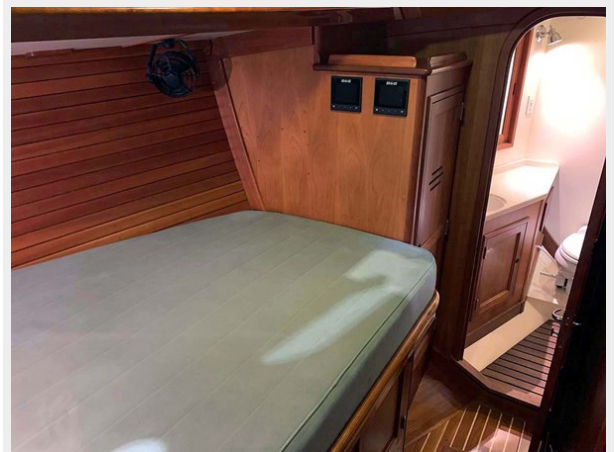
Starboard Guest Cabin Forward



Stbd. Guest Cabin



Port Guest Cabin Looking Forward



Port Guest Cabin



Forward Head and Shower



Builder Plate



Profile



Stern View



At Dock



Transom



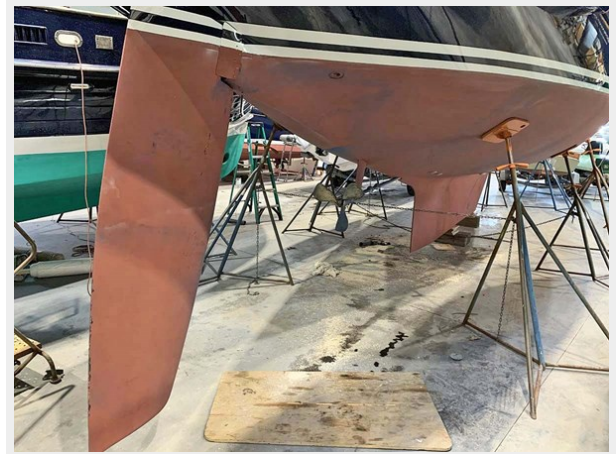
Sunset



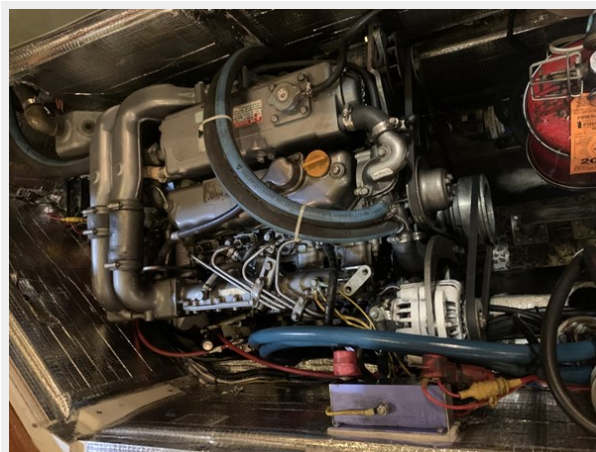
Fresh Paint



Underbody



Engine



CONTACTS

Andrey Shestakov, leading yacht broker of the sales department of Shestakov Yacht Sales Inc. Shestakov Yacht Sales Inc., the official representative of the Miami/Fort Lauderdale FL headquarters.

Contact details

Email: **andrey@shestakovyachtsales.com**

Web: shestakovyachtsales.com/en/

Telephones

USA: **+1(954)274-4435**

Office hours

Monday – Saturday: **9:00 - 21:00** EDT

Sunday: **closed**

Address



Harbour Towne Marina, 850 NE 3rd St, STE 213, Dania, FL 33004