

# FLYBRIDGE CRUISER 33' — HONEYMOON



**Builder:** HONEYMOON

**LOA:** 33' (10.06m)

**Year Built:** 1992

**Model:** Motor Yacht

**Price:** \$118,000 AUD

**Location:** N/A

Our experienced yacht broker, Andrey Shestakov, will help you choose and buy a yacht that best suits your needs **Flybridge Cruiser 33' — HONEYMOON** from **our catalogue**. Presently, at **Shestakov Yacht Sales Inc.**, we have a wide variety of yachts available on **our sale's list**. We also work in close contact with all the big **yacht manufacturers** from all over the world.

If you would like to buy a yacht **Flybridge Cruiser 33' — HONEYMOON** or would like help answering any questions concerning purchasing, selling or chartering a yacht, please call **+1(954)274-4435**

---

# TABLE OF CONTENTS

---

TABLE OF CONTENTS	2
SPECIFICATIONS	3
Overview	3
Basic Information	4
Dimensions	5
Accommodations	5
Hull and Deck Information	5
Engine Information	5
PHOTOS	6
CONTACTS	14
Contact details	14
Telephones	14
Office hours	14
Address	14

---

# SPECIFICATIONS

---

## Overview

---

"

A 33' Flybridge Cruiser, semi - displacement hull of GRP construction.

\r\n\r\n

Powered by Yanmar, 100HP, 4-cylinder diesel engine.

\r\n\r\n

With a comfortable cruising speed of 8 knots.

\r\n\r\n

\r\n\r\n

Entry via aft transom platform through removeable transom door.

\r\n\r\n

Removeable covered cockpit area allowing access to side decks and also with internal step ladder access to flybridge.

\r\n\r\n

\r\n\r\n

Flybridge open with canvas bimini and clears, centre upper helm console and longitudinal side bunk bench seats. A great place to relax!

\r\n\r\n

\r\n\r\n

Entry to cabin through lockable compainway door to open saloon area with side table settee and longitudinal bench seat. Open upper galley with 2 burner gas oven .

\r\n\r\n

Starboard side lower helm control console.

\r\n\r\n

\r\n\r\n

Stepping down forward to starboard side enclosed head / shower compartment, and adjacent port locker storage compartment.

\r\n\r\n

Then forward to large comfortable open bunk berth area. Also has large opening hatch.

\r\n\r\n

All fitted out in soft furnishings and limewash timber throughout.

\r\n\r\n

Including all the creature comforts, electric anchor winch, compressor driven refrigeration, hot water system, VHF radios and stereo.

\r\n\r\n

\r\n\r\n

All set to cruise the lovely waterways on comfort.

\r\n\r\n

\r\n\r\n

Recently antifouled February 2023.

\r\n"

---

## Basic Information

---

**Category:** Motor Yacht

**Year Built:** 1992

**Country:** N/A

---

## Dimensions

---

**LOA:** 33' (10.06mm)

---

## Accommodations

---

**Total Berths:** 4

---

## Hull and Deck Information

---

**Hull Material:** GRP

**Deck Material:** GRP

**Hull Color:** White

**Exterior Designer:**

---

## Engine Information

---

**Engines:** 1

**Manufacturer:** Yanmar

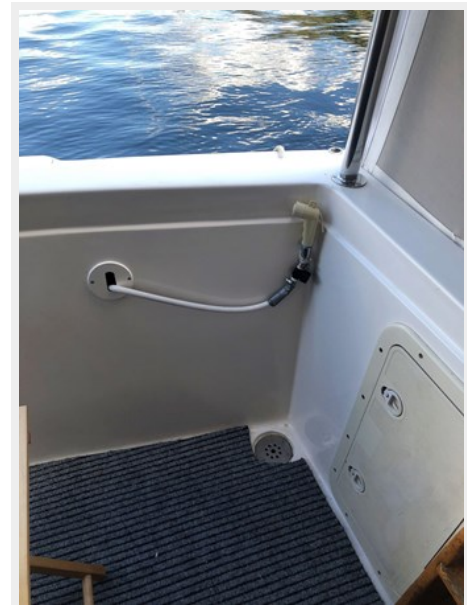
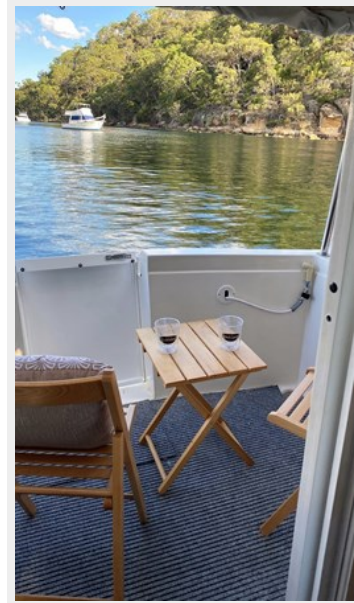
**Engine Type:** Inboard/Shaftdrive

**Fuel Type:** Diesel

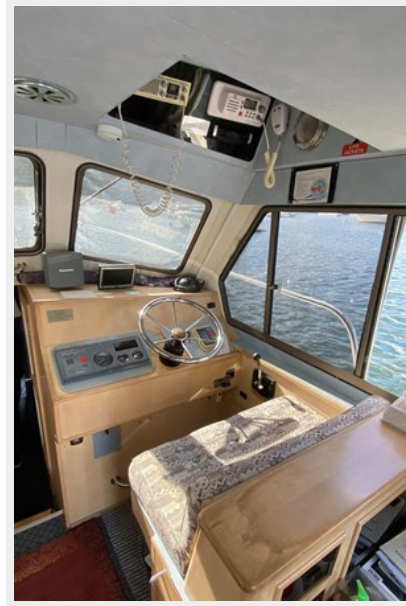
# PHOTOS

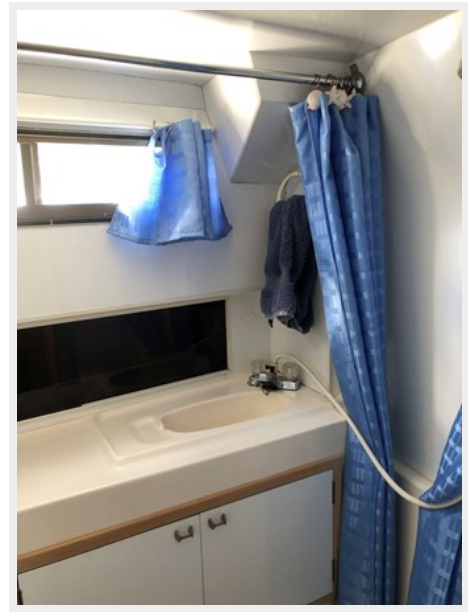


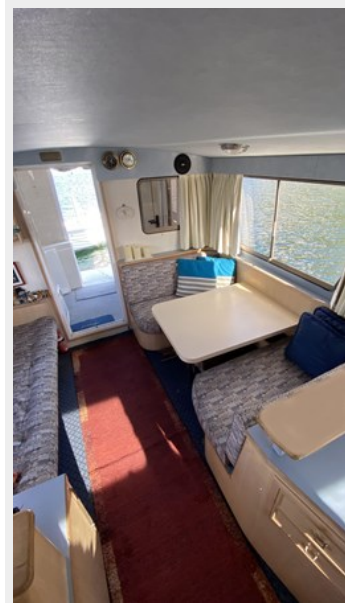


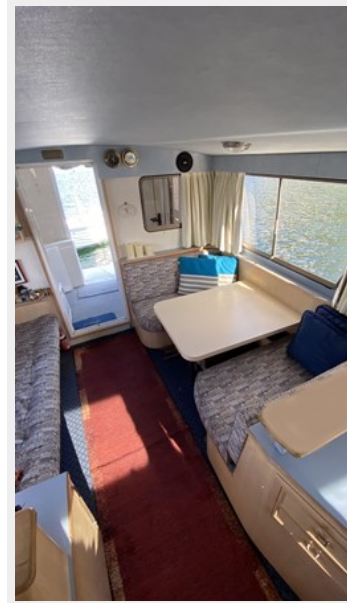














# CONTACTS

---

Andrey Shestakov, leading yacht broker of the sales department of Shestakov Yacht Sales Inc. Shestakov Yacht Sales Inc., the official representative of the Miami/Fort Lauderdale FL headquarters.

## Contact details

---

Email: **andrey@shestakovyachtsales.com**

Web: [shestakovyachtsales.com/en/](http://shestakovyachtsales.com/en/)

## Telephones

---

USA: **+1(954)274-4435**

## Office hours

---

Monday – Saturday: **9:00 - 21:00** EDT

Sunday: **closed**

## Address

---



Harbour Towne Marina, 850 NE 3rd St, STE 213, Dania, FL 33004