

TRUE NORTH — LITTLE HARBOR



Builder: LITTLE HARBOR

Year Built: 1990

Model: Cruising Sailboat

Price: \$330,000 USD

Location: United States

LOA: 54' (16.46mm)

Beam: 15

Min Draft: 6' (1.83mm)

Max Draft: 12' (3.66mm)

Our experienced yacht broker, Andrey Shestakov, will help you choose and buy a yacht that best suits your needs **TRUE NORTH — LITTLE HARBOR** from **our catalogue**. Presently, at **Shestakov Yacht Sales Inc.**, we have a wide variety of yachts available on **our sale's list**. We also work in close contact with all the big **yacht manufacturers** from all over the world.

If you would like to buy a yacht **TRUE NORTH — LITTLE HARBOR** or would like help answering any questions concerning purchasing, selling or chartering a yacht, please call **+1(954)274-4435**

TABLE OF CONTENTS

TABLE OF CONTENTS	2
SPECIFICATIONS	4
Overview	4
Basic Information	4
Dimensions	4
Speed, Capacities and Weight	4
Accommodations	4
Hull and Deck Information	5
Engine Information	5
PHOTOS	6
Stb Bow On Mooring	6
Sailing Stbd Tack	6
Stb Beam On Mooring	6
Port Quarter On Mooring	6
Bow Pulpit	7
Foredeck Looking Aft	7
Mid Deck and Mast Base	7
Starboard Side Deck	7
Port Side Deck	7
Cockpit from Above	7
Aft Cockpit and Aft Deck	8
Aft Deck Looking Aft	8
Cockpit Looking Fwd	8
Salon and Galley Looking Forward	8
Salon Stbd Settee	8
Salon Stbd Settee	8
Salon Looking Aft	9
Galley	9

Galley	9
Galley	9
Electrical Panel	9
Pilot Berth at Nav Station	9
Nav Station and Fwd Stateroom	10
Fwd Stateroom	10
Vanity Mirror	10
Fwd Head	10
Stall Shower Fwd	10
Aft Stateroom	10
Aft Head	11
Salon Engine Access	11
Panel Wiring Refit	11
CONTACTS	12
Contact details	12
Telephones	12
Office hours	12
Address	12

SPECIFICATIONS

Overview

As the only aft-cockpit Little Harbor 54 built, TRUE NORTH is a rare offering in today's brokerage market. In addition to an extensive list of standard Little Harbor amenities, this luxurious bluewater cruiser offers electric sail handling, bow thruster, generator, inverter, air conditioning and Espar heat.

Basic Information

Category: Cruising Sailboat

Model Year: 1990

Year Built: 1990

Country: United States

Dimensions

LOA: 54' (16.46mm)

LWL: 42' 9" (13.03mm)

Beam: 15

Min Draft: 6' (1.83mm)

Max Draft: 12' (3.66mm)

Speed, Capacities and Weight

Gross Tonnage: 33 Pounds

Water Capacity: 380 Gallons

Fuel Capacity: 200 Gal Gallons

Accommodations

Total Cabins: 2

Total Heads: 2

Hull and Deck Information

Hull Material: Fiberglass

Deck Material: Teak

Hull Configuration: Monohull

Hull Color: Stars and Stripes Blue

Hull Designer: Ted Hood

Interior Designer: Ted Hood Design Group

Engine Information

Engines: 1

Manufacturer: westerbeke

Engine Type: Inboard

Fuel Type: Diesel

PHOTOS

Sailing Stbd Tack



Stb Bow On Mooring



Stb Beam On Mooring



Port Quarter On Mooring



Bow Pulpit



Foredeck Looking Aft



Mid Deck and Mast Base



Starboard Side Deck



Port Side Deck



Cockpit from Above



Aft Cockpit and Aft Deck



Aft Deck Looking Aft



Cockpit Looking Fwd



Salon and Galley Looking Forward



Salon Stbd Settee



Salon Stbd Settee



Salon Looking Aft



Galley



Galley



Galley



Electrical Panel



Pilot Berth at Nav Station



Nav Station and Fwd Stateroom



Fwd Stateroom



Vanity Mirror



Fwd Head



Stall Shower Fwd



Aft Stateroom



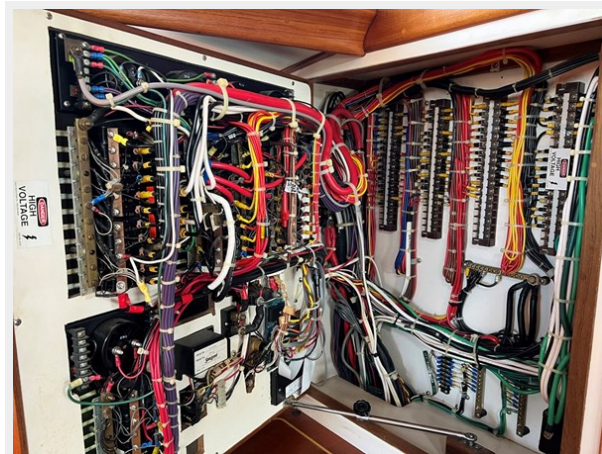
Aft Head



Salon Engine Access



Panel Wiring Refit



CONTACTS

Andrey Shestakov, leading yacht broker of the sales department of Shestakov Yacht Sales Inc. Shestakov Yacht Sales Inc., the official representative of the Miami/Fort Lauderdale FL headquarters.

Contact details

Email: **andrey@shestakovyachtsales.com**

Web: shestakovyachtsales.com/en/

Telephones

USA: **+1(954)274-4435**

Office hours

Monday – Saturday: **9:00 - 21:00** EDT

Sunday: **closed**

Address



Harbour Towne Marina, 850 NE 3rd St, STE 213, Dania, FL 33004