

## N/A — CUTWATER



**Builder:** CUTWATER

**Year Built:** 2016

**Model:** Cruiser

**Price:** \$139,987 USD

**Location:** United States

**LOA:** 32' 4" (9.86mm)

**Beam:** 8.5

**Min Draft:** 2' 4" (0.71mm)

**Max Draft:** 2' 4" (0.71mm)

**Cruise Speed:** 14.77 Knots Kts. (17 MPH)

**Max Speed:** 19.12 Knots Kts. (22 MPH)

Our experienced yacht broker, Andrey Shestakov, will help you choose and buy a yacht that best suits your needs **N/A — CUTWATER** from **our catalogue**. Presently, at **Shestakov Yacht Sales Inc.**, we have a wide variety of yachts available on **our sale's list**. We also work in close contact with all the big **yacht manufacturers** from all over the world.

If you would like to buy a yacht **N/A — CUTWATER** or would like help answering any questions concerning purchasing, selling or chartering a yacht, please call **+1(954)274-4435**

# TABLE OF CONTENTS

TABLE OF CONTENTS	2
SPECIFICATIONS	4
Overview	4
Basic Information	4
Dimensions	4
Speed, Capacities and Weight	4
Accommodations	4
Hull and Deck Information	5
Engine Information	5
PHOTOS	6
2016 C-28 Exterior	6
2016 C-28 Cockpit	7
2016 C-28 Foredeck	7
2016 C-28 Cabin top	8
2016 C-28 Radar Mast	8
2016 C-28 Radar Array	8
2016 C-28 Engine Compartment	8
2016 C-28 Interior	9
2016 C-28 Galley	9
2016 C-28 Interior Fwd	9
2016 C-28 Galley and Companion Seat	9
2016 C-28 Interior Aft Facing	9
2016 C-28 Dinette	10
2016 C-28 Helm	10
2016 C-28 Engine Hours	10
2016 C-28 Mid-berth	10
2016 C-28 Electrical Switching	11
2016 C-28 Galley Equipment	11

---

2016 C-28 Wine Cooler	12
2016 C-28 Wine Cooler	12
2016 C-28 Interior Fwd	12
2016 C-28 Fwd Berth	12
2016 C-28 Head	13
CONTACTS	15
Contact details	15
Telephones	15
Office hours	15
Address	15

---

# SPECIFICATIONS

---

## Overview

---

A versatile and comfortable boat, the Cutwater C-28's efficient and reliable inboard diesel propulsion along with a wide range of standard equipment, is great for extended cruising.

## Basic Information

---

**Category:** Cruiser

**Model Year:** 2016

**Year Built:** 2016

**Country:** United States

## Dimensions

---

**LOA:** 32' 4" (9.86mm)

**Beam:** 8.5

**Min Draft:** 2' 4" (0.71mm)

**Max Draft:** 2' 4" (0.71mm)

## Speed, Capacities and Weight

---

**Cruise Speed:** 14.77 Knots Kts. (17 MPH)

**Max Speed:** 19.12 Knots Kts. (22 MPH)

**Water Capacity:** 40 Gallons

**Holding Tank:** 30 Gal Gallons

**Fuel Capacity:** 100 Gal Gallons

## Accommodations

---

**Total Cabins:** 2

---

## Hull and Deck Information

---

**Hull Material:** Fiberglass

**Deck Material:** Fiberglass

**Hull Configuration:** Planing

---

## Engine Information

---

**Engines:** 1

**Manufacturer:** Volvo Penta

**Engine Type:** Inboard

**Fuel Type:** Diesel

# PHOTOS

**2016 C-28 Exterior**



### 2016 C-28 Cockpit



### 2016 C-28 Foredeck



**2016 C-28 Cabin top**



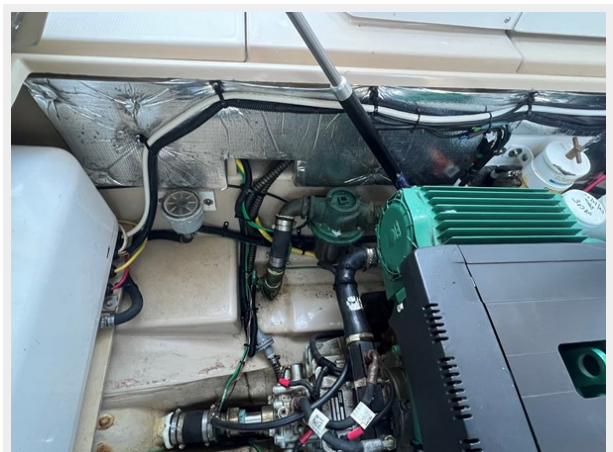
**2016 C-28 Radar Mast**



**2016 C-28 Radar Array**

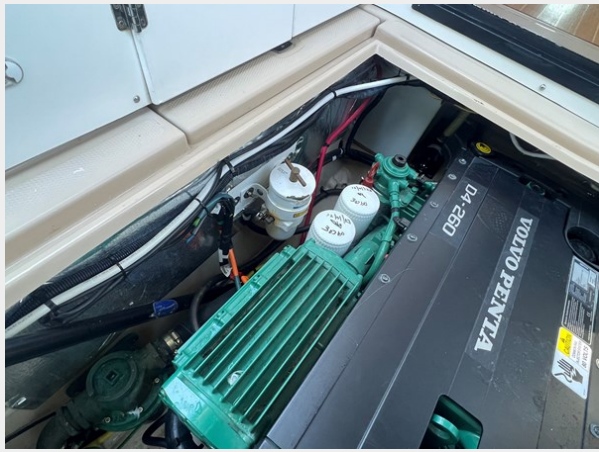


**2016 C-28 Engine Compartment**





**2016 C-28 Interior**



**2016 C-28 Galley**

**2016 C-28 Interior Fwd**



**2016 C-28 Interior Aft Facing**

**2016 C-28 Galley and Companion Seat**



**2016 C-28 Dinette**



**2016 C-28 Helm**



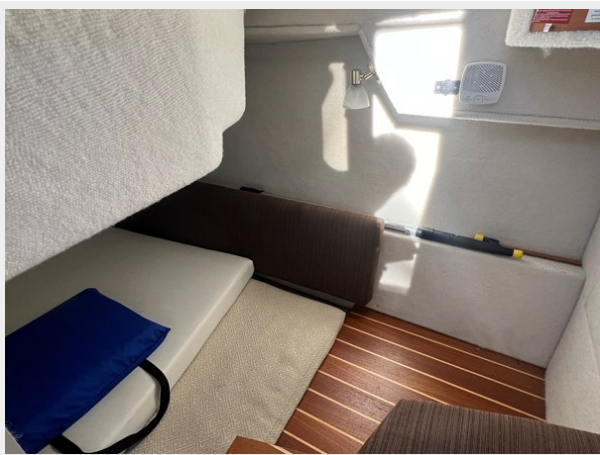
**2016 C-28 Engine Hours**



**2016 C-28 Mid-berth**



### 2016 C-28 Electrical Switching



### 2016 C-28 Galley Equipment



**2016 C-28 Wine Cooler**



**2016 C-28 Wine Cooler**



**2016 C-28 Interior Fwd**



**2016 C-28 Fwd Berth**





### 2016 C-28 Head





# CONTACTS

---

Andrey Shestakov, leading yacht broker of the sales department of Shestakov Yacht Sales Inc. Shestakov Yacht Sales Inc., the official representative of the Miami/Fort Lauderdale FL headquarters.

## Contact details

---

Email: **andrey@shestakovyachtsales.com**

Web: [shestakovyachtsales.com/en/](http://shestakovyachtsales.com/en/)

## Telephones

---

USA: **+1(954)274-4435**

## Office hours

---

Monday – Saturday: **9:00 - 21:00** EDT

Sunday: **closed**

## Address

---



Harbour Towne Marina, 850 NE 3rd St, STE 213, Dania, FL 33004