

## **BLUFIN — MAINSHIP**



**Builder:** MAINSHIP

**Year Built:** 2006

**Model:** trawler

**Price:** \$229,900 USD

**Location:** United States

**LOA:** 41' 4" (12.6mm)

**Beam:** 14.16

**Max Draft:** 3' 9" (1.12mm)

**Cruise Speed:** 9 Knots Kts. (10 MPH)

**Max Speed:** 18 Knots Kts. (21 MPH)

Our experienced yacht broker, Andrey Shestakov, will help you choose and buy a yacht that best suits your needs **Blufin — MAINSHIP** from **our catalogue**. Presently, at **Shestakov Yacht Sales Inc.**, we have a wide variety of yachts available on **our sale's list**. We also work in close contact with all the big **yacht manufacturers** from all over the world.

If you would like to buy a yacht **Blufin — MAINSHIP** or would like help answering any questions concerning purchasing, selling or chartering a yacht, please call **+1(954)274-4435**

# TABLE OF CONTENTS

---

TABLE OF CONTENTS	2
SPECIFICATIONS	5
Overview	5
Basic Information	5
Dimensions	5
Speed, Capacities and Weight	5
Accommodations	6
Hull and Deck Information	6
Engine Information	6
PHOTOS	7
2	7
3	7
4	7
5	7
6	7
7	7
8	8
9	8
10	8
11	8
12	8
13	8
14	9
15	9
16	9
17	9
18	9
19	9

---

20	10
21	10
22	10
23	10
24	10
25	10
26	11
27	11
28	11
29	11
30	11
31	11
32	12
33	12
34	12
35	12
36	12
37	12
38	13
39	13
40	13
41	13
42	13
43	13
44	14
45	14
46	14
47	14
CONTACTS	15

---

---

Contact details	15
Telephones	15
Office hours	15
Address	15

---

# SPECIFICATIONS

---

## Overview

---

**OUR TRADE!! Exceptionally Clean and Well Maintained, Ready for Travel!!**

**The *Mainship 400 Trawler* is the updated version of the very popular 350/390 Trawler that we all know and love! Big, wide walkways, molded Bridge Steps, Large Windows, and No Teak!**

**Powered by a single Yanmar 6LYA diesel rated at 370 HP and features a Bow and Stern Thruster, an Upper and Lower Helm and a list of additional features including a Freshly serviced Engine and Generator, NEW Bottom Paint, Fresh Buff and Wax, and an Excellent Bridge Enclosure!**

**Rated Above Average in a Survey Completed September 2024! Call today for more information!**

## Basic Information

---

**Category:** trawler

**Model Year:** 2006

**Year Built:** 2006

**Country:** United States

## Dimensions

---

**LOA:** 41' 4" (12.6mm)

**Beam:** 14.16

**Max Draft:** 3' 9" (1.12mm)

## Speed, Capacities and Weight

---

**Cruise Speed:** 9 Knots Kts. (10 MPH)

**Max Speed:** 18 Knots Kts. (21 MPH)

**Water Capacity:** 130 Gallons

**Holding Tank:** 47 Gal Gallons

**Fuel Capacity:** 300 Gal Gallons

---

## Accommodations

---

**Total Cabins:** 2

**Total Heads:** 1

---

## Hull and Deck Information

---

**Hull Material:** Fiberglass

---

## Engine Information

---

**Engines:** 1

**Manufacturer:** Yanmar

**Engine Type:** Inboard

**Fuel Type:** Diesel

# PHOTOS

2



3



4



5



6



7





8



9



10



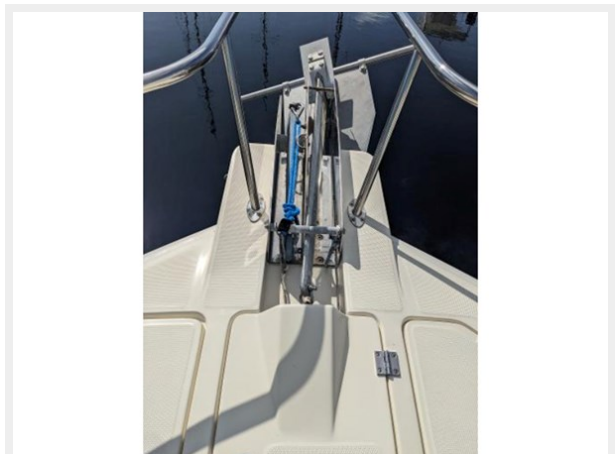
11



12



13

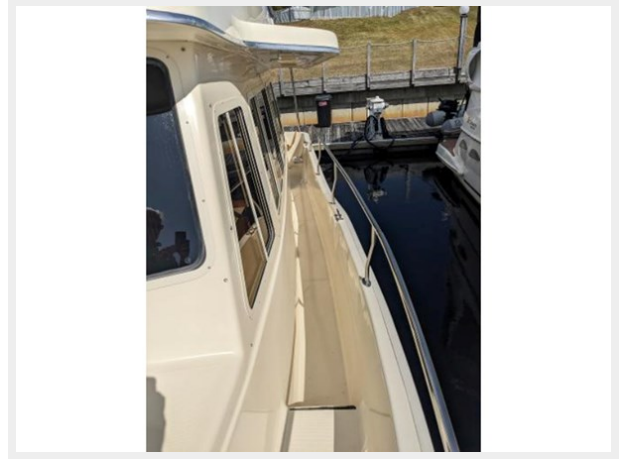




14



15



16



17



18



19



20



21



22



23



24



25





26



27



28



29



30



31



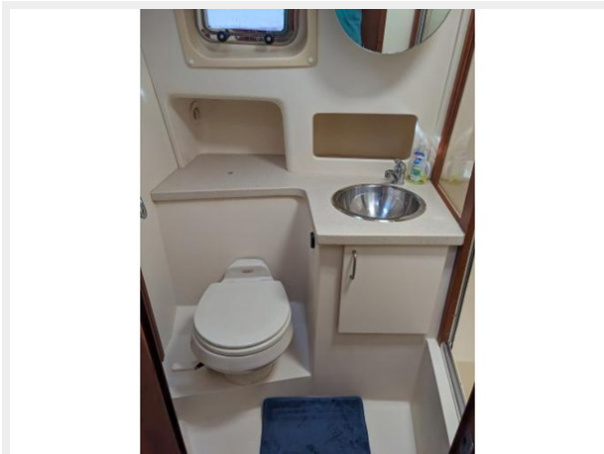
32



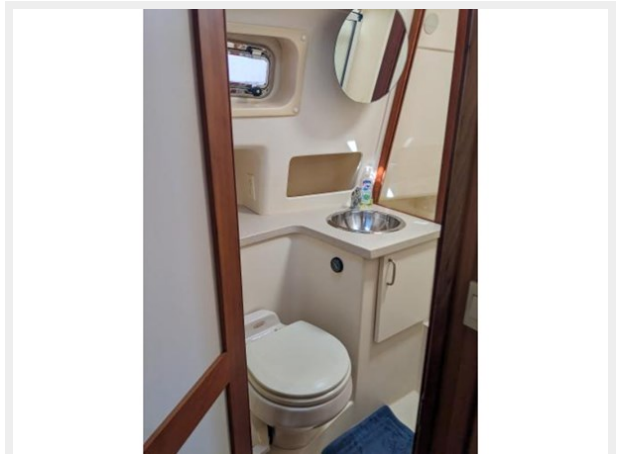
33



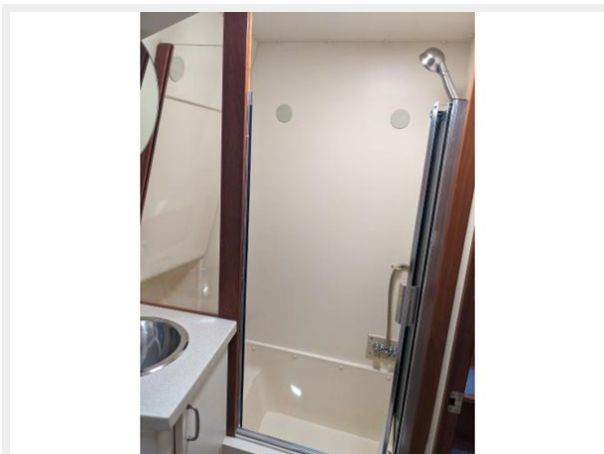
34



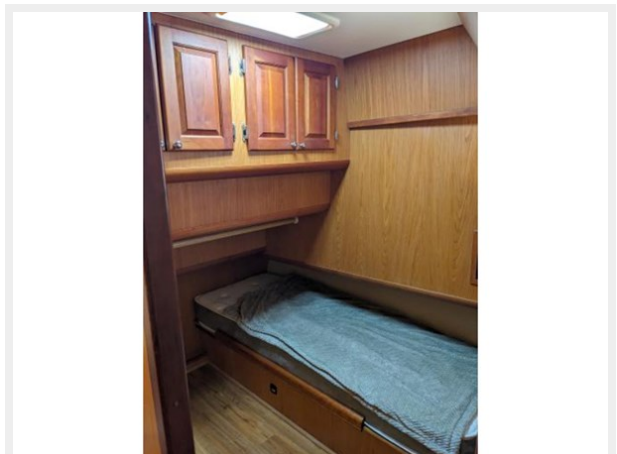
35



36



37

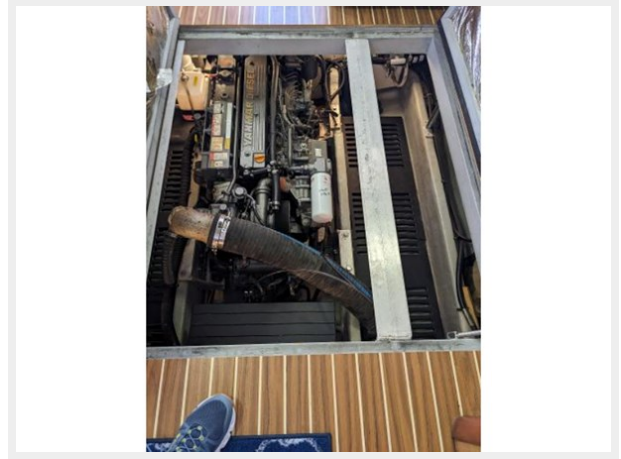




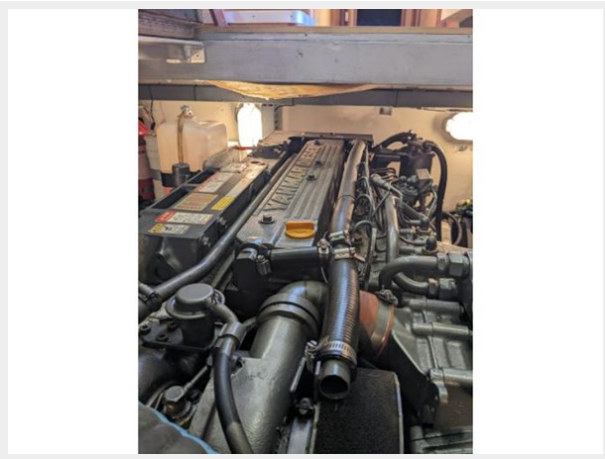
38



39



40



41



42



43





44



45



46



47



# CONTACTS

---

Andrey Shestakov, leading yacht broker of the sales department of Shestakov Yacht Sales Inc. Shestakov Yacht Sales Inc., the official representative of the Miami/Fort Lauderdale FL headquarters.

## Contact details

---

Email: **andrey@shestakovyachtsales.com**

Web: [shestakovyachtsales.com/en/](https://shestakovyachtsales.com/en/)

## Telephones

---

USA: **+1(954)274-4435**

## Office hours

---

Monday – Saturday: **9:00 - 21:00** EDT

Sunday: **closed**

## Address

---



Harbour Towne Marina, 850 NE 3rd St, STE 213, Dania, FL 33004