

## **SOL SHINE — FERRETTI YACHTS**



**Builder:** FERRETTI YACHTS

**Year Built:** 2014

**Model:** Flybridge

**Price:** \$4,799,999 USD

**Location:** United States

**LOA:** 96' (29.26mm)

**Beam:** 22.08

**Min Draft:** 7' 3" (2.21mm)

**Cruise Speed:** 21 Knots Kts. (24 MPH)

**Max Speed:** 28 Knots Kts. (32 MPH)

Our experienced yacht broker, Andrey Shestakov, will help you choose and buy a yacht that best suits your needs **SOL SHINE — FERRETTI YACHTS** from our catalogue. Presently, at **Shestakov Yacht Sales Inc.**, we have a wide variety of yachts available on our sale's list. We also work in close contact with all the big **yacht manufacturers** from all over the world.

If you would like to buy a yacht **SOL SHINE — FERRETTI YACHTS** or would like help answering any questions concerning purchasing, selling or chartering a yacht, please call **+1(954)274-4435**

---

# TABLE OF CONTENTS

---

TABLE OF CONTENTS	2
SPECIFICATIONS	3
Overview	3
Basic Information	3
Dimensions	3
Speed, Capacities and Weight	3
Accommodations	4
Hull and Deck Information	4
Engine Information	4
PHOTOS	5
CONTACTS	24
Contact details	24
Telephones	24
Office hours	24
Address	24

---

# SPECIFICATIONS

---

## Overview

---

**Come visit her at the Palm Harbor Marina during FLIBS 2024!**

Welcome aboard "Sol Shine" a stunning, meticulously maintained 2014 96' Ferretti raised pilot house.

She features five spacious staterooms with an on-deck master, all with ensuite heads, along with a day head in the salon. Accommodations for a total of five crew members in three cabins forward if you wish to charter, or easily operated and maintained by three crew. She has a top speed of 28 knots, equipped with gyro and fin stabilization, bow and stern thrusters, a large transom garage, and a davit on the sundeck.

She is US Spec'd, and the only one available in the US.

## Basic Information

---

**Category:** Flybridge

**Sub Category:** Flybridge

**Model Year:** 2014

**Year Built:** 2014

**Country:** United States

## Dimensions

---

**LOA:** 96' (29.26mm)

**Beam:** 22.08

**Min Draft:** 7' 3" (2.21mm)

## Speed, Capacities and Weight

---

**Cruise Speed:** 21 Knots Kts. (24 MPH) **Max Speed:** 28 Knots Kts. (32 MPH)

**Water Capacity:** 350 Gallons

**Fuel Capacity:** 2375 Gal Gallons

---

## Accommodations

---

**Total Cabins:** 5

**Total Heads:** 5

---

## Hull and Deck Information

---

**Hull Material:** Fiberglass

---

## Engine Information

---

**Engines:** 2

**Manufacturer:** MTU

**Engine Type:** Inboard

**Fuel Type:** Diesel

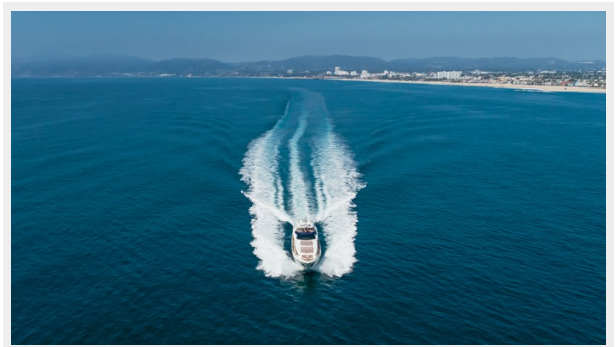
# PHOTOS







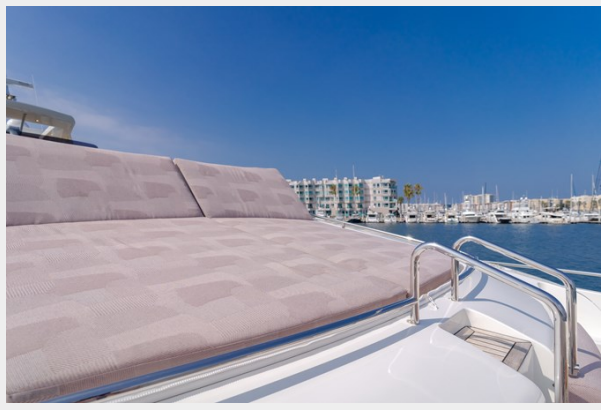
















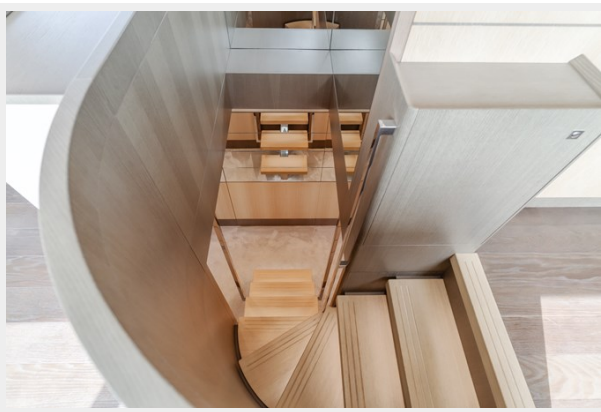




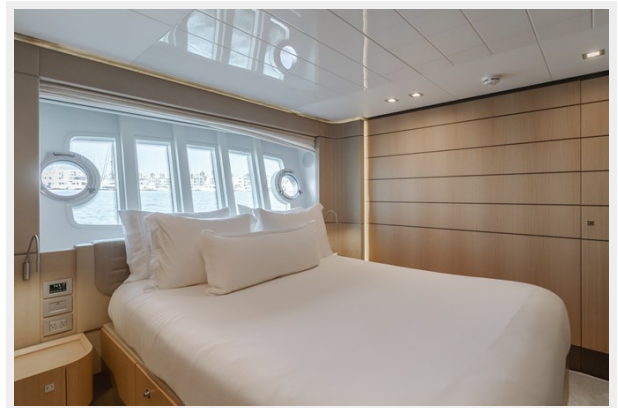


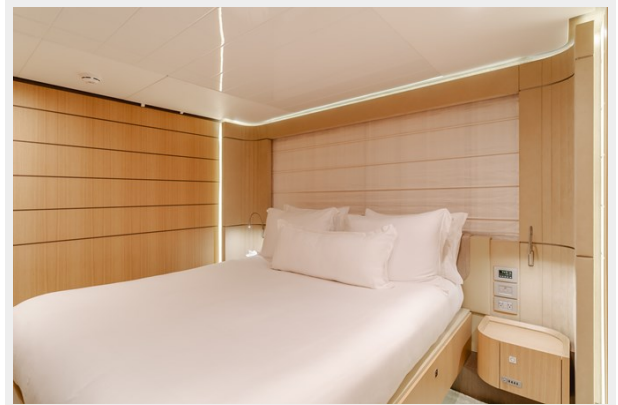


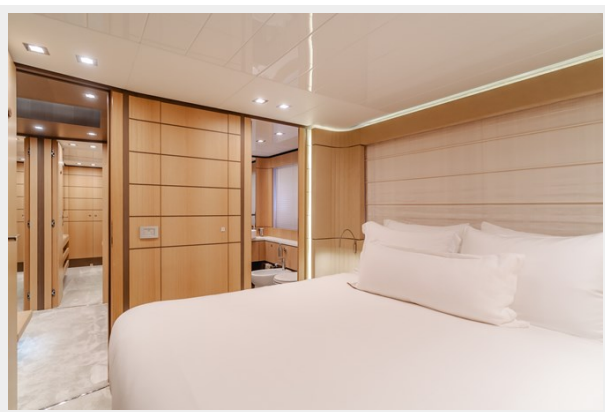
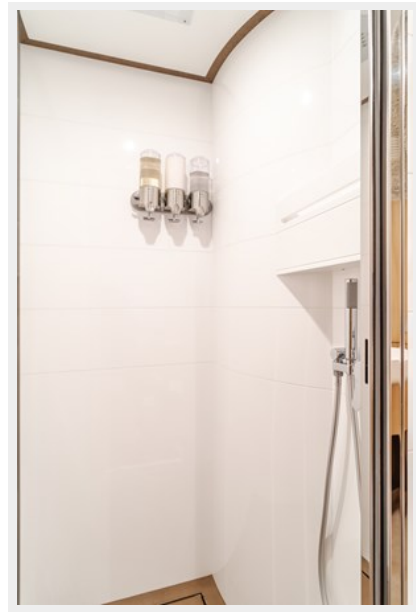




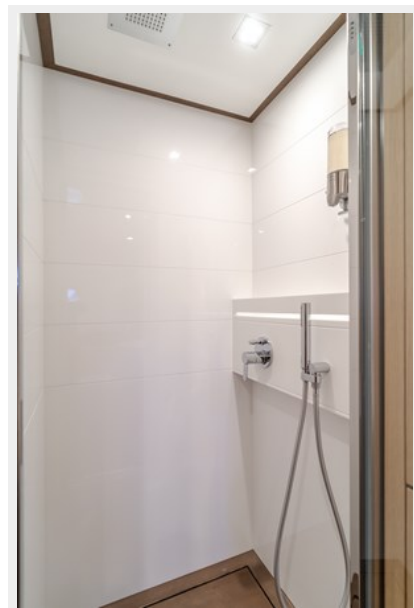


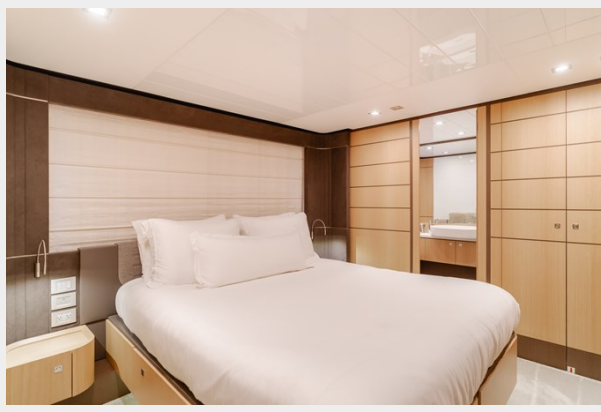








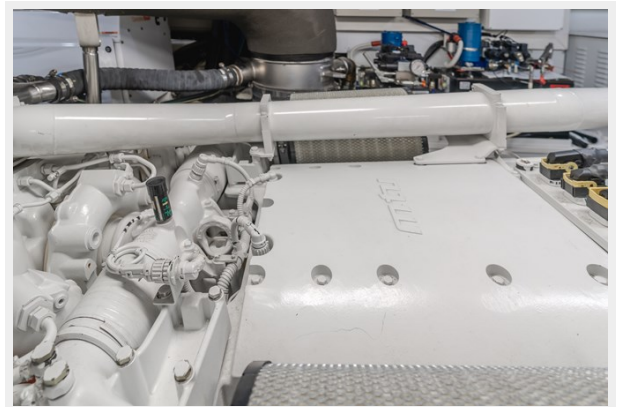
















# CONTACTS

---

Andrey Shestakov, leading yacht broker of the sales department of Shestakov Yacht Sales Inc. Shestakov Yacht Sales Inc., the official representative of the Miami/Fort Lauderdale FL headquarters.

## Contact details

---

Email: **andrey@shestakovyachtsales.com**

Web: [shestakovyachtsales.com/en/](https://shestakovyachtsales.com/en/)

## Telephones

---

USA: **+1(954)274-4435**

## Office hours

---

Monday – Saturday: **9:00 - 21:00** EDT

Sunday: **closed**

## Address

---



Harbour Towne Marina, 850 NE 3rd St, STE 213, Dania, FL 33004