

WEATHERLY — OYSTER



Builder: OYSTER

Year Built: 2007

Model: Cruising or Racing Sailboat

Price: \$1,200,000 USD

Location: United States

LOA: 65' (19.81mm)

Beam: 18.41

Max Draft: 8' (2.44mm)

Cruise Speed: 9 Knots Kts. (10 MPH)

Our experienced yacht broker, Andrey Shestakov, will help you choose and buy a yacht that best suits your needs **WEATHERLY — OYSTER** from **our catalogue**. Presently, at **Shestakov Yacht Sales Inc.**, we have a wide variety of yachts available on **our sale's list**. We also work in close contact with all the big **yacht manufacturers** from all over the world.

If you would like to buy a yacht **WEATHERLY — OYSTER** or would like help answering any questions concerning purchasing, selling or chartering a yacht, please call **+1(954)274-4435**

TABLE OF CONTENTS

TABLE OF CONTENTS	2
SPECIFICATIONS	5
Overview	5
Basic Information	5
Dimensions	5
Speed, Capacities and Weight	5
Accommodations	5
Hull and Deck Information	6
Engine Information	6
PHOTOS	7
Looking forward from helms	7
Huge refrigerated cockpit table	7
Cockpit port side	7
RIB in electric davits	7
New Garmin sailing displays	7
Port pedestal	7
Stbd pedestal	8
Navtec hydraulic panel	8
Electric davits	8
Looking forward	8
Transom steps	8
Stb side deck	8
Deck detail	9
V-Boom	9
Stb side electric halyard winch	9
Foredeck	9
Sail locker fwd	9
Headsails on Reckmann furlers	9

Looking aft	10
Port side electric halyard winch	10
Saloon	10
Saloon	10
Nav station, comms	10
AC and DC distribution panel	10
Nav with chart table	11
Galley facing aft	11
Galley, refrigerator and stove, freezer toploading	11
Galley facing forward	11
Hi/lo dining and coffee table	11
Port guest cabin	11
Guest, day head with shower stall	12
Stbd guest facing aft	12
Ensuite head stb cabin	12
Facing aft in saloon	12
Owner's cabin	12
Ensuite head	12
View from port side	13
Engine with service doors open	13
Pump and pit area	13
Deep bilge	13
Washer dryer	13
Watermaker control	13
CONTACTS	14
Contact details	14
Telephones	14
Office hours	14
Address	14

SPECIFICATIONS

Overview

WEATHERLY is tastefully appointed and is bright down below. She is very well maintained by her owner/ operator who is an ex-SuperYacht captain and boatyard manager. She represents a best-in-class opportunity amongst Oyster 655s and a great value in the market at large.

Basic Information

Category: Cruising or Racing Sailboat **Model Year:** 2007

Year Built: 2007

Country: United States

Dimensions

LOA: 65' (19.81mm)

LWL: 59' 6" (18.14mm)

Beam: 18.41

Max Draft: 8' (2.44mm)

Speed, Capacities and Weight

Cruise Speed: 9 Knots Kts. (10 MPH) **Gross Tonnage:** 36.9 Pounds

Water Capacity: 462 Gallons

Fuel Capacity: 528 Gal Gallons

Accommodations

Total Cabins: 4

Total Heads: 3

Hull and Deck Information

Hull Material: Fiberglass

Deck Material: Teak

Hull Configuration: Monohull

Hull Color: Aurora Gold Metallic

Hull Designer: Rob Humphreys

Interior Designer: Oyster Design

Engine Information

Engines: 1

Manufacturer: Perkins

Engine Type: Inboard

Fuel Type: Diesel

PHOTOS

Looking forward from helms



Huge refrigerated cockpit table



Cockpit port side



RIB in electric davits



New Garmin sailing displays



Port pedestal



Stbd pedestal



Navtec hydraulic panel



Electric davits



Looking forward



Transom steps



Stb side deck



Deck detail



V-Boom



Stb side electric halyard winch



Foredeck



Sail locker fwd



Headsails on Reckmann furlers



Looking aft



Port side electric halyard winch



Saloon



Saloon



Nav station, comms



AC and DC distribution panel



Nav with chart table



Galley facing aft



Galley facing forward



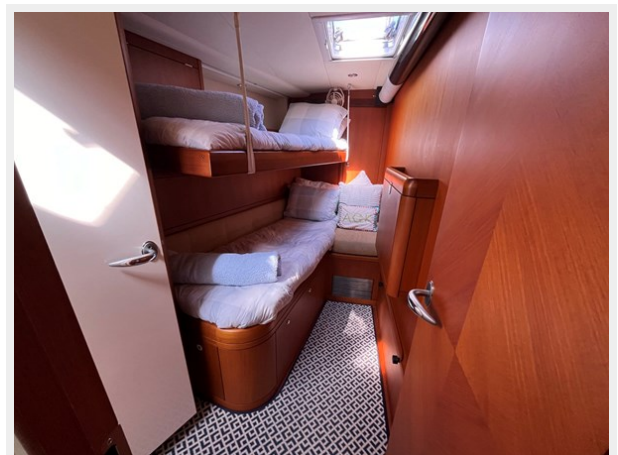
Galley, refrigerator and stove, freezer toploading



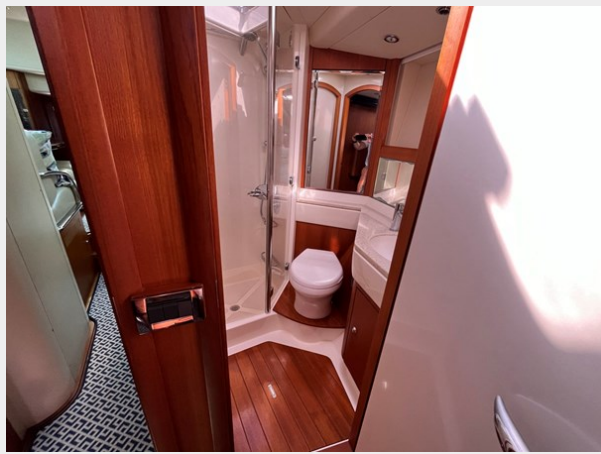
Hi/lo dining and coffee table



Port guest cabin



Guest, day head with shower stall



Stbd guest facing aft



Ensuite head stb cabin



Facing aft in saloon



Owner's cabin



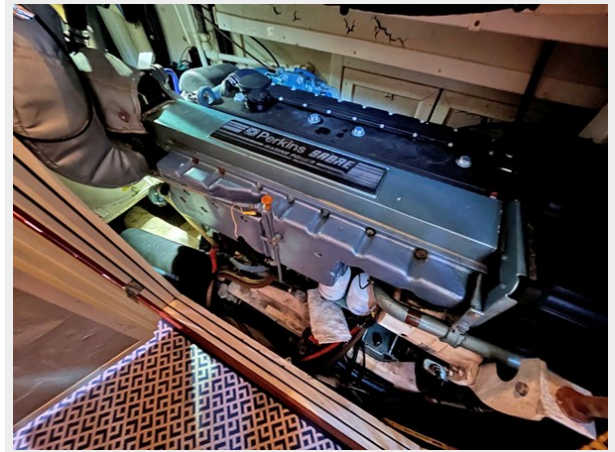
Ensuite head



View from port side



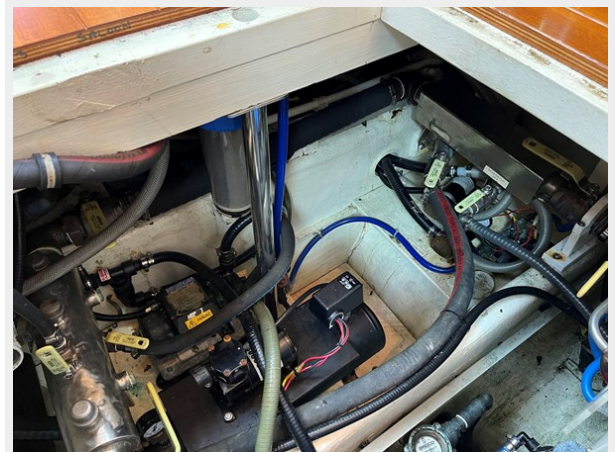
Engine with service doors open



Pump and pit area



Deep bilge



Washer dryer



Watermaker control



CONTACTS

Andrey Shestakov, leading yacht broker of the sales department of Shestakov Yacht Sales Inc. Shestakov Yacht Sales Inc., the official representative of the Miami/Fort Lauderdale FL headquarters.

Contact details

Email: **andrey@shestakovyachtsales.com**

Web: shestakovyachtsales.com/en/

Telephones

USA: **+1(954)274-4435**

Office hours

Monday – Saturday: **9:00 - 21:00** EDT

Sunday: **closed**

Address



Harbour Towne Marina, 850 NE 3rd St, STE 213, Dania, FL 33004