

MARITIMO S50 SEDAN MOTORYACHT — MARITIMO



Builder: MARITIMO

LOA: 57' 2" (17.4mm)

Year Built: 2015

Model: Motor Yacht

Price: \$1,290,000 AUD

Location: N/A

Our experienced yacht broker, Andrey Shestakov, will help you choose and buy a yacht that best suits your needs **Maritimo S50 Sedan Motoryacht — MARITIMO** from **our catalogue**. Presently, at **Shestakov Yacht Sales Inc.**, we have a wide variety of yachts available on **our sale's list**. We also work in close contact with all the big **yacht manufacturers** from all over the world.

If you would like to buy a yacht **Maritimo S50 Sedan Motoryacht — MARITIMO** or would like help answering any questions concerning purchasing, selling or chartering a yacht, please call **+1(954)274-4435**

TABLE OF CONTENTS

TABLE OF CONTENTS	2
SPECIFICATIONS	4
Overview	4
Basic Information	5
Dimensions	5
Speed, Capacities and Weight	5
Accommodations	6
Hull and Deck Information	6
Engine Information	6
PHOTOS	7
Maritimo S50 Sedan Motoryacht	7
Maritimo S50	7
BMS Maritimo	7
Maritimo BMS	7
BMS Sanctuary Cove	7
Maritimo S50 BMS	7
Maritimo S50 Sedan Motoryacht	7
Maritimo S50	7
BMS Maritimo	7
Maritimo BMS	7
Maritimo BMS	8
Maritimo S50 BMS	8
Maritimo S50 Sedan Motoryacht	8
Maritimo S50	8
BMS Maritimo	8
Maritimo BMS	8
Maritimo BMS	8
Maritimo S50 BMS	8

Maritimo S50 Sedan Motoryacht	8
Maritimo S50	8
BMS Maritimo	9
Maritimo BMS	9
Maritimo BMS	9
Maritimo S50 BMS	9
Maritimo S50 Sedan Motoryacht	9
Maritimo S50	9
BMS Maritimo	9
Maritimo BMS	9
Maritimo BMS	9
CONTACTS	10
Contact details	10
Telephones	10
Office hours	10
Address	10

SPECIFICATIONS

Overview

BMS Maritimo Sanctuary Cove offers for sale this well presented highly spec'd Maritimo S50 Sedan Motoryacht!

\\n\\n

The perfect boat for those looking for everything on a single level, with superior space, fuel efficiency and performance.

\\n\\n

Step aboard and you will notice the wide walk around decks, spacious saloon, and the galley aft design with full-size fridge and a well-appointed pantry, ideal for easy entertaining.

\\n\\n

Incorporating a full beam master suite with an abundance of storage in drawers, hanging lockers and underneath the master bed. The mezzanine level above the master has lockers, drawers, a full-length mirror and vanity, ensuring ultimate convenience for all occasions.

\\n\\n

Your guests are comfortably accommodated in a guest suite forward, bunks to starboard, and a day head easily accessed by both guest accommodations.

\\n\\n

The euro lounge fitted stern with seated lounge comes with rear access to the lazarette including freezer and BBQ plus hydraulic swim platform.

\\n\\n

This Maritimo S50 comes with the upgraded galley with Miele package including dishwasher, full height fridge freezer, convection oven, 4 burner stove as well as icemaker and bar fridge on the port side. The large saloon area includes a large L shape seating with opposite lounging set behind the well appointed helm allows for great entertaining and allows the skipper to interact well with guests.

\\n\\n

Step downstairs into the accommodation and you will find a full beam master with day bed area, vanity/dresser area and ensuite, moving forward into the bow with a large VIP cabin with hanging cupboards and a 2 way ensuite for day head use also. On the STBD side you will find a great third cabin with bunks and more storage space.

\\n\\n

Options such as washer/dryer, watermaker, Sat TV, Miele upgraded galley, Bose system throughout, teak laid Hydraulic platform suitable for a Brig tender or the linke, metallic painted hull (Aug 2018), karcher pressure cleaner plumbed, humprey trim tabs, ZIP tap in galley, set this boat apart.

\\n\\n

Powered by low hour twin D 11 670hp Volvo Penta shaft drive engines and equipped with both bow and stern thrusters, antifouled and serviced in Aug 2018.

\\n\\n

Recently fitted a yacht controller, Aut-pilot, fabric seats to saloon, new teak cockpit table and remote for Hydraulic swim platform.

\\n\\n

LENGTH	16.15M	53 FT
LENGTH INCL HYD. SWIM PLATFORM	17.41M	57 FT
BEAM	5.08 M	16'8" FT

\\n\\t\\t\\t	\\n\\t\\t\\t	\\n\\t\\t\\t
\\n\\t\\t\\t	\\n\\t\\t\\t	\\n\\t\\t\\t
DRAFT	1.225 M	4'0" FT
\\n\\t\\t\\t	\\n\\t\\t\\t	\\n\\t\\t\\t
\\n\\t\\t\\t	\\n\\t\\t\\t	\\n\\t\\t\\t
DRY WEIGHT	21,250 KG	46,850 LBS
\\n\\t\\t\\t	\\n\\t\\t\\t	\\n\\t\\t\\t
\\n\\t\\t\\t	\\n\\t\\t\\t	\\n\\t\\t\\t
FUEL CAPACITY	3,800 L	1,003 US GAL
\\n\\t\\t\\t	\\n\\t\\t\\t	\\n\\t\\t\\t
\\n\\t\\t\\t	\\n\\t\\t\\t	\\n\\t\\t\\t
WATER CAPACITY	800 L	211 US GAL
\\n\\t\\t\\t	\\n\\t\\t\\t	\\n\\t\\t\\t
\\n\\t\\t\\t	\\n\\t\\t\\t	\\n\\t\\t\\t
HOLDING TANK CAPACITY	300 L	79 US GAL
\\n\\t\\t\\t	\\n\\t\\t\\t	\\n\\t\\t\\t
\\n\\t\\t\\t	\\n\\t\\t\\t	\\n\\t\\t\\t
SLEEPING CABINS	3	
\\n\\t\\t\\t	\\n\\t\\t\\t	
\\n\\t\\t\\t	\\n\\t\\t\\t	
SLEEPING CAPACITY	6 STANDARD	
\\n\\t\\t\\t	\\n\\t\\t\\t	
\\n\\t\\t\\t	\\n\\t\\t\\t	
ENGINES (STANDARD)	2 X VOLVO D11 - 670 MHP	
\\n\\t\\t\\t	\\n\\t\\t\\t	
\\n\\t\\t\\t	\\n\\t\\t\\t	
\\n\\t\\t\\t	17.5 KW	
GENERATOR	\\n\\n\\n\\n\\t\\t\\t	
\\n\\t\\t\\t		
	\\n\\t\\t\\t	
\\n\\n\\n		

Note: Photos are a mix of actual boat and one other, all soft furnishings, crokery, cutlery and items used to dress the boat for the photos are not included in the sale.

\\n"

Basic Information

Category: Motor Yacht **Year Built:** 2015 **Country:** N/A

Dimensions

LOA: 57' 2" (17.4mm)

Speed, Capacities and Weight

Holding Tank: 79.25 Gal Gallons

Accommodations

Total Berths: 6

Hull and Deck Information

Hull Material: Fiberglass

Exterior Designer: Bill Barry-Cotter

Engine Information

Engines: 2

Manufacturer: VOLVO D11

Engine Type: Inboard/Shaftdrive

Fuel Type: Diesel

PHOTOS

Maritimo S50 Sedan Motoryacht



Maritimo S50



BMS Maritimo



Maritimo BMS



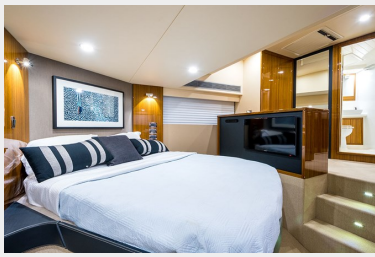
BMS Sanctuary Cove



Maritimo S50 BMS



Maritimo S50 Sedan Motoryacht



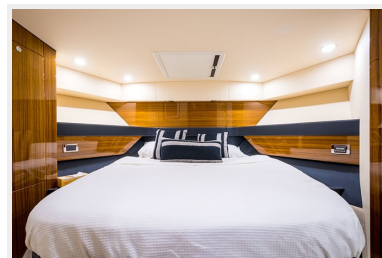
Maritimo S50



BMS Maritimo



Maritimo BMS



Maritimo BMS



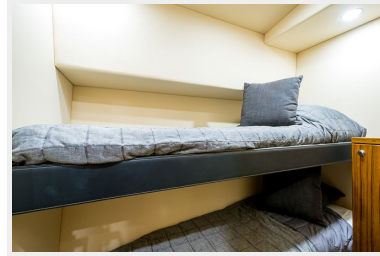
Maritimo S50 BMS



Maritimo S50 Sedan Motoryacht



Maritimo S50



BMS Maritimo



Maritimo BMS



Maritimo BMS



Maritimo S50 BMS



Maritimo S50 Sedan Motoryacht



Maritimo S50



BMS Maritimo



Maritimo BMS



Maritimo BMS



Maritimo S50 BMS



Maritimo S50 Sedan Motoryacht



Maritimo S50



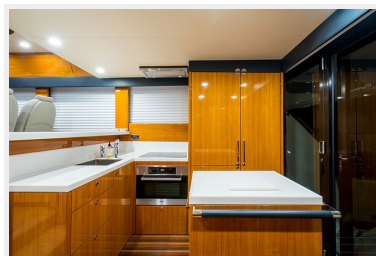
BMS Maritimo



Maritimo BMS



Maritimo BMS



CONTACTS

Andrey Shestakov, leading yacht broker of the sales department of Shestakov Yacht Sales Inc. Shestakov Yacht Sales Inc., the official representative of the Miami/Fort Lauderdale FL headquarters.

Contact details

Email:
andrey@shestakovyachtsales.com

Web: shestakovyachtsales.com/en/

Telephones

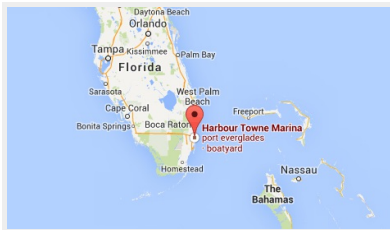
USA: +1(954)274-4435

Office hours

Monday – Saturday: **9:00 - 21:00** EDT

Sunday: **closed**

Address



Harbour Towne Marina, 850 NE 3rd
St, STE 213, Dania, FL 33004