

## CARIBBEAN 40 2011 — CARIBBEAN



**Builder:** CARIBBEAN

**Year Built:** 2011

**Model:** Motor Yacht

**Price:** \$829,000 AUD

**Location:** N/A

**LOA:** 40' (12.19mm)

**Beam:** 14.2

**Max Draft:** 4' (1.2mm)

Our experienced yacht broker, Andrey Shestakov, will help you choose and buy a yacht that best suits your needs **Caribbean 40 2011 — CARIBBEAN** from **our catalogue**. Presently, at **Shestakov Yacht Sales Inc.**, we have a wide variety of yachts available on **our sale's list**. We also work in close contact with all the big **yacht manufacturers** from all over the world.

If you would like to buy a yacht **Caribbean 40 2011 — CARIBBEAN** or would like help answering any questions concerning purchasing, selling or chartering a yacht, please call **+1(954)274-4435**

---

# TABLE OF CONTENTS

---

TABLE OF CONTENTS	2
SPECIFICATIONS	3
Overview	3
Basic Information	7
Dimensions	7
Speed, Capacities and Weight	7
Hull and Deck Information	7
Engine Information	8
PHOTOS	9
CONTACTS	13
Contact details	13
Telephones	13
Office hours	13
Address	13

---

# SPECIFICATIONS

---

## Overview

---

"

Available for immediate delivery is this fully rigged and heavily customized Caribbean 40 Mk 2 Sports fisherman.

\r\n\r\n

The current owner of this amazing vessel has an extensive history in the game fishing world, having built and owned multiple

\r\n\r\n

well known Custom Game Boats on the East Coast.

\r\n\r\n

This wealth of knowledge along with well known tradesman have spared no expense to transform this Caribbean 40 into a

\r\n\r\n

complete turn key package game and reef sport machine.

\r\n\r\n

Some of her features include:

\r\n\r\n

- Twin Cummins QSC 8.3L 500HP Electronic shaft drive. 1270Hrs Gives comfortable 25kt cruise and 32Kt WOT

\r\n\r\n

- Onan 9.5KVA Genset 1500RPM 2079 Hrs

\r\n\r\n

- Full Palm Beach Custom Teak Helm with Single level Glendinning controls and Edson Steering Wheel.

\r\n\r\n

- Portable binnacle Glendinning controls mounted to drop in Cockpit rod holder for

short handed fishing.

\r\n\r\n

- Triple 8412 Garmin, Radar, Plotter, Fishfinder with GSD 26 Chirp Professional Sonar Module and 2 KW transducer in custom professionally built wetbox.

\r\n\r\n

- ZIPWAKE trim tabs

\r\n\r\n

- Reel Colors pancake teaser reels to flybridge hardtop rigged to rigger eyes.

\r\n\r\n

- Custom Stainless rocket launchers to aft flybridge.

\r\n\r\n

- New Clears and custom perspex to flybridge.

\r\n\r\n

- 2 pac black painted lower brow

\r\n\r\n

- Recently new teak coverboards

\r\n\r\n

- New teak decks

\r\n\r\n

- 130LB relax fighting chair

\r\n\r\n

- Lees heavy tackle rod holders to cover boards. 0, 15 and 30 degree plus 3 x 15 degree in the transom and clearing rod holders.

\r\n\r\n

- Relax maxi outriggers plus shotgun centre rigger.

\r\n\r\n

---

- 2 x stainless tag pole holders to cabin sides

\r\n\r\n

- Built in pressure cleaner

\r\n\r\n

- Engine driven clutch deck wash pump

\r\n\r\n

- Custom Cockpit lockers

\r\n\r\n

- Custom made teak saloon entrance french doors

\r\n\r\n

- Underwater lights

\r\n\r\n

- Foredeck LED flood light

\r\n\r\n

- Cockpit LED flood lights

\r\n\r\n

- Hot cold Cockpit shower

\r\n\r\n

- Dubro rod hangers to saloon

\r\n\r\n

- Eutectic Cockpit Chest freezer

\r\n\r\n

- Eutectic galley stainless fridge and freezer

\r\n\r\n

- Engel bar fridge to saloon and flybridge

\r\n\r\n

- Raritan Ice maker to saloon

\r\n\r\n

- 4 burner Fisher and Paykel Cooktop

\r\n\r\n

- Sharp Convection Microwave

\r\n\r\n

- 43' Smart TV

\r\n\r\n

- Fusion sound system throughout

\r\n\r\n

- GPOs with USBs to saloon and galley

\r\n\r\n

- Aircon throughout.

\r\n\r\n

- 25KG stainless steel Rocna Anchor and Stainless steel anchor chain

\r\n\r\n

- 2 Cabin layout, Double forward, twin bunkroom and saloon lounge lifts to double bunk.

\r\n\r\n

\r\n\r\n

\r\n\r\n

\r\n\r\n

\r\n\r\n

\r\n\r\n

\r\n\r\n

\r\n\r\n

\r\n"

## Basic Information

---

**Category:** Motor Yacht

**Year Built:** 2011

**Country:** N/A

## Dimensions

---

**LOA:** 40' (12.19mm)

**Beam:** 14.2

**Max Draft:** 4' (1.2mm)

## Speed, Capacities and Weight

---

**Holding Tank:** 26.42 Gal Gallons

## Hull and Deck Information

---

**Hull Material:** GRP

**Deck Material:** GRP

**Hull Color:** White

---

## Engine Information

---

**Engines:** 2

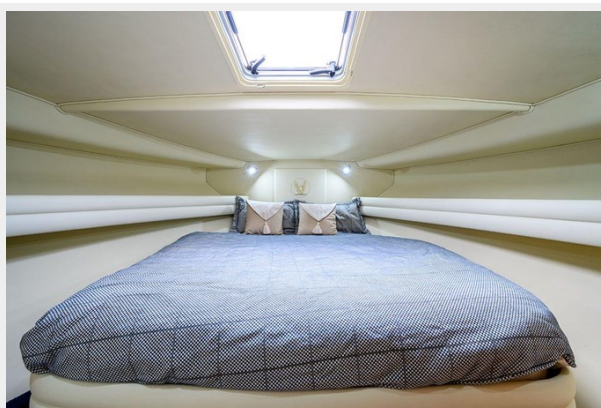
**Manufacturer:** Cummins

**Engine Type:** Inboard/Shaftdrive

**Fuel Type:** Diesel



# PHOTOS











# CONTACTS

---

Andrey Shestakov, leading yacht broker of the sales department of Shestakov Yacht Sales Inc. Shestakov Yacht Sales Inc., the official representative of the Miami/Fort Lauderdale FL headquarters.

## Contact details

---

Email: **andrey@shestakovyachtsales.com**

Web: [shestakovyachtsales.com/en/](http://shestakovyachtsales.com/en/)

## Telephones

---

USA: **+1(954)274-4435**

## Office hours

---

Monday – Saturday: **9:00 - 21:00** EDT

Sunday: **closed**

## Address

---



Harbour Towne Marina, 850 NE 3rd St, STE 213, Dania, FL 33004