

MAZU 52 — MAZU YACHTS



Builder: [MAZU YACHTS](#)

Year Built: 2025

Model: Motor Boat

Price: €1,450,000 EUR

Location: Turkey

LOA: 52' (15.85m)

Beam: 15.09

Min Draft: 3' (0.9m)

Cruise Speed: 29 Knots Kts. (33 MPH)

Max Speed: 37 Knots Kts. (43 MPH)

Our experienced yacht broker, Andrey Shestakov, will help you choose and buy a yacht that best suits your needs **Mazu 52 — MAZU YACHTS** from **our catalogue**. Presently, at **Shestakov Yacht Sales Inc.**, we have a wide variety of yachts available on **our sale's list**. We also work in close contact with all the big **yacht manufacturers** from all over the world.

If you would like to buy a yacht **Mazu 52 — MAZU YACHTS** or would like help answering any questions concerning purchasing, selling or chartering a yacht, please call **+1(954)274-4435**

TABLE OF CONTENTS

TABLE OF CONTENTS	2
SPECIFICATIONS	3
Overview	3
Basic Information	3
Dimensions	3
Speed, Capacities and Weight	3
Accommodations	4
Hull and Deck Information	4
Engine Information	4
PHOTOS	5
CONTACTS	7
Contact details	7
Telephones	7
Office hours	7
Address	7

SPECIFICATIONS

Overview

Mazu Yachts 52 is a Superyacht Chase Boat with generous interior volume and deck spaces to accommodate crowded guests on board. The 16 metre vessel can also equally operate individually as a personal yacht like all the other Mazu Yachts models. Built with carbon hull and sandwich molded core, the Mazu 52 model offers impressive performance on water. The interior design is done in house by Mazu Yachts and the exterior design is done by Halit Yukay. The naval architect is Profjord. The interior layout offers a comfortable saloon and accommodation onboard is for 4-6 guests in 2-3 cabins. Powered by 2x 800 Volvo Penta IPS, the boat cruises comfortably at 29 knots, reaching a maximum speed of 36 knots. The range is 380 nautical miles. The fuel capacity onboard is 1,900L and the water capacity is 600 L.

Basic Information

Category: Motor Boat

Model Year: 2025

Year Built: 2025

Country: Turkey

Dimensions

LOA: 52' (15.85mm)

Beam: 15.09

Min Draft: 3' (0.9mm)

Speed, Capacities and Weight

Cruise Speed: 29 Knots Kts. (33 MPH) **Cruise Speed Range:** 380

Max Speed: 37 Knots Kts. (43 MPH) **Water Capacity:** 600 Gallons

Fuel Capacity: 501.93 Gal Gallons

Accommodations

Total Cabins: 2

Hull and Deck Information

Hull Material: Carbon Fiber

Exterior Designer: Halit Yukay

Interior Designer: Mazu Yachts

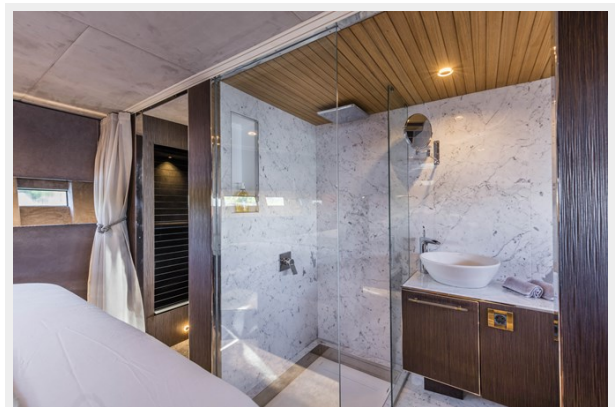
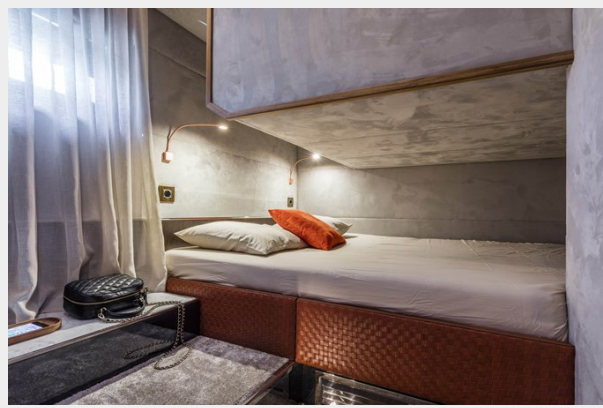
Engine Information

Engines: 2

Manufacturer: Volvo Penta

Fuel Type: Diesel

PHOTOS





CONTACTS

Andrey Shestakov, leading yacht broker of the sales department of Shestakov Yacht Sales Inc. Shestakov Yacht Sales Inc., the official representative of the Miami/Fort Lauderdale FL headquarters.

Contact details

Email: **andrey@shestakovyachtsales.com**

Web: shestakovyachtsales.com/en/

Telephones

USA: **+1(954)274-4435**

Office hours

Monday – Saturday: **9:00 - 21:00** EDT

Sunday: **closed**

Address



Harbour Towne Marina, 850 NE 3rd St, STE 213, Dania, FL 33004