

EMMA (ORIGINALLY MARTHA P V) — TRUMPY



Судостроитель: TRUMPY

Год постройки: 1962

Модель: Моторная яхта

Цена: ЦЕНА ЯХТЫ ПО ЗАПРОСУ

Местонахождение: United States

Длина общая: 57' 0" (17.37m)

Ширина: 14' 9" (4.50m)

Мин. осадка: 4' 6" (1.37m)

Крейс. скорость: 14 Kts. (16 MPH)

Купить **EMMA (originally MARTHA P V) — TRUMPY** а также выбрать подходящую вам яхту из нашего каталога яхт вам поможет опытный яхтенный брокер Андрей Шестаков. На сегодняшний день компания **Shestakov Yacht Sales Inc.** имеет большое количество яхт в собственном списке продаж, а также тесно сотрудничает со всеми крупными яхтенными производителями по всему миру. Для того чтобы купить яхту **EMMA (originally MARTHA P V) — TRUMPY** а также проконсультироваться по любому вопросу связанному с покупкой, продажей, чартером яхт позвоните по телефону **+7(918)465-66-44**.

ОГЛАВЛЕНИЕ

ОГЛАВЛЕНИЕ	2
ХАРАКТЕРИСТИКИ	4
Основная информация	4
Размеры	4
Скорость, вместимость и масса	4
Размещение	4
Корпус и палуба	4
Информация о двигателе	5
ПОДРОБНОЕ ОПИСАНИЕ	6
VESSEL WALKTHROUGH:	6
Navigational Equipment	6
Hardtop Equipment	6
Deck Equipment	6
Galley	7
Electrical System	7
Safety And Fire Equipment	7
Remarks	7
Исключения	7
Отказ от ответственности	8
ФОТОГРАФИИ	9
Main Salon Looking Forward	9
Main Salon Aft/Port	9
Owner's Stateroom Head	9
Master Stateroom Double Door Wardrobe	9
Guest Head	10
Crew Quarters in Forecastle	10
Crew Head/Stall Shower	10
Aft Deck Wet Bar	10

Mast	11
Foredeck Equipment	11
Tiderise	11
Main Salon	11
Main Salon - 1	11
Owners Stateroom	11
Owner's Stateroom - 2	12
Galley	12
Galley	12
Galley - 3	12
Galley - 3	12
Wheel House	12
Aft Deck - 1	13
Aft Deck Seating	13
Aft Deck Seating - 2	13
Wet Bar	13
Engine Room	13
КОНТАКТЫ	14
Контактная информация	14
Телефоны	14
Время работы	14
Адрес	14

ХАРАКТЕРИСТИКИ

Основная информация

Тип судна: Моторная яхта

Подкатегория: Flushdeck

Модельный год: 1962

Год постройки: 1962

Страна: United States

Размеры

Длина общая: 57' 0" (17.37m)

Ширина: 14' 9" (4.50m)

Мин. осадка: 4' 6" (1.37m)

Скорость, вместимость и масса

Крейс. скорость: 14 Kts. (16 MPH)

Объем топливного бака: 450 Gallons

Размещение

Всего кают: 2

Всего коек: 4

Спальные места: 4

Всего ком. состава: 2

Каюты экипажа: 1

Койки экипажа: 2

Спальных мест экипажа: 2

Комм. состав экипажа: 1

Корпус и палуба

Материал корпуса: Mahogany

Материал палубы: Teak

Комплектация корпуса: Modified V-Hull

Информация о двигателе

Двигатели: 2

Производитель: General Motors

Модель: 8V71N

Тип двигателя: Inboard

Тип топлива: Diesel

ПОДРОБНОЕ ОПИСАНИЕ

VESSEL WALKTHROUGH:

Accommodations are for four in the owner's party in two separate staterooms with private baths, plus two crew in the forecabin. Starting aft on main deck, which can be fully enclosed, there is adequate seating for eight, with a wet bar located in the forward section behind the helm seat. Midship steering controls and navigation devices are in the forward section of the aft deck.

Going below on the portside, you enter the main salon which has upholstered sofa, chairs, ottoman, RCA DVD/CD player, Pioneer VSX-454 A/V receiver. There is ample storage in the main salon. Moving aft to port down a companion way, the owner's stateroom is full width in the aft section of the vessel, with port and starboard outboard lower berths with a large vanity between. Owner's head and stall shower to starboard. The guest stateroom, with twin fore and aft lower berths and full length hanging locker with adequate storage is also on the starboard side. Opposite to port is a guest head and large stall shower which also serves as a day head.

Up to the main salon and forward, you access the galley, midships of the main salon, which is also below deck. Galley to port has beautiful leaded glass dish storage, upholstered dinette to starboard, stainless steel sink and large undercounter refrigerator with freezer up, Sharp Carousel microwave, and three-burner electric stove with oven and broiler. AC/DC panel and air conditioning controls are located in galley also. Forecabin is forward with upper and lower berths to starboard, forward of which is a storage locker, the crew shower and forecabin head all the way forward. Opposite to starboard is hanging locker with shelves, followed aft by a large linen closet and finally a large stall shower.

Navigational Equipment

Garmin GPS Map 225, 12-channel Raytheon R21X Raster Scan Radar, open array Datamarine Dart 2490 multi-depth, speed, log, sea temperature Furuno LC-90 MKII Loran Robertson AP2000DL APTank tender Signet Analog knot log and odometer Standard Horizon VHF Intrepid & Standard Automatic Hailer/2nd Standard VHF(2) twin lever Panish controls Danforth Constellation compass Intercom Meters: Twin RPM, engine oil pressure, transmission oil, amp, water temperature Holding tank level monitor 2 x 12V Cigarette type plugs Guest engine syncs, LED display Trim tab control Bose 151 Outlaw box speakers on aft deck

Hardtop Equipment

Stainless steel spotlight GPS Antenna VHF Antenna(s) Dual horns Open array radar 12V TV Antenna Loran Antenna Davit arm for dinghy Varnished mast Speaker for hailer

Deck Equipment

Foredeck (2) donnage boxes Hatch for crew quarters Ideal windlass with pressure switch (up only) (2) Danforth style Anchors painted white Very large seat ahead of salon windows with storage below Shore power midship, port and starboard Waste check pump out **Aft Deck** U-line icemaker Sink Refrigerator Varnished table (2) wicker style chairs Large aft deck seat Off white cushions fore, aft helm bench, foredeck seating Large bench at helm Weather cloths on stanchions

Galley

Forward and down from Salon Good ventilation with open design 1 15V electric (3) burner with oven/burners Microwave, coffee maker & refrigerator Freezer, stainless steel sink & dinette

Electrical System

Electrical panel located at galley dinette (2) 12VDC, (2) 8D 12VDC, bank of golf cart 32VDC Pro-Mariner battery charger 32V-25A, Guest 12V-10A 50-Amp shore power

Safety And Fire Equipment

Auto Fire Systems - CO2 fixed automatic in engine room Fire Extinguishers - (2) Size I, (2) Size II ABC dry chemical Life Raft - No. 8 ft fiberglass Packard dinghy stowed on boat deck Life Jackets - (2) Type I, (8) Type II USCG approved located in aft cabin & pilothouse

Remarks

EMMA has undergone a total rehabilitation in 2004 and 2005 at Moores' Marine in Riviera Beach. This includes structural modifications, updating of plumbing, wiring in all electrical systems, hull and brightwork have been stripped and totally refinished, windows re-bedded, teak decks refastened where necessary, new or updated air conditioning systems, aides to navigation and safety equipment.

Emma is currently on the hard and has been there for the past two years. She is seriously looking for a new owner to bring her back to her classic condition. The current shipyard would be delighted to work with the next owner on any refit and or repair work.

Исключения

При продаже яхты исключаются личные вещи владельца.

Отказ от ответственности

Компания предоставляет описание судна или яхты добросовестно, но не может гарантировать точность этой информации, а также не ручается за техническое состояние. Покупатель должен проинструктировать своих агентов или оценщиков исследовать представленную информацию более подробно, по собственному желанию. Продажа судна или яхты, изменение цены или снятие с продажи будет происходить без предварительного уведомления.

ФОТОГРАФИИ

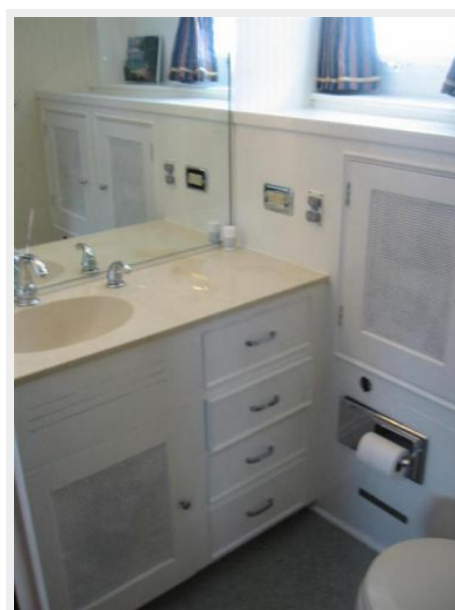
Main Salon Looking Forward



Main Salon Aft/Port



Owner's Stateroom Head



Master Stateroom Double Door Wardrobe



Guest Head



Crew Quarters in Forecastle



Crew Head/Stall Shower



Aft Deck Wet Bar



Mast



Foredeck Equipment



Tiderise



Main Salon



Main Salon - 1



Owners Stateroom



Owner's Stateroom - 2



Galley



Galley



Galley - 3



Galley - 3



Wheel House



Aft Deck - 1



Aft Deck Seating



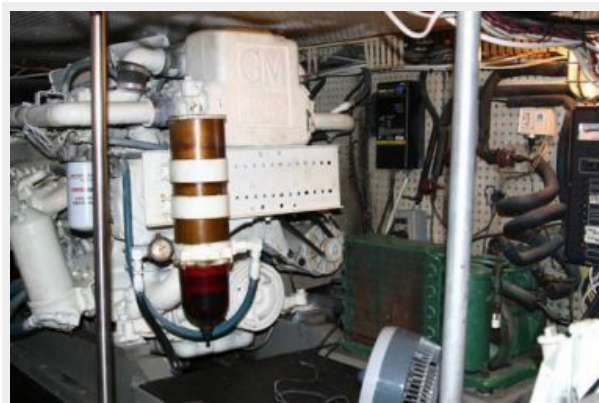
Aft Deck Seating - 2



Wet Bar



Engine Room



КОНТАКТЫ

Андрей Шестаков (Andrey Shestakov) – ведущий яхтенный брокер отдела продаж яхт и судов компании Shestakov Yacht Sales Inc. Официальный представитель Shestakov Yacht Sales Inc. для русскоговорящих клиентов в центральном офисе компании в Майами/Форт Лодердейл/Флорида/США.

Контактная информация

Email: andrey@shestakovyachtsales.com

Web: shestakovyachtsales.com

Телефоны

Краснодарский край: **+7(918)465-66-44**

США, Майами, Флорида: **+1(954)274-4435**

Время работы

Понедельник – Суббота: **9:00 - 21:00**
EDT

Воскресенье: **Закрито**

Адрес



Harbour Towne Marina, 850 NE 3rd St,
STE 213, Dania, FL 33004