

JMC 60 — BERTRAM



Builder: BERTRAM

Year Built: 1989

Model: Sport Fisherman

Price: PRICE ON APPLICATION

Location: United States

LOA: 60' 0" (18.29m)

Beam: 16' 11" (5.16m)

Min Draft: 5' 6" (1.68m)

Cruise Speed: 26 Kts. (30 MPH)

Max Speed: 30 Kts. (35 MPH)

Our experienced yacht broker, Andrey Shestakov, will help you choose and buy a yacht that best suits your needs **JMC 60 — BERTRAM** from our catalogue. Presently, at Shestakov Yacht Sales Inc., we have a wide variety of yachts available on our sale's list. We also work in close contact with all the big yacht manufacturers from all over the world.

If you would like to buy a yacht **JMC 60 — BERTRAM** or would like help answering any questions concerning purchasing, selling or chartering a yacht, please call **+1(954)274-4435**

TABLE OF CONTENTS

| | |
|------------------------------|----|
| TABLE OF CONTENTS | 2 |
| SPECIFICATIONS | 4 |
| Basic Information | 4 |
| Dimensions | 4 |
| Speed, Capacities and Weight | 4 |
| Accommodations | 4 |
| Hull and Deck Information | 5 |
| Engine Information | 5 |
| DETAILED INFORMATION | 6 |
| Vessel Walkthrough | 6 |
| Salon | 6 |
| Galley | 6 |
| Guest Stateroom | 6 |
| Master Stateroom | 7 |
| VIP Stateroom | 7 |
| Cockpit | 7 |
| Fly Bridge | 7 |
| Electronics | 7 |
| Engine Room | 8 |
| Features | 8 |
| Remarks | 8 |
| Exclusions | 8 |
| Disclaimer | 8 |
| PHOTOS | 10 |
| GUEST HEAD | 11 |
| GUEST HEAD | 11 |
| MASTER HEAD | 11 |
| Bait Freezer | 12 |

| | |
|------------------|----|
| Bait Prep Center | 12 |
| Helm Station | 12 |
| Helm Station | 12 |
| Bridge Seating | 13 |
| Port Engine | 13 |
| Stbd Engine | 13 |
| OutRiggers | 13 |
| Generator | 13 |
| Tackle Center | 14 |
| Live Well | 14 |
| VIP Head | 14 |
| CONTACTS | 15 |
| Contact details | 15 |
| Telephones | 15 |
| Office hours | 15 |
| Address | 15 |

SPECIFICATIONS

Basic Information

Category: Sport Fisherman

Sub Category: Convertible

Model Year: 1990

Year Built: 1989

Country: United States

Registration #: 976256

Fly Bridge: Yes

Dimensions

LOA: 60' 0" (18.29m)

LWL: 60' 0" (18.29m)

LOD: 60' 0" (18.29m)

Beam: 16' 11" (5.16m)

Min Draft: 5' 6" (1.68m)

MFG Length: 60' 0" (18.29m)

Speed, Capacities and Weight

Cruise Speed: 26 Kts. (30 MPH)

Max Speed: 30 Kts. (35 MPH)

Displacement: 93500 Pounds

Water Capacity: 250 Gallons

Fuel Capacity: 1630 Gallons

Accommodations

Total Cabins: 3

Total Berths: 3

Sleeps: 6

Total Heads: 3

Crew Berths: 1

Crew Sleeps: 1

Crew Heads: 1

Hull and Deck Information

Hull Material: Fiberglass

Hull Configuration: Modified V-Hull

Engine Information

Engines: 2

Manufacturer: Detroit Diesel

Model: 16V92

Engine Type: Inboard

Fuel Type: Diesel

DETAILED INFORMATION

Vessel Walkthrough

You enter the vessel from the cockpit into the main salon. The salon is comfortable and inviting. A half counter joins the salon and galley. Together they provide an atmosphere conducive to the cruiser or fisherman. Continuing Fwd, 3 steps lead down to the accommodations. The first door to Stbd is hallway access to a full head. This head also is accessed through a private door which leads to the starboard guest stateroom. This Stbd guest stateroom has over under bunks. Across the hall to port is the Master stateroom. This stateroom features a private head, entertainment center and huge bed. Continuing Fwd, you will find a stacked washer/dryer to Stbd. Finally, all the way Fwd there is a third Stateroom. This VIP Suite has an island Queen Berth and private head.

Salon

The spacious Salon features an L-Shaped Sofa to port, handsome oversized coffee table, and two comfortable swivel chairs. The wood is a factory "Pickled" Maple throughout. Satellite TV and Bose surround sound help to create a comfortable cruising environment. Neatly concealed in the salon ceiling is overhead storage for fishing rods.

Galley

The galley provides you with all the amenities you have at home, features include:

- Full size refrigerator/freezer
- Full size Dishwasher
- Trash compactor
- Microwave/convection oven
- 4 burner cook top
- Dual sinks
- Pantry and ample storage
- Wood floor
- Solid surface countertops

Guest Stateroom

The Guest Stateroom to port has nice wide over/under bunk beds. In-room access to a shared/day head, aromatic cedar lined closet and plenty of storage help to make this room suitable for anyone.

Master Stateroom

Master Stateroom, is located to port, she boast a tapered King size bed, aromatic cedar lined hanging closet and an Ensuite head.

- SAT TV, DVD, VHS
- Individual climate controls
- Ample storage

VIP Stateroom

The VIP Stateroom is located forward. She features an Island Queen berth, large aromatic cedar lined closet and a private head. Storage abounds and privacy is yours.

Cockpit

The cockpit is set up as a cruising vessel, but could be easily converted to a big game fishing machine. She features a deep "never used" bait freezer, bait prep center, and tackle storage. She also has a large circular live well and a transom door w/gate. She has a handsome teak cockpit sole under which houses the Lazarette, spare props and a huge macerated fish box. Brand new cockpit combing and rope lighting finish off the spacious alfresco dining area or fishing nerve center. Finally a half cockpit sunshade offers some shelter from the hot sun. Classic big game fighting chair added 4/1/07 and brand new custom pipe welders outriggers.

Fly Bridge

The flybridge is truly massive, boasting 2 padded helm chairs and fwd seating for at least 6, and a collapsible cocktail table. Visibility from the helm is excellent. The electronics are laid out well and have been updated. She has a custom weather resistant chart table to Stbd for the navigator.

Electronics

- Northstar 961XD
- Northstar 951X
- Furuno Radar
- Raytheon Speed/Depth
- Simrad Autopilot
- ICOM VHF/Standard VHF
- SEA SSB Radio

- **ACR Spotlight**
- **Bennett Trim Tabs**
- **Ritchie Compass**
- **Ensign Digital Tachs/Synch**

Engine Room

- **Twin Detroit Diesel 16V92 1400hp**
- **700 hrs SMOH**
- **Twin 15kw Onan Generators (2030 hrs/2011 hrs)**
- **Dual Racor fuel filtration**
- **Speedair Air Compressor**
- **Cruiseair AC**
- **Engine room fire suppression system**
- **Mech engine room gauges**
- **Oil Changing system**

Features

- **Powder coated Half Tower w/hard top**
- **Full Isinglass enclosure**
- **1/3 Cockpit Sunshade**
- **6 person Switlik life raft**

Remarks

She has been used strictly as a light cruising vessel her whole life. Classic chair and custom riggers just added in April of 07. This is only vessel's 2nd owner! It was maintained w/open check book by same Captain for 13 years!

Exclusions

Owner's personal belongings.

Disclaimer

The Company offers the details of this vessel or yacht in good faith but cannot guarantee or warrant the accuracy of this information nor warrant the condition of the vessel. A buyer should instruct his representatives, agents, or his surveyors, to investigate such details as the buyer desires validated. This vessel or yacht is offered subject to prior sale, price change, or withdrawal

without notice.

PHOTOS



GUEST HEAD



GUEST HEAD



MASTER HEAD

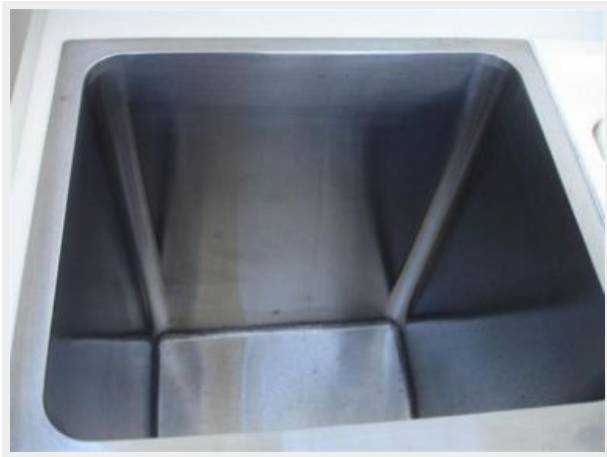




Bait Freezer



Bait Prep Center



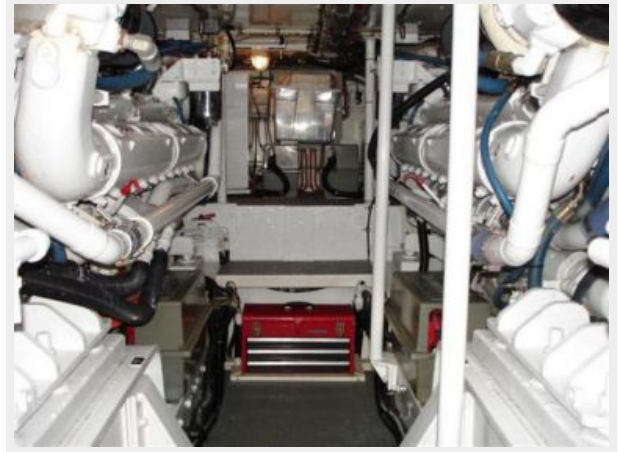
Helm Station



Helm Station



Bridge Seating



Port Engine



Stbd Engine



OutRiggers

Generator



Tackle Center



Live Well



VIP Head



CONTACTS

Andrey Shestakov, leading yacht broker of the sales department of Shestakov Yacht Sales Inc. Shestakov Yacht Sales Inc., the official representative of the Miami/Fort Lauderdale FL headquarters.

Contact details

Email: andrey@shestakovyachtsales.com

Web: shestakovyachtsales.com/en/

Telephones

USA: +1(954)274-4435

Office hours

Monday – Saturday: **9:00 - 21:00** EDT

Sunday: **closed**

Address



Harbour Towne Marina, 850 NE 3rd St,
STE 213, Dania, FL 33004